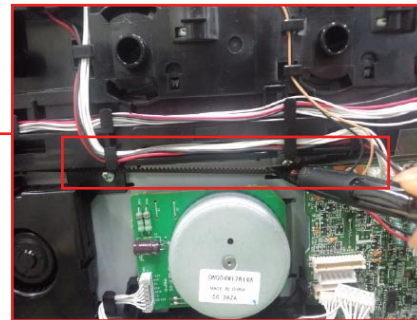
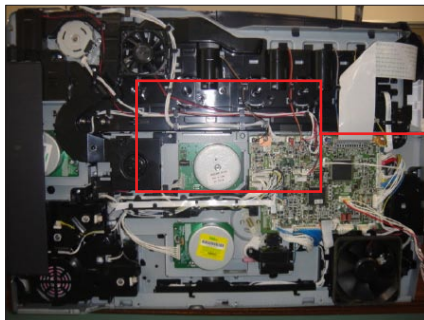


SB Number:	SB 2MH-002	Creation Date: 02/02/2012
Subject:	Parts change information	
Model:	FS-1030MFP/1130MFP/1035MFP/1135MFP, FS-C2026MFP/2126MFP/2026MFP+/2126MFP+/2526MFP/2626MFP	

Contents of changes

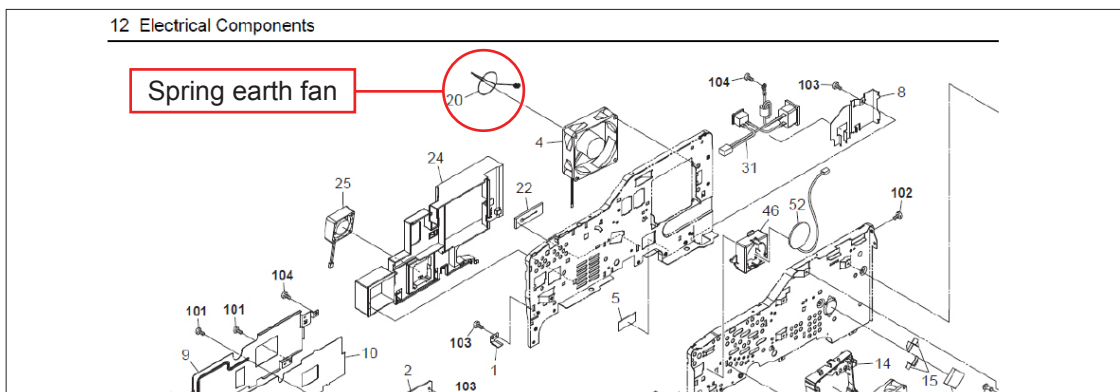
The **Belt S2M Z371** has been registered as a separate service part.



Parts

No.	Old Parts No.	New Parts No.	Description	Q'TY		Interchangeability		Applicable model(s)
				Old	New	Old	New	
1	-----	302KV02A90 2KV02A90	BELT S2M Z371	-	1	-	O	FS-C2026MFP/2126MFP/ 2026MFP+/2126MFP/ 2526MFP/2626MFP

The **Spring earth fan** is unnecessary. Therefore this part has been discontinued.



Parts

No.	Old Parts No.	New Parts No.	Description	Q'TY		Interchangeability		Applicable model(s)
				Old	New	Old	New	
1	302HS02620 2HS02620	-----	SPRING EARTH FAN	1	-	O	-	FS-1030MFP/1130MFP/ 1035MFP/1135MFP