

ARDF DF3090
(D779-17)
Parts Catalog

Parts change information sample

 **Add**

 **Update**

 **Delete**

Unit All



U001
EXTERIOR



U002
ORIGINAL FEED



U003
ORIGINAL TRANSFER



U004
MAIN DRIVE



U005
ELECTRICAL



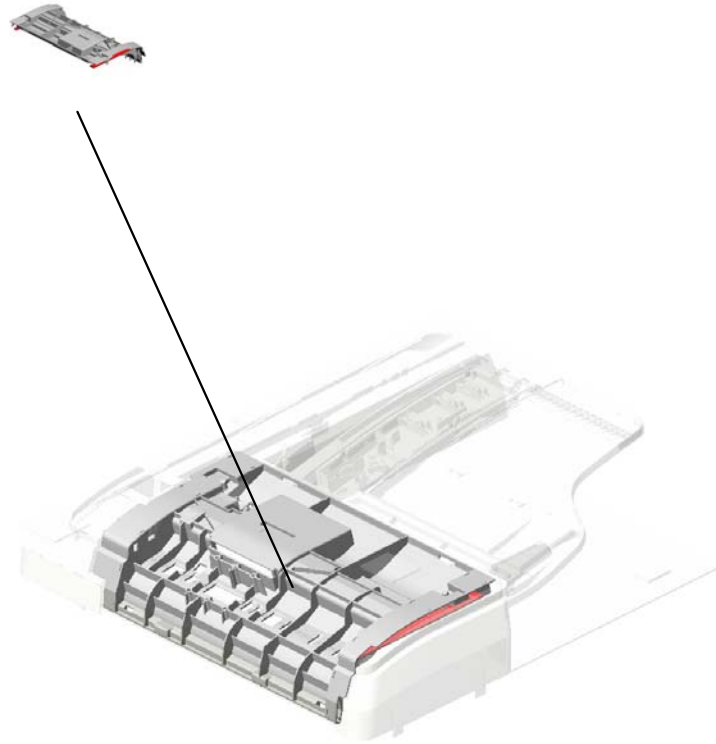
U006
ARDF



U007
MAIN FRAME

U001.EXTERIOR

U001_S001
D7794610
COVER:PAPER FEED:ASS'Y



U001	U002	U003	U004	U005	U006	U007
------	------	------	------	------	------	------

U001 EXTERIOR



- 4.52152621 SNAP RING - M6
- 17.B7896514 (x2) DAMPING INSULATION - COVER
- 13.B7893718 (x2) GATE PAWL CUSHION - SMALL
- 11.B3872316 (x2) CUSHION:STOPPER PAWL
- 8.AG070513 MAGNET CATCH

17.B7896514 (x4) DAMPING INSULATION - COVER 201504-02

15.B7894874 POSITIONING PLATE - REAR

1.04503008N (x7) TAPPING SCREW - M3X8

19.D3664849 CUSHION - PICK-UP ARM 201502-05

16.B7896511 (x2) CUSHION - REAR SMALL

12.B7893331 (x2) COMPRESSION SPRING - DRIVEN ROLLER

3.07200040E (x2) RETAINING RING - M4

7.AA143788 (x2) PIN:GUIDE PLATE: PAPER FEED

6.A8584671 (x4) ROLLER DRIVEN

2.04513006N (x2) TAPPING SCREW - 3X6

9.D7794760 (x3) REFLECTION PHOTO SENSOR:ORIGINAL TABLE:ASSY 201501-01 O/O

10.AW020198 PHOTOINTERRUPTOR:LG2A14NL1

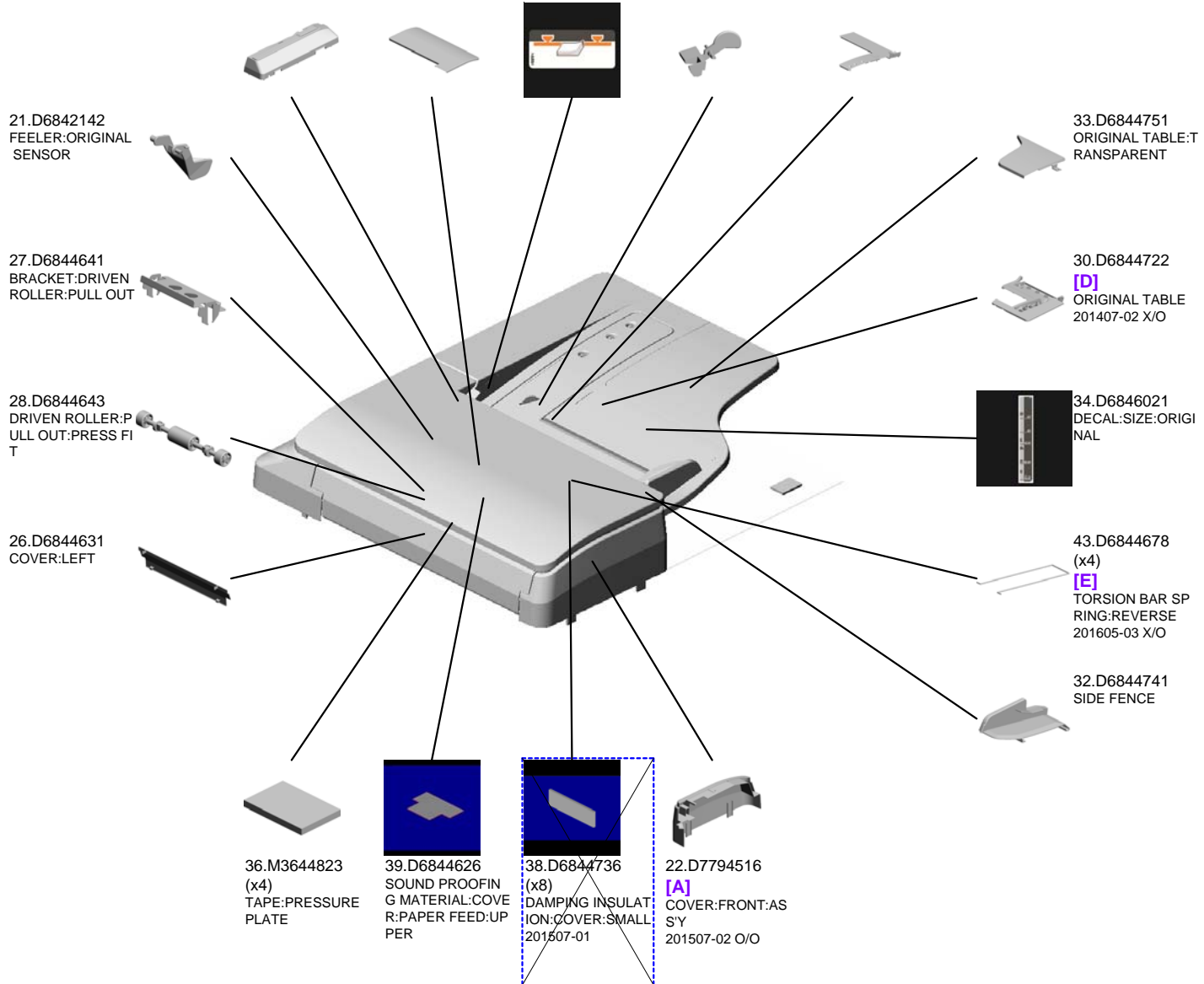
5.A3764599 SIDE FENCE PAD






18.B8024611 PRESSURE PLATE

14.B7894873 POSITIONING PLATE - FRONT

U001 EXTERIOR

- 23.D7794526
[B]
COVER:REAR:ASSY
201507-03 O/O
- 25.D6844621
COVER:PAPER FEED:UPPER
- 35.D6846041
DECAL:SIDE FENCE
- 20.D5784631
FEELER:ORIGINAL SENSOR:TRAILING EDGE
- 31.D6844732
COVER:ORIGINAL TABLE



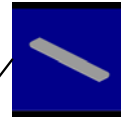
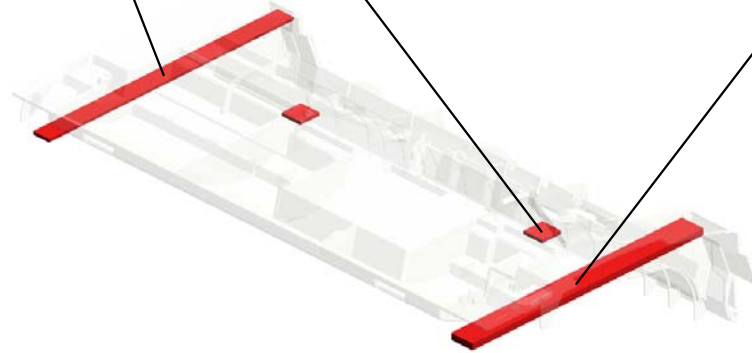
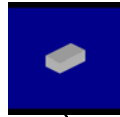
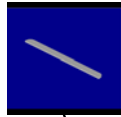
 AW010150 [C] PHOTO REFLECTION SENSOR:ORIGINAL TRAY 201501-01 O/O	 D6844511 [A] COVER:FRONT 201507-02 O/O
 D6844521 [B] COVER:REAR 201507-03 O/O	 D6844677 [E] TORSION BAR SPRING:REVERSE 201605-03 X/O
 D6844721 [D] ORIGINAL TABLE 201407-02 X/O	

- U001
- U002
- U003
- U004
- U005
- U006
- U007

U001_S001
COVER:PAPER FEED:ASS'Y

40.D7794616
SOUND PROOFING MATERIAL:COVER:PAPER FEED:FRONT
201510-03

42.D7794618
(x2)
CUSHION:PAPER FEED UNIT
201510-05



41.D7794617
SOUND PROOFING MATERIAL:COVER:PAPER FEED:INNER BACK
201510-04



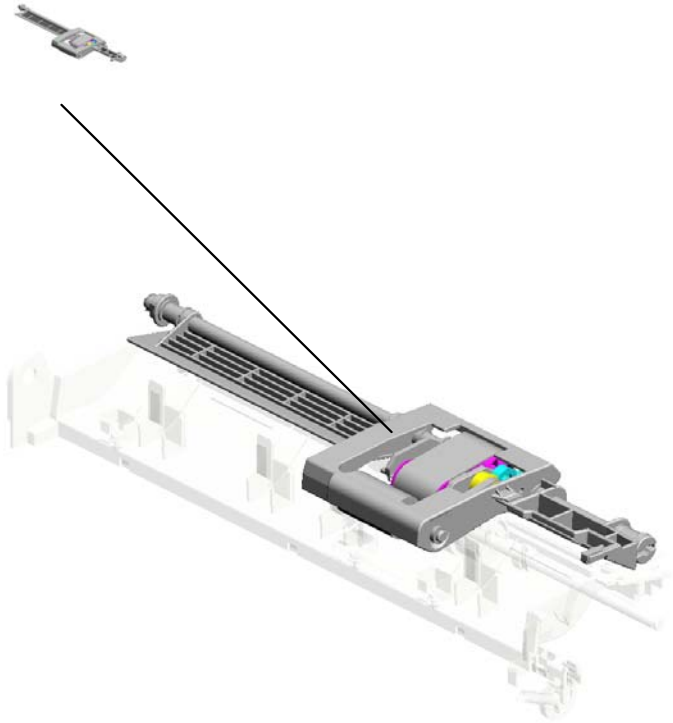
37.D7794610
[A]
COVER:PAPER FEED:ASS'Y
201510-02 X/O



D6844612
[A]
COVER:PAPER FEED
201510-02 X/O

U002.ORIGINAL FEED

U002_S001
D6842100
PAPER FEED UNIT:ASS'Y



U001	U002	U003	U004	U005	U006	U007
------	------	------	------	------	------	------

U002 ORIGINAL FEED

40.D6842312
COVER:REVERSE

48.D6842313
SHEET:SEPARATI
ON SUB-UNIT
201506-01

41.D6842322
GUIDE PLATE:REV
ERSE

6.54472681
SNAP RING

30.D5412241
REVERSE ROLLER
:PAPER FEED



44.D6842412
(x4)
PAD:STOPPER:ORI
GINAL

39.D6842311
GUIDE PLATE:PAP
ER FEED

49.D6842314
PAD:SEPARATION
SUB-UNIT
201506-02

43.D6842413
STOPPER:ORIGIN
AL
201605-02 X/O

26.B7892371
PICKUP GUIDE

1.04513006N
(x3)
TAPPING SCREW -
3X6

28.B7892436
TENSION SPRING -
STOPPER

5.08050089
RETAINING RING -
M4

45.D6843137
GEAR:CAM:STOPP
ER:ORIGINAL

27.B7892431
ORIGINAL STOPPE
R HOOK

38.D6842261
TORQUE LIMITER
MECHANICAL CLU
TCH:SEPARATOR:
ORVA

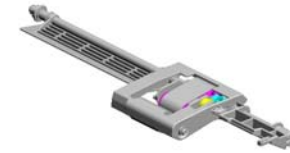
42.D6842331
(x4)
GUIDE:PULL OUT

37.D6842216
STOPPER:SHAFT:
RF

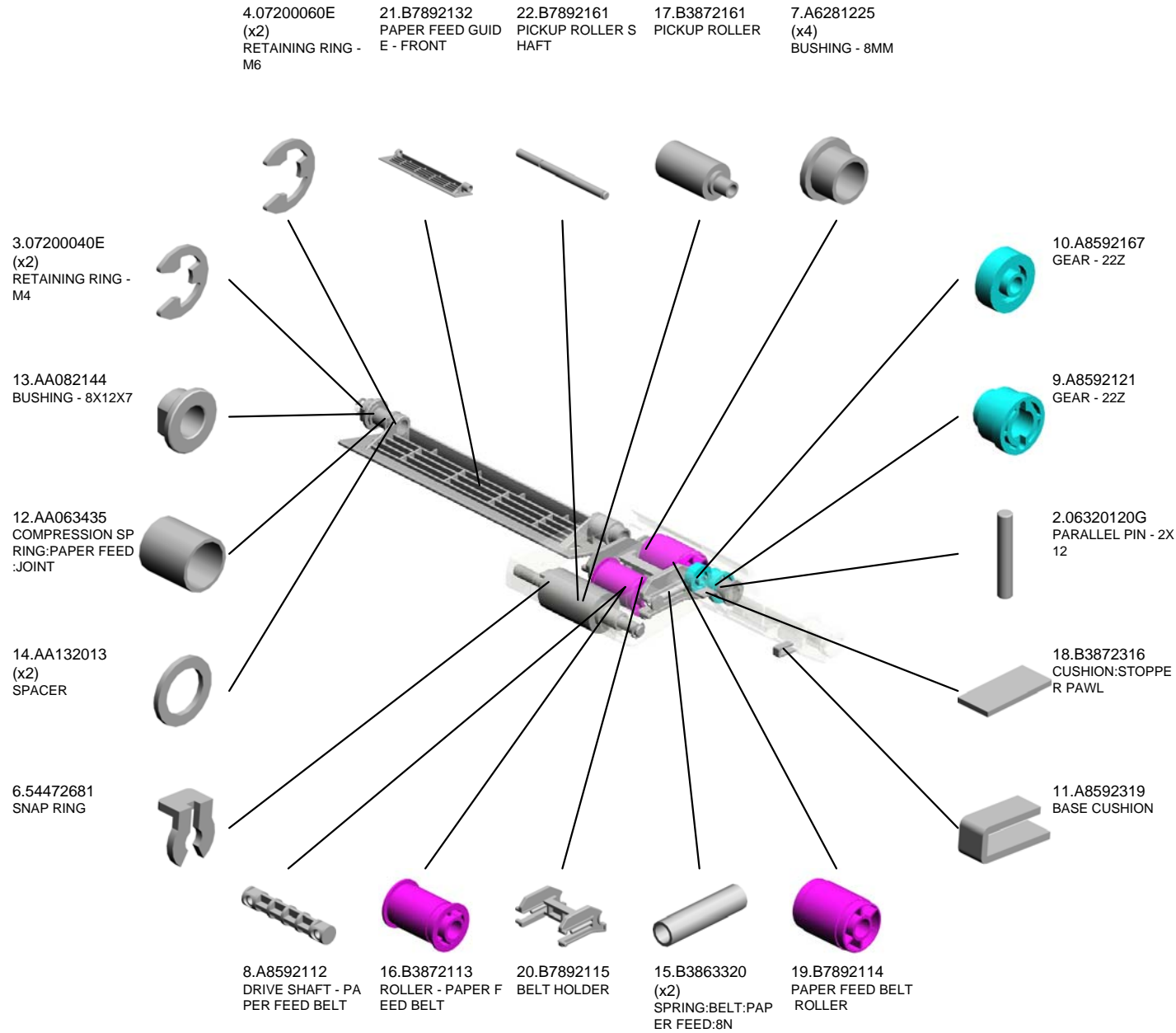
46.D6844491
(x2)
DAMPING INSULAT
ION:GUIDE PLATE

36.D6842210
SHAFT:REVERSE

U002_S001 PAPER FEED UNIT:ASS'Y



31.D6842100
PAPER FEED UNIT
:ASS'Y



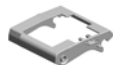
U002_S001
 PAPER FEED UNIT:ASS'Y

25.B7892181 TORSION SPRING - PICKUP
 32.D6842111 SHAFT:PAPER FEE D:DRIVE
29.D6842171 PAPER FEED BELT
 201409-01 X/O



31.D6842100 PAPER FEED UNIT :ASS'Y

34.D6842151 HOLDER:PICKUP



23.B7892163 COLLAR:PICKUP



47.G4123831 PULLEY - 22Z



35.D6842163 SYNCHRONOUS B ELT:40S2M122



33.D6842134 ARM:PICKUP

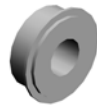


24.B7892164 TIMING PULLEY:PI CKUP:S2M



U003.ORIGINAL TRANSFER

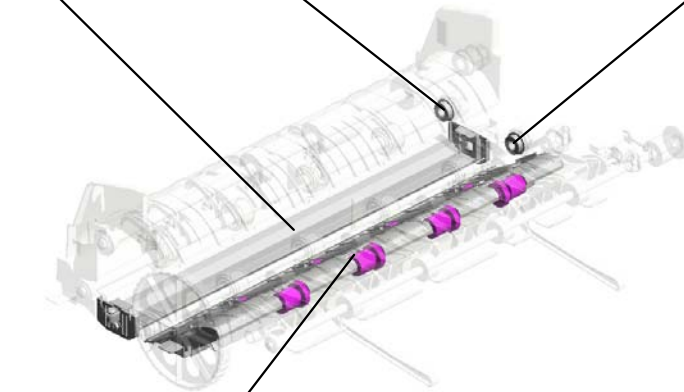
U003_S001
D6843111
TRANSPORT ROLLER:ENTR
ANCE



U003_S002
D6843121
TRANSPORT ROLLER:EXIT



U003_S004
D7793531
GUIDE PLATE:SCANNING:AS
S'Y



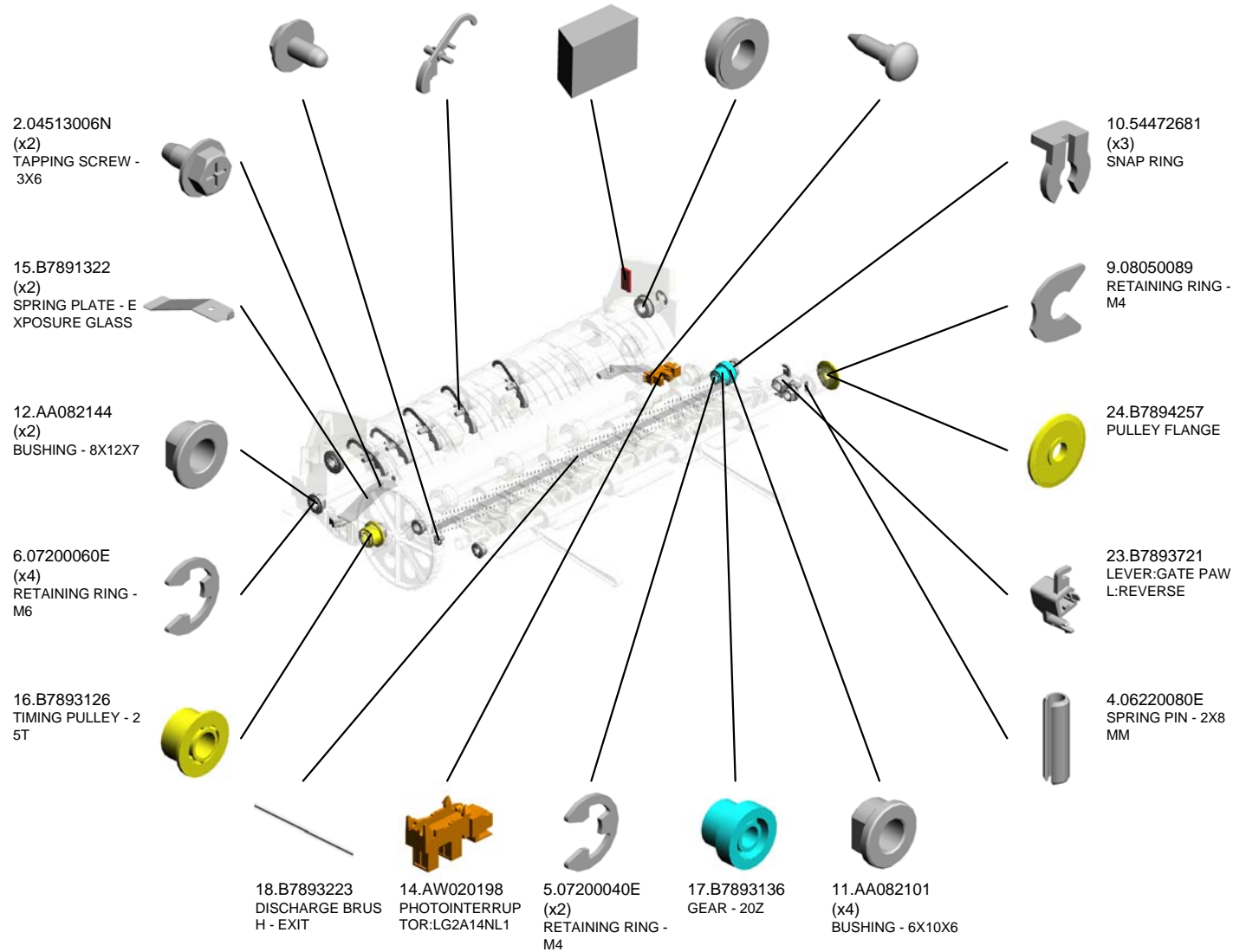
U003_S003
D6843400
GUIDE PLATE:EXIT:LOWER:
ASS'Y

U001	U002	U003	U004	U005	U006	U007
------	------	------	------	------	------	------

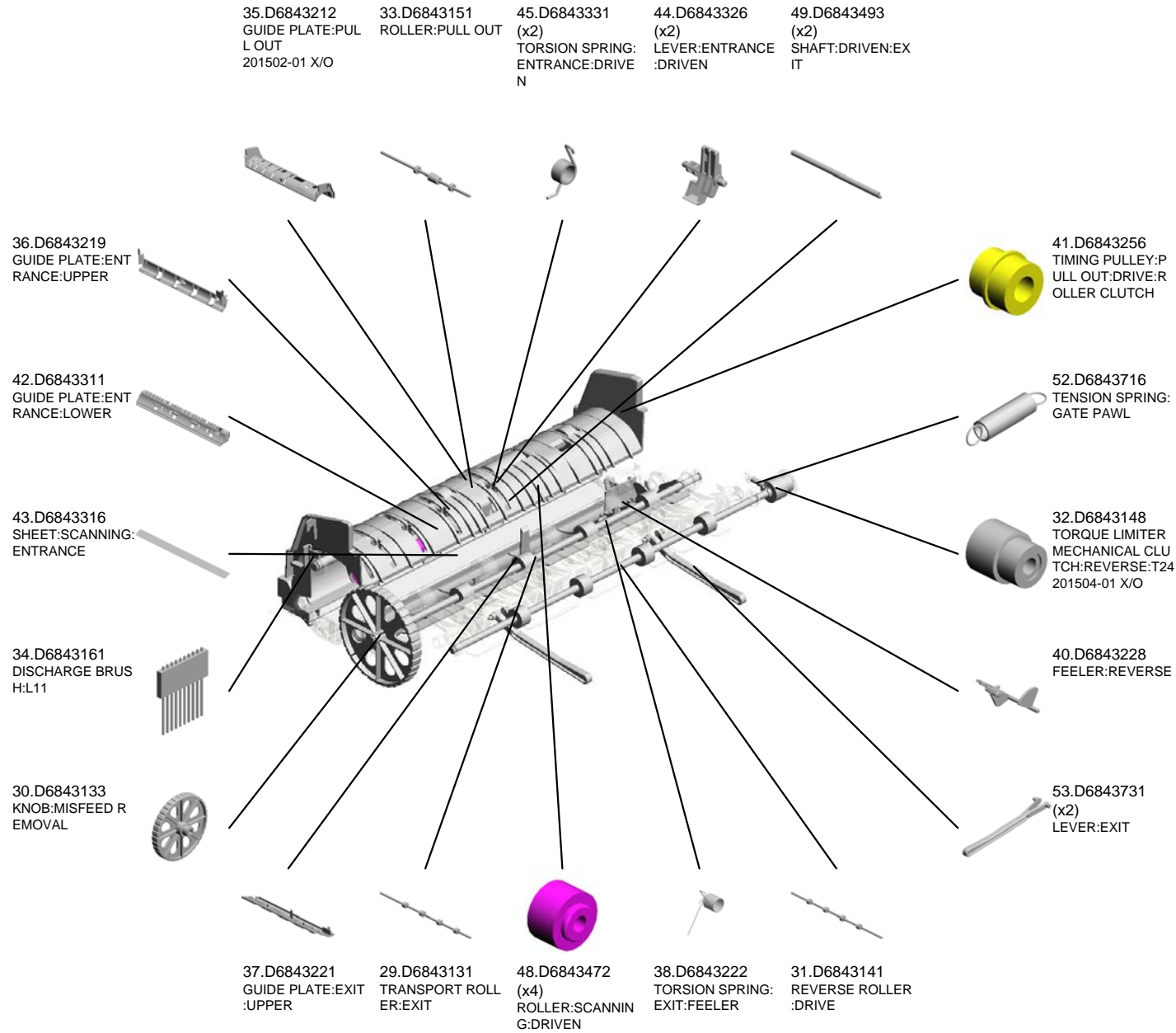
U003 ORIGINAL TRANSFER



- 3.04543006Q TAPPING SCREW - M3X6
- 26.D5783213 (x5) FEELER:PAPER SIZE SENSOR
- 25.D3664849 CUSHION - PICK-UP ARM
- 8.07433808 (x2) RADIAL BALL BEARING: DIA8XDIA16X5
- 13.AA143788 PIN:GUIDE PLATE: PAPER FEED



U003 ORIGINAL TRANSFER



U003 ORIGINAL TRANSFER

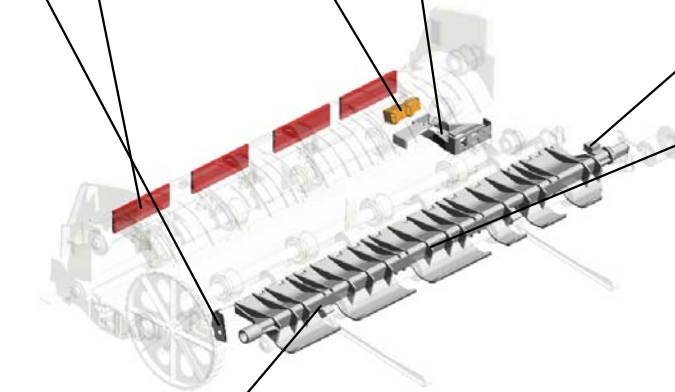
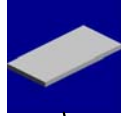
55.D6844491
(x4)
DAMPING INSULAT
ION:GUIDE PLATE

56.GW010007
PHOTO REFLECTI
ON SENSOR:EXIT

63.D6843232
HOLDER:PAPER F
EED SENSOR
201601-01 X/O



57.M3643221
SPRING PLATE:EA
RTH:EXIT



65.D7793740
CUSHION:GATE P
AWL:ASS'Y
201406-03 X/O



64.D6843717
GATE PAWL:REVE
RSE
201406-06 X/O

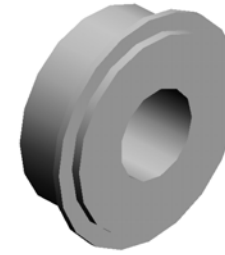
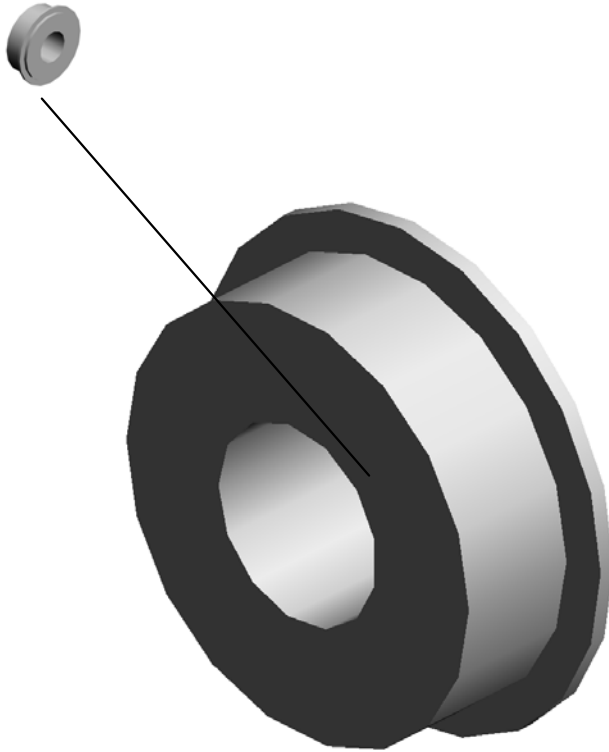


67.D6843736
(x2)
STOPPER:LEVER:
EXIT
201612-01



U003_S001
TRANSPORT ROLLER:ENTRANCE

7.07433806
RADIAL BALL BEA
RING: DIA6X DIA13X
5

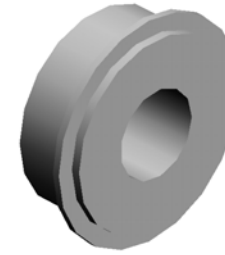
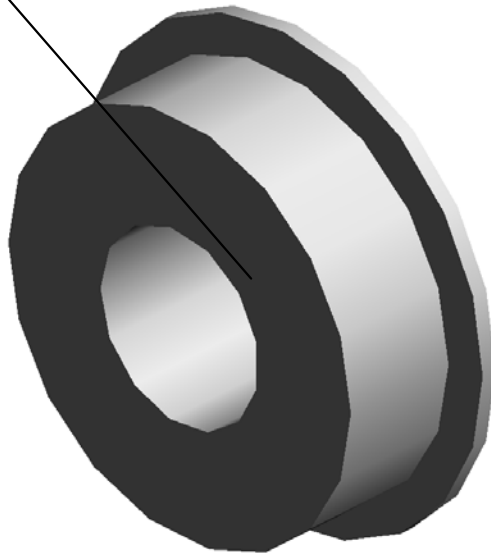


27.D6843111
TRANSPORT ROLL
ER:ENTRANCE

U001	U002	U003	U004	U005	U006	U007
------	------	------	------	------	------	------

U003_S002
TRANSPORT ROLLER:EXIT

7.07433806
RADIAL BALL BEA
RING: DIA6X DIA13X
5

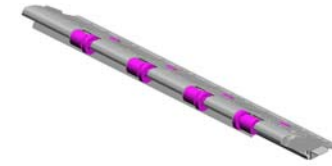


28.D6843121
TRANSPORT ROLL
ER:EXIT

U001	U002	U003	U004	U005	U006	U007
------	------	------	------	------	------	------

U003_S003
GUIDE PLATE:EXIT:LOWER:ASS'Y

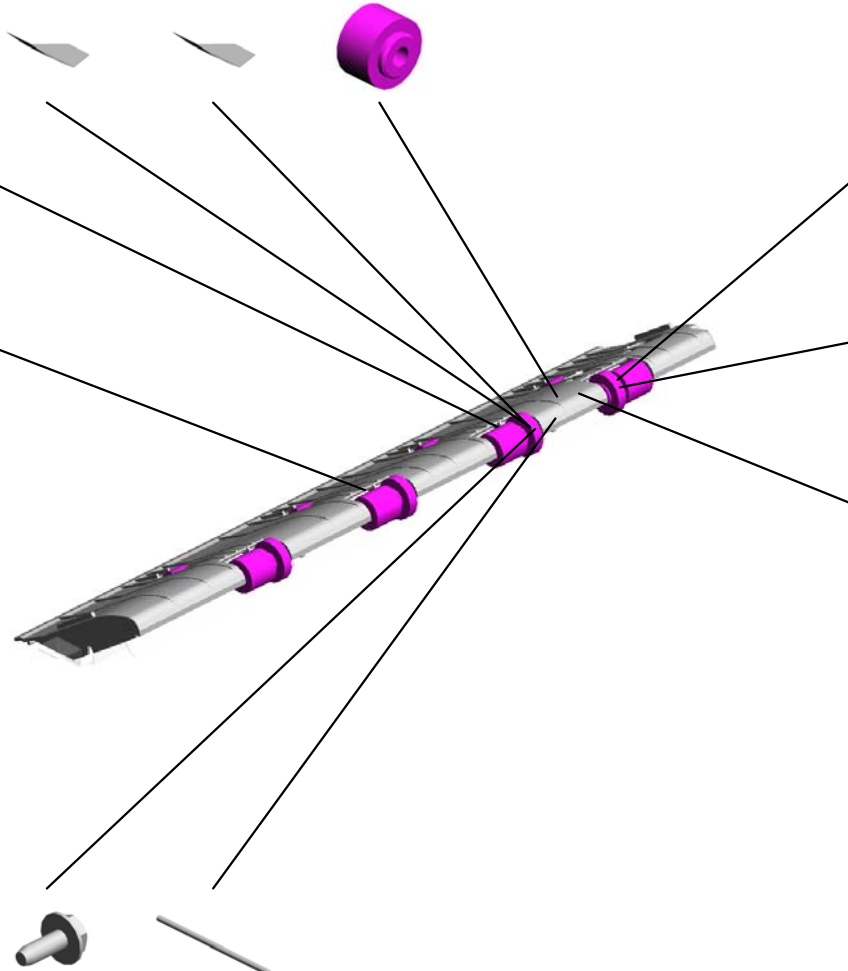
19.B7893417 (x2) SPRING PLATE - EXIT DRIVEN
 20.B7893418 (x2) SPRING PLATE - EXIT DRIVEN AUXILIARY
 48.D6843472 (x4) ROLLER:SCANNING:DRIVEN



66.D6843400
GUIDE PLATE:EXIT:LOWER:ASS'Y

49.D6843493 (x2) SHAFT:DRIVEN:EXIT

46.D6843411
GUIDE PLATE:EXIT:LOWER



54.D6844116
LEVER:TRANSMITTED RUBBER STAMP

21.B7893712 (x4)
EXIT DRIVEN ROLLER

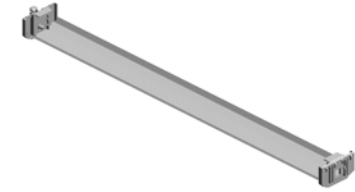
39.D6843224
TORSION SPRING: TRANSMITTED RUBBER STAMP

1.04503008N (x2)
TAPPING SCREW - M3X8

47.D6843426 (x2)
SHAFT:DRIVEN:EXIT

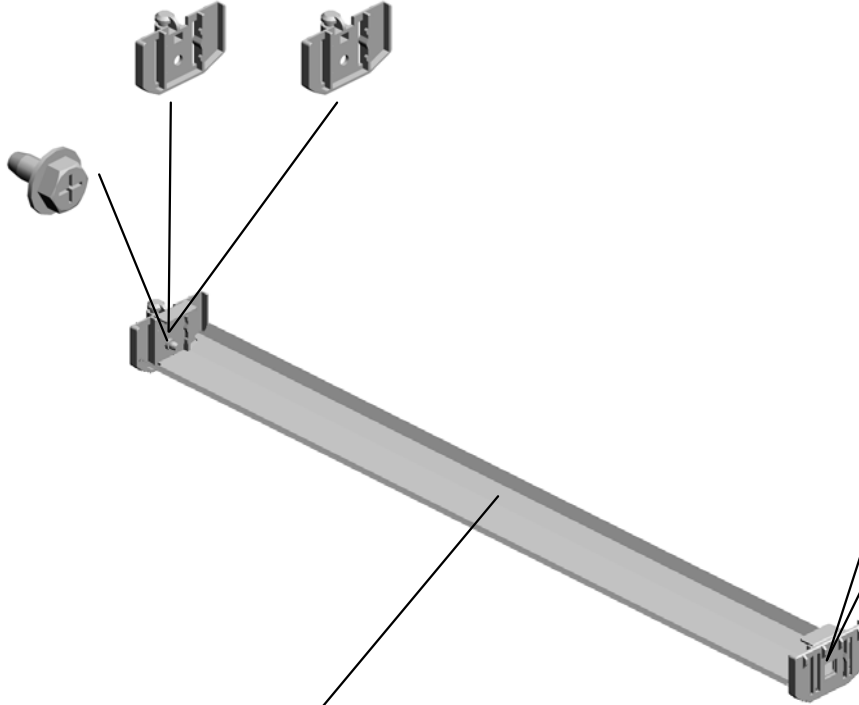
U003_S004
GUIDE PLATE:SCANNING:ASS'Y

60.D6843554 62.D6843534
GUIDE:NON-CONT GUIDE:CONTACT:F
ACT SCANNING:FR RONT
ONT 201309-09



50.D7793531
[A]
GUIDE PLATE:SCA
NNING:ASS'Y
201511-02 X/O

2.04513006N
TAPPING SCREW -
3X6



59.D6843553
GUIDE:NON-CONT
ACT SCANNING:IN
NER BACK

61.D6843533
GUIDE:CONTACT:I
NNER BACK
201309-08

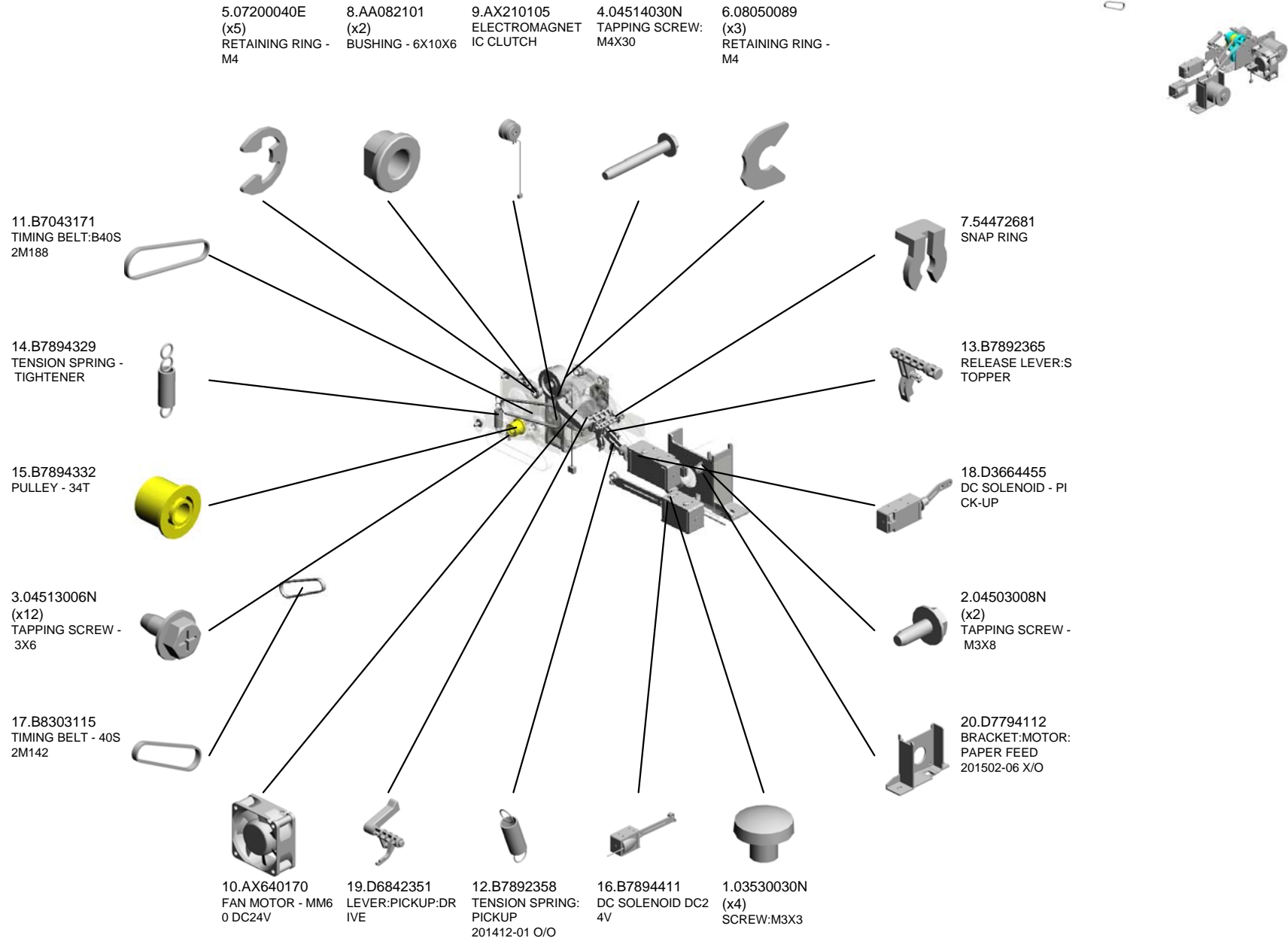
58.D6843532
GUIDE PLATE:SCA
NNING



D6843531
[A]
GUIDE PLATE:SCA
NNING:ASS'Y
201511-02 X/O

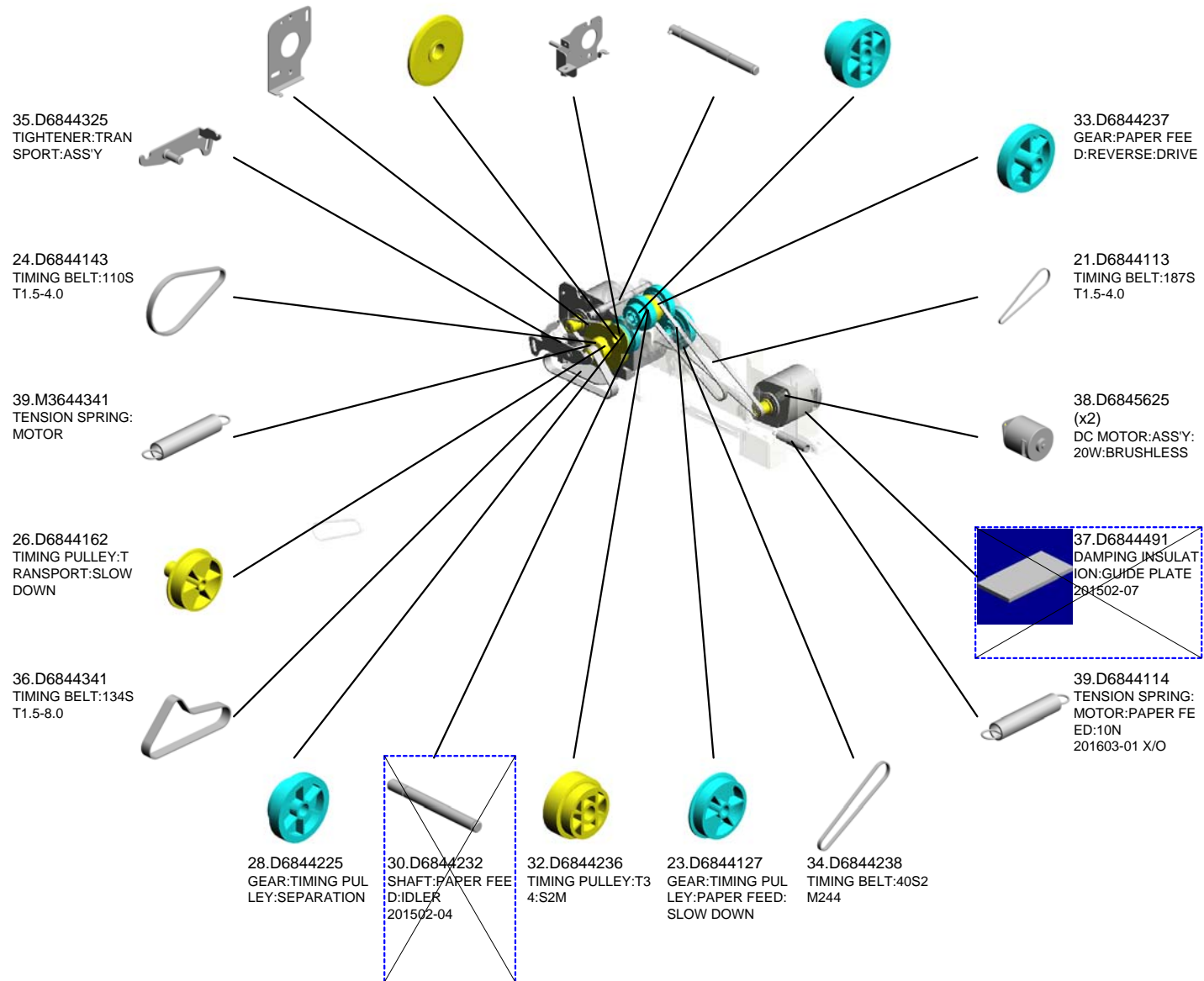
U001	U002	U003	U004	U005	U006	U007
------	------	------	------	------	------	------

U004 MAIN DRIVE



U004 MAIN DRIVE

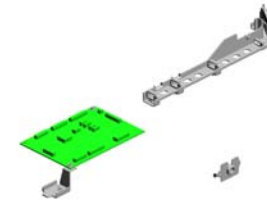
- 22.D6844122 BRACKET:MOTOR
- 29.D6844227 FLANGE:PULLEY
- 25.D6844155 BRACKET:SLOW DOWN:TRANSPORT:ASS'Y
- 27.D6844215 SHAFT:MAGNETIC CLUTCH:ASS'Y
- 31.D6844235 GEAR:PAPER FEED:MIDDLE



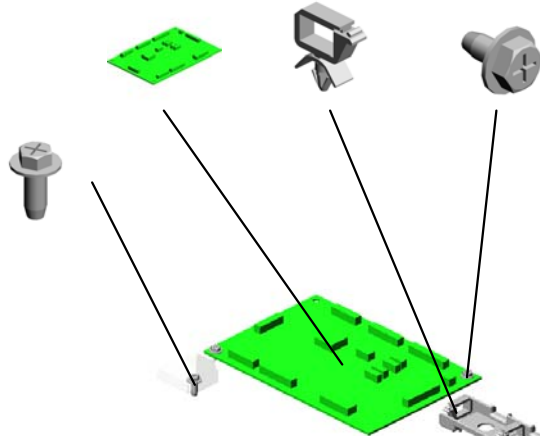
U001	U002	U003	U004	U005	U006	U007
------	------	------	------	------	------	------

U005 ELECTRICAL

7.D7795100 PCB:MAIN CONTR
OL:ASS'Y
3.11050508 (x3)
HARNESS CLAMP -
LWS-0711
2.04513006N (x3)
TAPPING SCREW -
3X6



1.04504010N
TAPPING SCREW:
M4X10



6.D6845751
GUIDE:HARNESS

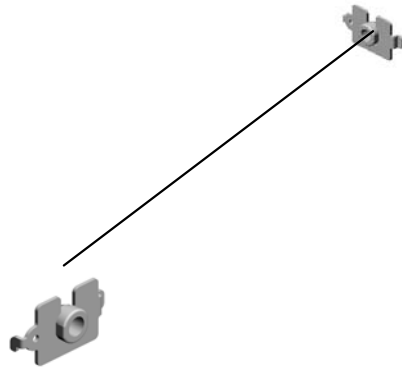


8.16072240
(x2)
FERRITE CORE:K3
T 16.00X8.00X10.0
0
201603-02

4.11050516
(x2)
CLAMP



5.D6845010
CABLE:INTERFAC
E CABLE:ASS'Y



U006
ARDF

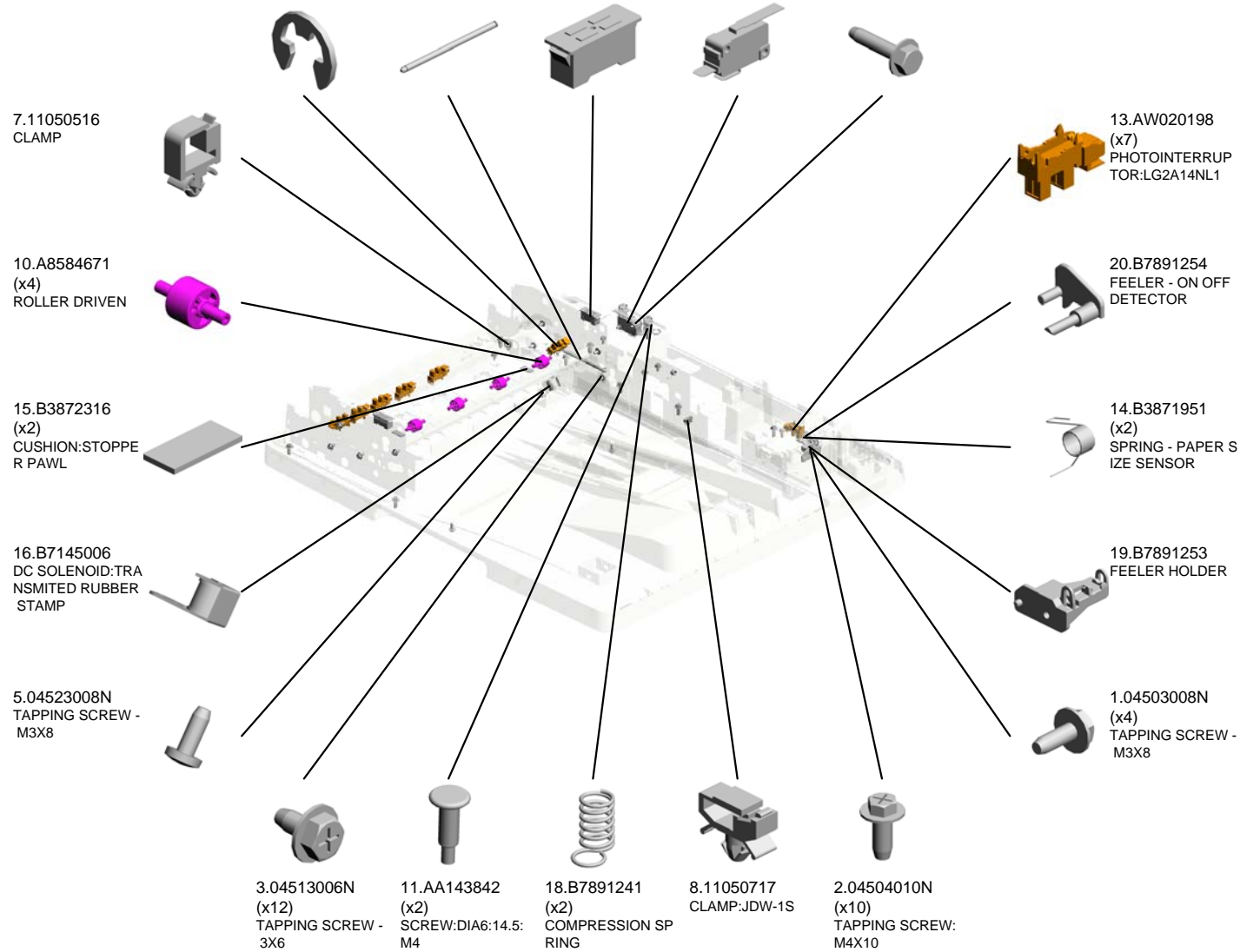
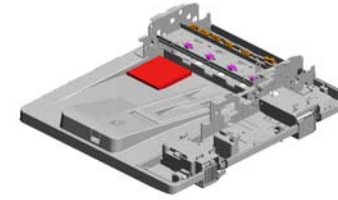
3.D7790004
ARDF:NON-OPTIO
N
201611-01 O/O



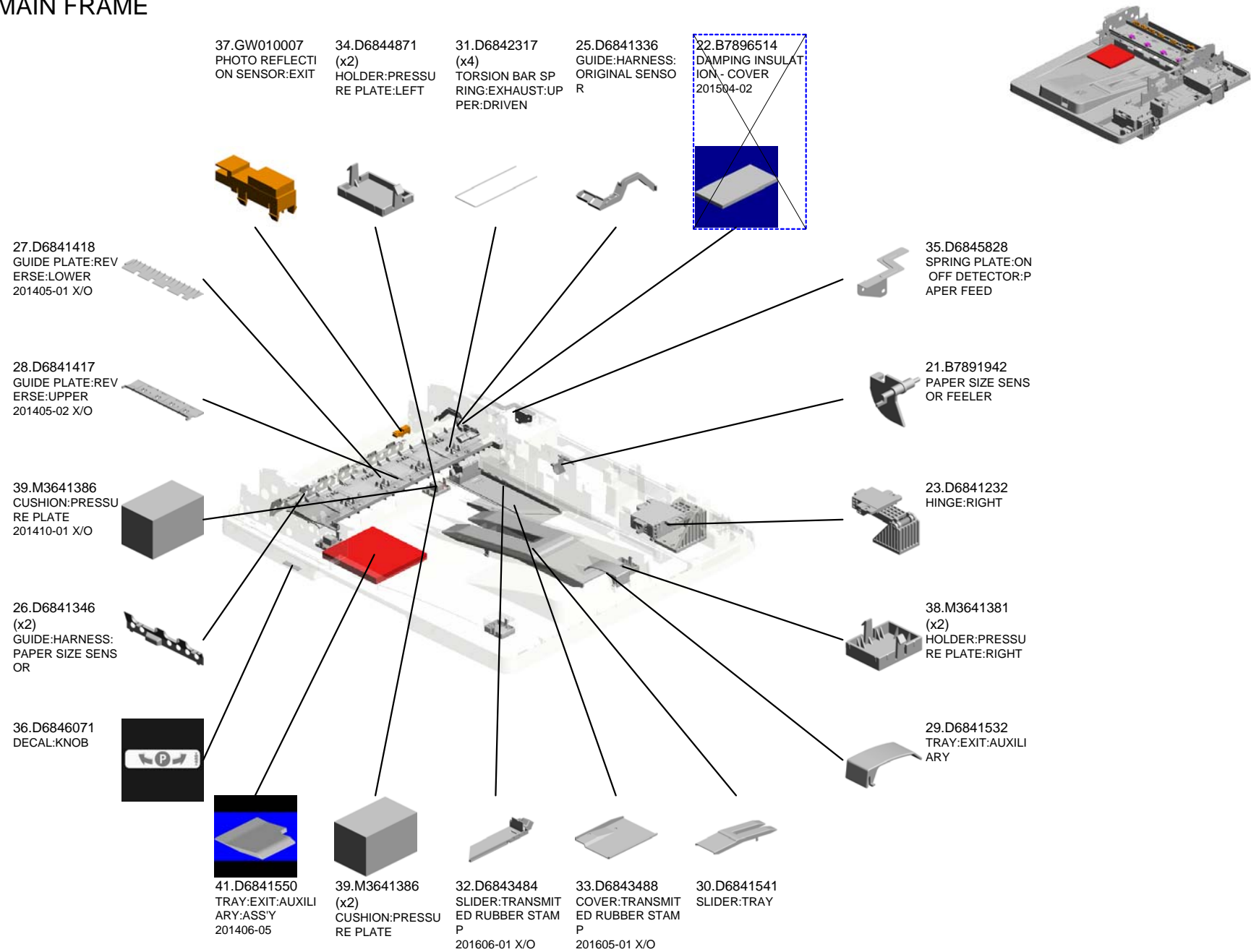
U001	U002	U003	U004	U005	U006	U007
------	------	------	------	------	------	------

U007 MAIN FRAME

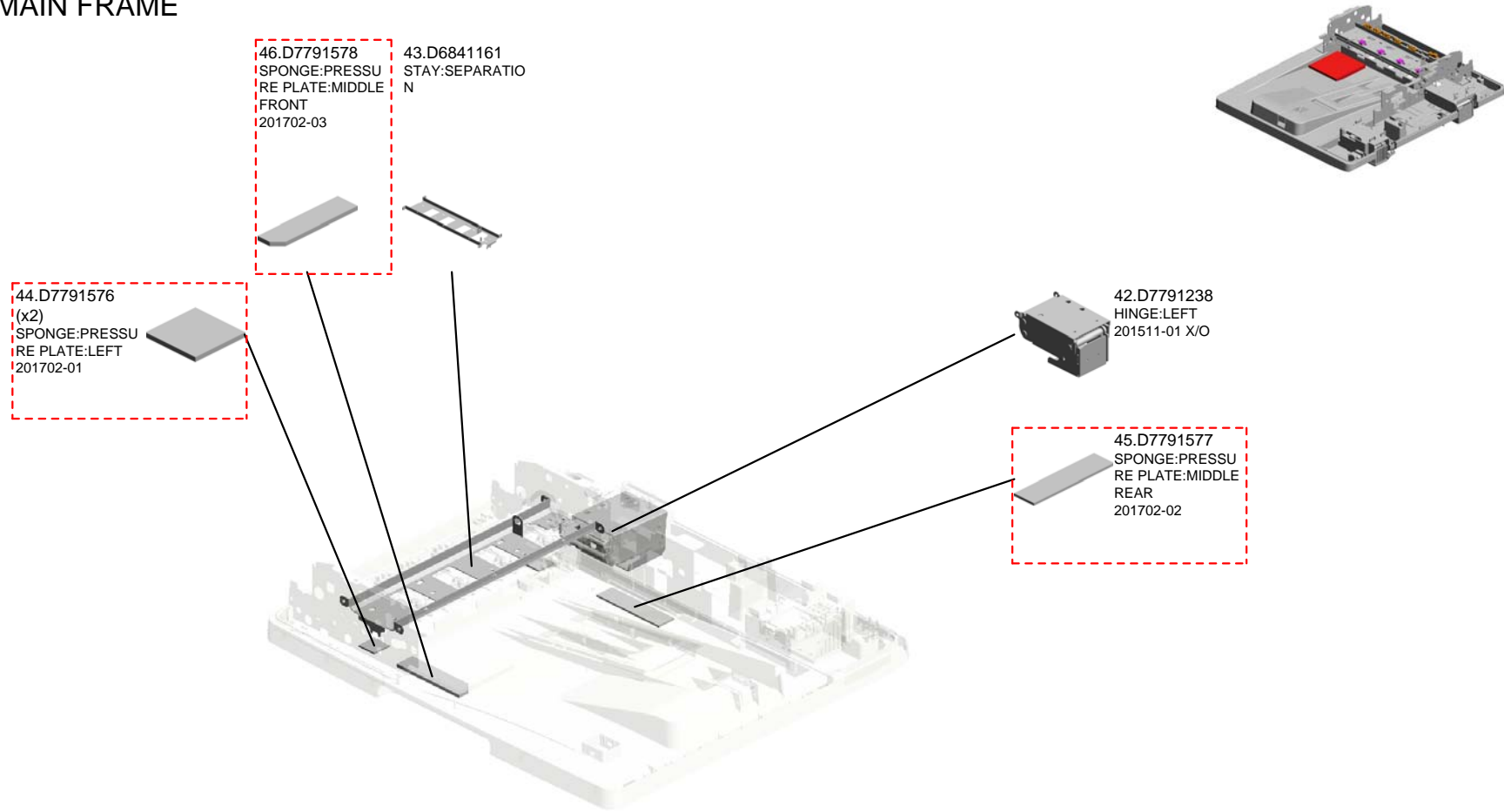
- 6.07200030E (x2) RETAINING RING - M3
- 17.B7891231 SHAFT HINGE- LEFT
- 12.AG070513 (x2) MAGNET CATCH
- 9.12042612 MICRO SWITCH:D3 V-16506-3C25
- 4.04513014N (x2) TAPPING SCREW: 3X14



U007 MAIN FRAME



U007 MAIN FRAME



ACCESSORIES



1.04513006N
(x2)
TAPPING SCREW - 3X6



2.A5486111
SCREW:POSITIONING:HINGE



3.A8597211
STEPPED SCREW



4.D5406121
(x2)
FULL DUG POINT SCREW:FIX:HINGE



5.D6846031
DECAL:ORIGINAL TABLE



6.D6846061
DECAL::ORIGINAL:MANY LANGUAGES

Exclusive Parts

Number	Part Name	Group	ID
52152621	SNAP RING - M6	U001	4
54472681	SNAP RING	U002	6
		U002_S001	6
		U003	10
		U004	7
		U007	7
A3764599	SIDE FENCE PAD	U001	5
A5486111	SCREW:POSITIONING:HINGE	ACCESSORIES	2
A6281225	BUSHING - 8MM	U002_S001	7
A8584671	ROLLER DRIVEN	U001	6
		U007	10
A8592112	DRIVE SHAFT - PAPER FEED BELT	U002_S001	8
A8592121	GEAR - 22Z	U002_S001	9
A8592167	GEAR - 22Z	U002_S001	10
A8592319	BASE CUSHION	U002_S001	11
A8597211	STEPPED SCREW	ACCESSORIES	3
AA063435	COMPRESSION SPRING:PAPER FEED:JOINT	U002_S001	12
AA082101	BUSHING - 6X10X6	U003	11
		U004	8
AA082144	BUSHING - 8X12X7	U002_S001	13
		U003	12
AA132013	SPACER	U002_S001	14
AA143788	PIN:GUIDE PLATE:PAPER FEED	U001	7
		U003	13
AA143842	SCREW:DIA6:14.5:M4	U007	11
AG070513	MAGNET CATCH	U001	8
		U007	12
AW020198	PHOTOINTERRUPTOR:LG2A14NL1	U001	10
		U003	14
		U007	13
AX210105	ELECTROMAGNETIC CLUTCH	U004	9
AX640170	FAN MOTOR - MM60 DC24V	U004	10
B3863320	SPRING:BELT:PAPER FEED:8N	U002_S001	15
B3871951	SPRING - PAPER SIZE SENSOR	U007	14
B3872113	ROLLER - PAPER FEED BELT	U002_S001	16
B3872161	PICKUP ROLLER	U002_S001	17
B3872316	CUSHION:STOPPER PAWL	U001	11

Number	Part Name	Group	ID
		U002_S001	18
		U007	15
B7043171	TIMING BELT:B40S2M188	U004	11
B7145006	DC SOLENOID:TRANSMITED RUBBER STAMP	U007	16
B7891231	SHAFT HINGE- LEFT	U007	17
B7891241	COMPRESSION SPRING	U007	18
B7891253	FEELER HOLDER	U007	19
B7891254	FEELER - ON OFF DETECTOR	U007	20
B7891322	SPRING PLATE - EXPOSURE GLASS	U003	15
B7891942	PAPER SIZE SENSOR FEELER	U007	21
B7892114	PAPER FEED BELT ROLLER	U002_S001	19
B7892115	BELT HOLDER	U002_S001	20
B7892132	PAPER FEED GUIDE - FRONT	U002_S001	21
B7892161	PICKUP ROLLER SHAFT	U002_S001	22
B7892163	COLLAR:PICKUP	U002_S001	23
B7892164	TIMING PULLEY:PICKUP:S2M	U002_S001	24
B7892181	TORSION SPRING - PICKUP	U002_S001	25
B7892358	TENSION SPRING:PICKUP	U004	12
B7892365	RELEASE LEVER:STOPPER	U004	13
B7892371	PICKUP GUIDE	U002	26
B7892431	ORIGINAL STOPPER HOOK	U002	27
B7892436	TENSION SPRING - STOPPER	U002	28
B7893126	TIMING PULLEY - 25T	U003	16
B7893136	GEAR - 20Z	U003	17
B7893223	DISCHARGE BRUSH - EXIT	U003	18
B7893331	COMPRESSION SPRING - DRIVEN ROLLER	U001	12
B7893417	SPRING PLATE - EXIT DRIVEN	U003_S003	19
B7893418	SPRING PLATE - EXIT DRIVEN AUXILIARY	U003_S003	20
B7893712	EXIT DRIVEN ROLLER	U003_S003	21
B7893718	GATE PAWL CUSHION - SMALL	U001	13
B7893721	LEVER:GATE PAWL:REVERSE	U003	23
B7894257	PULLEY FLANGE	U003	24
B7894329	TENSION SPRING - TIGHTENER	U004	14
B7894332	PULLEY - 34T	U004	15

Exclusive Parts

Number	Part Name	Group	ID
B7894411	DC SOLENOID DC24V	U004	16
B7894873	POSITIONING PLATE - FRONT	U001	14
B7894874	POSITIONING PLATE - REAR	U001	15
B7896511	CUSHION - REAR SMALL	U001	16
B7896514	DAMPING INSULATION - COVER	U001	17
B8024611	PRESSURE PLATE	U001	18
B8303115	TIMING BELT - 40S2M142	U004	17
D3664455	DC SOLENOID - PICK-UP	U004	18
D3664849	CUSHION - PICK-UP ARM	U003	25
D5406121	FULL DUG POINT SCREW:FIX:HIN GE	ACCESSORIES	4
D5412241	REVERSE ROLLER:PAPER FEED	U002	30
D5783213	FEELER:PAPER SIZE SENSOR	U003	26
D5784631	FEELER:ORIGINAL SENSOR:TRAIL ING EDGE	U001	20
D6841161	STAY:SEPARATION	U007	43
D6841232	HINGE:RIGHT	U007	23
D6841336	GUIDE:HARNESS:ORIGINAL SENS OR	U007	25
D6841346	GUIDE:HARNESS:PAPER SIZE SE NSOR	U007	26
D6841417	GUIDE PLATE:REVERSE:UPPER	U007	28
D6841418	GUIDE PLATE:REVERSE:LOWER	U007	27
D6841532	TRAY:EXIT:AUXILIARY	U007	29
D6841541	SLIDER:TRAY	U007	30
D6841550	TRAY:EXIT:AUXILIARY:ASS'Y	U007	41
D6842100	PAPER FEED UNIT:ASS'Y	U002_S001	31
D6842111	SHAFT:PAPER FEED:DRIVE	U002_S001	32
D6842134	ARM:PICKUP	U002_S001	33
D6842142	FEELER:ORIGINAL SENSOR	U001	21
D6842151	HOLDER:PICKUP	U002_S001	34
D6842163	SYNCHRONOUS BELT:40S2M122	U002_S001	35
D6842171	PAPER FEED BELT	U002_S001	29
D6842210	SHAFT:REVERSE	U002	36
D6842216	STOPPER:SHAFT:RF	U002	37
D6842261	TORQUE LIMITER MECHANICAL C LUTCH:SEPARATOR:ORVA	U002	38
D6842311	GUIDE PLATE:PAPER FEED	U002	39

Number	Part Name	Group	ID
D6842312	COVER:REVERSE	U002	40
D6842313	SHEET:SEPARATION SUB-UNIT	U002	48
D6842314	PAD:SEPARATION SUB-UNIT	U002	49
D6842317	TORSION BAR SPRING:EXHAUST: UPPER:DRIVEN	U007	31
D6842322	GUIDE PLATE:REVERSE	U002	41
D6842331	GUIDE:PULL OUT	U002	42
D6842351	LEVER:PICKUP:DRIVE	U004	19
D6842412	PAD:STOPPER:ORIGINAL	U002	44
D6842413	STOPPER:ORIGINAL	U002	43
D6843111	TRANSPORT ROLLER:ENTRANCE	U003_S001	27
D6843121	TRANSPORT ROLLER:EXIT	U003_S002	28
D6843131	TRANSPORT ROLLER:EXIT	U003	29
D6843133	KNOB:MISFEED REMOVAL	U003	30
D6843137	GEAR:CAM:STOPPER:ORIGINAL	U002	45
D6843141	REVERSE ROLLER:DRIVE	U003	31
D6843148	TORQUE LIMITER MECHANICAL C LUTCH:REVERSE:T24	U003	32
D6843151	ROLLER:PULL OUT	U003	33
D6843161	DISCHARGE BRUSH:L11	U003	34
D6843212	GUIDE PLATE:PULL OUT	U003	35
D6843219	GUIDE PLATE:ENTRANCE:UPPER	U003	36
D6843221	GUIDE PLATE:EXIT:UPPER	U003	37
D6843222	TORSION SPRING:EXIT:FEELER	U003	38
D6843224	TORSION SPRING:TRANSMITED R UBBER STAMP	U003_S003	39
D6843228	FEELER:REVERSE	U003	40
D6843232	HOLDER:PAPER FEED SENSOR	U003	63
D6843256	TIMING PULLEY:PULL OUT:DRIVE: ROLLER CLUTCH	U003	41
D6843311	GUIDE PLATE:ENTRANCE:LOWER	U003	42
D6843316	SHEET:SCANNING:ENTRANCE	U003	43
D6843326	LEVER:ENTRANCE:DRIVEN	U003	44
D6843331	TORSION SPRING:ENTRANCE:DRI VEN	U003	45
D6843400	GUIDE PLATE:EXIT:LOWER:ASS'Y	U003_S003	66
D6843411	GUIDE PLATE:EXIT:LOWER	U003_S003	46
D6843426	SHAFT:DRIVEN:EXIT	U003_S003	47

Exclusive Parts

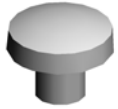
Number	Part Name	Group	ID
D6843472	ROLLER:SCANNING:DRIVEN	U003	48
		U003_S003	48
D6843484	SLIDER:TRANSMITED RUBBER STAMP	U007	32
D6843488	COVER:TRANSMITED RUBBER STAMP	U007	33
D6843493	SHAFT:DRIVEN:EXIT	U003	49
		U003_S003	49
D6843532	GUIDE PLATE:SCANNING	U003_S004	58
D6843533	GUIDE:CONTACT:INNER BACK	U003_S004	61
D6843534	GUIDE:CONTACT:FRONT	U003_S004	62
D6843553	GUIDE:NON-CONTACT SCANNING:INNER BACK	U003_S004	59
D6843554	GUIDE:NON-CONTACT SCANNING:FRONT	U003_S004	60
D6843716	TENSION SPRING:GATE PAWL	U003	52
D6843717	GATE PAWL:REVERSE	U003	64
D6843731	LEVER:EXIT	U003	53
D6843736	STOPPER:LEVER:EXIT	U003	67
D6844113	TIMING BELT:187ST1.5-4.0	U004	21
D6844114	TENSION SPRING:MOTOR:PAPER FEED:10N	U004	39
D6844116	LEVER:TRANSMITED RUBBER STAMP	U003_S003	54
D6844122	BRACKET:MOTOR	U004	22
D6844127	GEAR:TIMING PULLEY:PAPER FEED:SLOW DOWN	U004	23
D6844143	TIMING BELT:110ST1.5-4.0	U004	24
D6844155	BRACKET:SLOW DOWN:TRANSPORT:ASS'Y	U004	25
D6844162	TIMING PULLEY:TRANSPORT:SLOW DOWN	U004	26
D6844215	SHAFT:MAGNETIC CLUTCH:ASS'Y	U004	27
D6844225	GEAR:TIMING PULLEY:SEPARATION	U004	28
D6844227	FLANGE:PULLEY	U004	29
D6844235	GEAR:PAPER FEED:MIDDLE	U004	31
D6844236	TIMING PULLEY:T34:S2M	U004	32

Number	Part Name	Group	ID
D6844237	GEAR:PAPER FEED:REVERSE:DRIVE	U004	33
D6844238	TIMING BELT:40S2M244	U004	34
D6844325	TIGHTENER:TRANSPORT:ASS'Y	U004	35
D6844341	TIMING BELT:134ST1.5-8.0	U004	36
D6844491	DAMPING INSULATION:GUIDE PLATE	U002	46
		U003	55
D6844621	COVER:PAPER FEED:UPPER	U001	25
D6844626	SOUND PROOFING MATERIAL:COVER:PAPER FEED:UPPER	U001	39
D6844631	COVER:LEFT	U001	26
D6844641	BRACKET:DRIVEN ROLLER:PULL OUT	U001	27
D6844643	DRIVEN ROLLER:PULL OUT:PRESS FIT	U001	28
D6844678	TORSION BAR SPRING:REVERSE	U001	43
D6844722	ORIGINAL TABLE	U001	30
D6844732	COVER:ORIGINAL TABLE	U001	31
D6844741	SIDE FENCE	U001	32
D6844751	ORIGINAL TABLE:TRANSPARENT	U001	33
D6844871	HOLDER:PRESSURE PLATE:LEFT	U007	34
D6845010	CABLE:INTERFACE CABLE:ASS'Y	U005	5
D6845625	DC MOTOR:ASS'Y:20W:BRUSHLESS	U004	38
D6845751	GUIDE:HARNESS	U005	6
D6845828	SPRING PLATE:ON OFF DETECTOR:PAPER FEED	U007	35
D6846021	DECAL:SIZE:ORIGINAL	U001	34
D6846031	DECAL:ORIGINAL TABLE	ACCESSORIES	5
D6846041	DECAL:SIDE FENCE	U001	35
D6846061	DECAL::ORIGINAL:MANY LANGUAGES	ACCESSORIES	6
D6846071	DECAL:KNOB	U007	36
D7790004	ARDF:NON-OPTION	U006	3
D7791238	HINGE:LEFT	U007	42
D7791576	SPONGE:PRESSURE PLATE:LEFT	U007	44
D7791577	SPONGE:PRESSURE PLATE:MIDDLE REAR	U007	45

Exclusive Parts

Number	Part Name	Group	ID
D7791578	SPONGE:PRESSURE PLATE:MIDDLE FRONT	U007	46
D7793531	GUIDE PLATE:SCANNING:ASS'Y	U003_S004	50
D7793740	CUSHION:GATE PAWL:ASS'Y	U003	65
D7794112	BRACKET:MOTOR:PAPER FEED	U004	20
D7794516	COVER:FRONT:ASS'Y	U001	22
D7794526	COVER:REAR:ASS'Y	U001	23
D7794610	COVER:PAPER FEED:ASS'Y	U001_S001	37
D7794616	SOUND PROOFING MATERIAL:COVER:PAPER FEED:FRONT	U001_S001	40
D7794617	SOUND PROOFING MATERIAL:COVER:PAPER FEED:INNER BACK	U001_S001	41
D7794618	CUSHION:PAPER FEED UNIT	U001_S001	42
D7794760	REFLECTION PHOTO SENSOR:ORIGINAL TABLE:ASS'Y	U001	9
D7795100	PCB:MAIN CONTROL:ASS'Y	U005	7
G4123831	PULLEY - 22Z	U002_S001	47
GW010007	PHOTO REFLECTION SENSOR:EXIT	U003	56
		U007	37
M3641381	HOLDER:PRESSURE PLATE:RIGHT	U007	38
M3641386	CUSHION:PRESSURE PLATE	U007	39
M3643221	SPRING PLATE:EARTH:EXIT	U003	57
M3644341	TENSION SPRING:MOTOR	U004	39
M3644823	TAPE:PRESSURE PLATE	U001	36

Standard Parts



03530030N
SCREW:M3X3



04503008N
TAPPING SCREW - M3X8



04504010N
TAPPING SCREW:M4X10



04513006N
TAPPING SCREW - 3X6



04513014N
TAPPING SCREW:3X14



04514030N
TAPPING SCREW:M4X30



04523008N
TAPPING SCREW - M3X8



04543006Q
TAPPING SCREW - M3X6



06220080E
SPRING PIN - 2X8MM



06320120G
PARALLEL PIN - 2X12



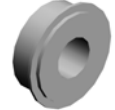
07200030E
RETAINING RING - M3



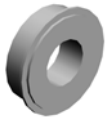
07200040E
RETAINING RING - M4



07200060E
RETAINING RING - M6



07433806
RADIAL BALL BEARING: DIA6
XDIA13X5



07433808
RADIAL BALL BEARING: DIA8
XDIA16X5



08050089
RETAINING RING - M4



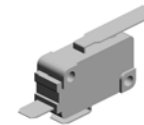
11050508
HARNES CLAMP - LWS-071
1



11050516
CLAMP



11050717
CLAMP:JDW-1S



12042612
MICRO SWITCH:D3V-16506-3
C25



16072240
FERRITE CORE:K3 T 16.00X8
.00X10.00

PM Part List

Number	Part Name	Num	Group	ID
D6842171	PAPER FEED BELT	1	U002_S001	29

Design Change List

Number	Title	Set	Old Part		New Part		Index No.		Q'ty	Interchg		Reason	Cut-in S/N
			P/N	Name	P/N	Name	Group	ID		Indiv.	Set		
201702-01	1702 Modification	A			D7791576	SPONGE:PRESSURE PLATE:LEFT	U007	44	1				D77917:
					D7791576	SPONGE:PRESSURE PLATE:LEFT	U007	44	1				
201702-02	1702 Modification	A			D7791577	SPONGE:PRESSURE PLATE:MIDDLE REAR	U007	45	1				D77917:
201702-03	1702 Modification	A			D7791578	SPONGE:PRESSURE PLATE:MIDDLE FRONT	U007	46	1				D77917:
201612-01	1612 Modification	-			D6843736	STOPPER:LEVER:EXIT	U003	67	1				D77917:
					D6843736	STOPPER:LEVER:EXIT	U003	67	1				
201611-01	1611 Modification	-	D7790003	ARDF:COOK-B:NON-OPTION	D7790004	ARDF:NON-OPTION	U006	3	1	O/O			D77917:
201608-01	1608 Modification	-			D6843400	GUIDE PLATE:EXIT:LOWER:ASS'Y	U003_S003	66	1				D77917:
201606-01	1606 Modification	-	D6843483	SLIDER:TRANSMITTED RUBBER STAMP	D6843484	SLIDER:TRANSMITTED RUBBER STAMP	U007	32	1	X/O			D77917:
201605-01	1605 Modification	-	D6843486	COVER:TRANSMITTED RUBBER STAMP	D6843488	COVER:TRANSMITTED RUBBER STAMP	U007	33	1	X/O			D77917:
201605-02	1605 Modification	-	D6842411	STOPPER:ORIGINAL	D6842413	STOPPER:ORIGINAL	U002	43	1	X/O			D77917:
201605-03	1605 Modification	-	D6844677	TORSION BAR SPRING:REVERSE	D6844678	TORSION BAR SPRING:REVERSE	U001	43	4	X/O			D77917:

Design Change List

Number	Title	Set	Old Part		New Part		Index No.		Q'ty	Interchg		Reason	Cut-in S/N
			P/N	Name	P/N	Name	Group	ID		Indiv.	Set		
201603-01	1603 Modification	-	M3644341	TENSION SPRING:MOTOR	D6844114	TENSION SPRING:MOTOR:PAPER FEED:10N	U004	39	1	X/O			D77917:
201603-02	1603 Modification	-			16072240	FERRITE CORE:K3 T 16.00X8.00X10.00	U005	8	1				D77917:
					16072240	FERRITE CORE:K3 T 16.00X8.00X10.00	U005	8	1				
201601-01	1601 Modification	-	D6849229	HOLDER:PAPER FEED SENSOR	D6843232	HOLDER:PAPER FEED SENSOR	U003	63	1	X/O			D77917:
201511-01	1511 Modification	-	D7791237	HINGE:LEFT	D7791238	HINGE:LEFT	U007	42	1	X/O			D77917:
201511-02	1511 Modification	-	D6843531	GUIDE PLATE:SCANNING:ASS'Y	D7793531	GUIDE PLATE:SCANNING:ASS'Y	U003_S004	50	1	X/O			D77917:
201510-01	1510 Modification	-			D6844626	SOUND PROOFING MATERIAL:COVER:PAPER FEED:UPPER	U001	39	1				D77917:
201510-02	1510 Modification	-	D6844612	COVER:PAPER FEED	D7794610	COVER:PAPER FEED:ASS'Y	U001_S001	37	1	X/O			D77917:
201510-03	1510 Modification	-			D7794616	SOUND PROOFING MATERIAL:COVER:PAPER FEED:FRONT	U001_S001	40	1				D77917:
201510-04	1510 Modification	-			D7794617	SOUND PROOFING MATERIAL:COVER:PAPER FEED:INNER BACK	U001_S001	41	1				D77917:
201510-05	1510 Modification	-			D7794618	CUSHION:PAPER FEED UNIT	U001_S001	42	1				D77917:

Design Change List

Number	Title	Set	Old Part		New Part		Index No.		Q'ty	Interchg		Reason	Cut-in S/N
			P/N	Name	P/N	Name	Group	ID		Indiv.	Set		
		-			D7794618	CUSHION:PAPER FEED UNIT	U001_S001	42	1				
201507-01	1507 Modification	-	D6844736	DAMPING INSULATION:COVER:SMALL			U001	38	1				D77917:
			D6844736	DAMPING INSULATION:COVER:SMALL			U001	38	7				
201507-02	1507 Modification	-	D6844511	COVER:FRONT	D7794516	COVER:FRONT:ASSY	U001	22	1	O/O			D77917:
201507-03	1507 Modification	-	D6844521	COVER:REAR	D7794526	COVER:REAR:ASSY	U001	23	1	O/O			D77917:
201506-01	1506 Modification	-			D6842313	SHEET:SEPARATION SUB-UNIT	U002	48	1				D77917:
201506-02	1506 Modification	-			D6842314	PAD:SEPARATION SUB-UNIT	U002	49	1				D77917:
201505-01	1505 Modification	-	D7790002	ARDF:COOK-B:NON-OPTION	D7790003	ARDF:COOK-B:NON-OPTION	U006	2	1	O/O			D77917:
201504-01	1504 Modification	-	D6843146	TORQUE LIMITER MECHANICAL CLUTCH:REVERSE:T24	D6843148	TORQUE LIMITER MECHANICAL CLUTCH:REVERSE:T24	U003	32	1	X/O			D77917:
201504-02	1504 Modification	-	B7896514	DAMPING INSULATION - COVER			U001	17	1				D77917:
			B7896514	DAMPING INSULATION - COVER			U001	17	1				
			B7896514	DAMPING INSULATION - COVER			U001	17	1				
			B7896514	DAMPING INSULATION - COVER			U001	17	1				

Design Change List

Number	Title	Set	Old Part		New Part		Index No.		Q'ty	Interchg		Reason	Cut-in S/N
			P/N	Name	P/N	Name	Group	ID		Indiv.	Set		
		-	B7896514	DAMPING INSULATION - COVER			U007	22	1				
201502-01	1502 Modification	A	D6843211	GUIDE PLATE:PULL OUT	D6843212	GUIDE PLATE:PULL OUT	U003	35	1	X/O			D77917:
201502-02	1502 Modification	A	D6844677	TORSION BAR SPRING:REVERSE			U001	29	4	X/O			D77917:
201502-04	1502 Modification	-	D6844232	SHAFT:PAPER FEED:IDLER			U004	30	1				D77917:
201502-05	1502 Modification	-	D3664849	CUSHION - PICKUP ARM			U001	19	1				D77917:
201502-06	1502 Modification	-	D6844112	BRACKET:MOTOR:PAPER FEED	D7794112	BRACKET:MOTOR:PAPER FEED	U004	20	1	X/O			D77917:
201502-07	1502 Modification	-	D6844491	DAMPING INSULATION:GUIDE PLATE			U004	37	1				D77917:
201501-01	1501 Modification	-	AW010150	PHOTO REFLECTION SENSOR:ORIGINAL TRAY	D7794760	REFLECTION PHOTO SENSOR:ORIGINAL TABLE:ASS'Y	U001	9	3	O/O			D77917:
201412-01	1412 Modification	-	B7892357	TENSION SPRING - STOPPER	B7892358	TENSION SPRING:PICKUP	U004	12	1	O/O			D77917:
201410-01	1410 Modification	-	B3514538	CUSHION - PICKUP ROLLER ARM	M3641386	CUSHION:PRESSURE PLATE	U007	39	1	X/O			D77917:
201409-01	1409 Modification	-	D5412121	PAPER FEED BELT	D6842171	PAPER FEED BELT	U002_S001	29	1	X/O			D77917:
201408-01	1408 Modification	-			D6841161	STAY:SEPARATION	U007	43	1				D77917:
201405-01	1405 Modification	-	D6841411	GUIDE PLATE:REVERSE:LOWER	D6841418	GUIDE PLATE:REVERSE:LOWER	U007	27	1	X/O			D77917:
201405-02	1405 Modification	-	D6841412	GUIDE PLATE:R	D6841417	GUIDE PLATE:R	U007	28	1	X/O			D77917:

Design Change List

Number	Title	Set	Old Part		New Part		Index No.		Q'ty	Interchg		Reason	Cut-in S/N
			P/N	Name	P/N	Name	Group	ID		Indiv.	Set		
		-		EVERSE:UPPER		EVERSE:UPPER							
201407-01	1407 Modification	A	D6844676	TORSION BAR SPRING:REVERSE	D6844677	TORSION BAR SPRING:REVERSE	U001	29	1	X/X			D77917:
			D6844676	TORSION BAR SPRING:REVERSE	D6844677	TORSION BAR SPRING:REVERSE	U001	29	1	X/X			
			D6844676	TORSION BAR SPRING:REVERSE	D6844677	TORSION BAR SPRING:REVERSE	U001	29	1	X/X			
			D6844676	TORSION BAR SPRING:REVERSE	D6844677	TORSION BAR SPRING:REVERSE	U001	29	1	X/X			
201407-02	1407 Modification	A	D6844721	ORIGINAL TABLE	D6844722	ORIGINAL TABLE	U001	30	1	X/O			D77917:
201406-01	1406 Modification	-			B3514538	CUSHION - PICK UP ROLLER ARM	U007	40	1				D77917:
201406-02	1406 Modification	-	D6844611	COVER:PAPER FEED	D6844612	COVER:PAPER FEED	U001	37	1	X/O			D77917:
201406-03	1406 Modification	-	B7893718	GATE PAWL CUSHION - SMALL	D7793740	CUSHION:GATE PAWL:ASS'Y	U003	65	1	X/O			D77917:
201406-04	1406 Modification	-	D6841236	HINGE:LEFT	D7791237	HINGE:LEFT	U007	42	1	X/O			D77917:
201406-05	1406 Modification	-			D6841550	TRAY:EXIT:AUXILIARY:ASS'Y	U007	41	1				D77917:
201406-06	1406 Modification	-	D6843713	GATE PAWL:REVERSE	D6843717	GATE PAWL:REVERSE	U003	64	1	X/O			D77917:
201406-07	1407 Modification	-	D6845400	HARNESS:SENSOR:PAPER SIZE SENSOR	D7795400	HARNESS:SENSOR:PAPER SIZE SENSOR				X/O			D77917:
201404-01	1404 Modification	-			D6849229	HOLDER:PAPER FEED SENSOR	U003	63	1				D77917:
201404-02	1404 Modification	-	D7790001	ARDF	D7790002	ARDF:COOK-B:NON-OPTION	U006	1	1	O/O			D77917:
201309-05	1309 Modification	-			D6843532	GUIDE PLATE:SCANNING	U003_S004	58	1				D77917:

Design Change List

Number	Title	Set	Old Part		New Part		Index No.		Q'ty	Interchg		Reason	Cut-in S/N
			P/N	Name	P/N	Name	Group	ID		Indiv.	Set		
201309-06	1309 Modification	-			D6843553	GUIDE:NON-CONTACT SCANNING:INNER BACK	U003_S004	59	1				D77917:
201309-07	1309 Modification	-			D6843554	GUIDE:NON-CONTACT SCANNING:FRONT	U003_S004	60	1				D77917:
201309-08	1309 Modification	-			D6843533	GUIDE:CONTACT:INNER BACK	U003_S004	61	1				D77917:
201309-09	1309 Modification	-			D6843534	GUIDE:CONTACT:FRONT	U003_S004	62	1				D77917:

