

---

## 3. Disassembly and Reassembly

---

### 3.1. Precautions when replacing parts

---

#### 3.1.1. Precautions when assembling and disassembling

---

- Use only approved Samsung spare parts. Ensure that part number, product name, any voltage, current or temperature rating are correct. Failure to do so could result in damage to the machine, circuit overload, fire or electric shock.
- Do not make any unauthorized changes or additions to the printer, these could cause the printer to malfunction and create electric shock or fire hazards.
- Take care when dismantling the unit to note where each screw goes. There are 19 different screws. Use of the wrong screw could lead to system failure, short circuit or electric shock.
- Do not disassemble the LSU unit. Once it is disassembled dust is admitted to the mirror chamber and will seriously degrade print quality. There are no serviceable parts inside.
- Regularly check the condition of the power cord, plug and socket. Bad contacts could lead to overheating and fire. Damaged cables could lead to electric shock or unit malfunction.

#### 3.1.2. Precautions when handling PBA

---

Static electricity can damage a PBA, always use approved anti-static precautions when handling or storing a PBA.

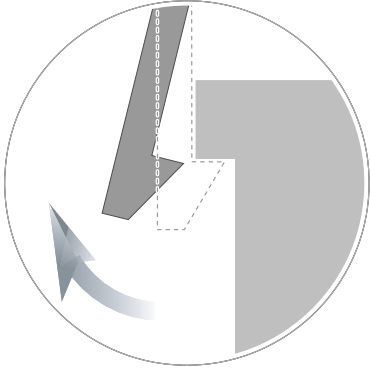
- **Precautions when moving and storing PBA**
  - 1) Please keep PBA in a conductive case, anti-static bag, or wrapped in aluminum foil.
  - 2) Do not store a PBA where it is exposed to direct sunlight.
- **Precautions when replacing PBA**
  - 1) Disconnect power connectors first, before disconnecting other cables.
  - 2) Do not touch any soldered connections, connector terminals or other electronic parts when handling insulated parts.
- **Precautions when checking PBA**
  - 1) Before touching a PBA, please touch other grounded areas of the chassis to discharge any static electrical charge on the body.
  - 2) Take care not to touch the PBA with your bare hands or metal objects as you could create a short circuit or get an electric shock. Take extra care when handling PBAs with moving parts fitted such as sensors, motors or lamps as they may get hot.
  - 3) Take care when fitting, or removing, screws. Look out for hidden screws. Always ensure that the correct screw is used and always ensure that when toothed washers are removed they are refitted in their original positions.

### 3.1.3. Releasing Plastic Latches

---

Many of the parts are held in place with plastic latches. The latches break easily; release them carefully.

To remove such parts, press the hook end of the latch away from the part to which it is latched.



## 3.2. Screws used in the printer

The screws listed in the table below are used in this printer. Please ensure that, when you disassemble the printer, you keep a note of which screw is used for which part and that, when reassembling the printer, the correct screws are used in the appropriate places.



### NOTE

This list is based on CLP-365W. So, this list may differ from your machine depending on its model.

Parts Code	Location	Description	Qty
6003-000196	FRAME-MAIN	SCREW-TAPTYPE;PWH,+ ,B,M3,L10,NI PLT,SWRCH18A	11
6003-000269	FRAME-MAIN	SCREW-TAPTYPE;BH,+ ,-,S,M3,L6,ZPC(WHT),SWRCH18A,-	13
6003-000196	FUSER	SCREW-TAPTYPE;PWH,+ ,B,M3,L10,NI PLT,SWRCH18A	5
6003-000282	FUSER	SCREW-TAPTYPE;BH,+ ,-,B,M3,L8,ZPC(BLK),SWRCH18A,-	2
6003-000152	FRAME BASE-PAPER PATH	SCREW-TAPTYPE;PH,+ ,-,B,M2,L10,ZPC(WHT),SWRCH18A,-	1
6003-000282	FRAME BASE-PAPER PATH	SCREW-TAPTYPE;BH,+ ,-,B,M3,L8,ZPC(BLK),SWRCH18A,-	4
6003-000196	FRAME	SCREW-TAPTYPE;PWH,+ ,B,M3,L10,NI PLT,SWRCH18A	5
6003-000269	FRAME	SCREW-TAPTYPE;BH,+ ,-,S,M3,L6,ZPC(WHT),SWRCH18A,-	43
6003-000301	FRAME	SCREW-TAPTYPE;BH,+ ,S,M4,L6,ZPC(WHT),SWRCH18A	1
6003-000269	FRAME-SUB_LEFT	SCREW-TAPTYPE;BH,+ ,-,S,M3,L6,ZPC(WHT),SWRCH18A,-	26
6003-000269	FRAME-SUB_FRON	SCREW-TAPTYPE;BH,+ ,-,S,M3,L6,ZPC(WHT),SWRCH18A,-	1
6003-000196	FRAME-SUB_CTD	SCREW-TAPTYPE;PWH,+ ,B,M3,L10,NI PLT,SWRCH18A	2
6003-000269	FRAME-SUB RIGHT	SCREW-TAPTYPE;BH,+ ,-,S,M3,L6,ZPC(WHT),SWRCH18A,-	24
6002-000440	DRIVE	SCREW-TAPPING;PWH,+ ,2,M3,L8,ZPC(BLK),SWRCH18A	3
6003-000269	DRIVE	SCREW-TAPTYPE;BH,+ ,-,S,M3,L6,ZPC(WHT),SWRCH18A,-	8
6003-000282	LSU	SCREW-TAPTYPE;BH,+ ,-,B,M3,L8,ZPC(BLK),SWRCH18A,-	5
6003-000196	COVER-FRONT	SCREW-TAPTYPE;PWH,+ ,B,M3,L10,NI PLT,SWRCH18A	5
6003-000196	COVER-REAR	SCREW-TAPTYPE;PWH,+ ,B,M3,L10,NI PLT,SWRCH18A	2
6003-000264	COVER-TOP	SCREW-TAPTYPE;PWH,+ ,-,B,M3,L6,ZPC(WHT),SWRCH18A,-	2
6003-000196	ETC	SCREW-TAPTYPE;PWH,+ ,B,M3,L10,NI PLT,SWRCH18A	4
6003-000269	COVER-TOP	SCREW-TAPTYPE;BH,+ ,-,S,M3,L6,ZPC(WHT),SWRCH18A,-	2
6003-000269	COVER-REAR	SCREW-TAPTYPE;BH,+ ,-,S,M3,L6,ZPC(WHT),SWRCH18A,-	4

### 3.3. Replacing the maintenance parts

#### 3.3.1. ITB Unit

1. Open the front cover.
2. Remove YMCK toner cartridges and waste toner container.



3. Remove the imaging unit.



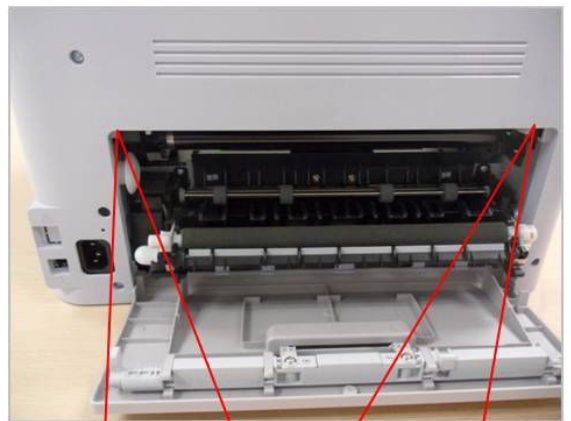
4. Unplug the ITB connector from the top-right.



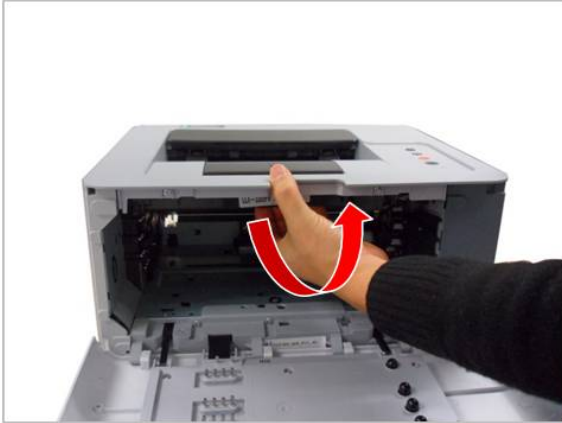
5. Open the rear cover. Release the FRAME-TRANSFER from the left hole.



6. Pull down the both levers.



7. Remove the ITB Unit while holding its handle, and pulling in direction of arrow.



### 3.3.2. Fuser Unit

---

1. Open the rear cover door.
2. Remove the rear cover after removing 4 screws.



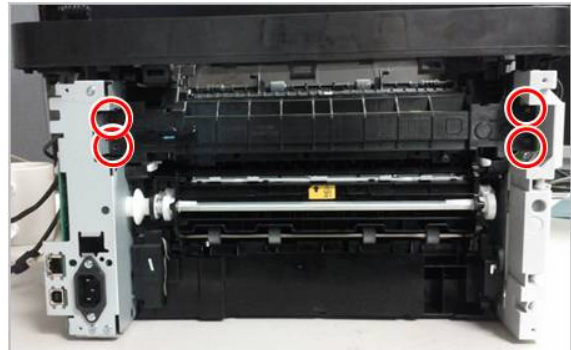
3. Remove the right cover.



4. Unplug 2 connectors from the SMPS board and main board.



5. Remove 4 screws. And then remove the fuser unit.

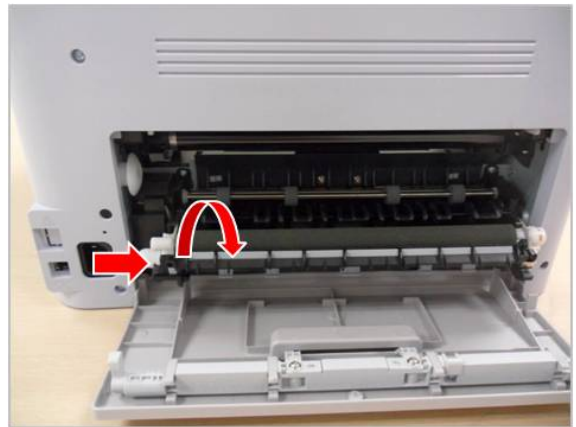


### 3.3.3. Transfer(T2) roller

1. Open the rear cover door. Release the FRAME-TRANSFER from the left hole by pulling it to the direction of arrow.



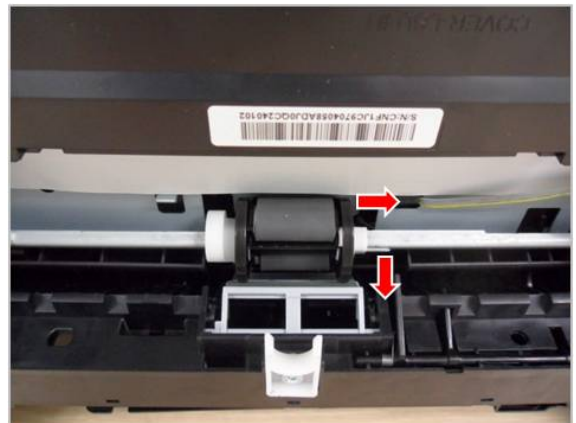
2. Push and release the FRAME-TRANSFER.



### 3.3.4. Pick up roller

1. Remove the cassette. See the bottom of the machine.
2. Release the stopper from the shaft. Move the right HOUSING-PICK UP to the right.

3. Remove the pick up rubber.





### 3.4. Replacing the main SVC parts

**NOTE**

Before service, remove all toner cartridges and waste toner container.

#### 3.4.1. Cover

- 1. Open the rear cover door.
- 2. Remove the rear cove after removing 4 screws.



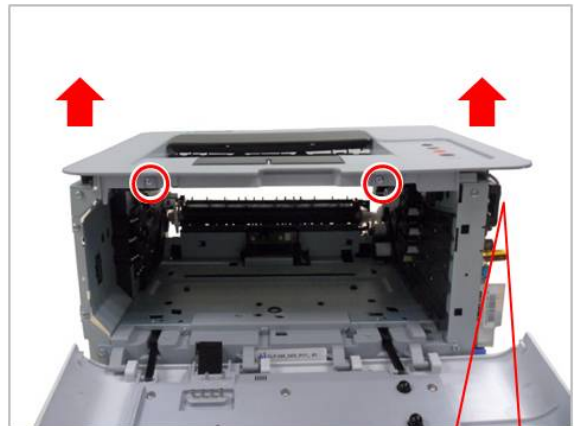
- 3. Release the right cover.



- 4. Release the left cover.



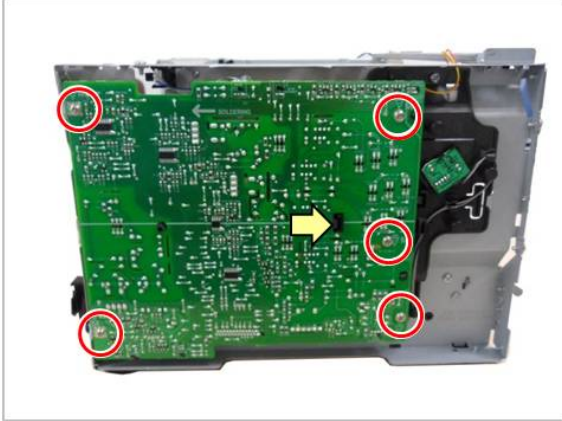
- 5. Unplug the OPE connector from the main board. Remove 2 screws. And lift up the top cover.





### 3.4.2. HVPS board

1. Remove the left cover. (Refer to 3.4.1)
2. Remove 5 screws. Release the lock. And release the HVPS board.



3. Unplug all connectors from the HVPS board.



### 3.4.3. LSU

1. Remove the cassette. Stand the machine to see the bottom.
2. Remove 3 screws. Unplug the flat cable. And release the LSU.



### 3.4.4. FRAME BASE-PAPER PATH

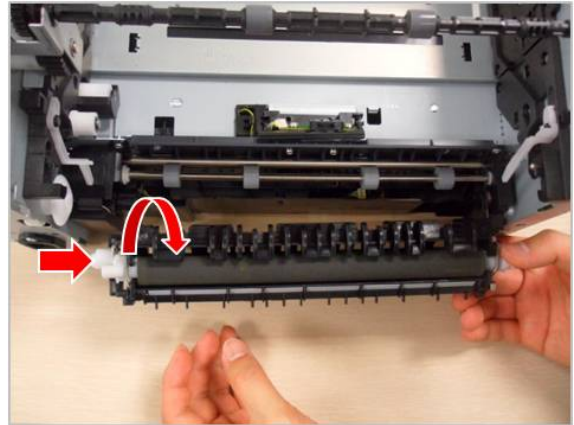
1. Remove the right cover.
2. Unplug the connector from the PBA-CONNECTOR. Remove the main board after removing 4 screws and connectors.



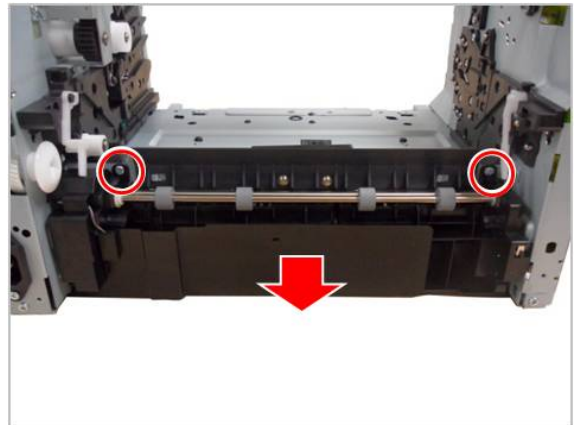
3. Remove 4 screw from the bottom of the machine.



4. Remove the FRAME-TRANSFER.

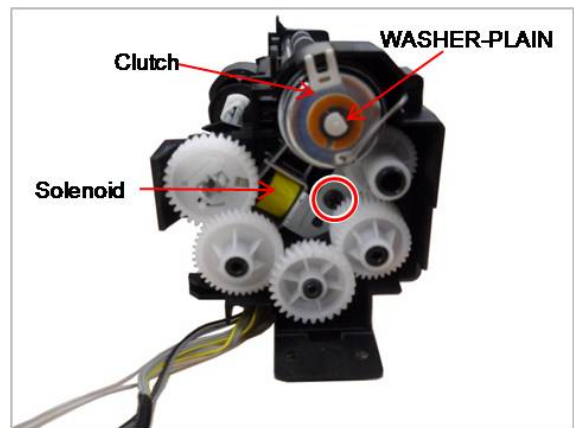


5. Remove the FRAME BASE-PAPER PATH after removing 2 screws.



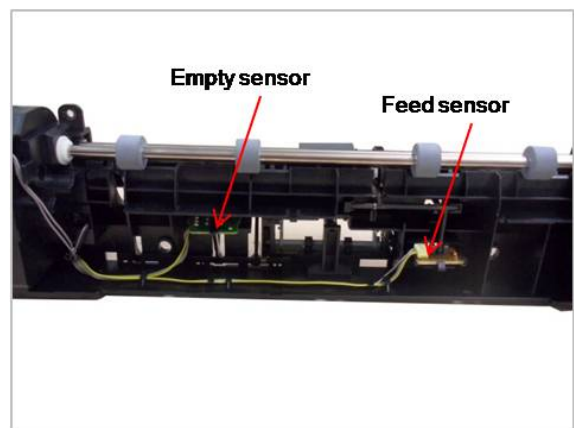
### 3.4.5. Regi clutch and Pick up solenoid

1. Remove the FRAME BASE-PAPER PATH. (Refer to 3.4.4)
2. Release the regi. clutch after removing the WASHER-PLAIN.
3. Remove 4 gears.
4. Release the pick up solenoid after removing 1 screw.



### 3.4.6. Feed sensor and Empty sensor

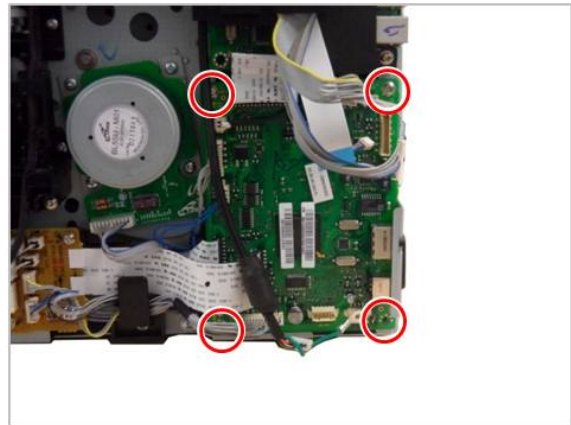
1. Remove the FRAME BASE-PAPER PATH. (Refer to 3.4.4)
2. Remove the COVER-PICK UP.
3. Release the Empty sensor and Feed sensor.



### 3.4.7. Main board

---

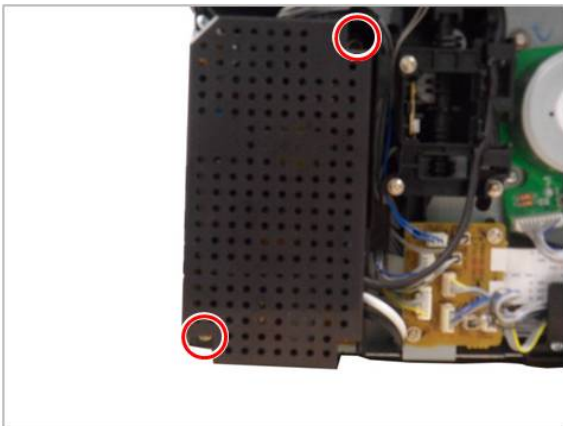
1. Remove the right cover. (Refer to 3.4.1)
2. Unplug all connector. Remove 4 screws. And remove the main board.



### 3.4.8. SMPS board

---

1. Remove the right cover. (Refer to 3.4.1)
2. Remove the SMPS cover after removing 2 screws.
3. Unplug all connectors on SMPS board. Remove 2 screws. And remove the SMPS board.

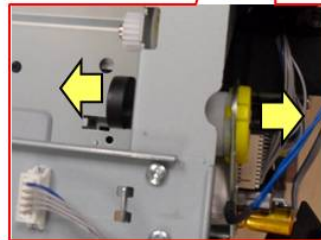
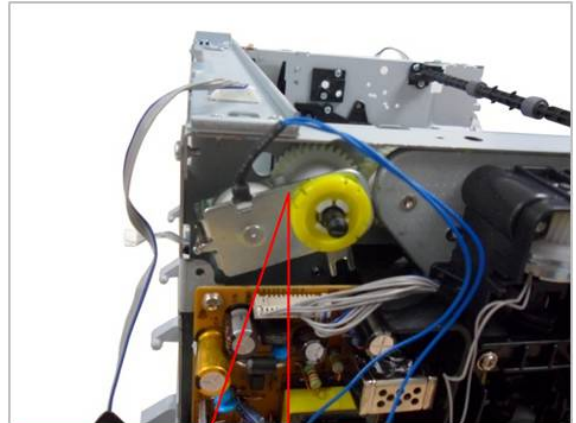


### 3.4.9. Cam Solenoid

1. Remove the right and top cover. (Refer to 3.4.1)
2. Remove the Cam Solenoid cover after removing 1 screw.



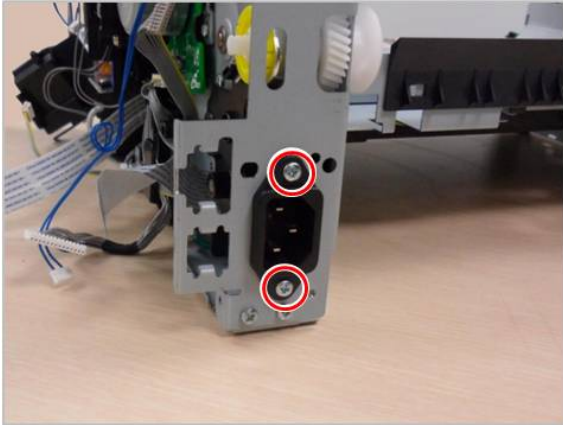
3. Release the Cam Solenoid.



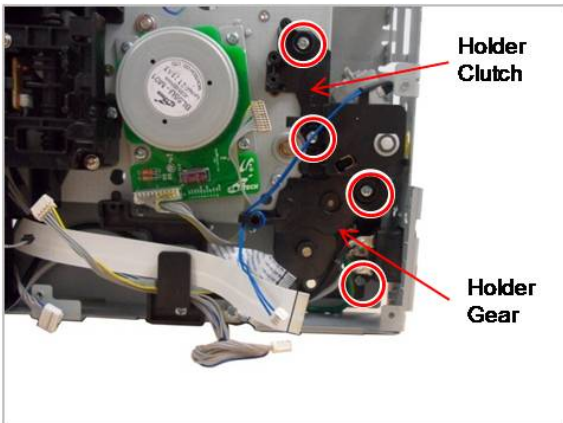


### 3.4.10. Main Drive Unit

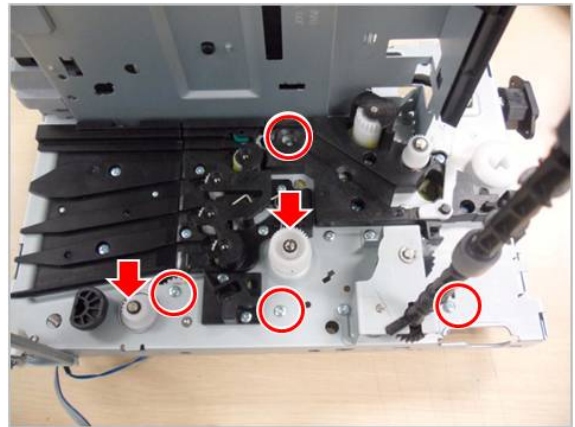
1. Remove the right cover. (Refer to 3.4.1)
2. Remove the main board. (Refer to 3.4.7)
3. Remove 2 screws.



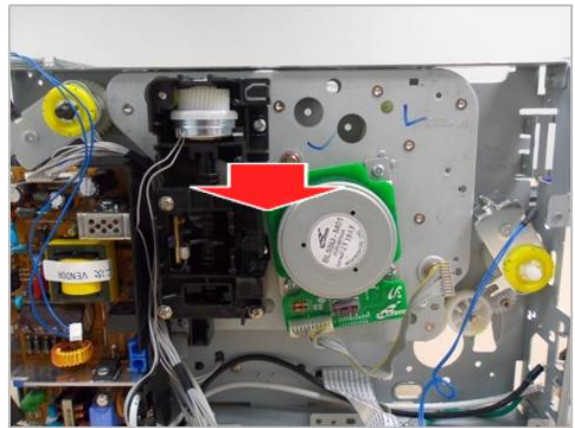
4. Remove the Holder-Clutch and Holder-Gear after removing 4 screws.



5. Remove 4 screws and 2 gears inside the right frame.



6. Release the Main Drive Unit.



## 4. Alignment and Troubleshooting

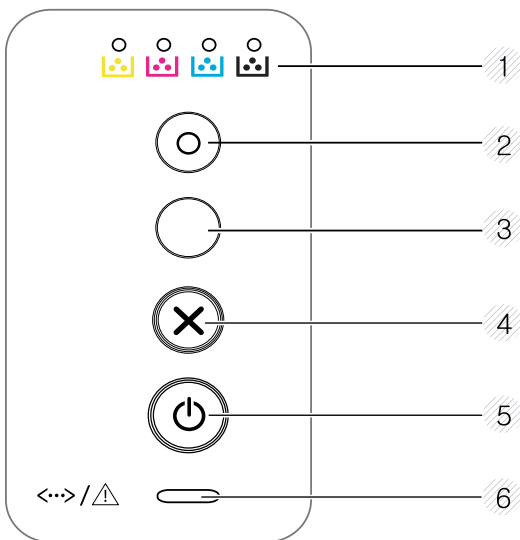
### 4.1. Alignment and Adjustments

This chapter describes the main functions for service, such as the product maintenance method, the test output related to maintenance and repair, Jam removing method, and so on. It includes the contents of user guide.

#### 4.1.1. Control panel


##### NOTE

- This control panel may differ from your machine depending on its model. There are various types of control panels.



1	Toner LED	Shows the status of the toner.
2	Eco	Turn into eco mode to reduce toner consumption and paper usage when pc-printing only.
3	WPS (CLP-36xW only)	Configures the wireless network connection easily without a computer. <ul style="list-style-type: none"> <li><b>Manual print</b> <ul style="list-style-type: none"> <li>Press this button each time you load a sheet of paper in the tray if you have selected <b>Manual Feeder</b> for <b>Source</b> in your printer driver.</li> </ul> </li> </ul>



3	Print screen (CLP-36x only)	<ul style="list-style-type: none"> <li>• <b>Prints the screen</b> <ul style="list-style-type: none"> <li>• Press this button and the green LED will start blinking. If you want to print only the active screen, release the button when the green LED stops blinking. If you want to print the whole screen, release the button while it's blinking.</li> </ul> </li> <li>• <b>Manual print</b> <ul style="list-style-type: none"> <li>- Press this button each time you load a sheet of paper in the tray if you have selected <b>Manual Feeder</b> for Source in your printer driver.</li> </ul> </li> </ul> <div style="background-color: #e0e0e0; padding: 10px; margin-top: 10px;"> <p> <b>NOTE</b></p> <ul style="list-style-type: none"> <li>- <b>Print Screen</b> can only be used in the Windows and Macintosh operating systems.</li> <li>- You can only use this function with USB-connected machine.</li> <li>- When printing the active window/whole monitor screen using the print screen button, the machine may use more toner depending on what is being printed.</li> <li>- You can only use this function if the machine's Easy Printer Manager program is installed if you are a macintosh OS user, you need to enable <b>Screen Print Settings</b> from the Easy Printer Manager to use the Print Screen feature.</li> </ul> </div>
4	Cancel	<p>You can stop an operation at any time. You also can do the following functions.</p> <ul style="list-style-type: none"> <li>• <b>Configuration sheet</b> <ul style="list-style-type: none"> <li>• Press and hold this button for about 2 seconds until the green LED blinks slowly, and release.</li> </ul> </li> <li>• <b>Prints event log report / usage counter</b> <ul style="list-style-type: none"> <li>• Press and hold this button for about 4 seconds until the green LED blinks quickly, and release.</li> </ul> </li> <li>• <b>Prints supplies info report</b> <ul style="list-style-type: none"> <li>• Press and hold this button for about 6 seconds until the green LED on, and release.</li> </ul> </li> </ul>
5	Power/Wake Up	<p>You can turn the power off or wake the machine up from the sleep mode with this button.</p>
6	Status LED	<p>Shows the status of your machine</p>

## 4.1.2. Understanding the status LED

The color of the LED indicates the machine's current status.

### NOTE

- Some LEDs may not be available depending on model or country.
- To resolve the error, look at the error message and its instructions from the troubleshooting part.
- You also can resolve the error with the guideline from the computers's Samsung Printing Status window.

LED	Status	Description	
Status	Off	The machine is off-line or save mode.	
	Green	Blinking	<ul style="list-style-type: none"> <li>• The machine is receiving data from the computer.</li> <li>• The machine is printing data.</li> </ul>
		On	<ul style="list-style-type: none"> <li>• The machine is on-line and can be used.</li> </ul>
	Red	Blinking	The machine is on manual printing or manual duplex printing.
		On	<ul style="list-style-type: none"> <li>• The cover is opened. Close the cover.</li> <li>• There is no paper in the tray when receiving or printing data. Load paper in the tray.</li> <li>• The machine has stopped due to a major error.</li> </ul>
	Orange	Blinking	Upgrading firmware.
		On	A paper jam has occurred.
	Toner LED	Orange	Blinking
On			<ul style="list-style-type: none"> <li>• A toner cartridge has almost reached its estimated cartridge life. It is recommended to replace the toner cartridge.</li> <li>• The toner cartridge is not installed or the wrong toner cartridge is installed.</li> </ul>
Off		All toner cartridges are at normal capacity.	
WPS LED	Blue	Blinking	The machine is connecting to a wireless network.
		On	The machine is connected to a wireless network.
		Off	The machine is disconnected from a wireless network.
Power LED	Blue	On	The machine is in power save mode.
		Off	The machine is in ready mode or the machine's power is off.
Eco	Green	On	Eco mode is on.
		Off	Eco mode is off.

\* Estimated cartridge life means the expected or estimated toner cartridge life, which indicates the average capacity of print-outs and is designed pursuant to ISO/IEC 19798. The number of pages may be affected by operating environment, percentage of image area, printing interval, graphics, media and media size. Some amount of toner may remain in the cartridge even when red LED is on and the printer stops printing.

\*\* Some LEDs may not be available depending on model or country.

### 4.1.3. Clearing paper jams

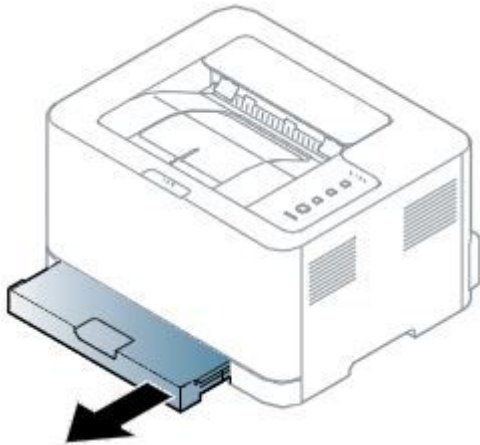
---

 **NOTE**

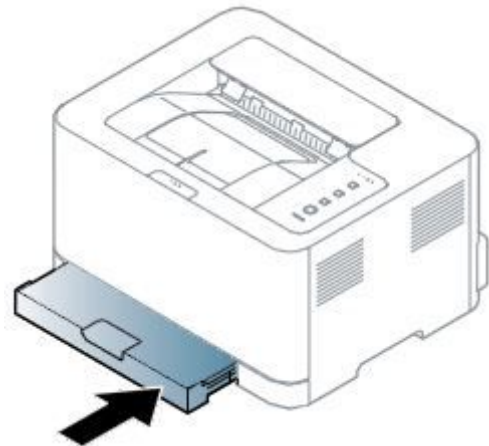
To avoid tearing the paper, pull the jammed paper out slowly and gently.

#### In tray1

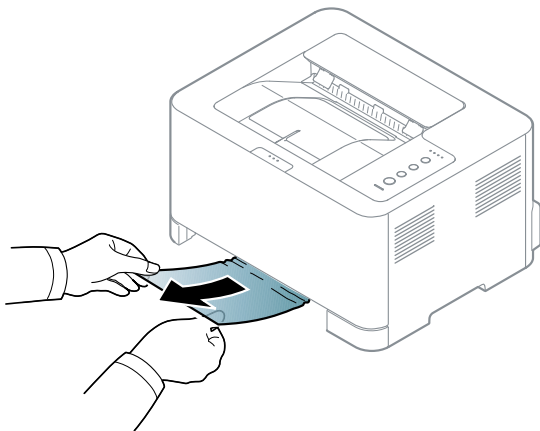
1) Take off the cassette.



3) Reinstall the cassette.



2) Remove the jammed paper by gently pulling it straight out.



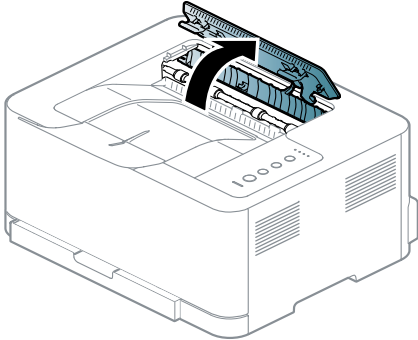
## Inside the machine



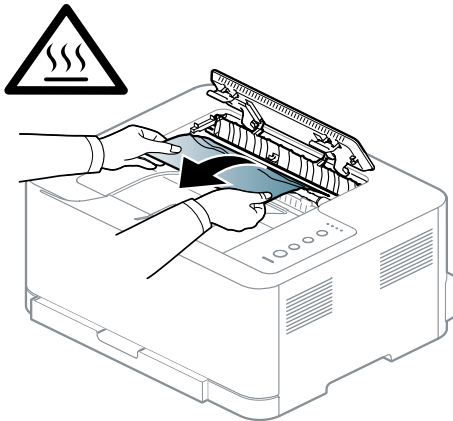
### CAUTION

The fuser area is hot. Take care when removing paper from the machine.

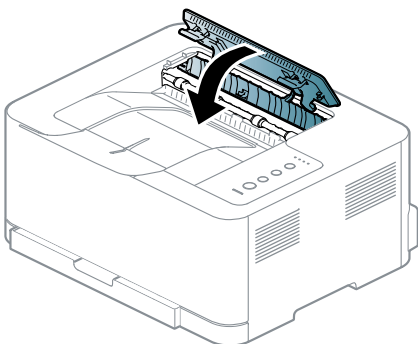
- 1) Open the exit top cover.



- 2) Remove the jammed paper by gently pulling it straight out.

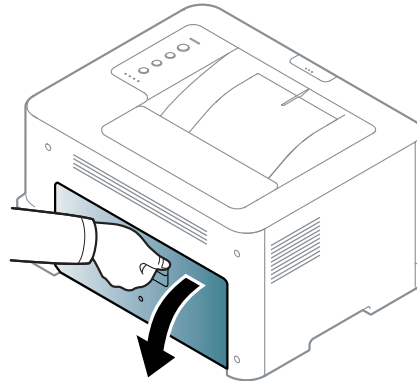


- 3) Close the exit top cover.

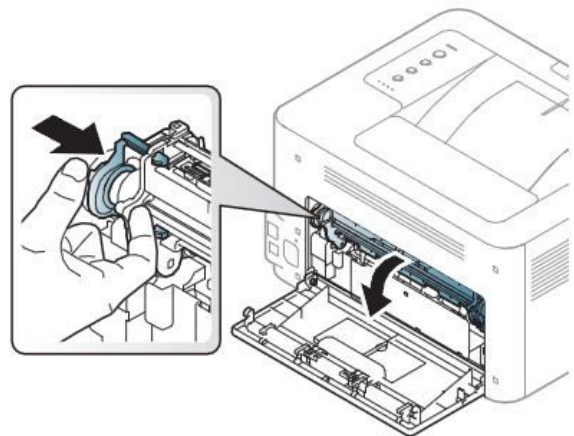


If you do not see the paper in this area, stop and go to next step:

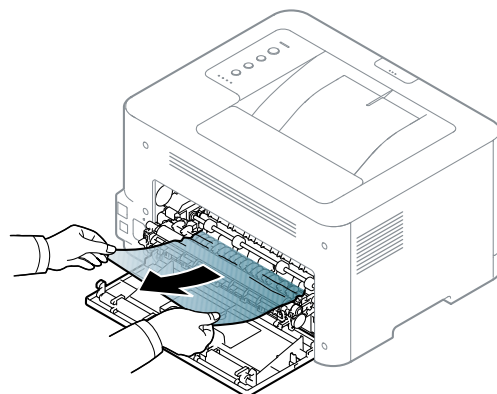
- 4) Open the rear cover door.



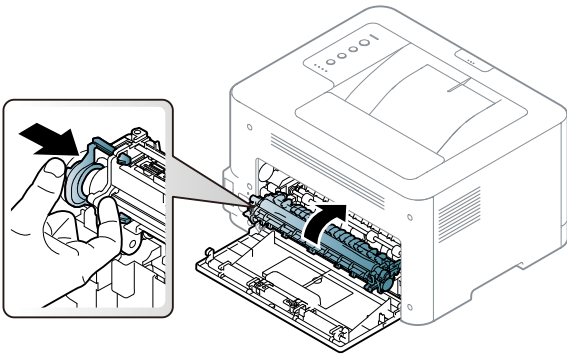
- 5) Open the FRAME-TRANSFER.



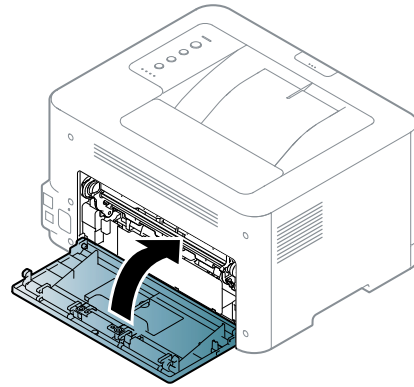
- 6) Remove the jammed paper by gently pulling it straight out.



7) Close the FRAME-TRANSFER.



8) Close the rear cover door.

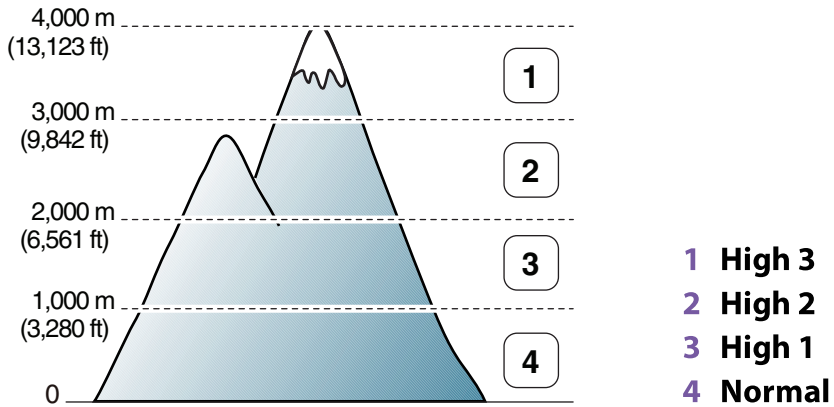


#### 4.1.4. Useful menu item for service

##### 1) Altitude adjustment

Print quality is affected by atmospheric pressure, which is determined by the height of the machine above sea level. The following information will guide you on how to set your machine for the best print quality.

Before you set the altitude value, determine the altitude where you are.



You can set the altitude value from Device Settings in Samsung Easy Printer Manager program.

- For Windows and Macintosh users, you set from **Samsung Easy Printer Manager > Switch to advanced mode > Device Settings**.

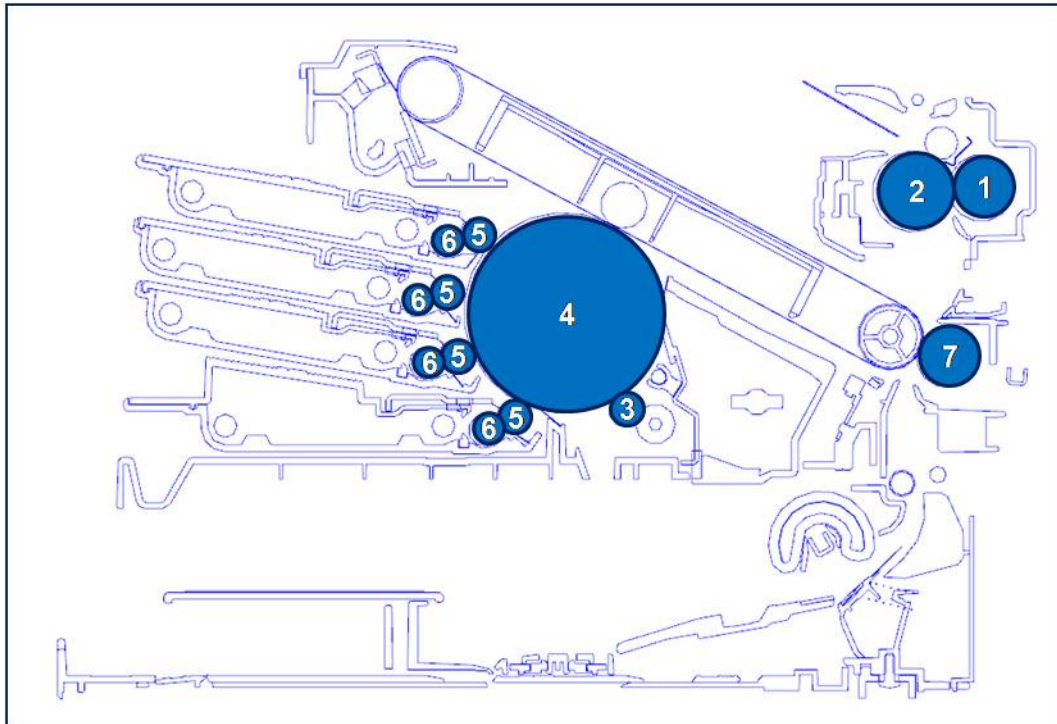


#### NOTE

- If your machine is connected to the network, you can set the altitude via SyncThru™ Web Service.

### 4.1.5. Periodic Defective Image

If an image defects appears at regular intervals on the printed-paper, it is due to a faulty or damaged roller. Refer to the table below and check the condition of the appropriate roller.



	<b>Roller</b>	<b>Period (mm)</b>	<b>Phenomenon</b>	<b>Defective part</b>
1	Pressure Roller	50.3mm	Background	Fuser Unit
2	Heat Roller	86.4mm	Black spot and image ghost	
3	Charging Roller	37.7mm	Black Spot and line and periodic band	Toner Cartridge
4	OPC Drum	188.5mm	White and Black Spots	
5	Developing Roller	26.0mm	White spot, Horizontal black band	
6	Supply Roller	47.5mm	Periodic Band by little difference of density	Transfer roller
7	Transfer Roller	54.64mm	Ghost, Damaged image by abnormal transfer	



## 4.1.6. Useful management tools

### 4.1.6.1. Using Samsung Easy Printer Manager (Windows and Macintosh only)

#### NOTE

- This feature may not be available depending on model or optional goods.
- Available for Windows or Macintosh OS users only.
- For Windows, Internet Explorer 6.0 or higher is the minimum requirement for Samsung Easy Printer Manager.

Samsung Easy Printer Manager is an application that combines Samsung machine settings into one location. Samsung Easy Printer Manager combines device settings as well as printing environments, settings/actions and launching. All of these features provide a gateway to conveniently use your Samsung machine. Samsung Easy Printer Manager provides two different user interfaces for the user to choose from: the basic user interface and the advanced user interface. Switching between the two interfaces is easy: just click a button.

### Understanding Samsung Easy Printer Manager

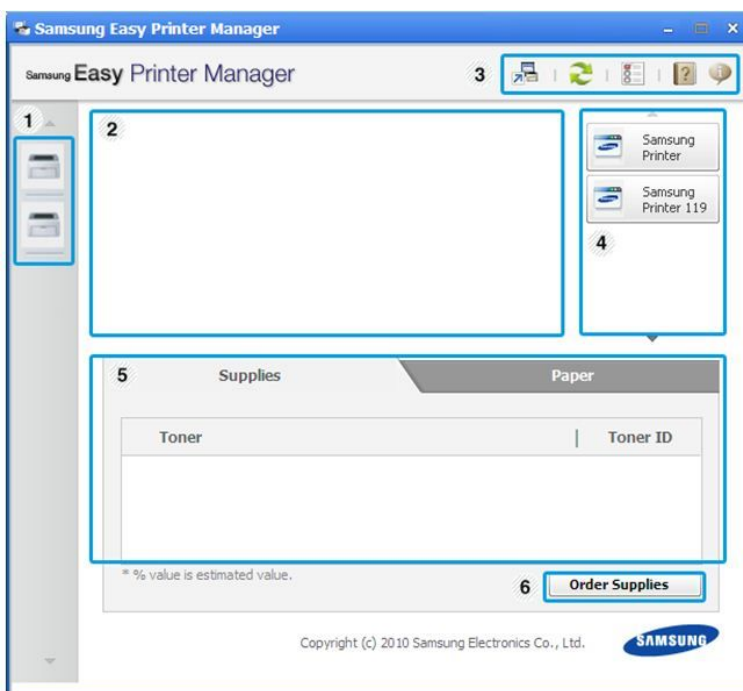
To open the program:


- For Windows, Select Start > Programs or All Programs > Samsung Printers > Samsung Easy Printer Manager > Samsung Easy Printer Manager.
- For Macintosh, Open the Applications folder > Samsung folder > Samsung Easy Printer Manager.

The Samsung Easy Printer Manager interface is comprised of various basic sections as described in the table that follows:

#### NOTE

The screenshot may differ depending on operating system you are using.



No	Area	Description
1	Printer List	The printer list displays the installed printer icons on your computer.
2	Printer Information	<p>This area gives you general information about your machine. You can check information, such as the machine's model name, IP address (or Port name), and machine status.</p> <div style="background-color: #e0e0e0; padding: 5px;"> <p> <b>NOTE</b></p> <p>Troubleshooting button: This button opens Troubleshooting Guide when an error occurs. You can directly open the necessary section in the user's guide.</p> </div>
3	Application Information	Includes links for changing to the advanced settings, preference, help, and about.
4	Quick links	Displays Quick links to machine specific functions. This section also includes links to applications in the advanced settings.
5	Contents Area	Displays information about the selected machine, remaining toner level, and paper. The information will vary based on the machine selected. Some machines do not have this feature.
6	Order Supplies	Click on the Order button from the supply ordering window. You can order replacement toner cartridge(s) from online.

### Advanced settings user interface overview

The advanced user interface is intended to be used by the person responsible for managing the network and machines.

- **Device Settings**

You can configure various machine settings such as machine setup, paper, layout, emulation, network, and print information.

- **Alert Settings**

This is menu includes settings related to error alerting.

- **Printer Alert** : Provides settings related to when alerts will be received.
- **Email Alert** : Provides options relating to receiving alerts via email.
- **History Alert** : Provides a history of device and toner related alerts.

- **Job Accounting**

Provides querying of quota information of the specified job accounting user. This quota information can be created and applied to devices by job accounting software such as SyncThru™ or CounThru™ admin software.

### 4.1.6.2. Using Samsung Printer Status (Windows only)

The Samsung Printer Status is a program that monitors and informs you of the machine status.

#### NOTE




- The Samsung Printer Status window and its contents shown in this user's guide may differ depending on the machine or operating system in use.
- Check the operating system(s) that are compatible with your machine.

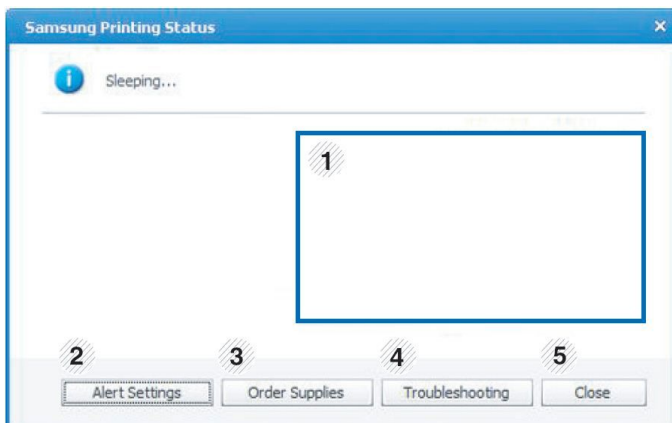
### Samsung Printer Status overview

If an error occurs while operating, you can check the error from the Samsung Printer Status. Samsung Printer Status is installed automatically when you install the machine software.

You can also launch Samsung Printer Status manually. Go to the **Printing Preferences**, click the **Basic** tab > **Printer Status** button.

These icons appear on the Windows task bar:

Icon	Mean	Description
	Normal	The machine is in ready mode and experiencing no errors or warnings.
	Warning	The machine is in a state where a soft error has occurred. For example, a toner low status, which may lead to toner empty status.
	Error	The machine has at least one hard error, such as out of paper, fuser error, etc. Machine does not have ability to come to ready without customer intervention.



1	Toner Level	You can view the level of toner remaining in each toner cartridge. The machine and the number of toner cartridge(s) shown in the above window may differ depending on the machine in use. Some machines do not have this feature.
2	Alert Settings	Select the settings you want from the options window.
3	Order Supplies	You can order replacement toner cartridge(s) from online.
4	Troubleshooting	You can directly open the troubleshooting section in the user's guide.
5	Close	Close the window.

### 4.1.6.3. Using SyncThru Web Service (SWS)

SWS is an embedded web server in the machine. This web server informs you of machine configuration, version, status and allows you to customize the machine’s settings. You can contact this server via wired and wireless network using your web browser in the remote place.

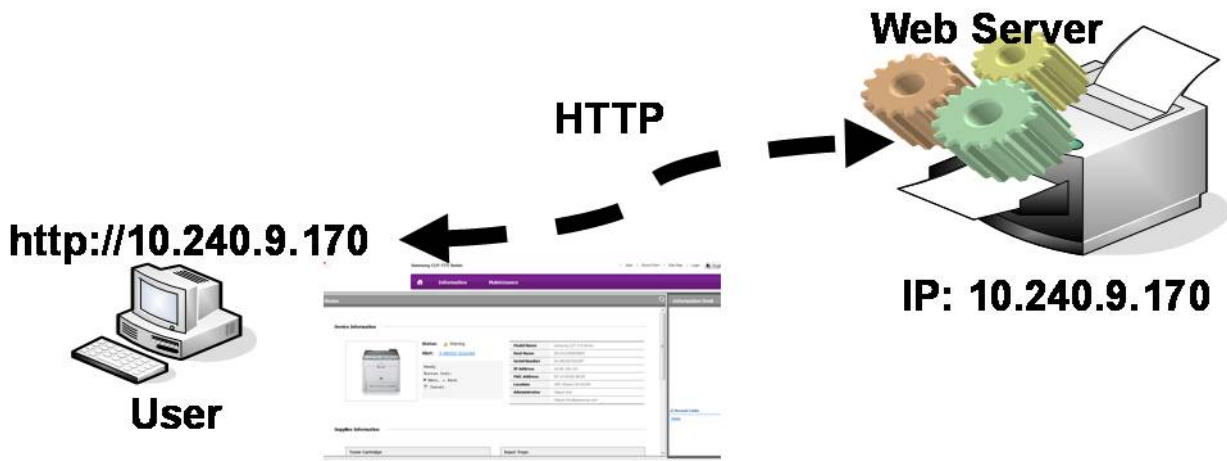
#### Connecting preparations

- Wired or Wireless Network connection is established.
- Browser (Ex> Internet Explorer) Program on your PC network connected

#### SWS overview


SyncThru Web Service (SWS)

- accepts HTTP request via port 80 as normal web servers.
- provides interface to users information of networked printers and allow to configure the setting of printers.
- is able to provide more complicated options than Local UI for printer configuration.



#### Connection Procedure

- 1) Open the Web-browser and input IP address of machine. Click “Login”.
- 2) Log-in Admin Mode. (ID: admin, PW: sec00000)
- 3) Select pages to check the configuration and customize the settings.

 **CAUTION**

Please, change SWS Default ID and Password for system security in case of your first connection.

---

## 4.1.7. Updating Firmware

---

This chapter includes instructions for updating the printer firmware. You can update the printer firmware by using one of the following methods :

- Update the firmware by using the USB port.
- Update the firmware by using the Network.

### 4.1.7.1. Update the firmware by using the USB port

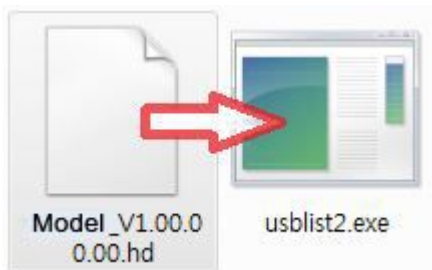
---

#### Upgrading preparations

- usblast2.exe : Tool which sends firmware data to printer.
- Firmware file to update.

#### Upgrade Procedure

- 1) Turn the machine off.
- 2) Connect USB cable to printer.
- 3) Turn the machine on. Check if the printer is the ready status.
- 4) Drag the firmware file and Drop down on the usblast2.exe.



And then firmware update will be started automatically.

- 5) When upgrading is completed, machine is automatically re-booting.

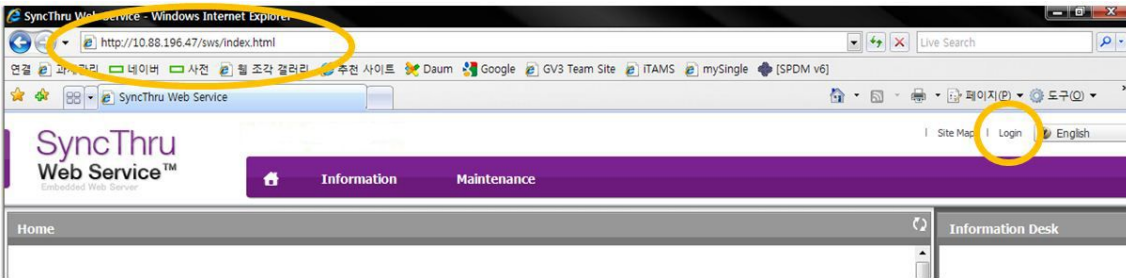
### 4.1.7.2. Update the firmware by using the network (CLP-36xW only)

#### Upgrading preparations

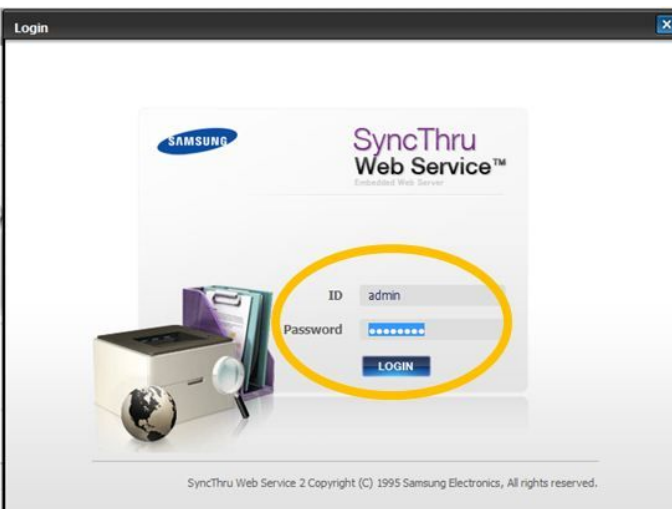
- Wired or Wireless Network connection is established.
- Firmware file to update

#### Upgrade Procedure

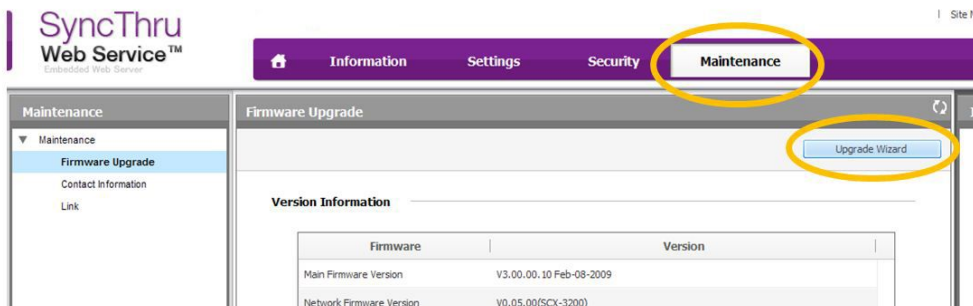
1) Open the Web-browser and input IP address of machine. Click “Login”.



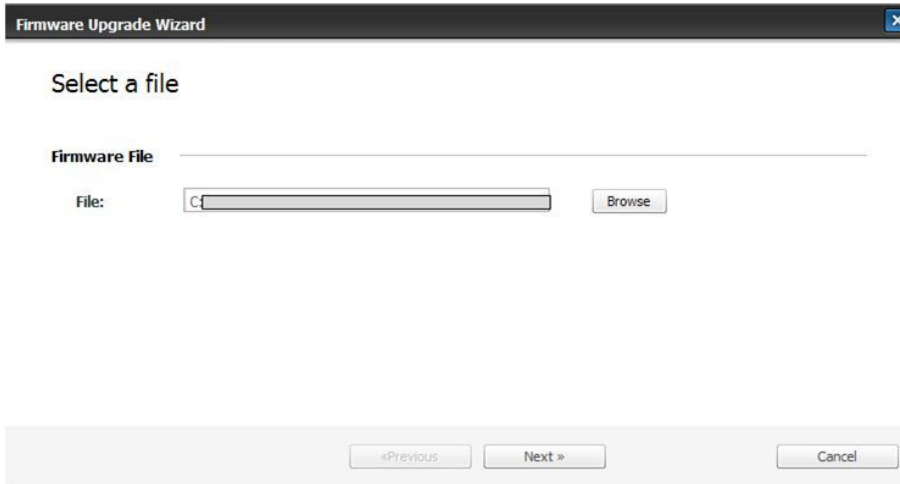
2) Log-in Admin Mode. (ID: admin, PW: sec00000)



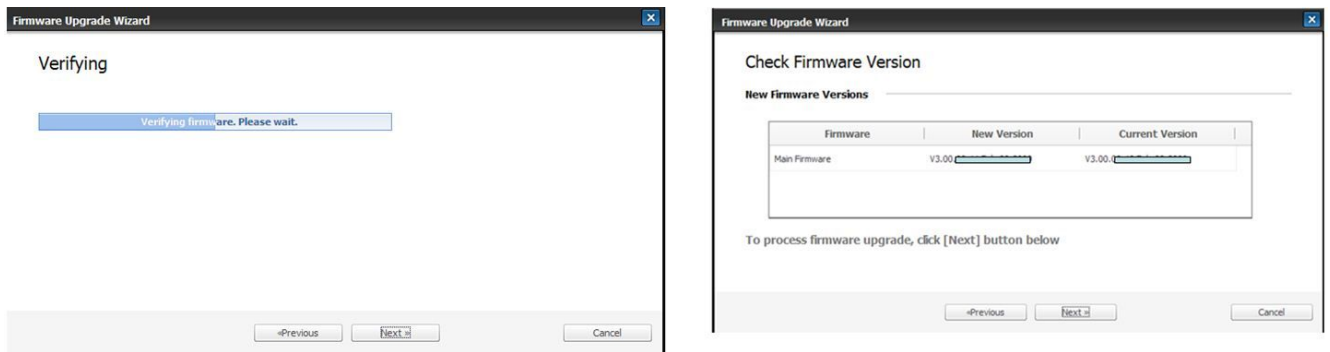
3) Select Maintenance menu and click “upgrade wizard”



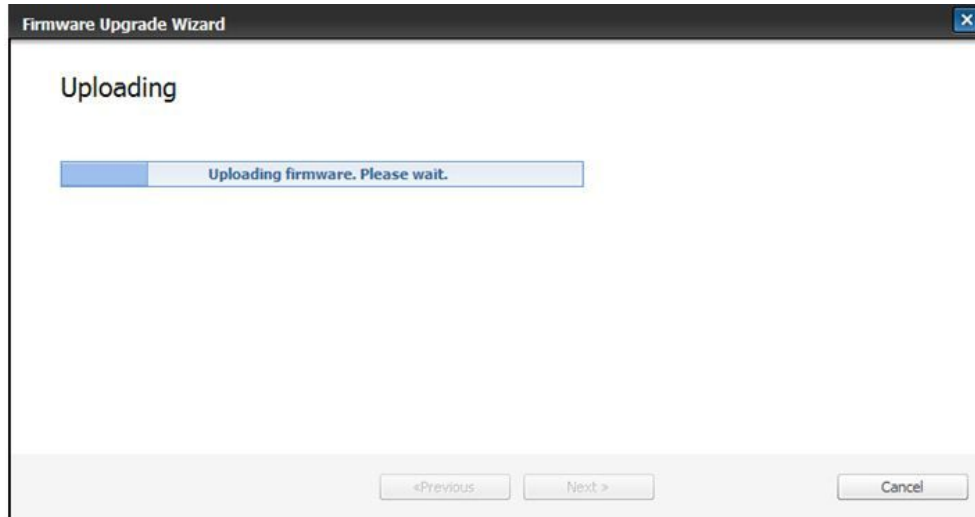
- 4) Select firmware file using “browser” button and press next button.



- 5) SyncThru will check verify firmware file and compare version and press next button.



- 6) Machine starts upgrading. SyncThru will return home page after upgrading is completed.



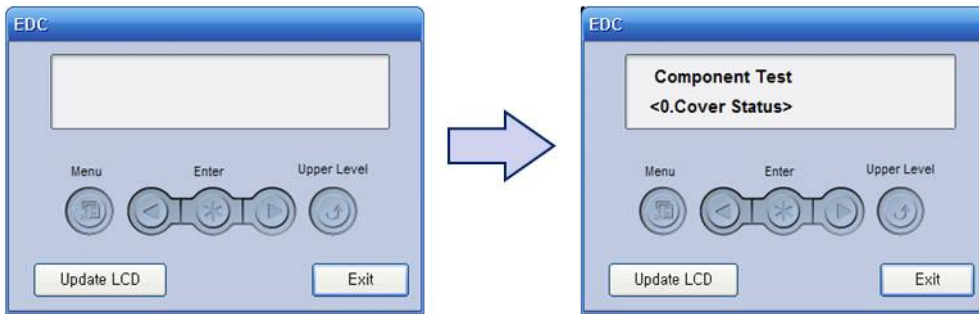


### 4.1.8. EDC program

The EDC program can check the machine status and perform various test to isolate the cause of a malfunction.

#### 1) How to use the EDC program

- 1) Download the EDC program in your PC.
- 2) Connect the printer to the computer using USB cable.
- 3) Turn on the printer and wait for the printer to finish initializing.
- 4) Start EDC program. Press the “Menu” Button



- 5) To exit the EDC Mode, press the “Exit” button.

#### EDC mode menu (Engine Diagnostic Test)

Code-Sec	Displayed Name	Meaning
100-0000	Main BLDC Motor	Main BLDC Motor is On/Off
100-0001	Main BLDC Motor Slow	Main BLDC Motor Slow(50% speed) On/Off
100-0010	Main BLDC Motor Ready	Detect if Main BLDC Motor runs at normal speed
100-0241	Waste Toner Led	Waste Toner Led On/Off
100-0250	Waste Toner Full Sensor	Detect if the waste toner is full or not. Display Waste Tank Full adc
101-0010	T1 Pick-Up Clutch	Engages drive to pick up a paper from tray1.
101-0050	Registration Clutch	Engages drive to registartion rolls.
101-0201	Dev Cam Clutch	Rotate Deve cam
101-0202	Dev Relay1	Turn on the deve relay1
101-0203	Dev Relay2	Turn on the deve relay2
101-0204	Dev Relay3	Turn on the deve relay3
101-0205	Dev Relay4	Turn on the deve relay4
101-0210	ITB Clutch	Engages drive to ITB Cleaning Blade
101-0231	T2 Nip Release	T2 Nip Release
101-0260	Cover Open Sensor	Check if the set main cover is open or not
102-0010	T1 Paper Empty Sensor	Detect when paper is in Tray1.
102-0360	Regi. Sensor	Detect when a paper is at Regi. sensor.
102-0370	Exit Sensor	Detect when a paper is at Exit. sensor.
105-0032	MHV Bias	MHV bias voltage on at normal drive level
106-0037	Dev Bias	Dev bias voltage on at normal drive level
106-0038	Dev AC Bias	Dev bias AC voltage on at normal drive level

Code-Sec	Displayed Name	Meaning
107-0032	THV Bias	THV plus bias voltage on at normal drive level
107-0033	THV(-) Bias	THV minus bias voltage on at normal drive level
107-0080	iTHV(+) Bias	iTHV plus bias voltage on at normal drive level
107-0160	Erase Lamp1	Erase Lamp 1
109-0000	Fuser Temperature A	Detects what the temperature A is on fuser.
110-0000	LSU Motor1 Run Ready	Detects if LSU motor1 runs at normal speed.
110-0060	LSU Motor1 Run	LSU Motor1 On/Off
110-0111	LSU LD Power	LSU LD Power On/Off with normal LD Power
111-0080	ID Sensor	Start ID sensor sensing On/Off
111-0090	ID Sensor Check	Display ID sensor reading value

**NOTE**

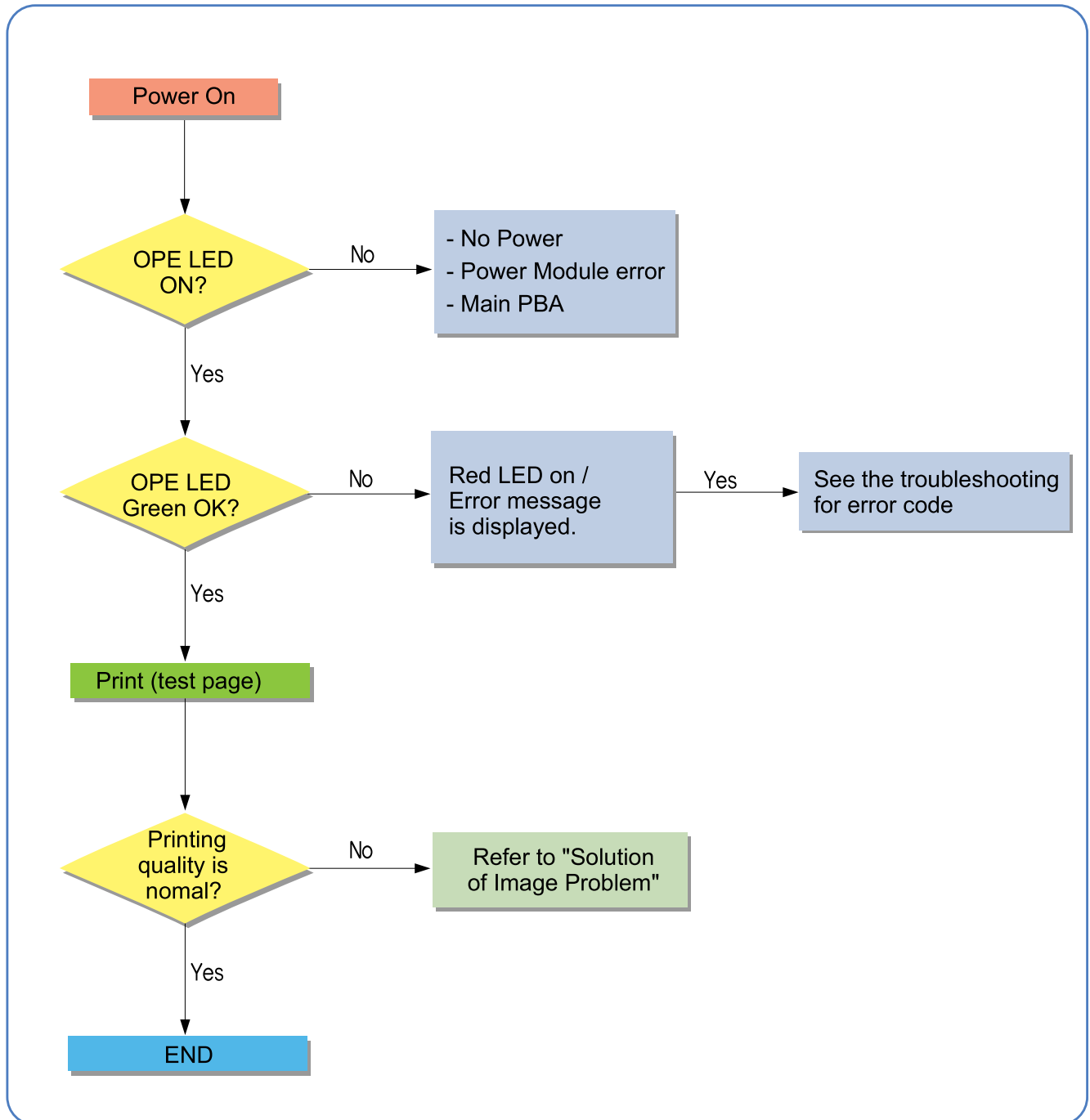
## Acronyms and Abbreviations

- DEV Bias- Developing High Voltage Bias
- EDC - Embedded Diagnostic Control
- LD – Laser Diode
- LSU – Laser Scanning Unit
- MHV - Main High Voltage (Charge Voltage)
- THV - Transfer High Voltage

## 4.2. Troubleshooting

### 4.2.1. Procedure of checking the symptoms

Before attempting to repair the printer first obtain a detailed description of the problem from the customer.



---

#### 4.2.1.1. Basic Check List

---

##### 1) Check the Power.

- Check that the power switch is turned on.
- Check that the power cable is plugged into the outlet and the printer.
- Check the voltage of the power outlet.

##### 2) Check the LED of Panel.

- Is there OPE LED ON?
  - › If not check power cable, switch SMPS or Main board.
- Is the abnormal Lamp?
  - › Check the Main board and cable harness.

##### 3) Check the Paper Path

- Is there a Paper Jam?
  - › Remove any paper fragments caught in the paper path.
- Paper Jam occurs repeatedly at a specific point in the Paper Path
  - › Open the fuser cover, Jam clear.
  - › Dismantle the machine and carefully inspect the region where the jam occurs.  
(Especially, check if paper fragments are caught in the Fuser)

##### 4) Print the Information Page (Configuration).

- Try printing a test page from a computer.
  - › If there is an error check cables and driver installation.

##### 5) Check the Print Quality.

- Is there are a Print Quality Problem?
  - › Refer to image quality problem section.

##### 6) Check consumables (toner etc.).

- Using the keys print the Test Pattern.
  - › Expected life of various consumable parts, compare this with the figures printed and replace as required

## 4.2.2. Error Code and Troubleshooting

Messages appear on the control panel display to indicate the machine's status or errors. Refer to the tables below to understand the messages' and their meaning, and correct the problem, if necessary.



### NOTE

Some messages may not appear on the display depending on the options or models.

Error Code	Error Message	Troubleshooting Page
A1-1110	Error #A1-1110 Turn off then on	Page 4-21
A3-2210	Error #A3-2210 Call for service	Page 4-21
A3-3312	Error #A3-3312 Call for service	Page 4-22
A3-6110	Deve Home Sensor Error	Page 4-23
C1-2110	Prepare Toner	Page 4-24
C1-2120	Replace Toner	Page 4-24
C1-2411	Install toner	Page 4-24
C1-2512	Not compatible Yellow toner	Page 4-25
C1-2514	Not compatible Yellow toner	Page 4-25
C1-2711	Error: #C1-2711 Call for Service	Page 4-25
C1-2712	Error: #C1-2712 Call for Service	Page 4-25
C1-3110	Prepare Toner	Page 4-24
C1-3120	Replace Toner	Page 4-24
C1-3411	Install Toner	Page 4-24
C1-3512	Not compatible Magenta toner	Page 4-25
C1-3514	Not Compatible Magenta toner	Page 4-25
C1-3711	Error: #C1-3711 Call for Service	Page 4-25
C1-3712	Error: #C1-3712 Call for Service	Page 4-25
C1-4110	Prepare Toner	Page 4-24
C1-4120	Replace Toner	Page 4-24
C1-4411	Install Toner	Page 4-24
C1-4512	Not compatible Cyan toner	Page 4-25
C1-4514	Not compatible Cyan toner	Page 4-25
C1-4711	Error: #C1-4711 Call for Service	Page 4-25
C1-4712	Error: #C1-4712 Call for Service	Page 4-25
C1-5110	Prepare Toner	Page 4-24
C1-5120	Replace Toner	Page 4-24
C1-5411	Install Toner	Page 4-24
C1-5512	Not compatible Black toner	Page 4-25
C1-5514	Not compatible Black toner	Page 4-25
C1-5711	Error: #C1-5711 Call for Service	Page 4-25
C1-5712	Error: #C1-5712 Call for Service	Page 4-25
C3-6110	Prepare new Imaging unit	Page 4-26

<b>Error Code</b>	<b>Error Message</b>	<b>Troubleshooting Page</b>
C3-6120	Replace new Imaging unit	Page 4-26
C3-6410	Install Imaging unit	Page 4-26
C3-6520	Error: #C3-6520 Door open/close	Page 4-26
C5-1110	Prepare new Transfer belt	Page 4-27
C5-1120	Replace new Transfer belt	Page 4-27
C5-1710	Transfer Belt Error	Page 4-27
C5-3110	Prepare new Transfer roller	Page 4-27
C5-3120	Replace new Transfer roller	Page 4-27
C6-1110	Replace Fuser Soon	Page 4-28
C6-1120	Replace new Fuser unit	Page 4-28
C7-1131	Replace/Install Waste Toner Tank	Page 4-28
M1-1013	Paper Jam in Tray1	Page 4-29
M1-5012	Paper Empty in Tray	Page 4-30
M2-1210	Paper Jam inside machine	Page 4-29
M3-1110	Paper jam in exit area	Page 4-30
M3-2130	Output bin full Remove paper	Page 4-31
S1-5221	Wireless Network Error	Page 4-31
S2-4110	Door open Close it	Page 4-32
S2-4611	Top door Open or Exit JAM	Page 4-32
S6-3123	Network Problem:IP Conflict	Page 4-32
U1-2320	Error #U1-2320 Turn off then on	Page 4-33
U1-2330	Error #U1-2330 Turn off then on	Page 4-33
U1-2332	Error #U1-2332 Turn off then on	Page 4-33
U1-2340	Error #U1-2340 Turn off then on	Page 4-33
U2-6120	Error #U2-6120 Turn off then on	Page 4-34
U2-6140	Error #U2-6140 Turn off then on	Page 4-34

▶ **Error Code**

A1-1110

▶ **Error message**

Error #A1-1110 Turn off then on

▶ **Symptom**

The main motor does not operate.

▶ **Troubleshooting method**

- 1) Turn the machine off then on. If the error persists, turn the machine off again.
- 2) Remove the rear and right cover.
- 3) Check if the connection between main board and main motor are correct.



- 4) If the connection is OK, replace the main motor.
- 5) If the problem persists, replace the main board.

▶ **Error Code**

A3-2210

▶ **Error message**

Error #A3-2210 Call for service

▶ **Symptom**

The CTD sensor has a problem.

▶ **Troubleshooting method**

- 1) Turn the machine off then on. If the error persists, turn the machine off again.
- 2) Check the CTD sensor connector. If the connection is OK, replace the CTD sensor board.





**▶ Error Code**

A3-3312

**▶ Error message**

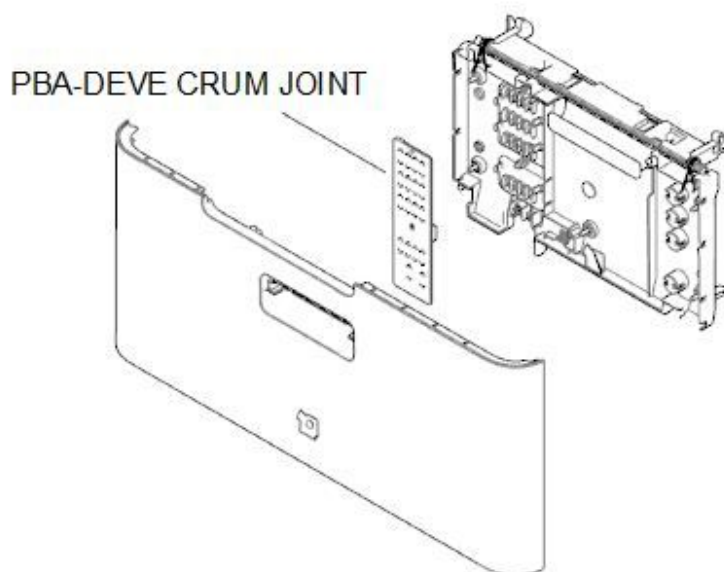
Error #A3-3312 Call for service

**▶ Symptom**

The outer temperature sensor is defective.

**▶ Troubleshooting method**

- 1) Turn the machine off then on. If the error persists, turn the machine off again.
- 2) Remove the front cover.
- 3) Disassemble the front cover and replace the PBA-DEVE CRUM JOINT that includes the outer temperature sensor.



▶ **Error Code**

A3-6110

▶ **Error message**

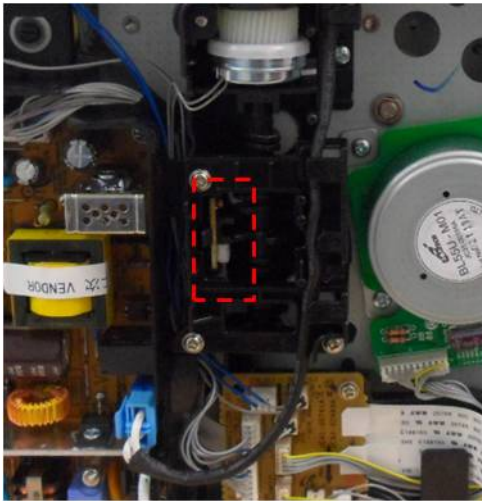
Deve Home Sensor Error

▶ **Symptom**

The deve home sensor is defective.

▶ **Troubleshooting method**

- 1) Turn the machine off then on. If the error persists, turn the machine off again.
- 2) Remove the right cover.
- 3) Check the connection between the deve home sensor and connection board.



- 4) If the connection is OK, replace the deve home sensor.

**▶ Error Code**

C1-2110

C1-3110

C1-4110

C1-5110

**▶ Error message**

Prepare Toner

**▶ Symptom**

The remaining toner cartridge is less than 10%

**▶ Troubleshooting method**

- 1) Print the supply information report. Check the life remaining of the toner cartridge.
- 2) If its life is at the end, turn the machine off and replace the toner cartridge with new one.

**▶ Error Code**

C1-2120

C1-3120

C1-4120

C1-5120

**▶ Error message**

Replace Toner

**▶ Symptom**

The toner cartridge is at the end of its life.

**▶ Troubleshooting method**

- 1) Turn the machine off and replace the toner cartridge with new one.

**▶ Error Code**

C1-2411

C1-3411

C1-4411

C1-5411

**▶ Error message**

Install toner

**▶ Symptom**

The toner cartridge is not installed or the CRUM has some problem.

**▶ Troubleshooting method**

- 1) Check if the toner cartridge is installed properly. Turn the machine off then on.
- 2) If the error message is not disappear, remove the toner cartridge. Thoroughly roll the cartridge five or six times to distribute the toner evenly inside the cartridge. And reinstall the toner cartridge.
- 3) If the problem persists, check that the CRUM contact area is contaminated. Clean it.
- 4) If the problem persists, replace the toner cartridge with new one.

▶ **Error Code**

C1-2512

C1-2514

C1-3512

C1-3514

C1-4512

C1-4514

C1-5512

C1-5514

▶ **Error message**

Not compatible Yellow toner

Not compatible Magenta toner

Not compatible Cyan toner

Not compatible Black toner

▶ **Symptom**

Toner cartridge is not compatible.

▶ **Troubleshooting method**

- 1) If the toner cartridge is not a Samsung genuine toner cartridge, replace with new one.

▶ **Error Code**

C1-2711

C1-2712

C1-3711

C1-3712

C1-4711

C1-4712

C1-5711

C1-5712

▶ **Error message**

Error: #C1-2711 Call for Service

Error: #C1-2712 Call for Service

Error: #C1-3711 Call for Service

Error: #C1-3712 Call for Service

Error: #C1-4711 Call for Service

Error: #C1-4712 Call for Service

Error: #C1-5711 Call for Service

Error: #C1-5712 Call for Service

▶ **Symptom**

CRUM chip is defective.

▶ **Troubleshooting method**

- 1) Check if the toner cartridge is installed properly. Turn the machine off then on.
- 2) If the problem persists, check that the CRUM contact area is contaminated. Clean it.

3) If the problem persists, replace the toner cartridge with new one.

▶ **Error Code**

C3-6110

C3-6130

▶ **Error message**

Prepare new Imaging unit

Replace new Imaging unit

▶ **Symptom**

The imaging unit is at the end of its life.

▶ **Troubleshooting method**

- 1) Print the supply information report. Check the life remaining of the imaging unit.
- 2) If its life is at the end, turn the machine off and replace the imaging unit with new one.

▶ **Error Code**

C3-6410

C3-6520

▶ **Error message**

Install Imaging unit

Error: #C3-6520 Door open/close

▶ **Symptom**

The imaging unit is not installed.

▶ **Troubleshooting method**

- 1) Open the front cover. Remove YMCK toner cartridges.
- 2) Check if the imaging unit is installed. Remove and reinstall it.
- 3) If the problem persists, replace the imaging unit.

▶ **Error Code**

C5-1110

C5-1120

▶ **Error message**

Prepare new transfer belt unit.

Replace new transfer belt unit.

▶ **Symptom**

The ITB Unit is at the end of its life.

▶ **Troubleshooting method**

- 1) If its life is at the end, turn the machine off and replace the ITB unit with new one.

▶ **Error Code**

C5-1710

▶ **Error message**

Transfer Belt Error

▶ **Symptom**

ITB home sensor is defective.

▶ **Troubleshooting method**

- 1) Turn the machine off then on.
- 2) If the problem persists, turn the machine off. Remove and reinstall the ITB unit.
- 3) If the problem persists, replace the ITB unit with new one.

▶ **Error Code**

C5-3110

C5-3120

▶ **Error message**

Prepare new Transfer roller

Replace new Transfer roller

▶ **Symptom**

The transfer roller is at the end of its life.

▶ **Troubleshooting method**

- 1) If its life is at the end, turn the machine off and replace the transfer roller Assy with new one.

▶ **Error Code**

C6-1110

C6-1120

▶ **Error message**

Prepare new fuser unit.

Replace with new fuser unit.

▶ **Symptom**

The fuser unit is at the end of its life.

▶ **Troubleshooting method**

- 1) Print the supply information report. Check the life remaining of the fuser unit.
- 2) If its life is at the end, turn the machine off and replace the fuser unit with new one.

▶ **Error Code**

C7-1311

▶ **Error message**

Waste toner container is not installed. Install it.

▶ **Symptom**

The waste toner container is not installed

▶ **Troubleshooting method**

- 1) Check if the waste toner container is installed properly.
- 2) Remove and reinstall the waste toner container.



▶ **Error Code**

M1-1013

M2-1210

▶ **Error message**

Paper jam in tray 1.

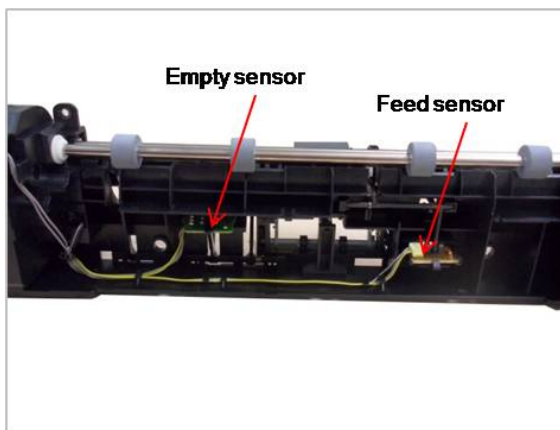
Paper Jam inside machine

▶ **Symptom**

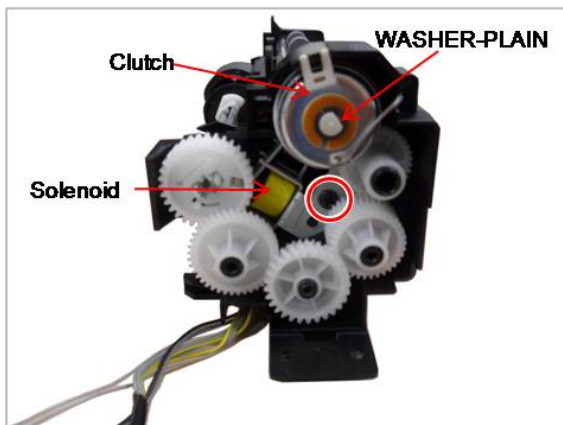
The jammed paper has occurred in the tray1 or inside the machine.

▶ **Troubleshooting method**

- 1) Remove the jammed paper.
- 2) If the jammed paper occurs continually, check the followings.
  - a) Check if the pick up roller are worn out or contaminated. Clean the contaminated part or replace it.
  - b) Check if the feed actuator or feed sensor is assembled correctly.



- 3) If the pick up solenoid is defective, replace it.



**▶ Error Code**

M1-5012

**▶ Error message**

Paper Empty in Tray

**▶ Symptom**

Paper is empty in tray.

**▶ Troubleshooting method**

- 1) Remove the cassette. Check if the paper is loaded.
- 2) If the problem persists, replace the paper empty sensor.

**▶ Error Code**

M3-1110

**▶ Error message**

Paper jam in exit area.

**▶ Symptom**

The jammed paper has occurred in the exit area.

**▶ Troubleshooting method**

- 1) Remove the jammed paper.
- 2) If the problem persists, check the following.
  - a) Check if there is any obstacles or paper on the paper path. Remove it.
  - b) Check if the fuser unit is assembled properly. If the fuser unit is defective, replace it.

▶ **Error Code**

M3-2130

▶ **Error message**

Output bin full Remove paper

▶ **Symptom**

The paper is full on the exit tray.

▶ **Troubleshooting method**

- 1) Remove the paper.
- 2) If the problem persists, remove the top cover.
- 3) Check if the bin full sensor connector is connected properly.
- 4) If the connection is OK, replace the bin full sensor.

▶ **Error Code**

S1-5221

▶ **Error message**

Wireless Network Error

▶ **Symptom**

The communication error between the main board and WLAN board has occurred.

▶ **Troubleshooting method**

- 1) Turn the machine off then on. If the problem persists, turn the machine off.
- 2) Remove the right cover. Check the connection between the main board and WLAN board.
- 3) If the connection is OK, replace the WLAN board.

**▶ Error Code**

S2-4110

**▶ Error message**

Door is open. Close it.

**▶ Symptom**

Door is opened or the cover open switch is defective.

**▶ Troubleshooting method**

- 1) Check if the front cover is closed perfectly.
- 2) If the error persists, check that the cover-open sensor is working normally. If it is defective, replace it.

**▶ Error Code**

S2-4611

**▶ Error message**

Top door Open or Exit JAM

**▶ Symptom**

Top door is opened or the paper jam has occurred in exit area.

**▶ Troubleshooting method**

- 1) Open and close the top door.
- 2) If there is a jammed paper, remove it.
- 3) Open and close the top door again.

**▶ Error Code**

S6-3123

**▶ Error message**

Network Problem:IP Conflict

**▶ Symptom**

IP address conflicts with that of other system.

**▶ Troubleshooting method**

- 1) Change the machine's IP address.
- 2) Check the setting-up for 802.1x confirmation server.

### ▶ Error Code

U1-2320

U1-2330

U1-2332

U1-2340

### ▶ Error message

Error #U1-2320 Turn off then on

Error #U1-2330 Turn off then on

Error #U1-2332 Turn off then on

Error #U1-2340 Turn off then on

### ▶ Symptom

The temperature control of fuser unit is abnormal.

### ▶ Troubleshooting method

- 1) Check if the input voltage is normal.
- 2) Turn the machine off. Remove and reinstall the fuser unit. Be careful when connecting the AC-connector and Thermistor connector.
- 3) Turn the machine on. Is the error message is disappeared?
- 4) Check the followings. If the fuser unit has any problem, replace it.
  - a) Check if the fuser connector is connected properly.



- b) Check if the halogen lamp voltage is normal.
  - c) Check if the thermistor is contaminated or twisted.
- 5) If the problem persists, replace the main board or SMPS board.

**▶ Error Code**

U2-6120

U2-6140

**▶ Error message**

Error #U2-6120 Turn off then on

Error #U2-6140 Turn off then on

**▶ Symptom**

LSU Motor does not work normally. / LSU Hsync signal is abnormal.

**▶ Troubleshooting method**

- 1) Check if the LSU harness on the main board is connected properly.
- 2) If it is OK, check that the LSU harness on LSU board is connected properly.
- 3) Check if the LSU harness is defective.
- 4) If the problem persists, replace the LSU.



- 5) If the problem persists after replacing LSU, replace the main board.

### 4.2.3. Image quality problems

1) Vertical Black Line and Band

- Description : Straight thin black vertical line occurs in the printed image.



Cause and Check Point	Solution
Check if the surface of the charge roller is scratched or contaminated.	Replace the imaging unit and test again.
Check if there are grooves on the circumference of the OPC drum.	Replace the imaging unit and test again.
Check if the cleaning blade is damaged	Replace the imaging unit and test again.
Check if paper transfer belt is damaged or contaminated.	Replace the ITB unit and test again.

2) Vertical White Line

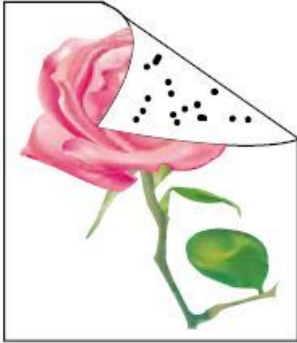
- Description : White vertical voids in the image.



Cause and Check Point	Solution
Check if the LSU window or internal lenses of LSU is contaminated.	Clean the LSU window with recommended cleaner(IPA). Clean the window with a clean cotton swab. If dirt is inside the LSU, replace the LSU.
Check if there are scratches on the circumference of the OPC drum.	Replace the imaging unit and test again.
Check if there are scratches on the circumference of the developing roller.	Replace the toner cartridge and test again.
Check if paper transfer belt is damaged or contaminated.	Replace the ITB unit and test again.

## 3) Contamination on back of page

- Description : The back of the page is contaminated.



Cause and Check Point	Solution
Dirty registration roller, pressure roller, feed roller, etc. Any dirty rollers through the path of the paper.	Identify the roller which may cause the problem by comparing the period of the contamination on images with the size of rollers. Clean any dirt from the roller or replace the dirty roller.
Check if the transfer roller is damaged or contaminated.	Replace the transfer roller and test again.
Check if paper transfer belt is damaged or contaminated.	Replace the ITB unit and test again.

## 4) Dark or Black image

- Description : The black page is printed out.

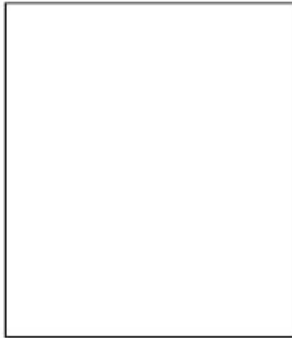


Cause and Check Point	Solution
No charging voltage in the HVPS.	Check the connecting state between the Main PBA and HVPS. Reconnect the harness.
Poor contact between toner cartridge and set contacts.	Clean the contacts as necessary. Replace any deformed or damaged contacts.
HVPS is defective.	Replace the HVPS.



5) Blank Page

- Description : Blank page is printed.



Cause and Check Point	Solution
Bad contacts from OPC drum and/or toner cartridge to ground.	Check the terminal of Ground-OPC.
Not working the LSU.	Check the connector of LSU.
Not working the developing bias voltage on HVPS.	Replace the HVPS.

6) Uneven Density

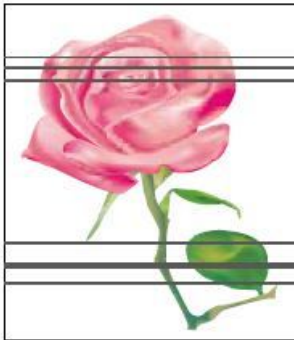
- Description : Print Density is uneven between left and right.



Cause and Check Point	Solution
The life of the Toner Cartridge has expired.	Replace the toner cartridge.
The pressure force in the left and right springs of the ITB unit is not even.	Replace the ITB Unit

## 7) Horizontal Bands

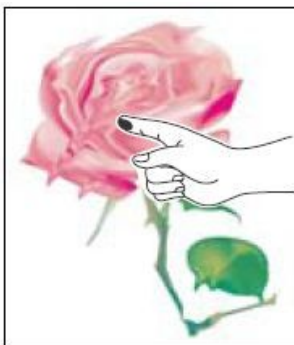
- Description : Dark or white horizontal stripes appear in the page. (These may occur at regular intervals down the page.)



Cause and Check Point	Solution
The developing roller, OPC drum or other rollers in the toner cartridge may be contaminated or deformed.	Replace the imaging unit.
Bad contacts of HV terminals of the toner cartridge with high voltage terminals from printer set.	Clean all HV terminals in the cartridge and on the set frame. Ensure all toner or paper dust, particles are removed.

## 8) Poor Fusing

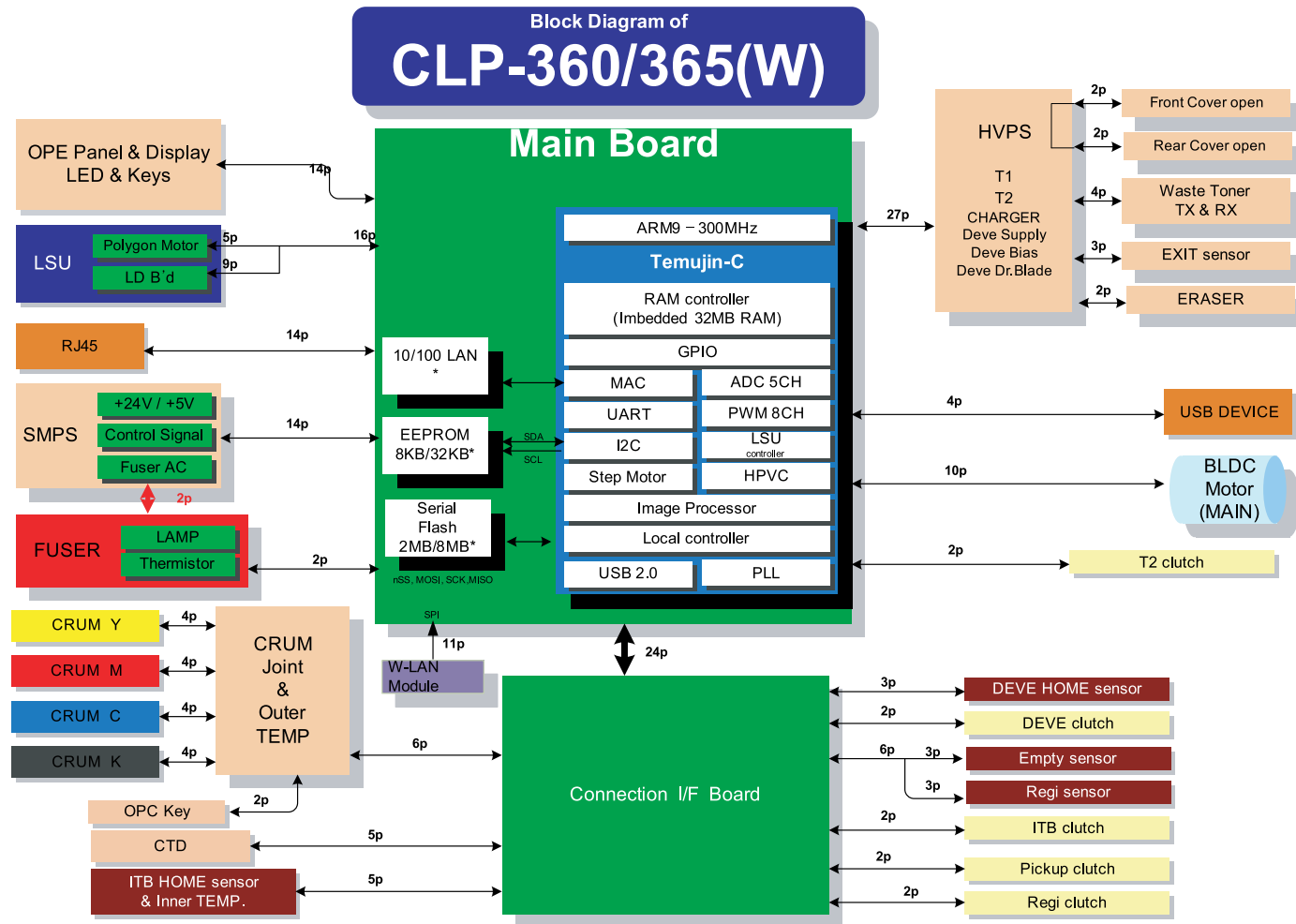
- Description : Toner is not properly fixed on paper.



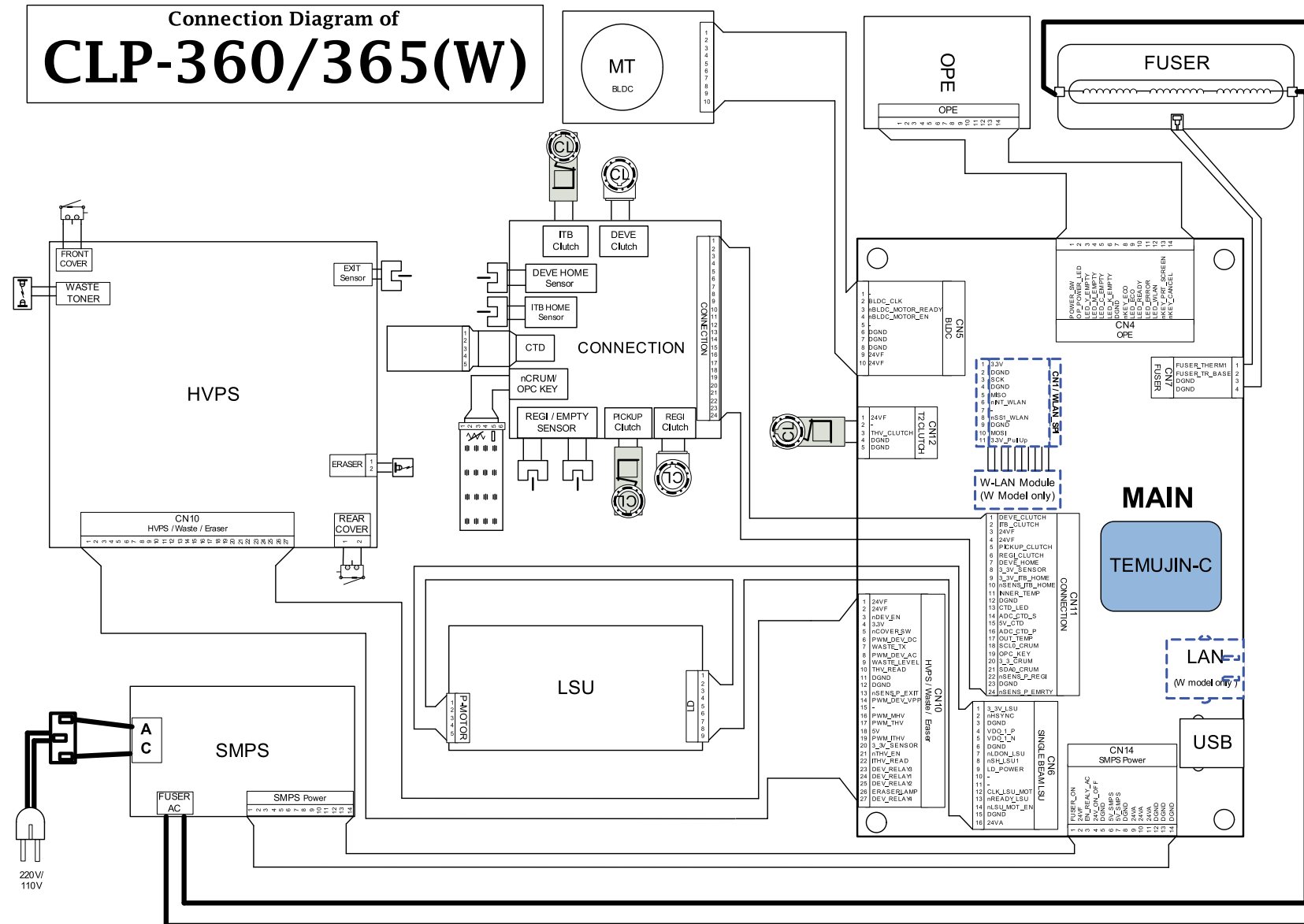
Cause and Check Point	Solution
The media doesn't meet specification	Use the proper media in specifications.
Fuser is defective	Replace the fuser unit.

# 5. System Diagram

## 5.1. Block Diagram

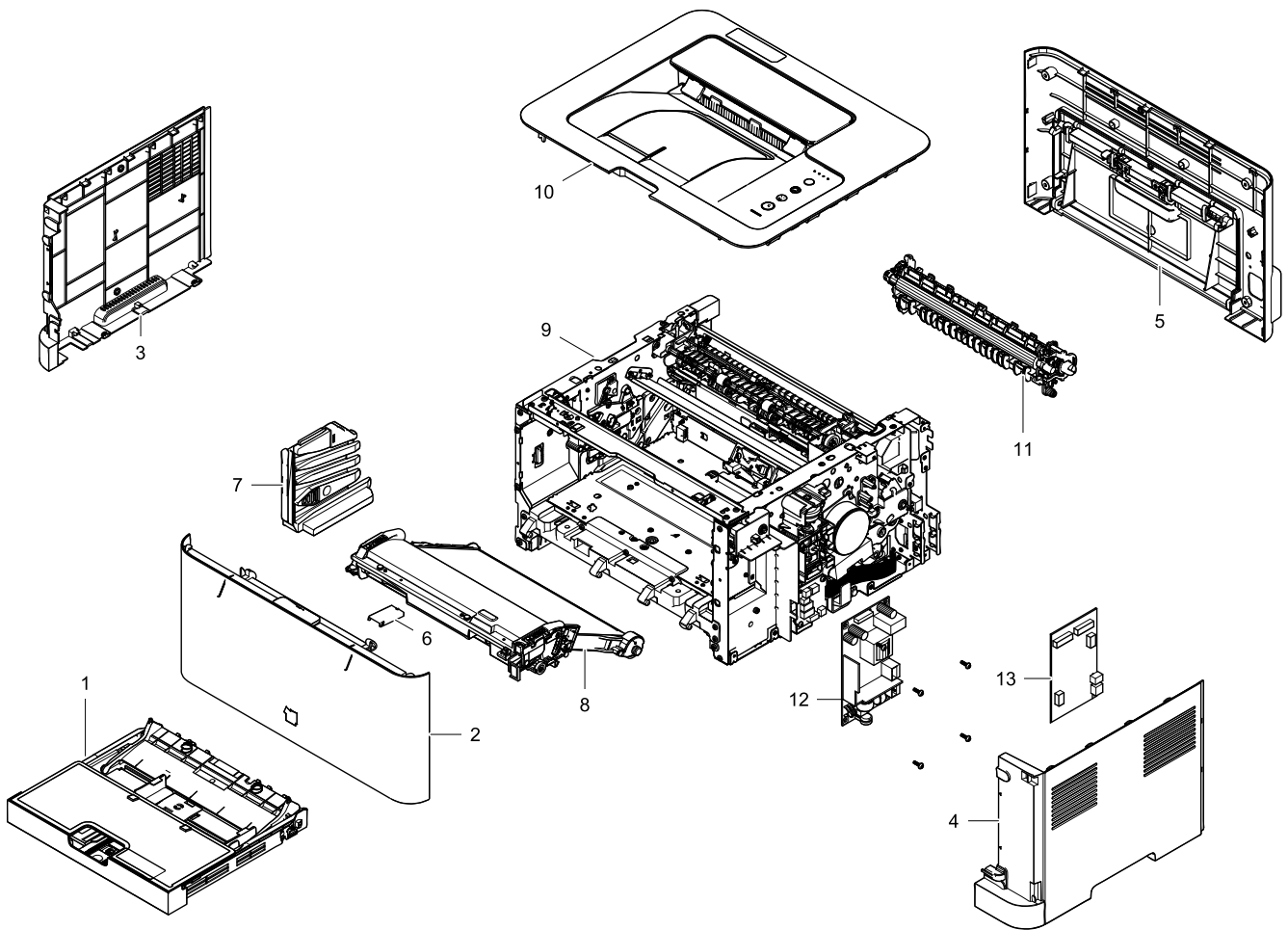


## 5.2. Connection Diagram



# 1. MAIN

## Exploded View



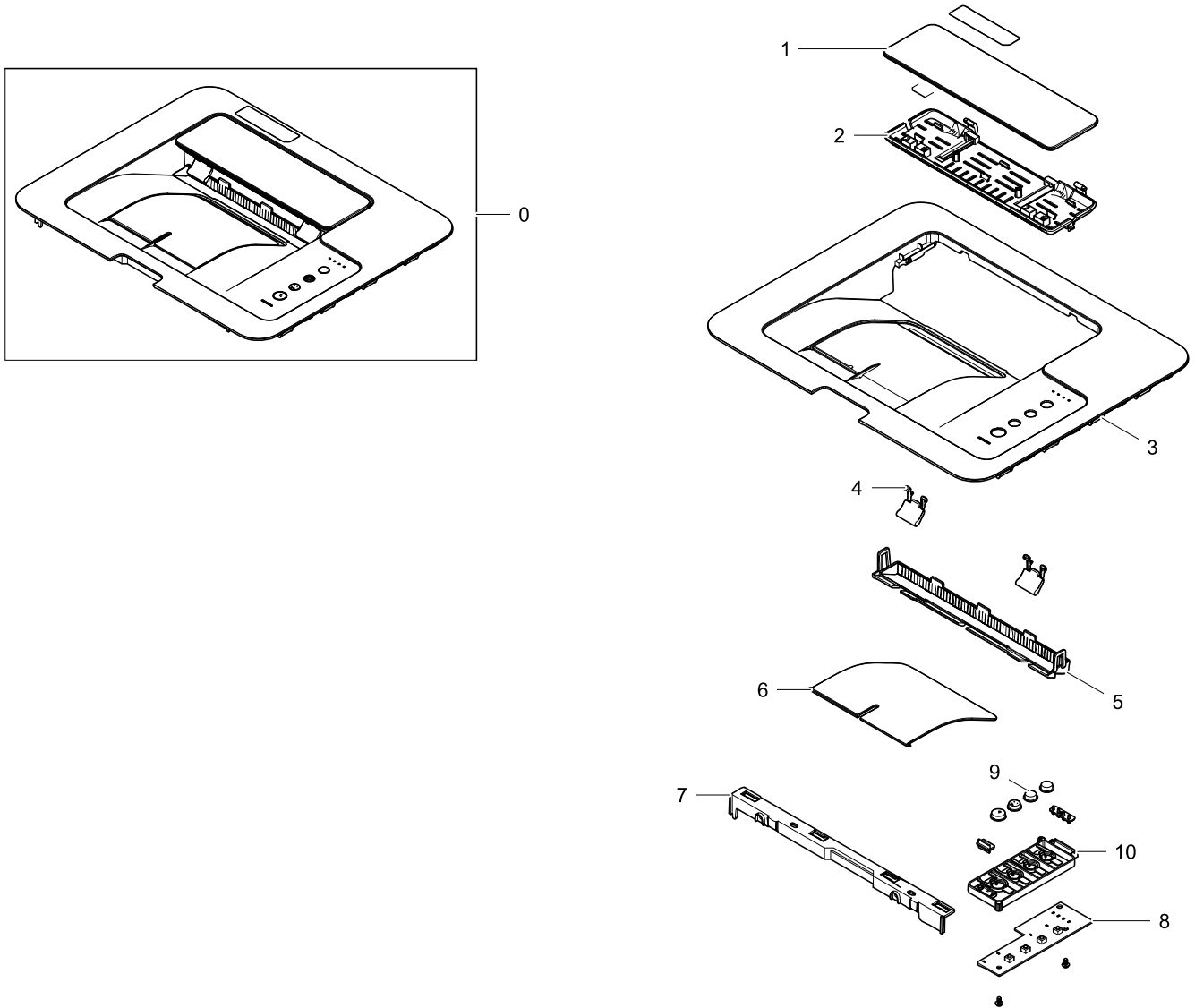
## Parts List

No.	Lvl.	Loc.	Material Code	Description & Specification	SNA	Qty.
1	1		JC90-01142A	CASSETTE; CLP-365W,SEC	SA	1
2	2		JC95-01585A	COVER-FRONT; CLP-365W,SEE	SA	1
3	2		JC63-03531A	COVER-LEFT; CLP-365W,HIPS,2.0T,266.5,209.	SA	1
4	2		JC63-03567A	COVER-RIGHT; CLP-365W,HIPS,2.0T,266.5,209	SA	1
5	2		JC95-01588A	COVER-REAR; CLP-365,SEE,SPLIT GRAY	SA	1
6	2	H4282	JC63-01574A	COVER-CABLE; CLP-310,POM,T1.5,19.7,37.3,H	SA	1
7	2		JC96-06298A	CARTRIDGE-WTB; CLP-365W,SEC	SA	1
8	1		JC96-06292B	CARTRIDGE-TRANSFER; CLP-365W,SEC	SNA	1
9	1		JC93-00728A	FRAME-MAIN; CLP-365W,SEC	SNA	1
10	1		JC95-01589B	COVER-TOP; CLP-365,SEE	SA	1
11	1		JC93-00708A	FRAME-TRANSFER; CLP-365	SA	1
12	1		JC44-00214A	SMPS-V2; CLP-365W,Carlsen,Flyback,60W,220	SA	1
13	1		JC92-02485C	PBA-MAIN; CLP-360,XEV,MAIN,71.75*120,FR4,	SA	1



## 2. COVER-TOP

### Exploded View



### Parts List

No.	Lvl.	Loc.	Material Code	Description & Specification	SNA	Qty.
0	1		JC95-01589B	COVER-TOP; CLP-365,SEE	SA	1
1	2		JC63-03533A	COVER-DUST; CLP-365W,HIPS,2.0T,229.9,70.8	SNA	1
2	2		JC63-03534A	COVER-JAM; CLP-365W,HIPS,2.0T,228.6,67.8,	SNA	1
3	2		JC63-03536B	COVER-TOP; CLP-365,HIPS,2.5T,378,305,SEE,	SNA	1
4	2		JC67-00603A	MACHINERY ETC-PMO SUB STACKER; CLP-365W,P	SNA	2
5	2		JC63-03569A	COVER-EXIT; CLP-365W,ABS+PC,2.0T,240,32.5	SNA	1
6	2		JC61-05006A	STACKER-MAIN; CLP-360,HIPS,136,118.9,HB,B	SA	1
7	2		JC63-03568A	COVER-TOP DUMMY; CLP-365W,HIPS,2.0T,287.2	SNA	1

Exploded Views and Parts List

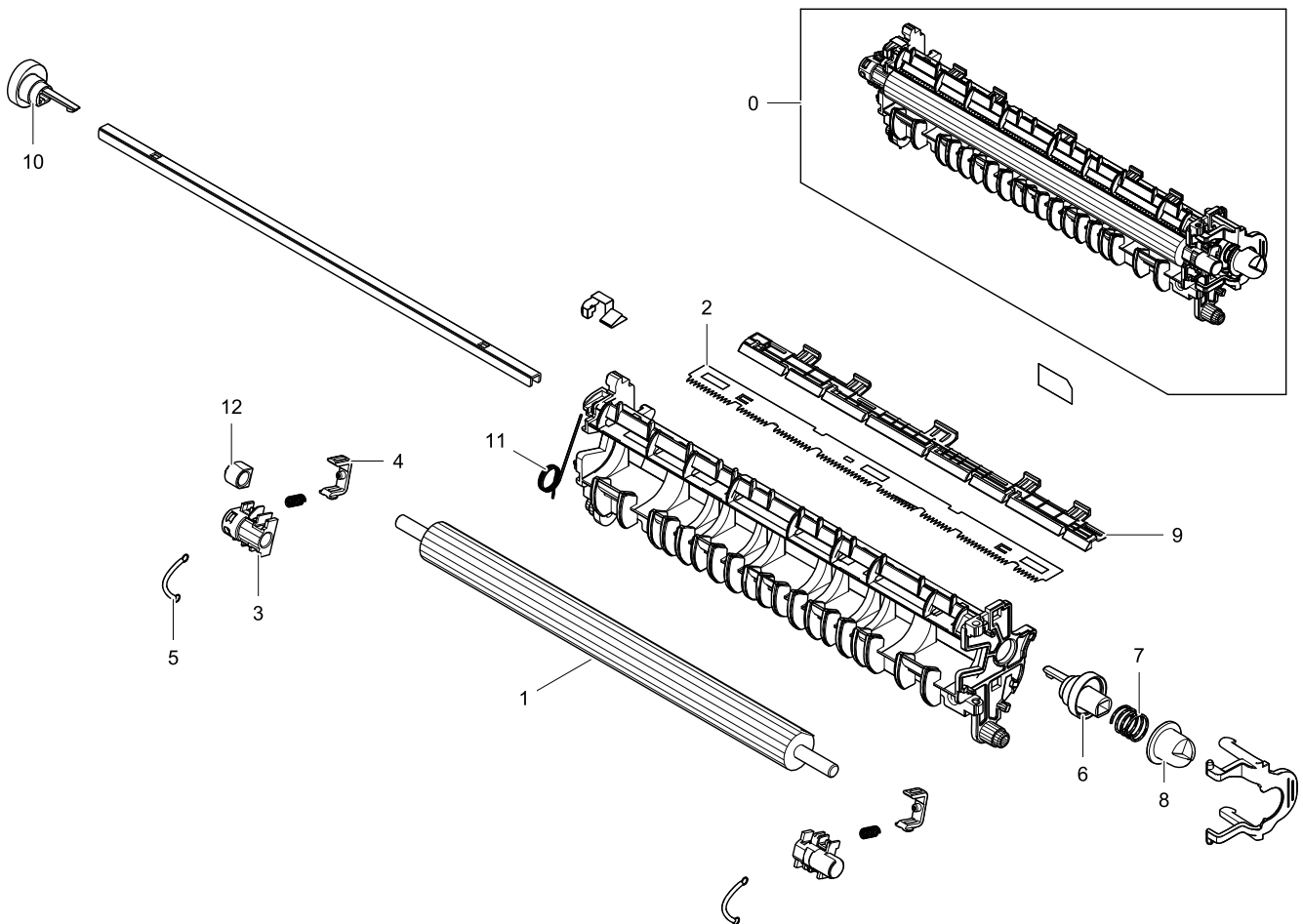
---

No.	Lvl.	Loc.	Material Code	Description & Specification	SNA	Qty.
8	2		JC92-02500A	PBA-OPE; CLP-360,SEC,44*126.8 mm,Basic,FR	SA	1
9	2		JC64-00755A	KEY-PRINT SCREEN; CLP-365W,HIPS,13.6,1.3T	SA	1
10	2		JC63-03535A	COVER-KEY-HOLDER; CLP-365W,HIPS,1.5T,115.	SNA	1



### 3. FRAME-TRANSFER

#### Exploded View



#### Parts List

No.	Lvl.	Loc.	Material Code	Description & Specification	SNA	Qty.
0	1		JC93-00708A	FRAME-TRANSFER; CLP-365	SA	1
1	2		JC66-03353A	ROLLER-TRANSFER; Calsen,18.0 (mm),NBR+ECO	SA	1
2	2	D1171	JC70-10232A	IPR-PLATE SAW; ML-80,SUS304 CSP 1/2H,T0.1	SNA	1
3	2		JC61-05658A	HOLDER-SHAFT L; CLP-365,POM,2.0,16,23,WHI	SNA	1
4	2		JC61-05655A	HOLDER-TR CAM; CLP-365,HIPS,2,11,16,BLACK	SNA	2
5	2		6107-001542	SPRING-ES; SWP,PI0.45,L34.1,ID3,OD3.9	SNA	2
6	2		JC66-03789A	CAM-TR R; CLP-365,POM,2.0,30,WHITE,HB	SNA	1
7	2		6107-003276	SPRING-CS; SWP B,0.9,12,12.1,FREE	SNA	1
8	2		JC67-00671A	COUPLER-TR; CLP-365,POM,13,WHITE	SNA	1
9	2		JC61-04156A	HOLDER-SAW PLATE; CLP-325,HIPS,1.2,9.6,21	SNA	1
10	2		JC66-03788A	CAM-TR L; CLP-365,POM,2,20,WHITE,HB	SNA	1

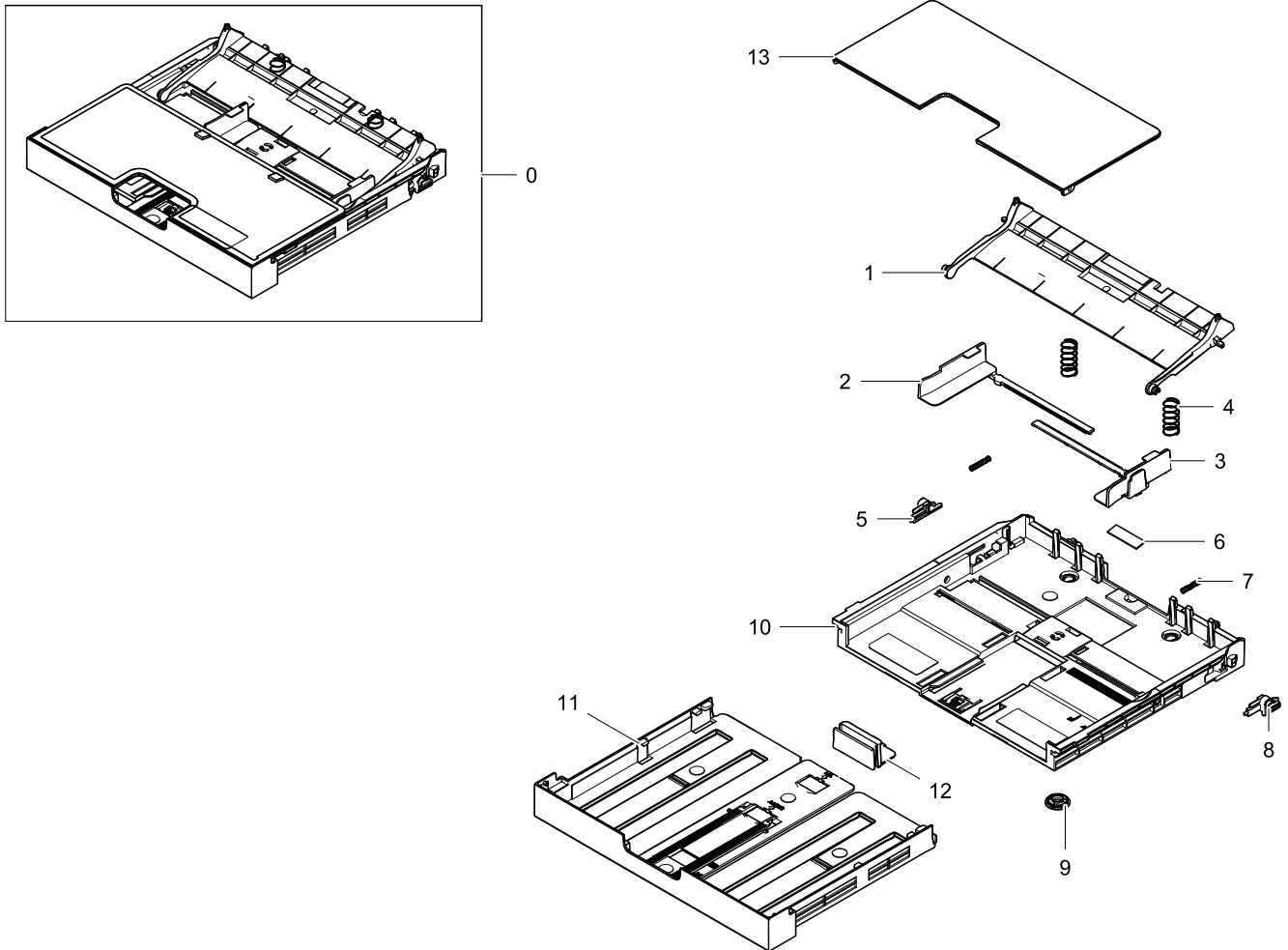
Exploded Views and Parts List

---

No.	Lvl.	Loc.	Material Code	Description & Specification	SNA	Qty.
11	2		6107-003280	SPRING-TS; SWP,ZINC WHITE,0.8,25/16,8,RIG	SNA	1
12	2		JC61-04944A	HOLDER-CHARGE; CLP-360,BRONZE-SINTERED	SNA	1

## 4. CASSETTE

### Exploded View



### Parts List

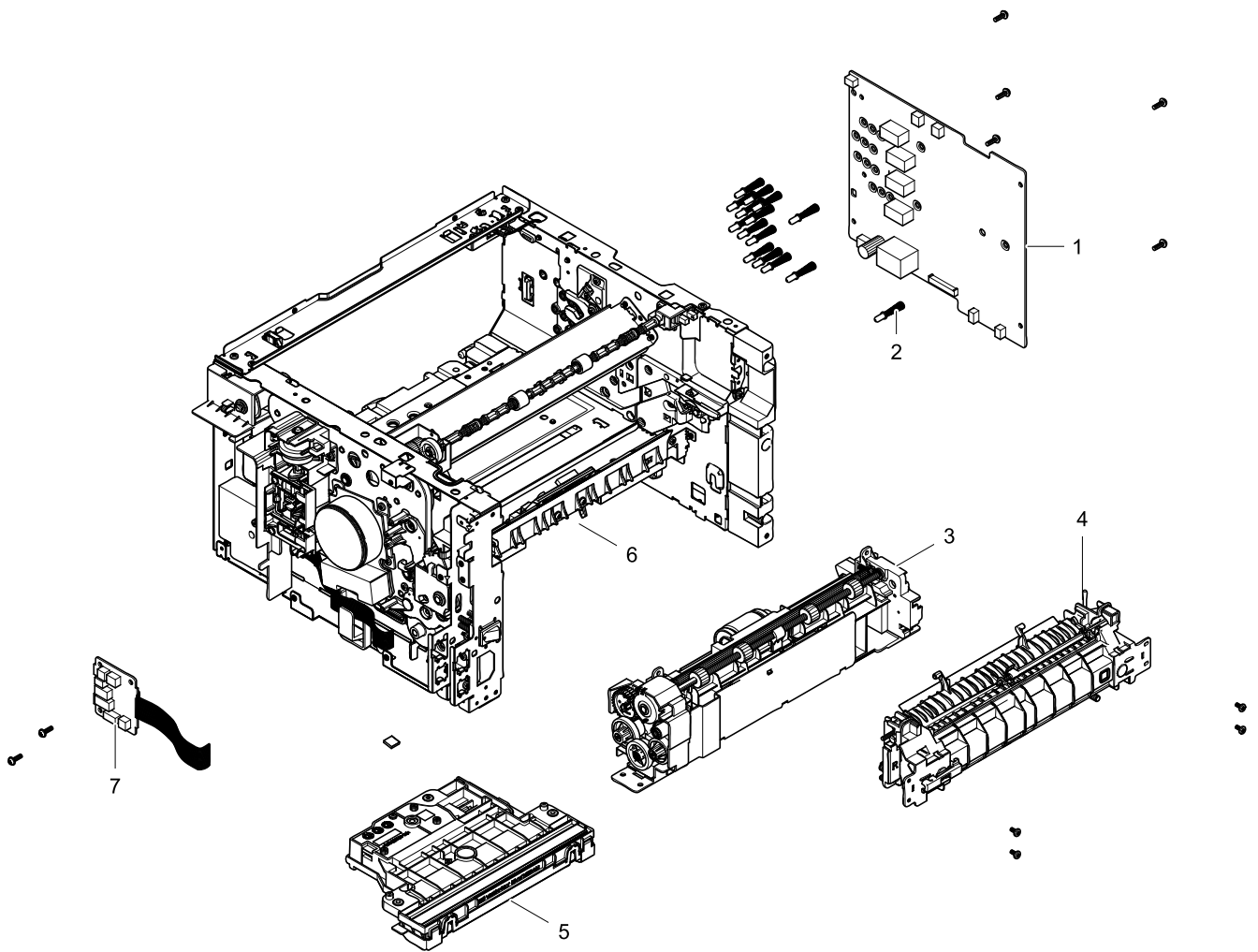
No.	Lvl.	Loc.	Material Code	Description & Specification	SNA	Qty.
0	1		JC90-01142A	CASSETTE; CLP-365W,SEC	SA	1
1	2		JC61-04940A	PLATE-KNOCKUP; CLP-360,HIPS,GRAY,GUIDE SU	SA	1
2	2		JC61-04937A	GUIDE-ADJUST CASSETTE L; CLP-360,HIPS,GRA	SNA	1
3	2		JC61-04936A	GUIDE-ADJUST CASSETTE R; CLP-360,HIPS,GRA	SNA	1
4	2	G1521	6107-001240	SPRING-CS; SUS304-WPB,GROUND END,PI0.6,D1	SA	2
5	2	B1072	JC61-02127A	GUIDE-KNOCKUP L; SCX-4500,POM,NTR,GUIDE	SA	1
6	2		JC73-00322B	RUBBER-PAD_FRICTION; ML-1660,EPDM,80,0.6~	SNA	1

## Exploded Views and Parts List

No.	Lvl.	Loc.	Material Code	Description & Specification	SNA	Qty.
7	2	G1358	JG61-70531A	SPRING ETC-LOCKER,PLATE; SF6000,SUS304WPB	SA	2
8	2	B1073	JC61-02128A	GUIDE-KNOCKUP R; SCX-4500,POM,NTR,GUIDE	SA	1
9	2		JC66-03004A	GEAR-PINION; ML-2950ND,POM,0.5,32,3.9,WHI	SNA	1
10	2		JC61-04951A	FRAME-SEMI CASSETTE; CLP-360,HIPS,GRAY,CA	SNA	1
11	2		JC61-04935A	SUPPORT-CASSETTE EXTENSION; CLP-360,HIPS,	SNA	1
12	2		JC61-04934A	STOPPER-PAPER REAR; CLP-360,HIPS,GRAY	SNA	1
13	2		JC63-03487A	COVER; CLP-360,PC,GRAY	SA	1

## 5. FRAME-MAIN

### Exploded View

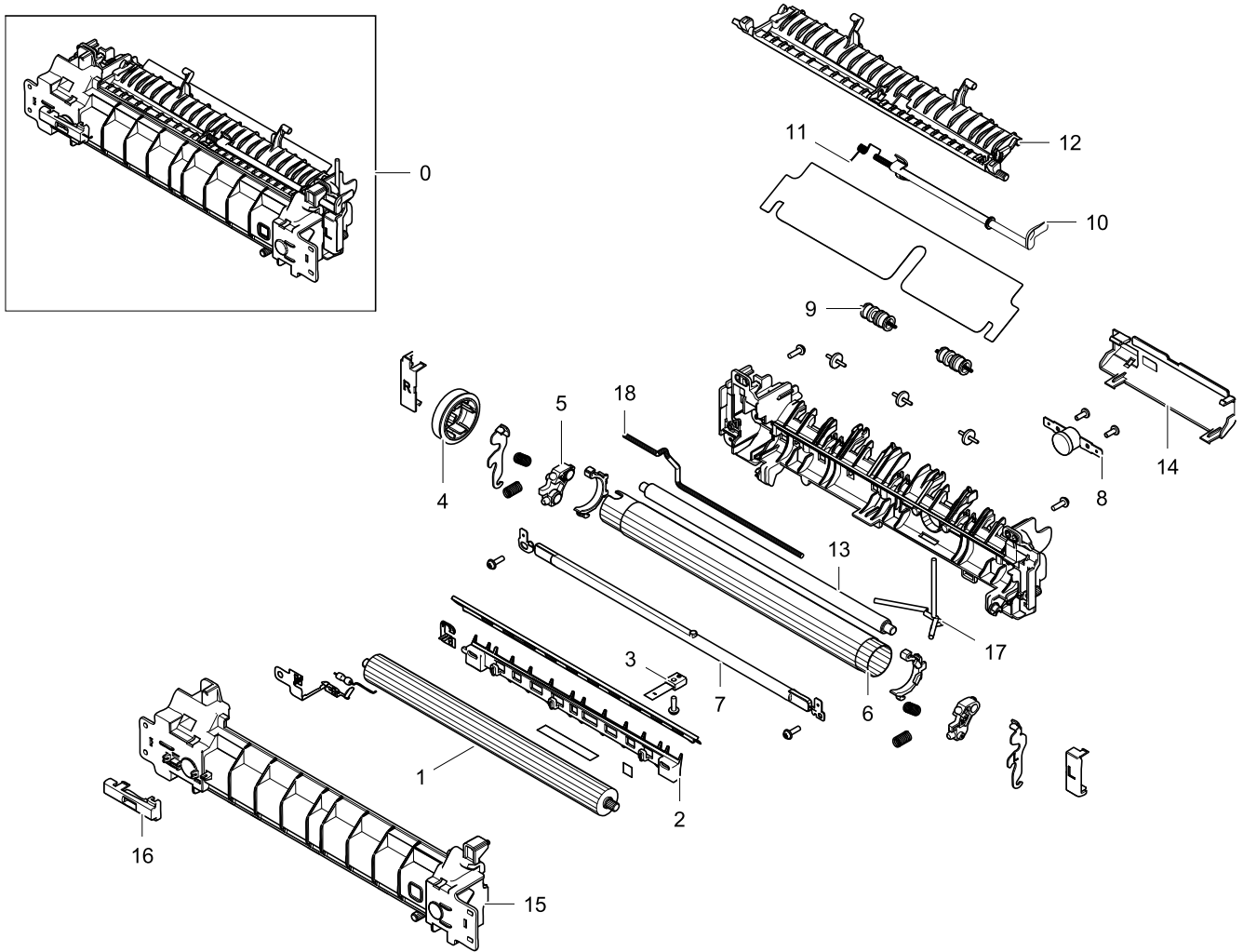


### Parts List

No.	Lvl.	Loc.	Material Code	Description & Specification	SNA	Qty.
1	2		JC44-00215A	HVPS; 24V,21.6V~27.6V,MAX 5KV,MAX-2KV,600	SA	1
2	2		JC93-00734A	FRAME-TERMINAL; CLP-365W,SEC	SNA	15
3	2		JC93-00547A	FRAME BASE-PAPER PATH; CLP-365W,SEC	SA	1
4	2		JC91-01080A	FUSER; CLP-365W,SEC,WORLD,220V	SA	1
5	3		JC97-04058A	LSU; CLP-365W,SEC,Single,A4(Ltr),600,S2,7	SA	1
6	2		JC93-00729A	FRAME; CLP-365W,SEC	SNA	1
7	2		JC92-02489A	PBA-CONNECTOR; CLP-365W,SEC,CONNECTION,45	SA	1

# 5.1. FUSER

## Exploded View



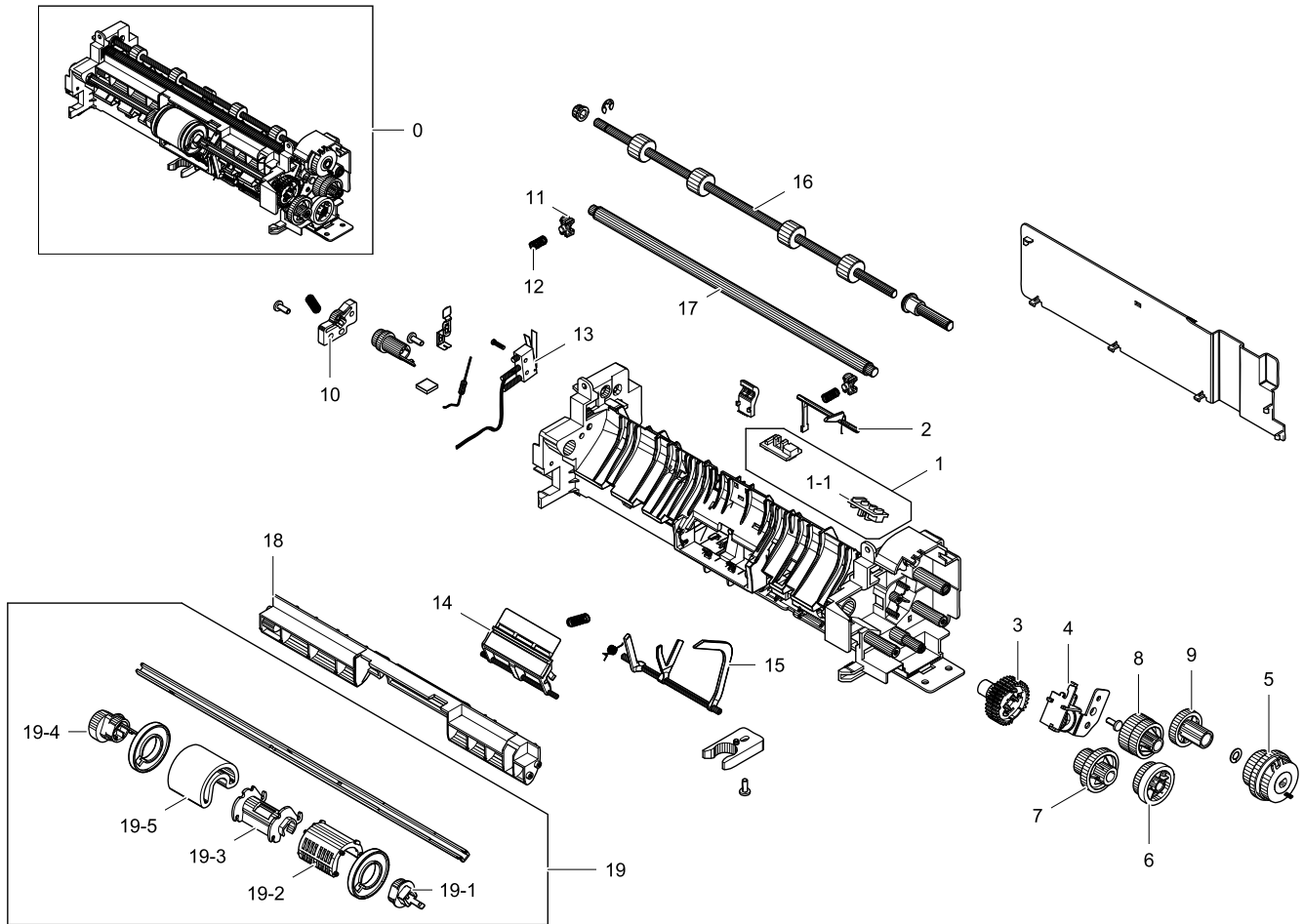
## Parts List

No.	Lvl.	Loc.	Material Code	Description & Specification	SNA	Qty.
0	2		JC91-01080A	FUSER; CLP-365W,SEC,WORLD,220V	SA	1
1	4	L9622	JC66-02716B	ROLLER-PRESSURE; ML-1660,SUM22,6,237.5,BL	SA	1
2	4		JC61-04989A	GUIDE-INPUT; CLP-365W,PET+GF,LV2550GN30,P	SNA	1
3	4		1404-001740	THERMISTOR-NTC ASSY; 7Kohm,3370K,0.3mW/C,	SNA	1
4	4		JC66-03355A	GEAR-FUSER; CLP-365W,PPS,1,34,BROWN,36,13	SNA	1
5	4		JC61-04984A	BUSH-PR R; CLP-365W,PPS,6.1,BLACK,SEC,RBA	SNA	1
6	4		JC66-03326A	ROLLER-HEAT; CLP-360,SILICON,24.3,RED,ETC	SNA	1

No.	Lvl.	Loc.	Material Code	Description & Specification	SNA	Qty.
7	4		4713-001662	LAMP-HALOGEN; 230V,850W	SNA	1
8	4		4712-001091	THERMOSTAT; AC125/250V,195+-5100	SNA	1
9	4	L7112	JC61-02423A	SPRING ETC-EXIT; CLP-310,SUS304 WPB,PI0.3	SA	2
10	4		JC66-03359A	ACTUATOR-EXIT; CLP-365W,PA,BLACK,ACTUATOR	SNA	1
11	4	L7540	6107-001507	SPRING-TS; SUS304,NATURAL,PI0.25,W5.3,ID4	SA	1
12	4		JC61-04990A	GUIDE-OUTPUT; CLP-365W,PET+GF,41.1,GF30%,	SNA	1
13	4		JC66-03871A	ROLLER-PRESSURE SHAFT; CLP-365W,SUM22,9.6	SNA	1
14	4		JC63-03522A	COVER-UPPER; CLP-365W,PC,SEC,NH-1035	SNA	1
15	4		JC61-04987A	FRAME-LOWER; CLP-365W,PET+GF,LV2550GN30,B	SNA	1
16	4		JC67-00674A	CAP-RESISTOR; CLP-365W,PC,46,14.7	SNA	1
17	4	H2699	JC39-00521A	CBF HARNESS-FUSER REC; SCX-5530FN,CBF,UL3	SA	1
18	4		JC39-01701A	HARNESS-FUSER AC; CLP-365W,UL3398,2p,BLK,	SNA	1

## 5.2. FRAME BASE-PAPER PATH

### Exploded View



### Parts List

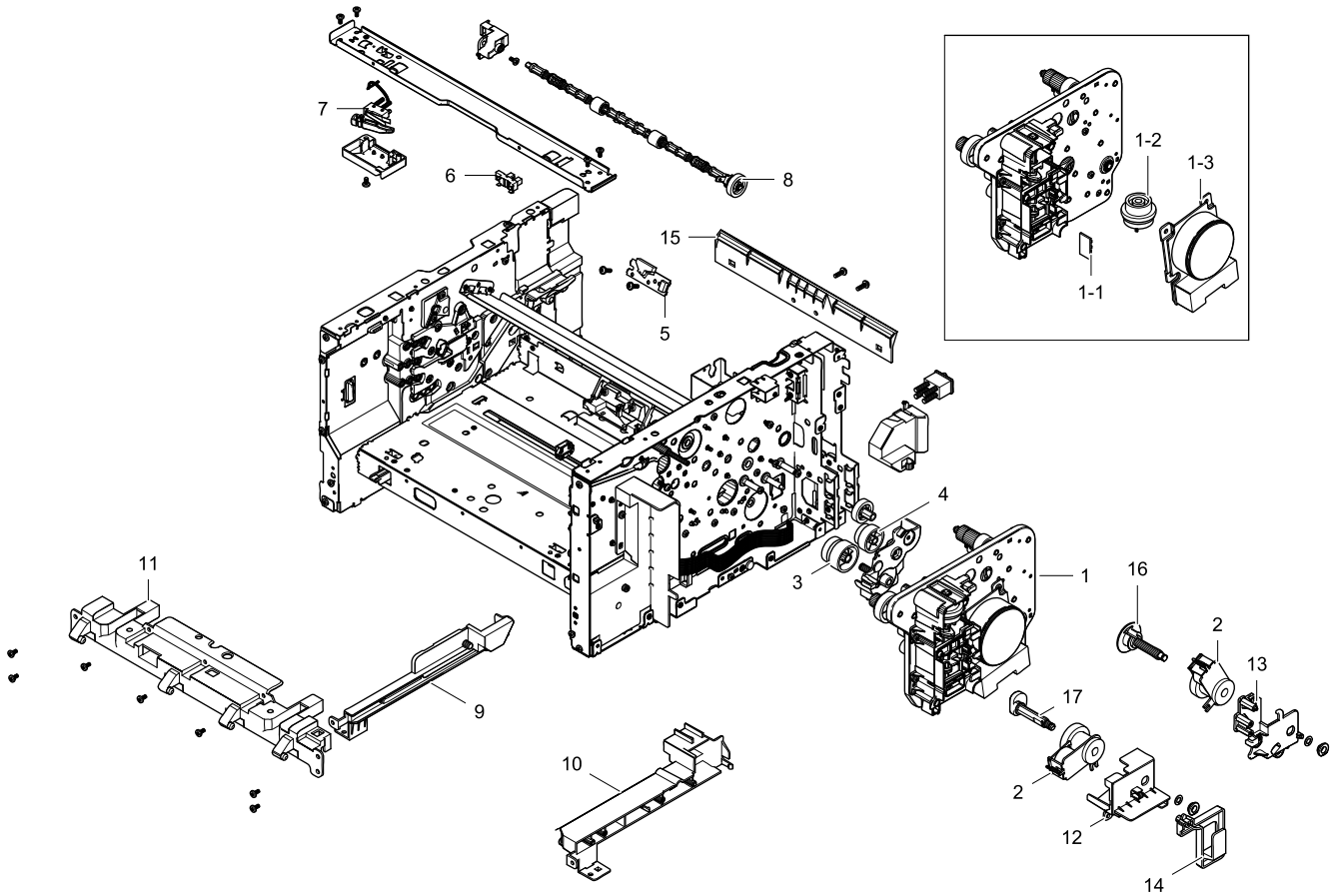
No.	Lvl.	Loc.	Material Code	Description & Specification	SNA	Qty.
0	2		JC93-00547A	FRAME BASE-PAPER PATH; CLP-365W,SEC	SA	1
1	3		JC98-01960A	BOARD-EMPTY SENSOR; CLP-360W,SEC,Photo-In	SNA	1
1-1	4		JC92-02508A	PBA-EMPTY SENSOR; CLP-365W,SEC,EMPTY SENS	SNA	2
2	3		JC66-03321A	ACTUATOR-FEED; CLP-360,ABS+PC,BLACK,ACTUA	SA	1
3	3		JC93-00549A	DRIVE-PICK UP; CLP-365W,SEC	SA	1
4	3	L6828	JC33-00025B	SOLENOID-MANUAL; SCX-5135ND,DC 24V,120ohm	SA	1
5	5		JC47-00033C	CLUTCH-ELECTRIC; 2.5,36,0.6,120mA,200Ohm	SA	1
6	3		JC66-03824A	GEAR-RDCN PH 3; CLP-365W,POM,M0.8 / M0.6,	SNA	1
7	3		JC66-03825A	GEAR-RDCN PICK-UP; CLP-365W,POM,M0.6 / M0	SNA	1



No.	Lvl.	Loc.	Material Code	Description & Specification	SNA	Qty.
8	3		JC66-03826A	GEAR-RDCN REGI; CLP-365W,POM,M0.6 / M0.6,	SNA	1
9	3		JC66-03813A	GEAR-IDLE REGI; CLP-365W,POM,M0.6,Z35,NAT	SNA	1
10	3	C5143	JC61-01548A	HOLDER-M-CAM; CLP-300,POM (DE8903),18.5,2	SA	1
11	3		JC61-05049A	HOLDER-SHAFT IDLE; CLP-365W,POM,NATURAL	SNA	2
12	3	L7445	6107-001309	SPRING-CS; SWP-B,PI0.5,L10,ID4.0,OD5.0	SA	2
13	4		JC39-01704A	HARNES-COVER S/W; CLP-365W,UL10272,2p,BL	SA	1
14	3		JC93-00555A	FRAME BASE-HOLDER PAD; CLP-365W,SEC	SNA	1
15	3		JC66-03322A	ACTUATOR-EMPTY; CLP-360,ABS+PC,BLACK,ACTU	SA	1
16	3		JC66-03317A	ROLLER-REGI; CLP-360,EPDM,SUM22,6	SA	1
17	3		JC66-03899A	SHAFT-FEED IDLE_C; CLP-360,SUM 22,237,8.0	SNA	1
18	3		JC61-05648A	GUIDE-PATH LOWER; CLP-365W,ABS,1.5,20,222	SNA	1
19	3		JC93-00553A	FRAME BASE-PICK UP; CLP-365W,SEC	SA	1
19-1	4	G1665	JC61-01714A	STOPPER-PICK_UP L; ML-2571N,POM,D17,20,NA	SA	1
19-2	4		JC61-05815A	HOUSING-PICKUP A; CLP-365W,ABS+PC,25.7,32	SA	1
19-3	4	C5342	JC61-02389A	HOUSING-PICKUP B; CLP-310,POM F20-02,1.0,	SA	1
19-4	4		JC66-03786A	CAM-CTD; CLP-365W,POM,1.2,NATURAL,Right	SNA	1
19-5	4		JC73-00309A	RUBBER-PICK_UP; CLP-310,EPDM	SA	1

### 5.3. FRAME

#### Exploded View



#### Parts List

No.	Lvl.	Loc.	Material Code	Description & Specification	SNA	Qty.
1	4		JC93-00714A	DRIVE; CLP-365W,SEC,WORLD	SA	1
1-1	5	K4920	JC92-01986A	PBA SUB-DEVEHOME; CLP-310,SEC,SEC,FR-1,1L	SA	1
1-2	5		JC47-00033C	CLUTCH-ELECTRIC; 2.5,36,0.6,120mA,200Ohm	SA	1
1-3	5	L9654	JC31-00091B	MOTOR BLDC; 48M843D010B/BL55K-M01,1443.82	SA	1
2	3	H3697	JC47-00007F	CLUTCH-ITB CAM; 8,33,0.8,133mA,180Ohm	SA	2
3	3		JC66-03829A	GEAR-RDCN PH 2; CLP-365W,POM,M0.5 / M0.8,	SA	1
4	3		JC66-03828A	GEAR-RDCN T2 CAM; CLP-365W,POM,M0.5 / M0.	SA	1
5	4		JC32-00014A	SENSOR-CTD; SENSOR-CTD,0 ~ 60,5V,6.62mA,r	SA	1
6	4	L9633	0604-001415	PHOTO-INTERRUPTER; TR,DIP-4,BK	SA	1
7	4		JC39-01704A	HARNESS-COVER S/W; CLP-365W,UL10272,2p,BL	SA	1

No.	Lvl.	Loc.	Material Code	Description & Specification	SNA	Qty.
8	3		JC91-01078A	FUSER-ROLLER EXIT; CLP-360,SEC,WORLD	SA	1
9	3		JC61-05650A	GUIDE-CASSETTE L; CLP-365W,HIPS,1.5,33.86	SNA	1
10	3		JC61-05649A	GUIDE-CASSETTE R; CLP-365W,HIPS,1.5,35.85	SNA	1
11	3		JC61-05677A	GUIDE-BASE FRONT HINGE; CLP-365W,HIPS,2,3	SA	1
12	3		JC61-05753A	HOLDER-CLUTCH_ITB; CLP-365W,ABS,2,45,54.8	SNA	1
13	3		JC61-05758A	HOLDER-T2 CLUTCH; CLP-365W,HIPS,2,85.1,69	SNA	1
14	3		JC61-04960A	HOUSING-HARNES; CLP-365W,HIPS,2.0T,BLACK	SNA	1
15	3		JC61-05647A	GUIDE-PATH UPPER; CLP-365W,HIPS,1.5,30.35	SNA	1
16	3		JC66-03790A	SHAFT-COUPLER; CLP-365,POM,52,17,WHITE,HB	SNA	1
17	3		JC66-03349A	SHAFT-ITB CLEAN CAM C; CLP-365W,POM,L47.1	SNA	1