

**TOSHIBA**

**SERVICE MANUAL**

**AUTOMATIC DOCUMENT FEEDER**

**MR-2017**



© 2005 TOSHIBA TEC CORPORATION All rights reserved

Under the copyright laws, this manual cannot be reproduced in any form without prior written permission of TOSHIBA TEC CORPORATION. No patent liability is assumed, however, with respect to the use of the information contained herein.

# **General Precautions for Installation/Service/Maintenance for the MR-2017**

**The installation and service should be done by a qualified service technician.**

- 1) When installing the MR-2017 to the Equipment, be sure to follow the instructions described in the “Unpacking/Set-Up Procedure for the MR-2017” booklet which comes with each unit of the MR-2017.
- 2) The MR-2017 should be installed by an authorized/qualified person.
- 3) Before starting installation, servicing or maintenance work, be sure to turn OFF and unplug the equipment first.
- 4) When servicing or maintaining the MR-2017, be careful about the rotating or operation sections such as gears, pulleys, sprockets, cams, belts, etc.
- 5) When parts are disassembled, reassembly is basically the reverse of disassembly unless otherwise noted in this manual or other related materials. Be careful not to reassemble small parts such as screws, washers, pins, E-rings, toothed washers to the wrong places.
- 6) Basically, the machine should not be operated with any parts removed or disassembled.
- 7) Delicate parts for preventing safety hazard problems (such as switches, sensors, etc. if any) should be handled/installed/adjusted correctly.
- 8) Use suitable measuring instruments and tools.
- 9) During servicing or maintenance work, be sure to check the serial No. plate and other cautionary labels (if any) to see if they are clean and firmly fixed. If not, take appropriate actions.
- 10) The PC board must be stored in an anti-electrostatic bag and handled carefully using a wristband, because the ICs on it may be damaged due to static electricity. Before using the wrist band, pull out the power cord plug of the equipment and make sure that there is no uninsulated charged objects in the vicinity.
- 11) For the recovery and disposal of used MR-2017, consumable parts and packing materials, follow the relevant local regulations/rules should be followed.
- 12) After completing installation, servicing and maintenance of the MR-2017, return the MR-2017 to its original state, and check operation.



# CONTENTS

<b>1. SPECIFICATION .....</b>	<b>1-1</b>
<b>2. GENERAL DESCRIPTION.....</b>	<b>2-1</b>
2.1 Main Components.....	2-1
2.2 Sectional View .....	2-2
2.3 Electric Parts Layout.....	2-3
2.4 Symbols and Functions of Various Components.....	2-4
2.5 Diagram of Signal Blocks.....	2-5
2.6 Description of Interface Signals.....	2-6
<b>3. DESCRIPTION OF OPERATIONS .....</b>	<b>3-1</b>
3.1 DRIVE SYSTEM.....	3-1
3.1.1 Outline .....	3-1
3.1.2 Original feed motor drive section.....	3-2
3.1.3 Read motor drive section .....	3-3
3.2 Original Size Detection .....	3-4
3.2.1 Outline .....	3-4
3.2.2 Original tray width sensor.....	3-4
3.3 FLOW CHART .....	3-5
3.4 DESCRIPTION OF CIRCUIT.....	3-9
3.4.1 Drive Circuit for Feed Motor .....	3-9
3.4.2 Drive Circuit for Read Motor.....	3-10
3.4.3 Reset Circuit .....	3-11
3.4.4 Drive Circuit for Pickup Solenoid .....	3-11
<b>4. DISASSEMBLY AND ASSEMBLY .....</b>	<b>4-1</b>
4.1 Cover .....	4-1
4.2 Roller .....	4-5
4.3 Motor / Motor drive section .....	4-16
4.4 Solenoid.....	4-21
4.5 Sensor/switch .....	4-22
4.6 PC Board .....	4-28
4.7 Others .....	4-29
<b>5. ADJUSTMENT .....</b>	<b>5-1</b>
5.1 Adjustment of Position .....	5-1
5.2 Adjustment of Height .....	5-6
5.3 Adjustment of Skew.....	5-8
5.4 Adjustment of the Leading Edge Position.....	5-10
5.5 Adjustment of Horizontal Position.....	5-11
5.6 Adjustment of Copy Ratio .....	5-12
5.7 Adjustment of ADF Opening/Closing Sensor.....	5-13
<b>6. TROUBLESHOOTING .....</b>	<b>6-1</b>
6.1 Troubleshooting for Mechanical Errors.....	6-1
6.2 Troubleshooting for Electrical Errors .....	6-2
<b>7. MAINTENANCE AND REWRITING ROM .....</b>	<b>7-1</b>
7.1 Periodic Maintenance .....	7-1
7.2 Rewriting ROM (Firmware Updating).....	7-2
<b>8. CIRCUIT DIAGRAM / HARNESS DIAGRAM .....</b>	<b>8-1</b>
8.1 Assembly of PC Board.....	8-1
8.2 Circuit Diagram .....	8-3
8.3 Control PC Board Circuit .....	8-5



# 1. SPECIFICATION

Item	Contents	Remarks
Maximum number of originals on the original feeding tray	Up to 100 sheets or 16 mm in height.	50 - 80 g/m <sup>2</sup> (13.3 - 21.3 lb. Bond)
Acceptable paper size	A5-R, A4, A4-R, B5, B5-R, B4, A3, FOLIO, ST-R, LT, LT-R, LG, LD, COMPUTER	
Acceptable paper weight	50 - 127 g/m <sup>2</sup> (13.3 lb. Bond - 33.8 lb. Cover)	
Dimensions	W600 x D513 x H135 (mm)	Excluding hinges and original tray
Weight	Approx. 11 kg	
Power consumption	Approx. 30 W	
Power requirements	DC5 V, DC24 V	Supplied from the equipment
Co-packed items	Unpacking Instruction (1 set) Charts (A4/LT: 1 sheet each) Mounting screws (6 pcs) Positioning pins (2 pcs) Washer (1 pc) Hinge bracket (1 pc) Hinge bracket fixing screw (3 pcs) Hinge bracket cover (1 pc) Connector cover (1 pc)	





## 2. GENERAL DESCRIPTION

### 2.1 Main Components

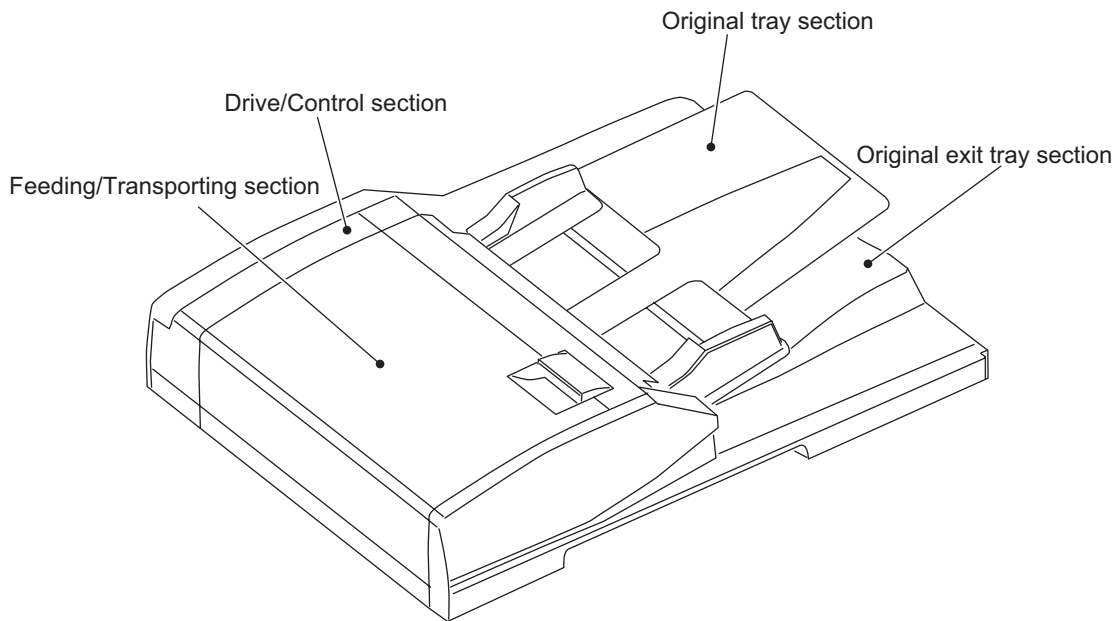


Fig. 2-1

Location	Components	
Feeding/Transporting section	Pickup roller Feed roller Separation roller Registration roller Intermediate transfer roller Pre-reading roller Platen roller Post-reading roller Exit roller	Original empty sensor (S3) Original registration sensor (S4) Read sensor (S5) Original exit sensor (S6) Jam access cover sensor (S7)
Original tray section	Original width guide Original tray	Original tray sensor (S1) Original tray width sensor (S2)
Original exit tray section	Original exit tray	
Drive/Control section		Original feed motor (M1) Read motor (M2) Original pickup solenoid (SOL) ADF opening/closing sensor (S8) Jam access cover opening/closing switch (SW) ADF control PC board (ADF)

## 2.2 Sectional View

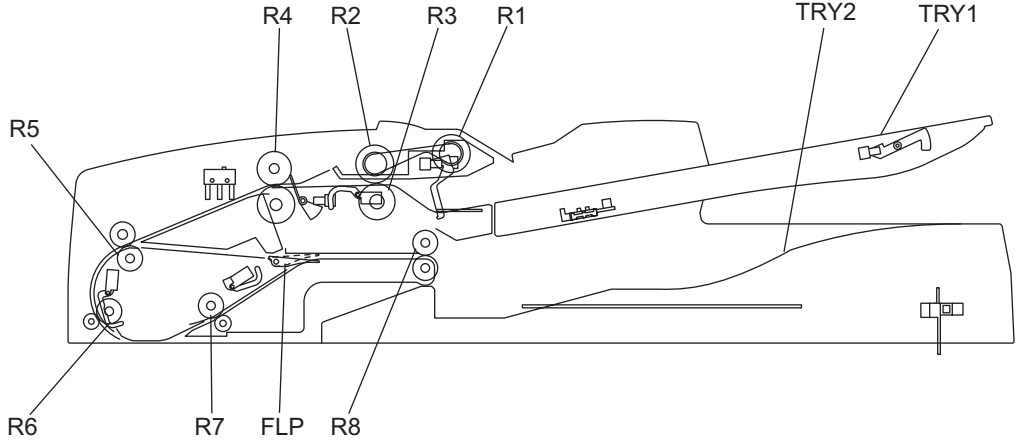


Fig. 2-2

TRY1	Original tray	R4	Registration roller
TRY2	Original exit tray	R5	Intermediate transfer roller
FLP	Exit gate	R6	Pre-reading roller
R1	Pickup roller	R7	Post-reading roller
R2	Feed roller	R8	Exit roller
R3	Separation roller		

### 2.3 Electric Parts Layout

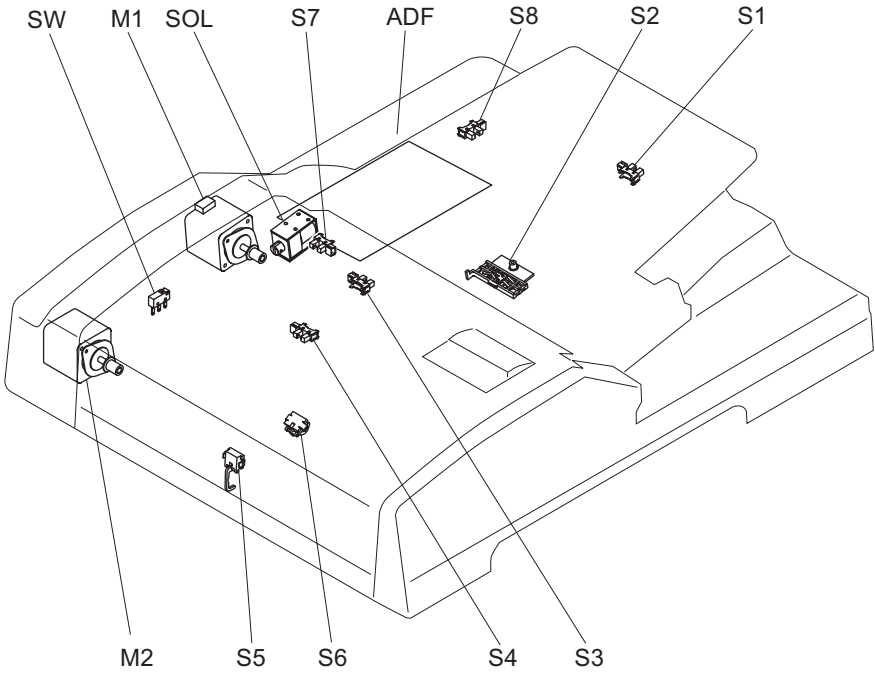


Fig. 2-3

## 2.4 Symbols and Functions of Various Components

### 1) Motors

Symbol	Name	Function
M1	Original feed motor	Drives the original feed roller, pickup roller and registration roller.
M2	Read motor	Transports originals by driving the intermediate transport roller, front read roller, rear read roller and exit roller.

### 2) Sensors and Switches

Symbol	Name	Function
S1	Original tray sensor	Detects the length of the original set on the original tray.
S2	Original tray width sensor	Detects the width of the original set on the original tray.
S3	Original empty sensor	Detects the original set on the original tray.
S4	Original registration sensor	Detects transport of the original at the registration roller section.
S5	Read sensor	Detects the leading edge of the original at the original scanning section.
S6	Original exit sensor	Detects the exit (transit) of an original.
S7	Jam access cover sensor	Detects opening/closing of the Jam access cover.
S8	ADF opening/closing sensor	Detects opening/closing of the ADF.
SW	Jam access cover opening/closing switch	Switches between cutoff and supply state of the 24 V power by opening/closing of the jam access cover.

### 3) Solenoid

Symbol	Name	Function
SOL	Original pickup solenoid	Drives up and down the original pickup roller.

### 4) PC board

Symbol	Name	Function
ADF	ADF control PC board (ADF board)	Controls the ADF.

## 2.5 Diagram of Signal Blocks

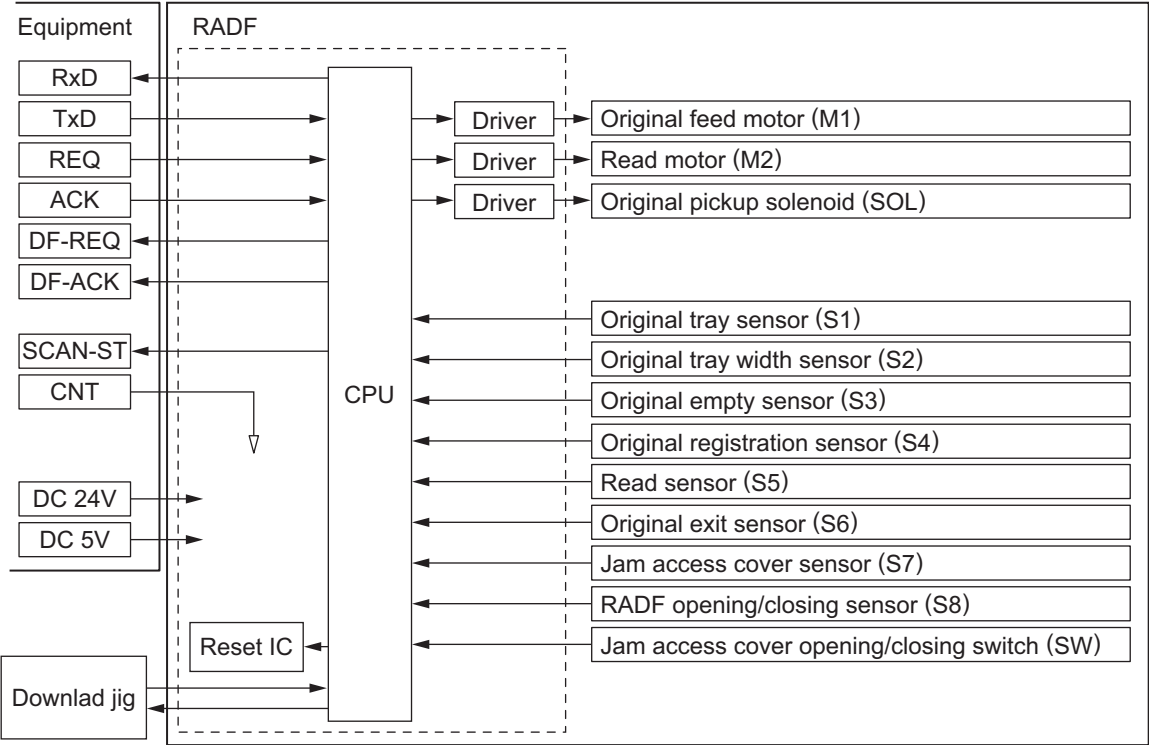


Fig. 2-4

## 2.6 Description of Interface Signals

The following 6 lines are used to transmit/receive signals between the equipment and the ADF.

- REQ .....Communication request signal (from equipment to the ADF)
- DF-REQ .....Communication request signal (from the ADF to equipment)
- DF-ACK.....Communication request acknowledging signal (from the ADF to equipment)
- ACK.....Communication request acknowledging signal (from equipment to the ADF)
- TxD .....Data transmitted from equipment to the ADF
- RxD .....Data transmitted from the ADF to equipment

Data communication (RxD and TxD) between the scanner and the ADF has adopted the serial communication system which does not allow checking using testing devices to see whether the signals are transmitted/received properly in the field.

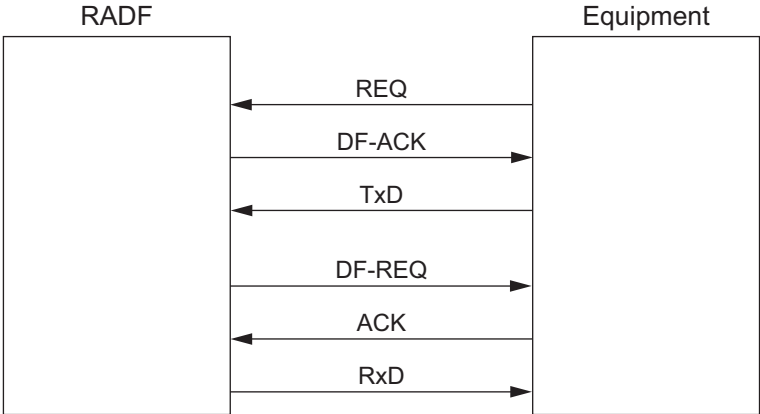


Fig. 2-5

### 3. DESCRIPTION OF OPERATIONS

#### 3.1 DRIVE SYSTEM

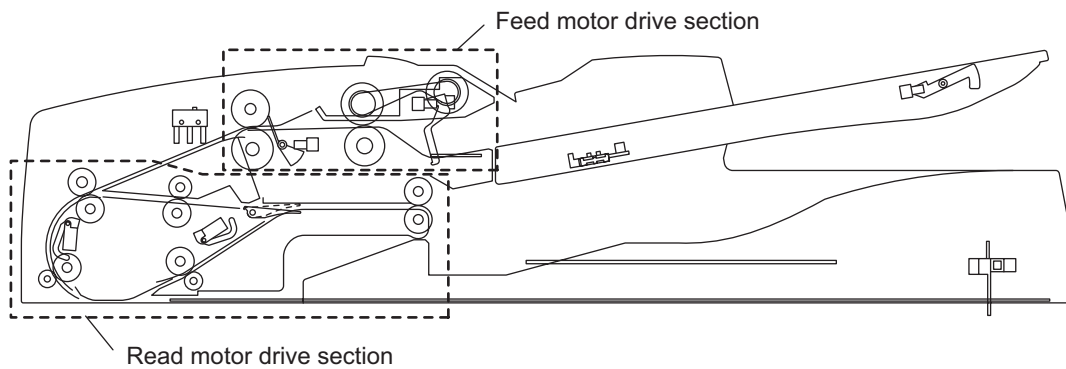


Fig. 3-1

##### 3.1.1 Outline

Originals are transported by the original feed motor and read motor. Each motor has a drive section for the following operations:

Original feed motor drive section:	picks up originals and drives the registration roller.
Read motor drive section:	transports originals and drives parts such as the exit roller.

The Original feed motor rotates reversely when the originals are being transported at the registration roller, compared to its rotational direction when they are being picked up.  
The read motor always rotates in a constant direction.

### 3.1.2 Original feed motor drive section

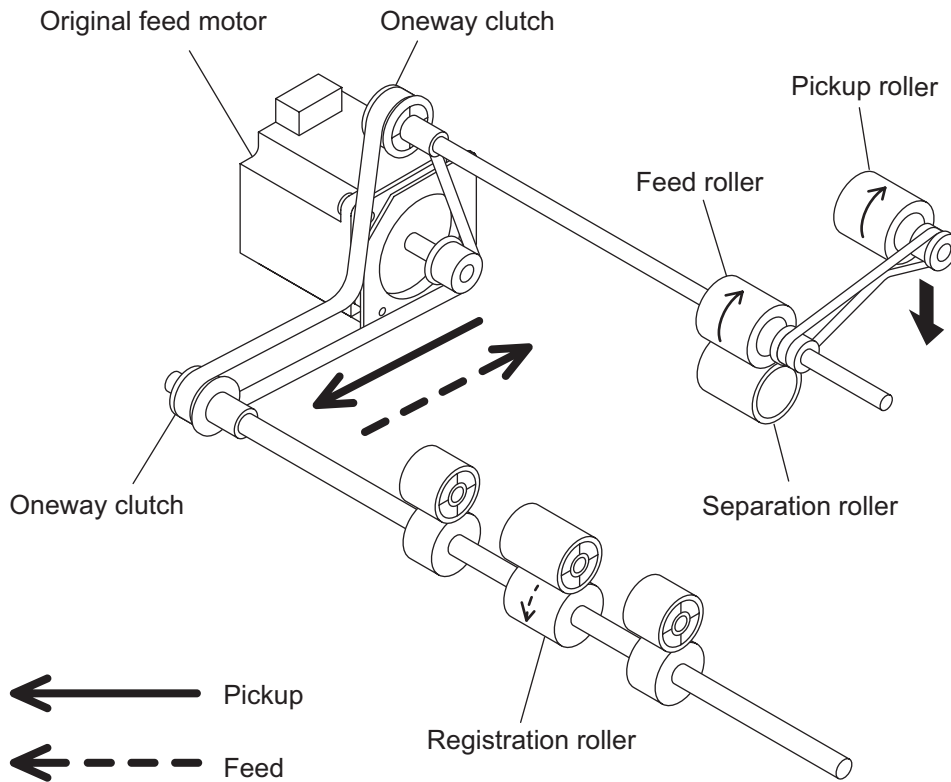
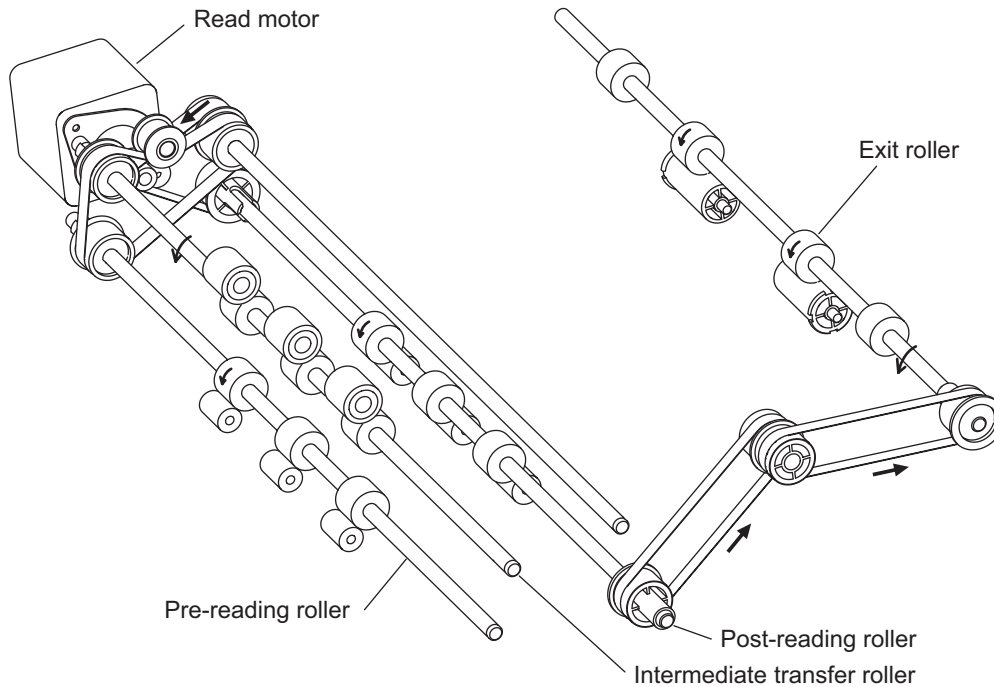


Fig. 3-2

When an original is placed on the original tray and the RADF receives a feed request signal from the equipment, the feeding of the original is started. The original empty sensor detects the presence of the original, and then the pickup roller is lowered by the drive from the original pickup solenoid. The Original feed motor rotates, and the pickup roller and the feed roller then rotate in a normal direction (shown in a solid line in the figure) to guide the original into the transport path. Then the original is transported to the registration roller to be aligned. The original aligned with the registration roller is then transported by the reverse rotation of the Original feed motor (shown in a dotted line in the figure). A one-way clutch is installed inside of each gear of the feed roller and the registration roller, so these gears will not be driven in a reverse rotation. When the original empty sensor detects that there is no original on the original tray, the original pickup solenoid is turned OFF and the pickup roller is raised. The original pickup solenoid is the one can operate both suction and recovery.



### 3.1.3 Read motor drive section



The transported original is driven by the read motor.

Then the original is transported to a scanning start position by the intermediate transfer roller and pre-reading roller.

The original transported to the scanning start position is then scanned in the scanner function of the equipment.

When the data of the original have been scanned, the original is then transported to the original exit tray side by the post-reading roller.

## 3.2 Original Size Detection

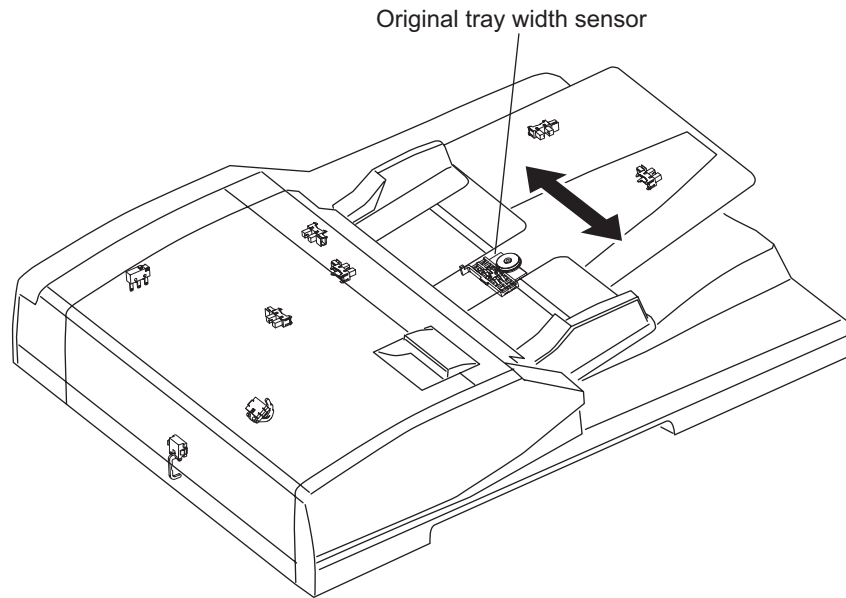


Fig. 3-3

### 3.2.1 Outline

When an original is placed on the original tray, the width of the original is detected by the positions of the original width guides.

### 3.2.2 Original tray width sensor

The original tray width sensor detects the width of the original placed on the original tray.

This sensor consists of a leaf spring and 4 contacting points (= 4 harnesses). When the original width guides are moved, a protruded part located under the guides pushes the leaf spring, and the leaf spring thus contacts the harnesses. The gap between these guides is detected by this contact.

A terminal connected with the black harness is for grounding (= common). When the leaf spring contacts with each harness of gray, yellow and orange, each terminal connected with these harnesses generates a signal at a low level.

The combination of these contact (= low level) and release (= high level) can determine the width of the original.

Sizes detectable in combination of these contact and release are as follows:

TWIDTH2 (Orange)	TWIDTH1 (Yellow)	TWIDTH0 (Gray)	Original width size (LT series)	Original width size (A4 series)
H	H	H	LD / LT	A3 / A4
H	H	L	-	B5-R
H	L	H	ST-R	A5-R
L	H	H	LD / LT	A3 / A4
L	H	L	-	Postcard
L	L	H	8.5x8.5 / LT-R / KLG / 13"LG	A4-R / FOLIO
L	L	L	COMPUTER	B4 / B5

H (= high level): Release    L (= low level): Contact

### 3.3 FLOW CHART

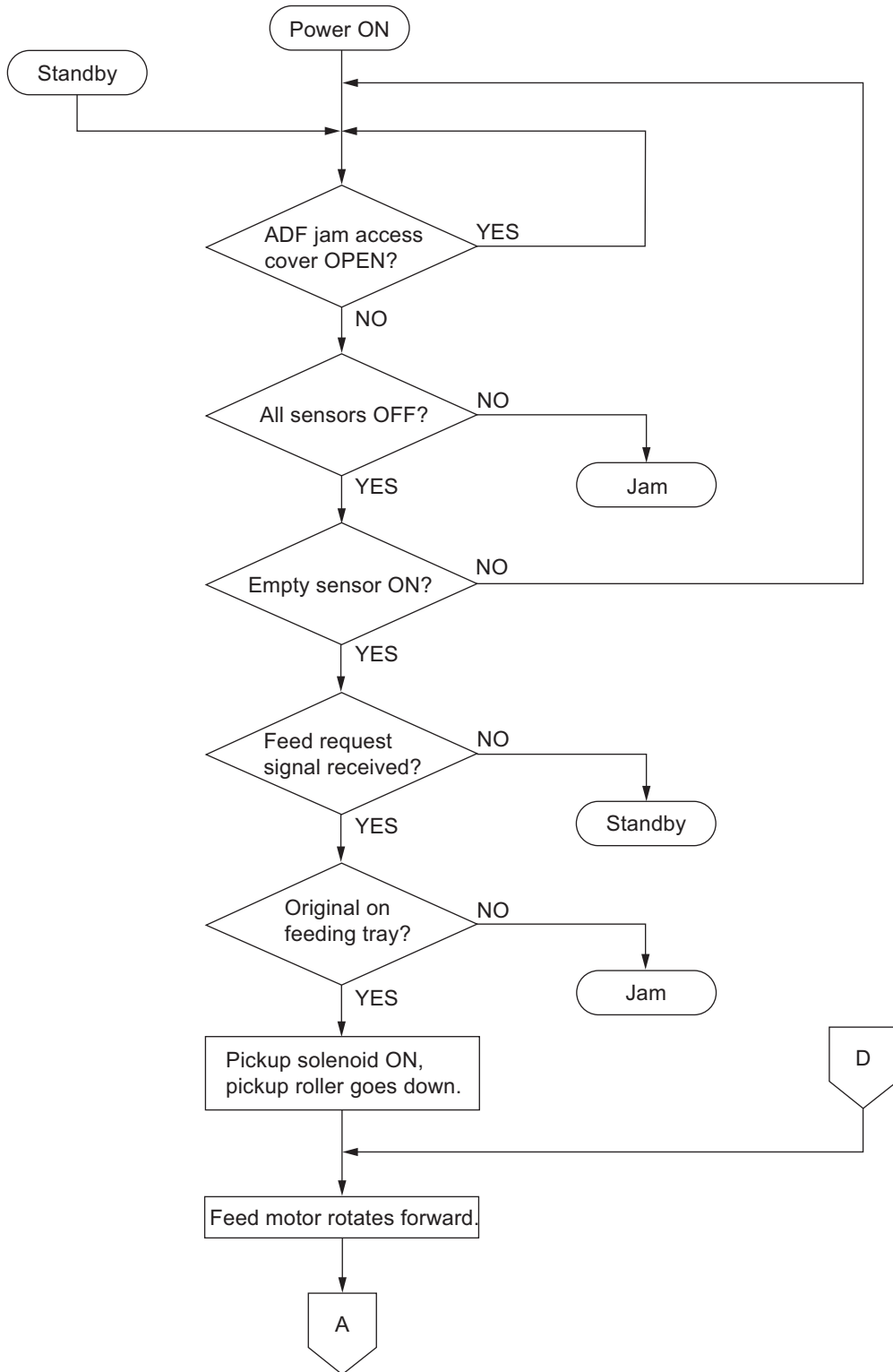


Fig. 3-4

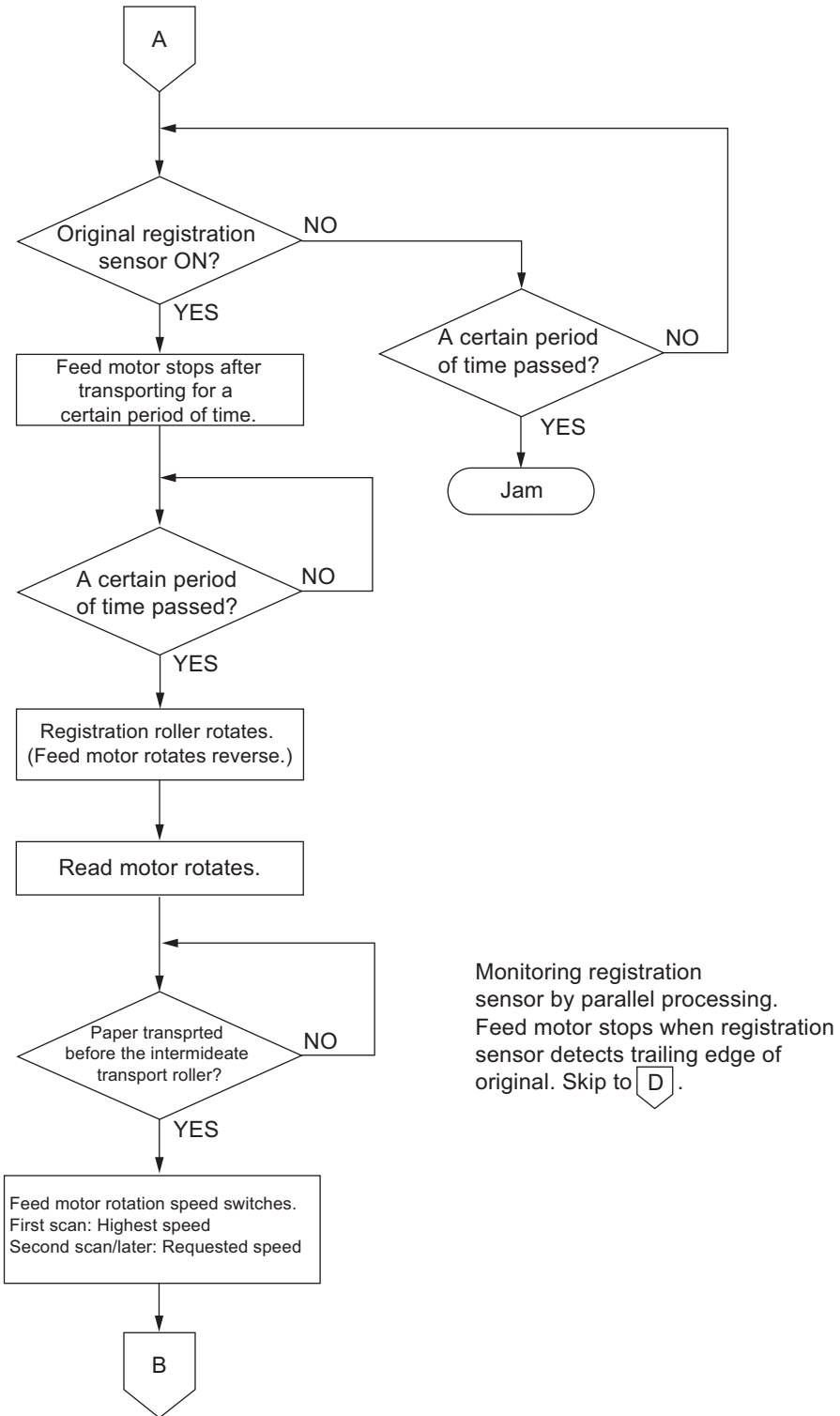


Fig. 3-5

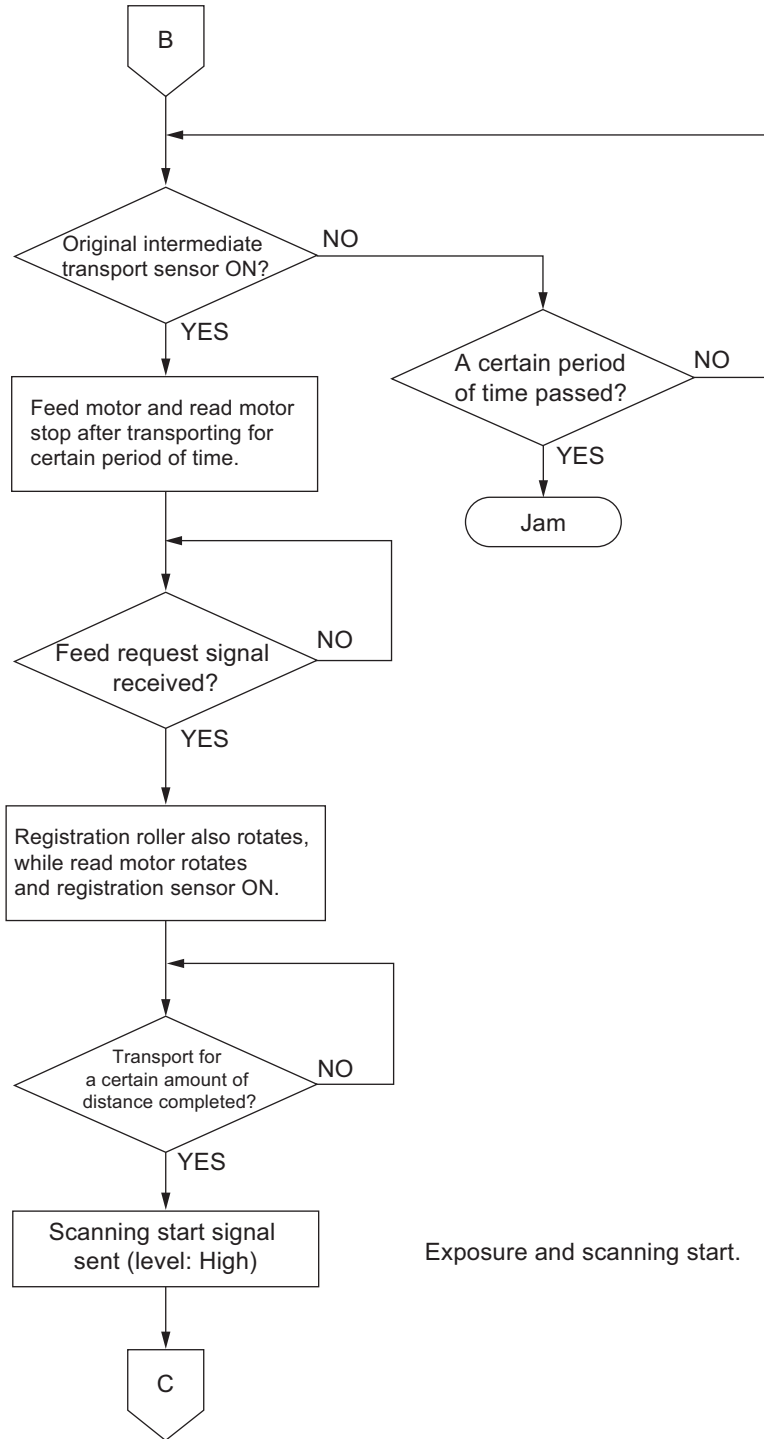


Fig. 3-6

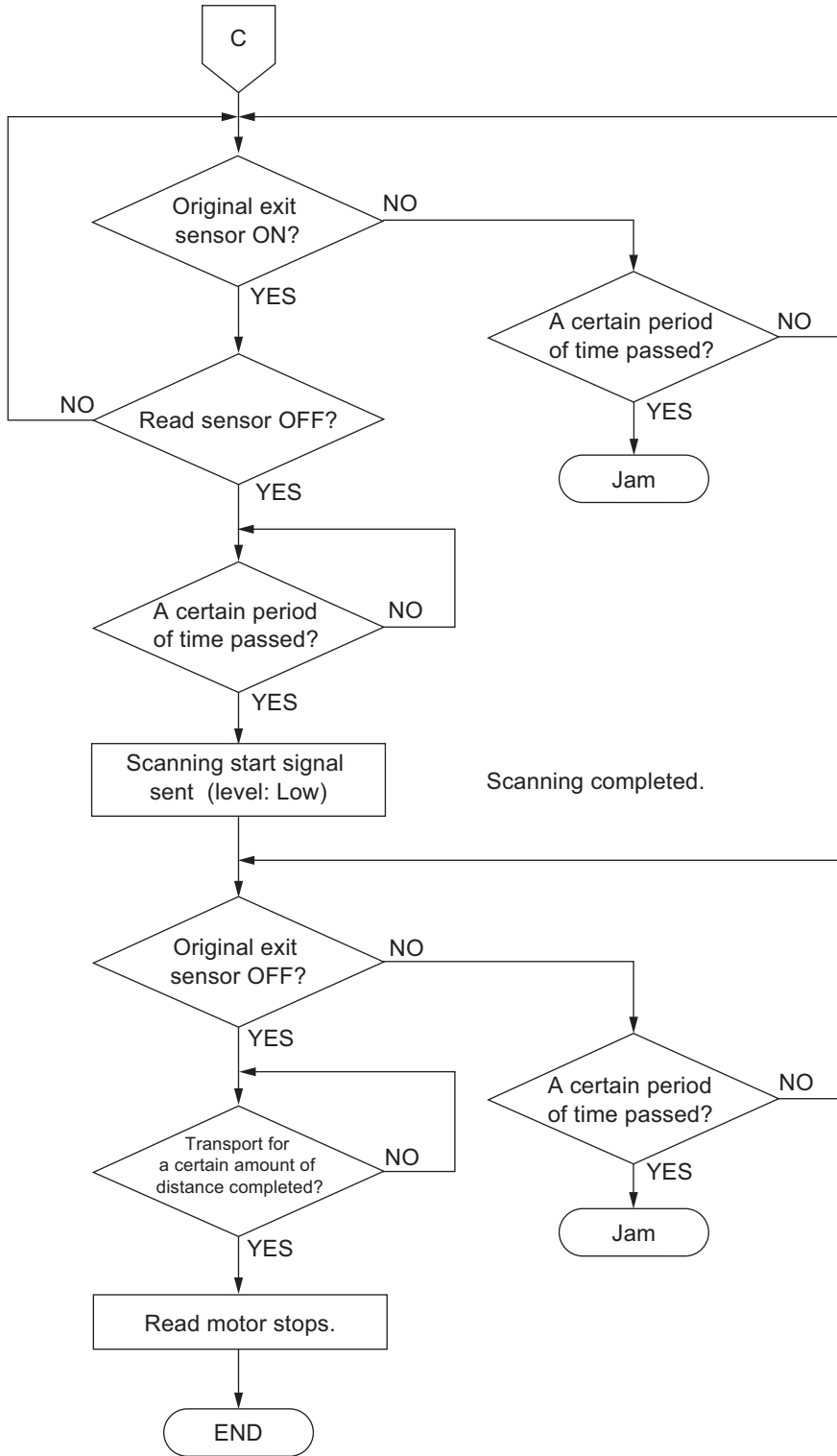


Fig. 3-7

## 3.4 DESCRIPTION OF CIRCUIT

### 3.4.1 Drive Circuit for Feed Motor

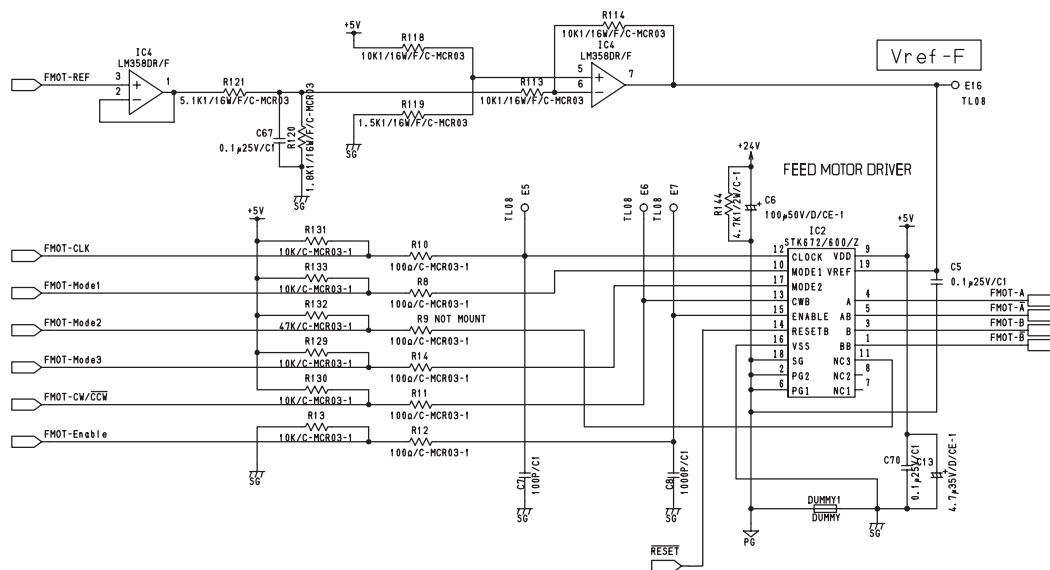


Fig. 3-8

This circuit controls the rotation/stoppage and the direction of rotation, excitation mode and motor current of the feed motor.

A drive clock signal (FMOT-CLK) and rotation direction signal (FMOT-CW/CCW) are input to control the speed and direction of the motor rotation.

When the level of the enabling signal (FMOT-Enable) is set to "L", motor current is turned OFF regardless of the state of other signals.

For the excitation mode, either of 2 phase excitation or 1-2 phase excitation can be selected using the excitation switching signal (FMOT-Mode1/FMOT-Mode2).

The edge switching signal (FMOT-Mode3) is used to specify the switching timing for excitation phase either from when both the rise and decay edge of the CLK input are detected or when only the rising edge is detected.

Motor current value can be set discretionary by changing the level of the reference setting signal (FMOT-REF).

### 3.4.2 Drive Circuit for Read Motor

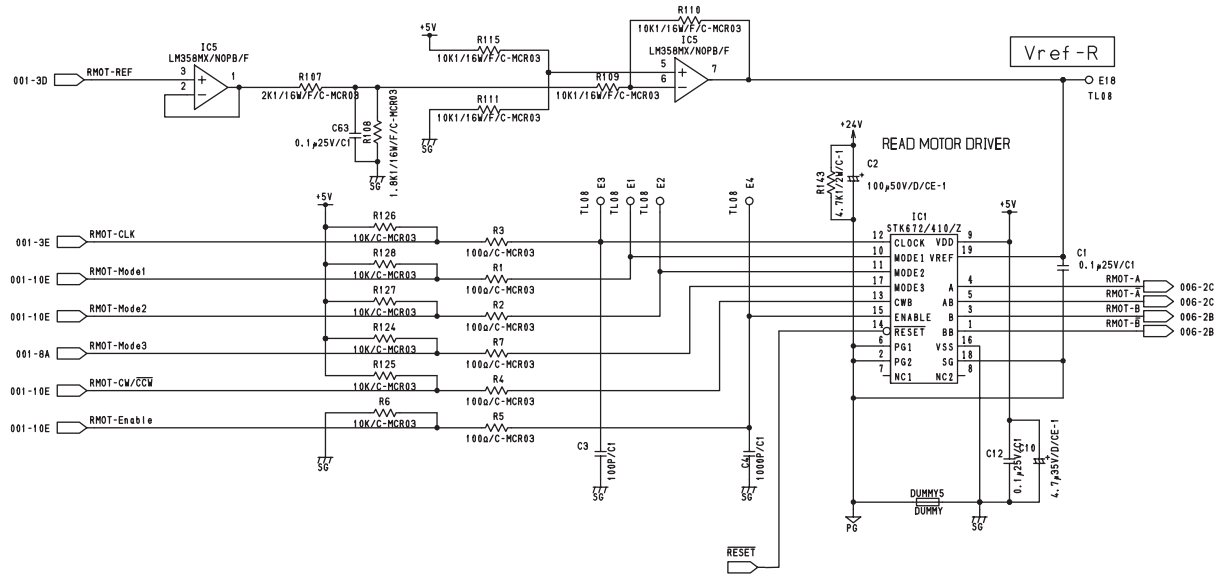


Fig. 3-9

This circuit controls the rotation/stoppage and the direction of rotation, excitation mode and motor current of the read motor.

A drive clock signal (R10T-CLK) and rotation direction signal (R10T-CW/ $\overline{\text{CCW}}$ ) are input to control the speed and direction of the motor rotation.

When the level of the enabling signal (R10T-Enable) is set to "L", motor current is turned to OFF regardless of the state of other signals.

For the excitation mode, either of 2 phase excitation, 1-2 phase excitation, W1-2 phase excitation, 2W1-2 phase excitation or the 4W1-2 phase excitation can be selected using the excitation switching signal (R10T-Mode1/R10T-Mode2).

The edge switching signal (R10T-Mode3) is used to specify the switching timing for excitation phase either from when both the rise and decay edge of the CLK input are detected or when only the rising edge is detected.

Motor current value can be set discretionary by changing the level of the reference setting signal (R10T-REF).



### 3.4.3 Reset Circuit

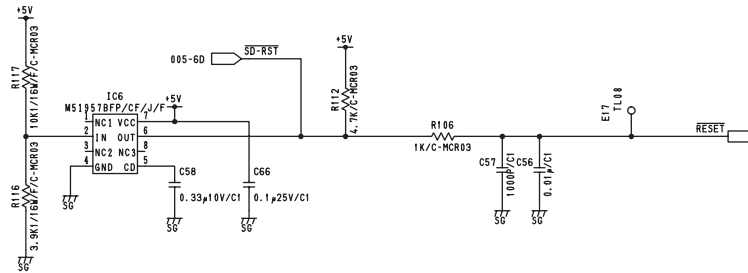


Fig. 3-10

This circuit generates a reset signal when the power is turned ON and the power voltage is blocked or cut off/lowered temporarily.

At the power-ON, the circuit shifts the level of the reset signal from “L” to “H” to put the CPU in a operative state after the reset pulse duration ( $T_{pd}$ ) determined by the capacitance of C58 has passed from when the power voltage has reached the supervisory voltage ( $V_s$ ) divided by R116 and R117.

When a power voltage drop (cutoff, temporary cutoff, temporary low voltage) occurs and the power voltage becomes lower than the set value for the supervisory voltage for the power, the circuit sets the level of the reset signal ( $\overline{\text{RESET}}$ ) to “L” to put the CPU in a halt state.

### 3.4.4 Drive Circuit for Pickup Solenoid

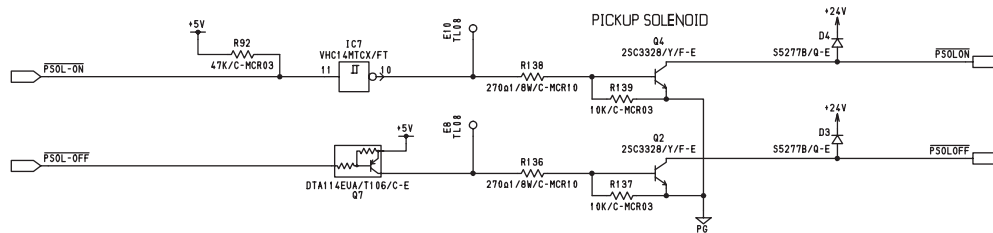


Fig. 3-11

Pick up solenoid is a two-way solenoid that can be operated both in suction and recovery, and driven by two transistors (Q4 and Q2) for each operation respectively.

When the PSOL-ON-Signal level is set to “L”, Q4 is turned ON, the power of 24V is applied to the coil for suction operation, the solenoid is turned ON, and then the pickup roller goes down.

When the PSOL-ON-Signal level is set to “L”, Q2 is turned ON, the power of 24V is applied to the coil for recovery operation, the solenoid is turned OFF, and then the pickup roller goes up.



## 4. DISASSEMBLY AND ASSEMBLY

### 4.1 Cover

#### [A] Front cover

- (1) Open the RADF and remove 3 screws.

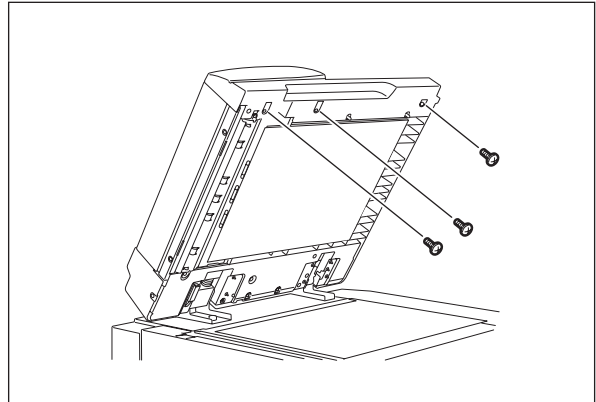


Fig. 4-1

- (2) Close the RADF.
- (3) Open the jam access cover and remove 2 screws.

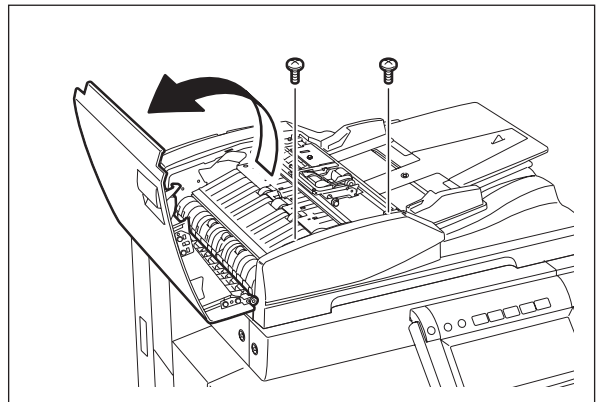


Fig. 4-2

- (4) Take off the front cover toward you.

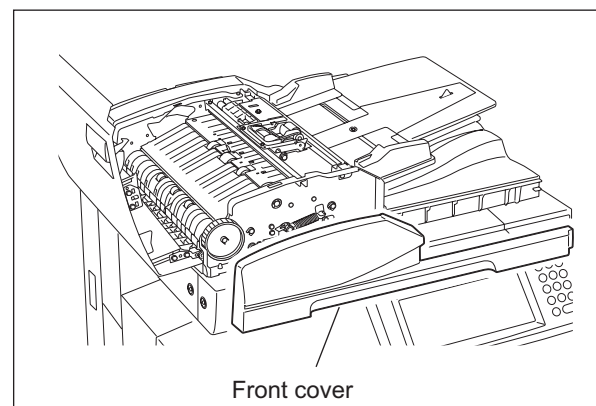


Fig. 4-3

## [B] Rear cover

- (1) Open the jam access cover and remove 4 screws.

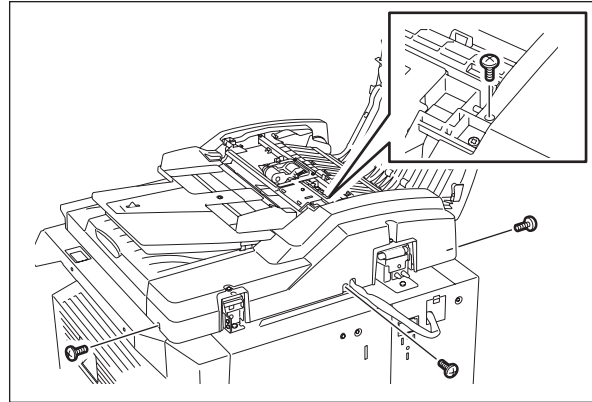


Fig. 4-4

- (2) Raise the original tray and take off the rear cover upward.

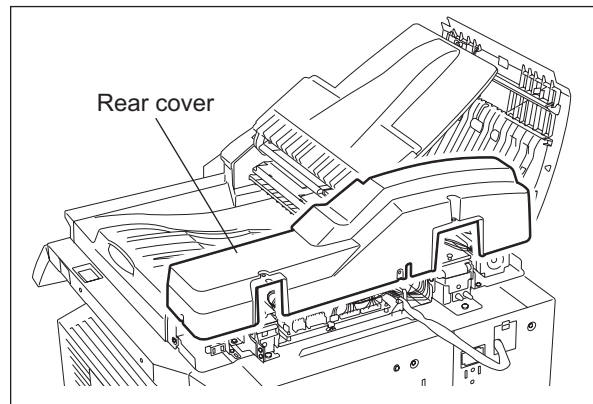


Fig. 4-5

## [C] Jam access cover

- (1) Take off the front cover.  
( P. 4-1 "[A] Front cover")
- (2) Take off the rear cover.  
( P. 4-2 "[B] Rear cover")
- (3) Remove 1 clip and then the dial and pin.

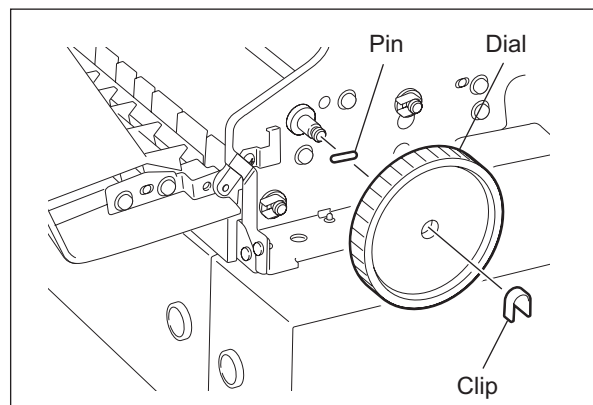


Fig. 4-6

- (4) Remove 1 screw and the hinge pin.

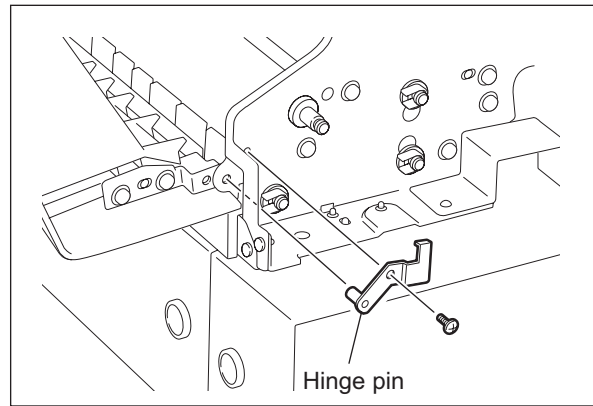


Fig. 4-7

- (5) Take off the jam access cover by sliding it.

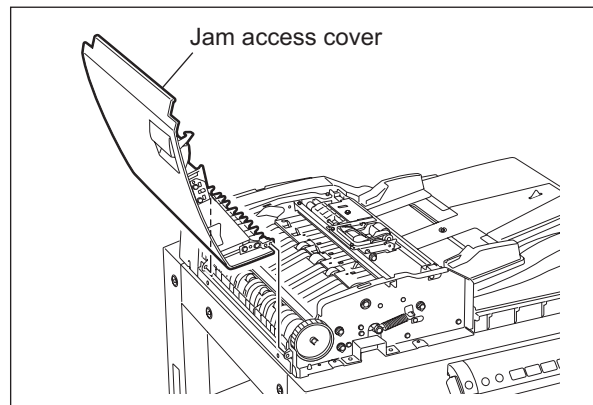


Fig. 4-8

**[D] Left cover**

- (1) Remove 2 screws and take off the left cover.

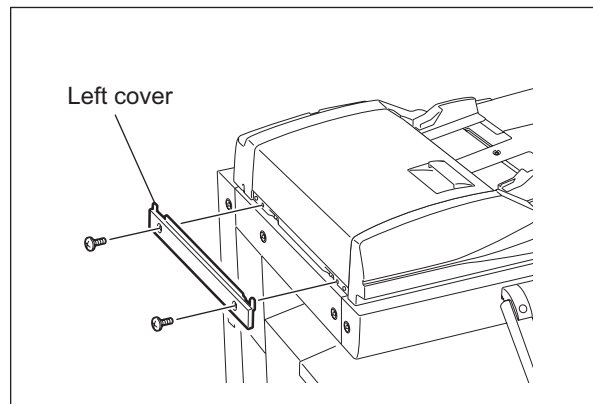


Fig. 4-9

## [E] Original tray

- (1) Take off the front cover.  
(☞ P. 4-1 "[A] Front cover")
- (2) Take off the rear cover.  
(☞ P. 4-2 "[B] Rear cover")
- (3) Take off the paper feeder unit.  
(☞ P. 4-5 "[A] Paper feeder unit")
- (4) Remove 2 screws. Lift up the feeder upper guide by sliding it to the right.

**Note:**

Do not pull the harness too strong.

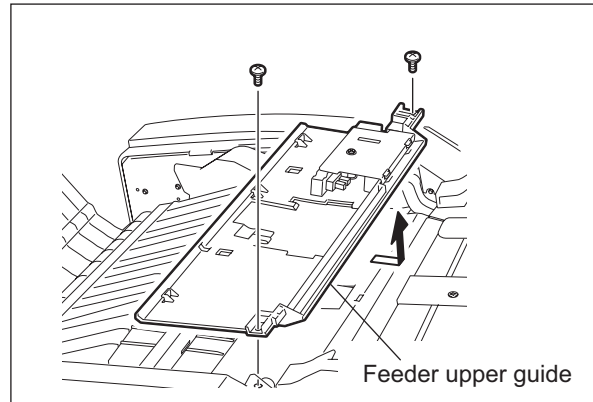


Fig. 4-10

- (5) Disconnect 1 connector from the ADF control PC board.

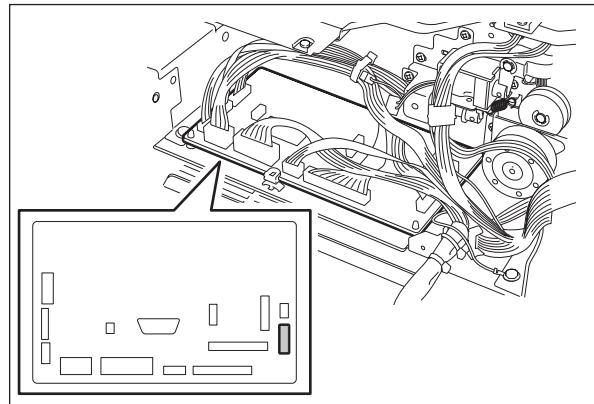


Fig. 4-11

- (6) Remove 1 screw and take off the bushing.
- (7) Take off the original tray.

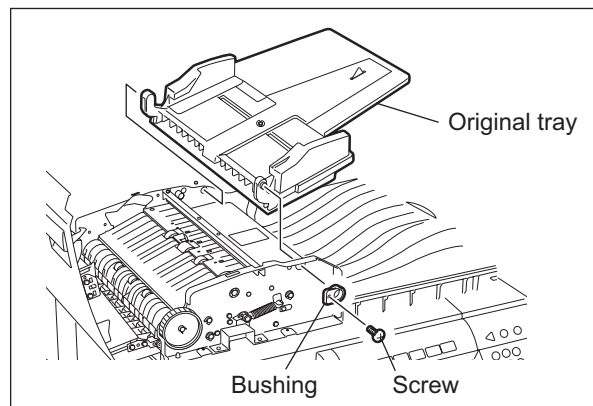


Fig. 4-12

## 4.2 Roller

### [A] Paper feeder unit

- (1) Open the jam access cover.
- (2) Remove 2 screws and take off the bracket.

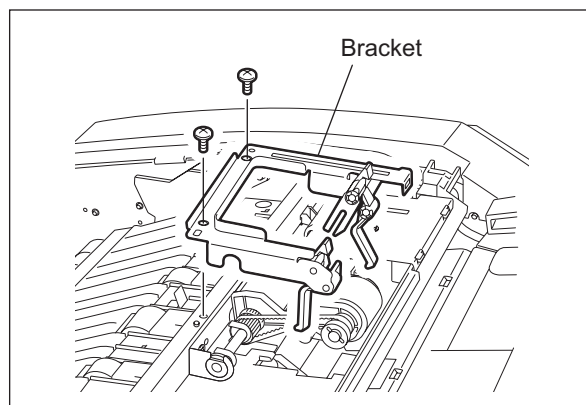


Fig. 4-13

- (3) Remove 1 clip and slide 2 bushings.

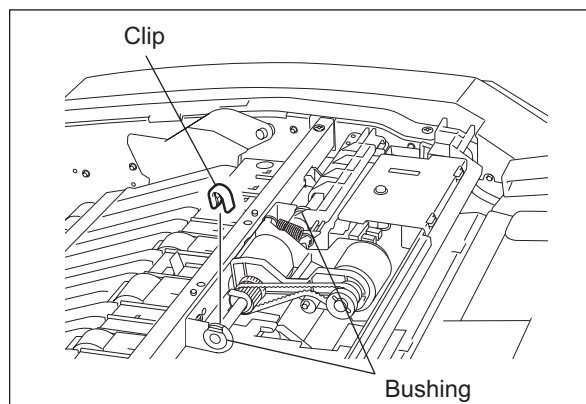


Fig. 4-14

- (4) Take off the paper feeder unit.

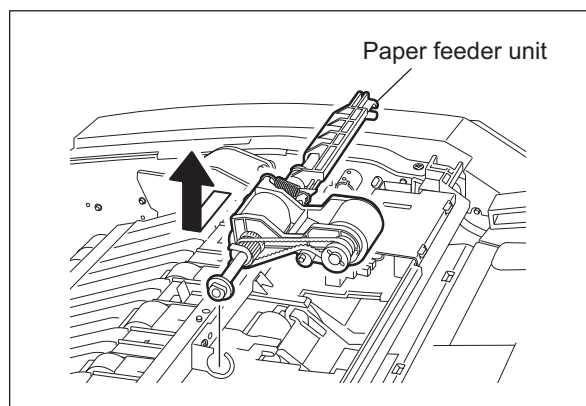



Fig. 4-15

## [B] Pickup roller [PM]

- (1) Take off the paper feeder unit.  
( P. 4-5 "[A] Paper feeder unit")
- (2) Remove 1 clip and pull out the shaft. Take off the pickup roller.

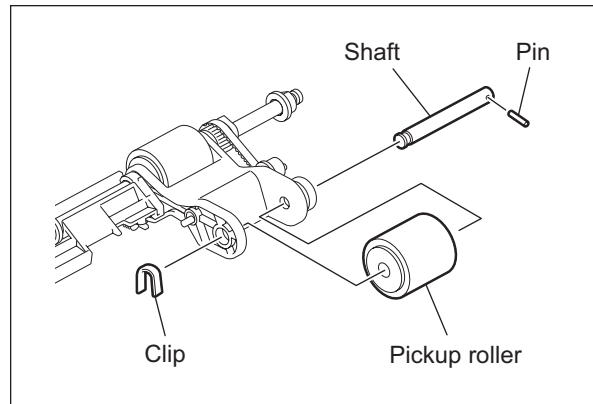


Fig. 4-16

### Notes:

1. Be careful not to drop the pin because it will come off when the shaft is pulled out.
2. Make sure you assemble the pickup roller with the one-way clutch in the correct direction.

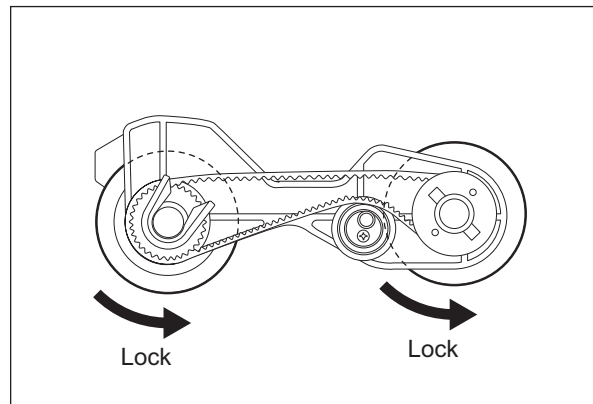



Fig. 4-17

## [C] Feed roller [PM]

- (1) Take off the paper feeder unit.  
( P. 4-5 "[A] Paper feeder unit")
- (2) Remove 1 clip.

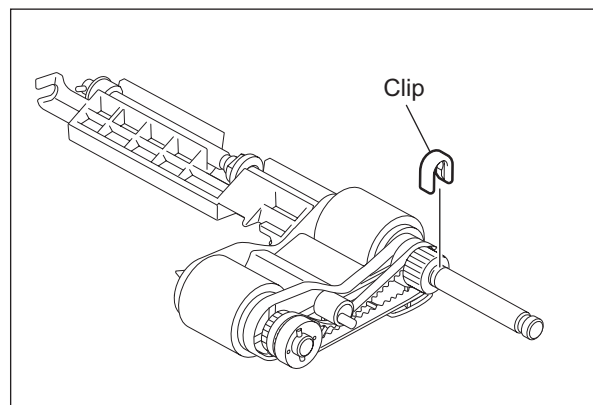


Fig. 4-18



(3) Slide the pulley and remove 1 pin.

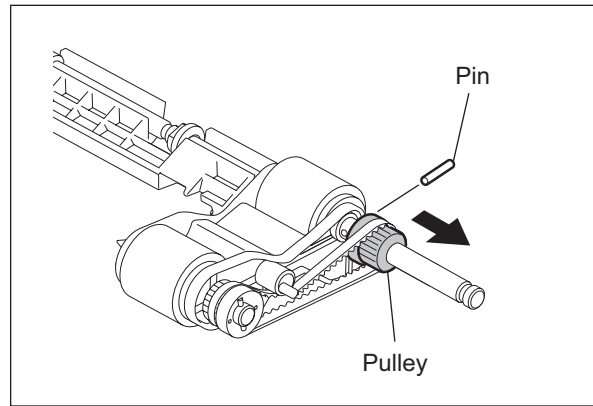


Fig. 4-19

(4) Pull out the shaft and take off the feed roller.

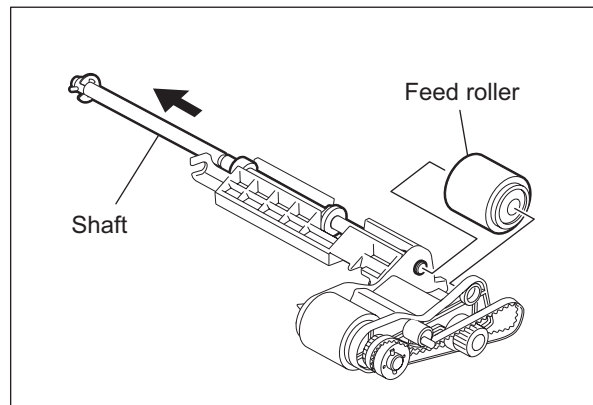


Fig. 4-20

**Note:**

Make sure you assemble the feed roller with the one-way clutch in the correct direction.

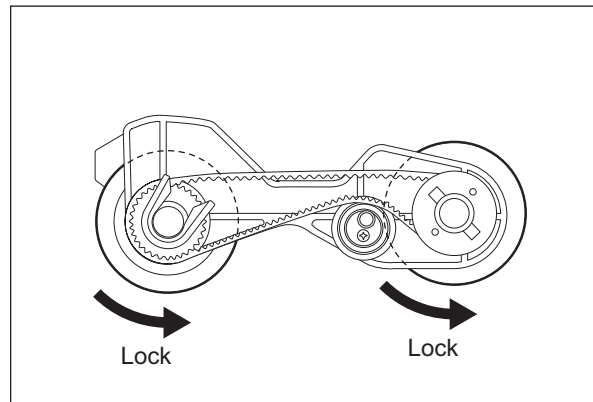



Fig. 4-21

## [D] Separation roller [PM]

- (1) Take off the paper feeder unit.  
( P. 4-5 "[A] Paper feeder unit")
- (2) Remove 2 screws. Slide the feeder upper guide to the right and raise it.

**Note:**

Do not pull the harness out with too much force.

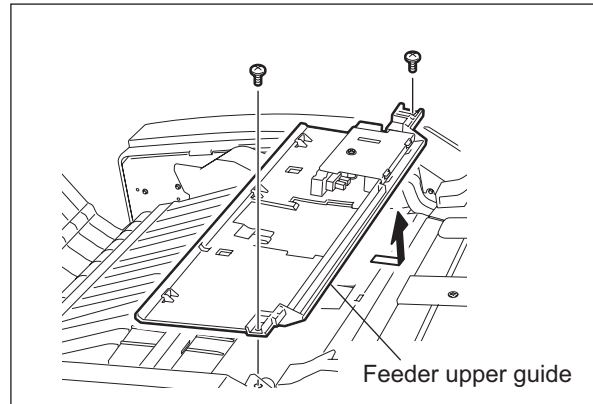


Fig. 4-22

- (3) Remove 2 screws and take off the separation roller holder and separation roller unit.

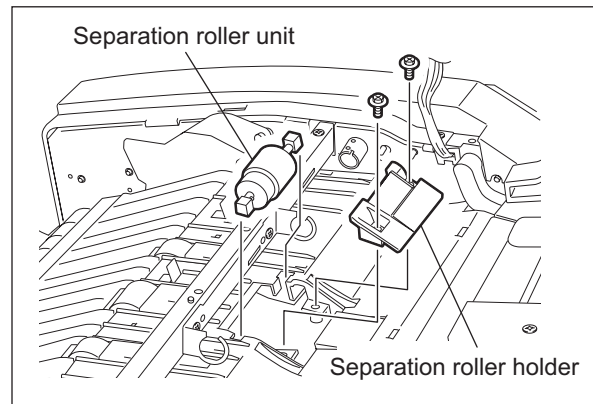


Fig. 4-23

- (4) Remove 1 bushing and clip, and then take off the separation roller.

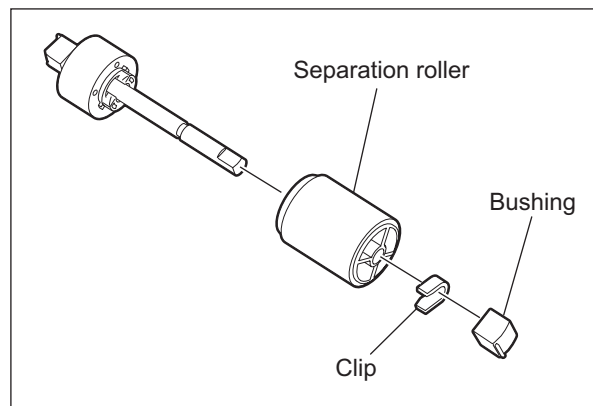


Fig. 4-24

## [E] Feeder lower guide

- (1) Take off the original tray.  
(📖 P. 4-4 "[E] Original tray")
- (2) Take off the paper feeder unit.  
(📖 P. 4-5 "[A] Paper feeder unit")
- (3) Remove 2 screws and take off the stay.

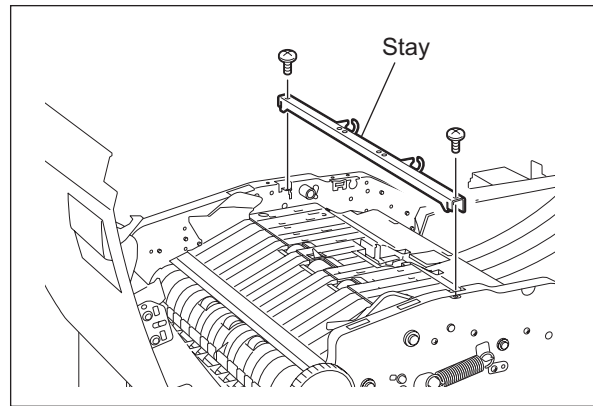


Fig. 4-25

- (4) Take off the jam access guide.

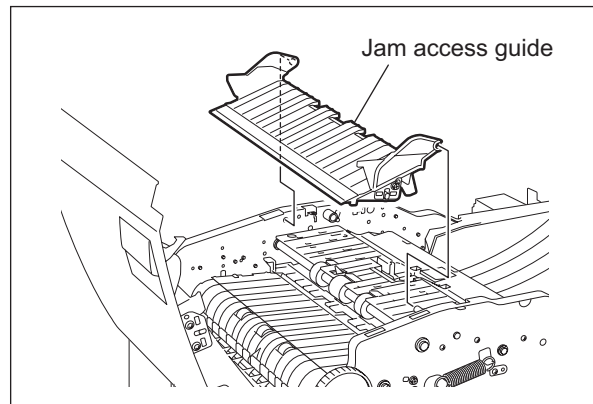


Fig. 4-26

- (5) Remove 4 screws. Disconnect 1 connector and take off the feeder lower guide.

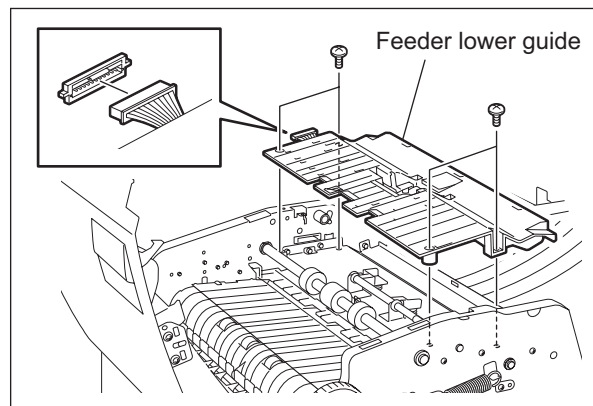




Fig. 4-27

## [F] Registration roller

- (1) Take off the feeder lower guide.  
( P. 4-9 "[E] Feeder lower guide")
- (2) Take off the original feed motor drive section.  
( P. 4-16 "[A] Original feed motor (M1)")
- (3) Remove 1 E-ring and 1 bushing from the front side of the registration roller shaft. Also, remove 1 bushing, 1 pulley, 1 E-ring and 1 bushing from the rear side of the shaft, and then take off the registration roller.

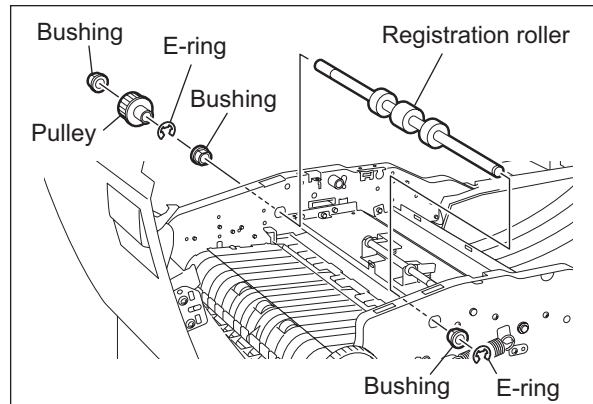




Fig. 4-28

## [G] Exit roller

- (1) Take off the front cover.  
( P. 4-1 "[A] Front cover")
- (2) Take off the original feed motor drive section.  
( P. 4-17 "[B] Original feed motor drive section")
- (3) Remove 1 screw, 1 leaf spring, 1 clip and 1 bushing from the rear side of the exit roller shaft.

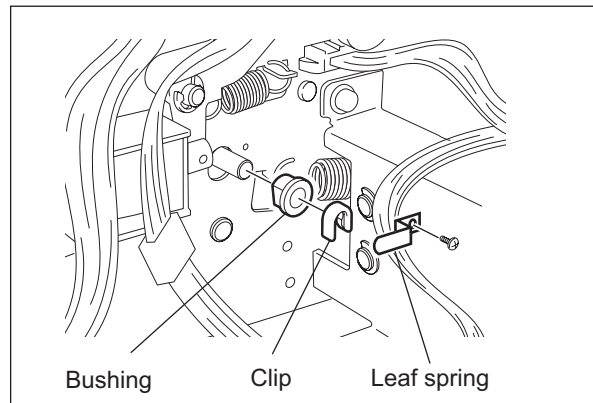


Fig. 4-29

- (4) Remove 1 clip, 1 pulley, 1 pin, timing belt and 1 bushing from the front side of the exit/reverse roller shaft.

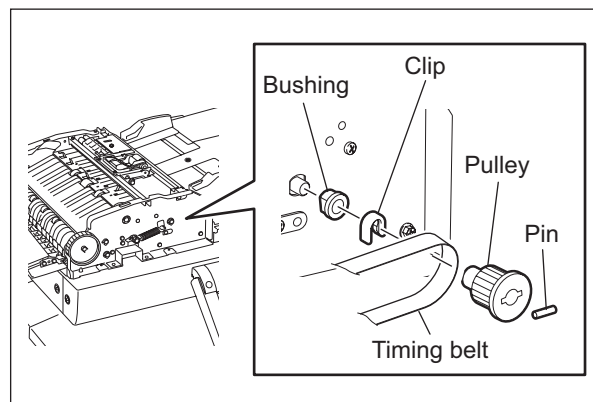
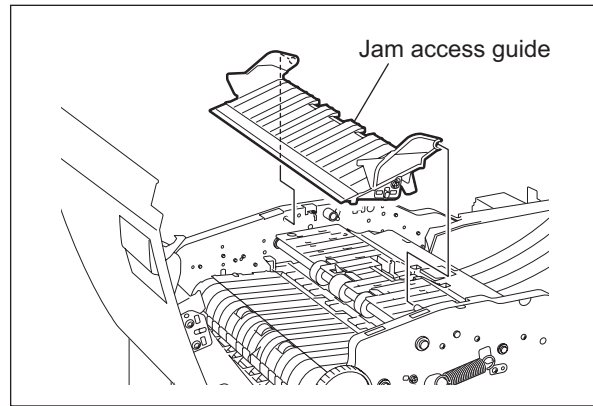


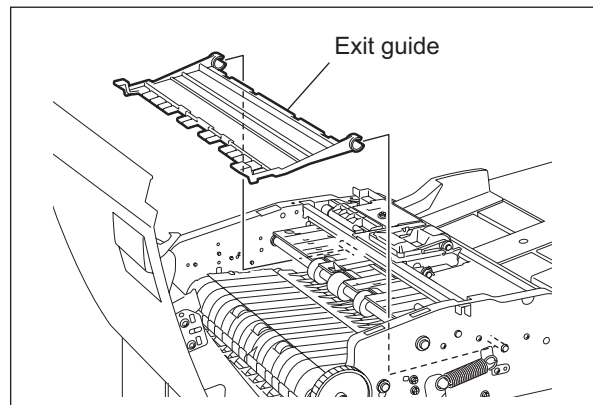
Fig. 4-30

(5) Take off the jam access guide.



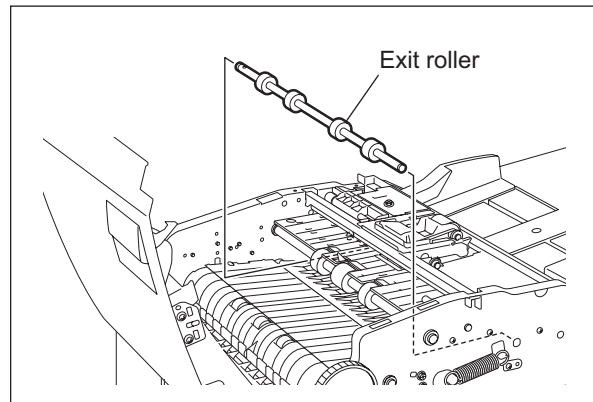
**Fig. 4-31**

(6) Pull out the exit guide.



**Fig. 4-32**

(7) Take off the exit roller.



**Fig. 4-33**

## [H] Pre-reading guide

- (1) Take off the front cover.  
(☞ P. 4-1 "[A] Front cover")
- (2) Take off the rear cover.  
(☞ P. 4-2 "[B] Rear cover")
- (3) Take off the jam access cover.  
(☞ P. 4-2 "[C] Jam access cover")
- (4) Take off the left cover.  
(☞ P. 4-3 "[D] Left cover")
- (5) Remove 1 screw and take off the hinge pin.

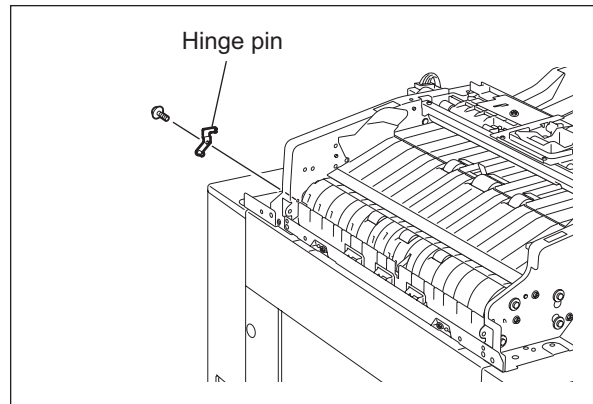


Fig. 4-34

- (6) Disconnect 1 connector. Remove 4 screws and take off the pre-reading guide.

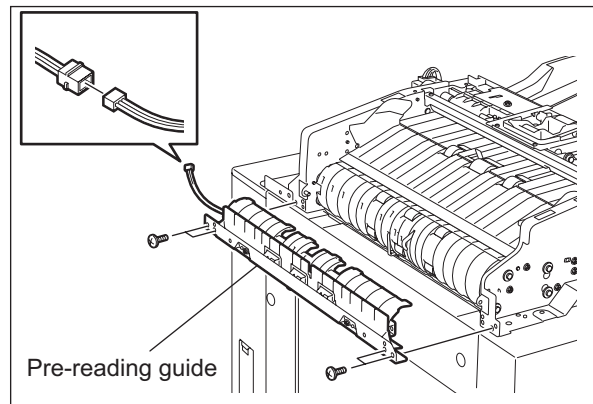


Fig. 4-35

## [I] Intermediate transport roller

- (1) Take off the pre-reading guide.  
(☞ P. 4-12 "[H] Pre-reading guide")
- (2) Take off the read motor drive section.  
(☞ P. 4-18 "[C] Read motor (M2)")
- (3) Remove 1 bushing, 1 E-ring, 1 pulley, 1 flange and 1 bushing from the rear side of the intermediate transport roller shaft.
- (4) Remove 1 bushing from the front side of the intermediate transport roller shaft.
- (5) Take off the intermediate transport roller.

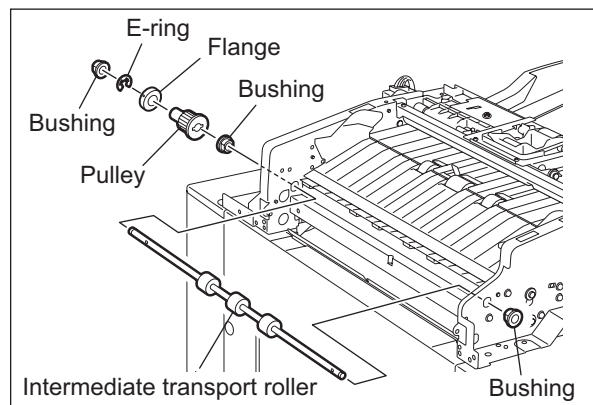




Fig. 4-36

## [J] Pre-reading roller

- (1) Take off the pre-reading guide.  
( P. 4-12 "[H] Pre-reading guide")
- (2) Take off the read motor drive section.  
( P. 4-18 "[C] Read motor (M2)")
- (3) Remove 1 bushing and 1 E-ring from the rear side of the pre-reading roller shaft. Loosen 2 setscrews and take off 1 flange. Then take off 1 pulley and 1 bearing.

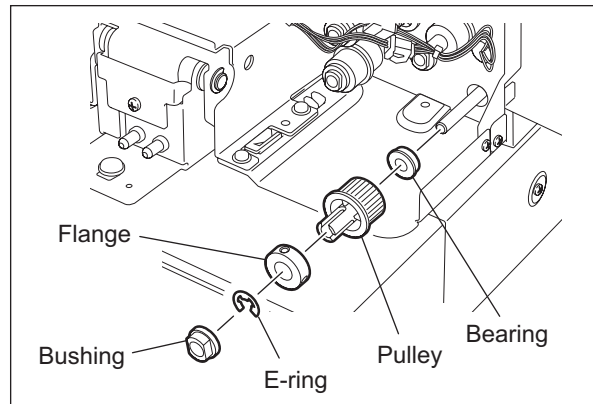


Fig. 4-37

- (4) Remove 1 clip and 1 bushing from the front side of the pre-reading roller shaft.
- (5) Take off the pre-reading roller.

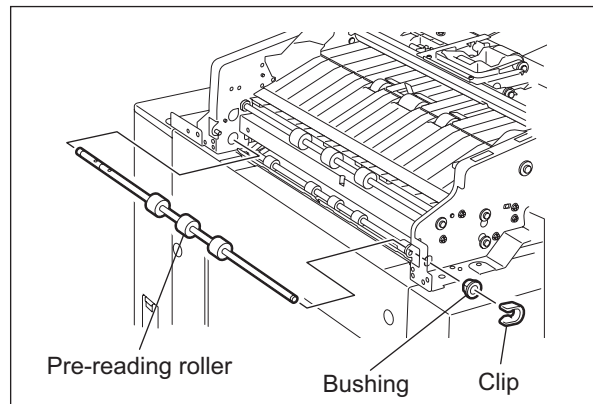



Fig. 4-38

## [K] Post-reading roller

- (1) Take off the pre-reading guide.  
( P. 4-12 "[H] Pre-reading guide")
- (2) Disconnect 1 connector.

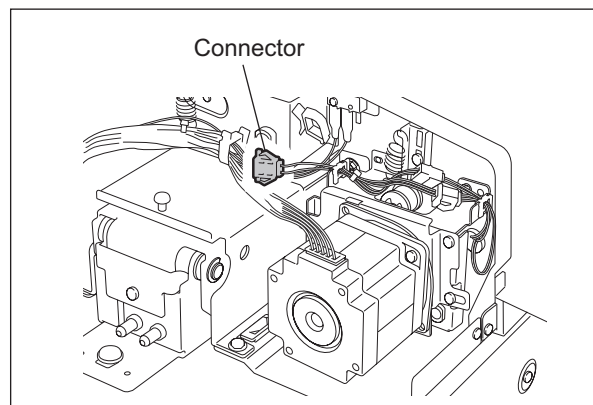
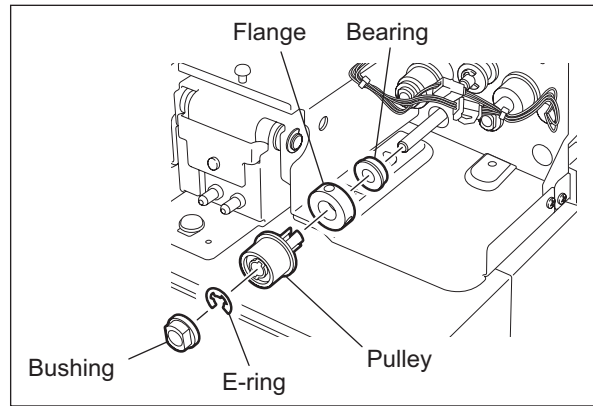


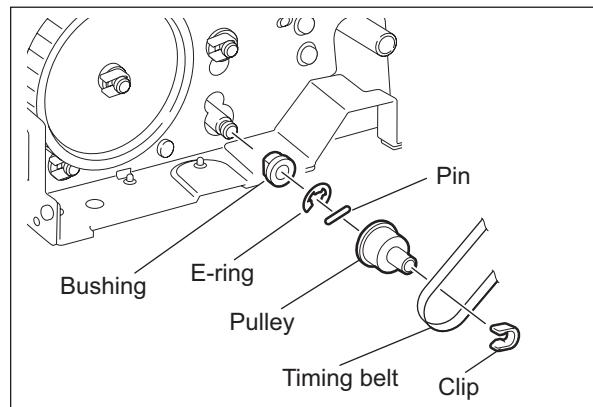
Fig. 4-39

- (3) Take off the read motor drive section.  
(P. 4-19 "[D] Read motor drive section")
- (4) Remove 1 bushing, 1 E-ring and 1 pulley from the rear side of the post-reading roller shaft. Loosen 2 setscrews and take off 1 flange. Take off 1 bearing.



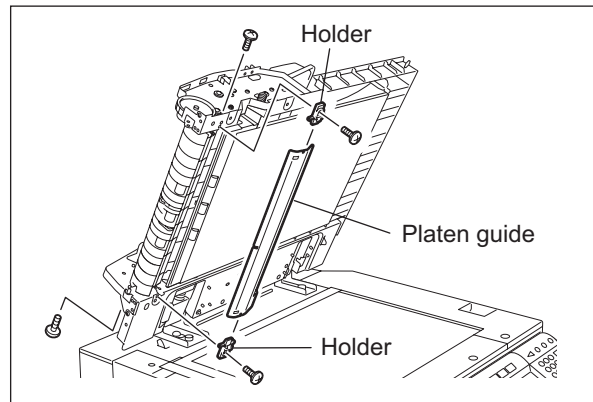
**Fig. 4-40**

- (5) Remove 1 clip, timing belt, 1 pulley, 1 pin, 1 E-ring and 1 bushing from the front side of the post-reading roller shaft.



**Fig. 4-41**

- (6) Open the RADF. Remove 4 screws, take off 2 holders and platen guide.



**Fig. 4-42**



- (7) Remove 2 screws. Open the post-reading lower guide and take off the post-reading upper guide.

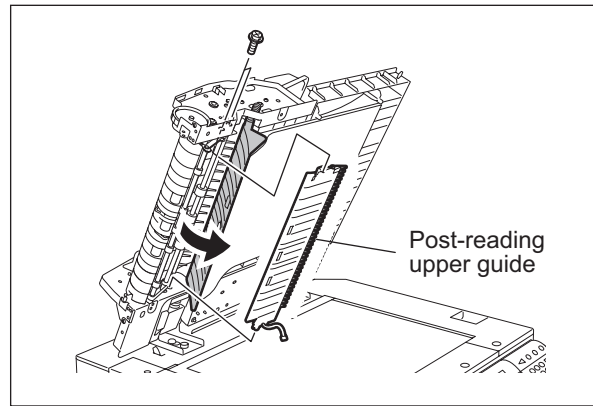


Fig. 4-43

- (8) Take off the post-reading roller.

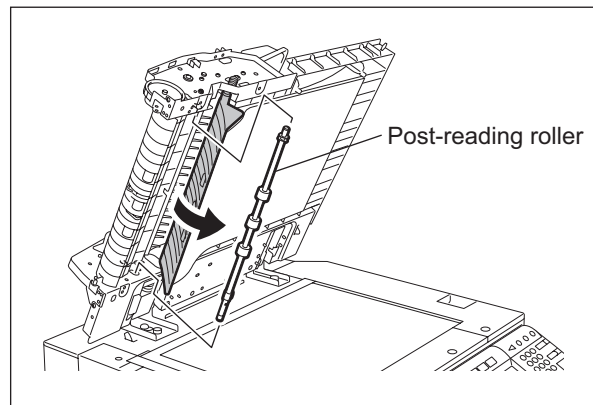



Fig. 4-44

## 4.3 Motor / Motor drive section

### [A] Original feed motor (M1)

- (1) Take off the rear cover.  
( P. 4-2 "[B] Rear cover")
- (2) Disconnect 1 connector, and then remove 1 spring. (Spring: Outside diameter of coil –  $\varnothing 9.6$  mm, acceptable turns of coil – 12 turns)

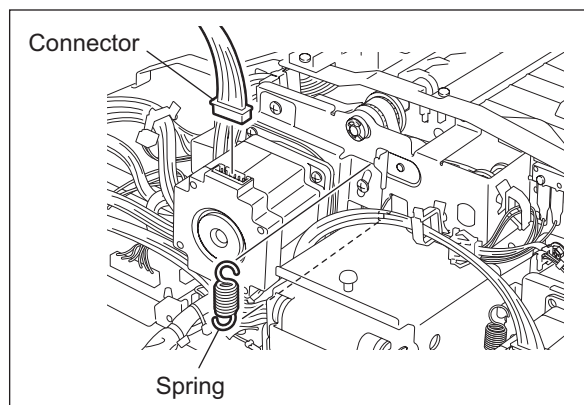


Fig. 4-45

- (3) Remove 3 screws, and then take off the original feed motor with its bracket.

**Note:**

When the unit is being assembled, temporarily tighten the screws removed at step (3) and then attach the spring removed at step (2). Then fully tighten these screws.

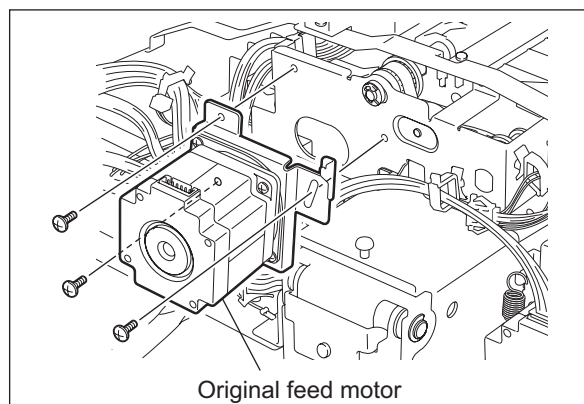


Fig. 4-46

- (4) Remove 2 screws and take off the original feed motor.

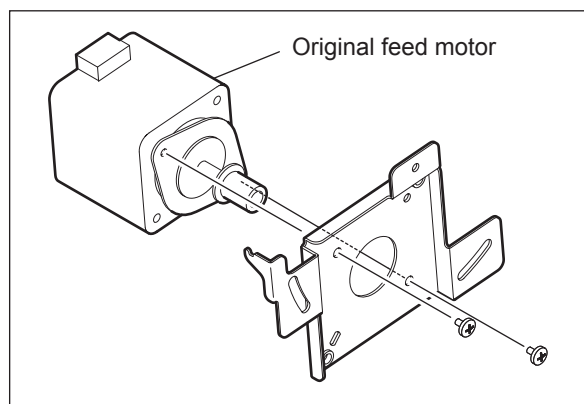

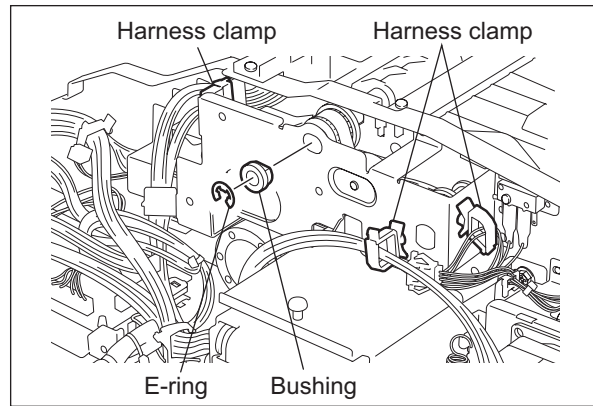


Fig. 4-47

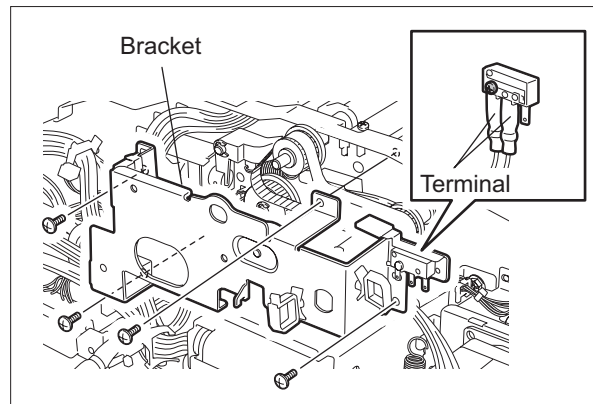
**[B] Original feed motor drive section**

- (1) Take off the the original feed motor.  
( P. 4-16 "[A] Original feed motor (M1)")
- (2) Release the harness from 3 harness clamps.
- (3) Remove 1 E-ring and take off the bushing.



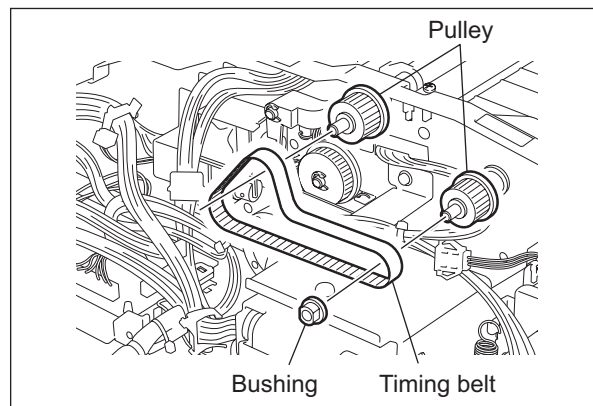
**Fig. 4-48**

- (4) Disconnect 2 terminals of the switch.
- (5) Remove 4 screws, and then take off the bracket.




**Fig. 4-49**

- (6) Take off the timing belt, bushings and 2 pulleys.



**Fig. 4-50**

### [C] Read motor (M2)

- (1) Take off the rear cover.  
( P. 4-2 "[B] Rear cover")
- (2) Disconnect 1 connector, and then remove 1 spring. (Spring: Outside diameter of coil –  $\varnothing 10.2$  mm, active coils – 12.5)

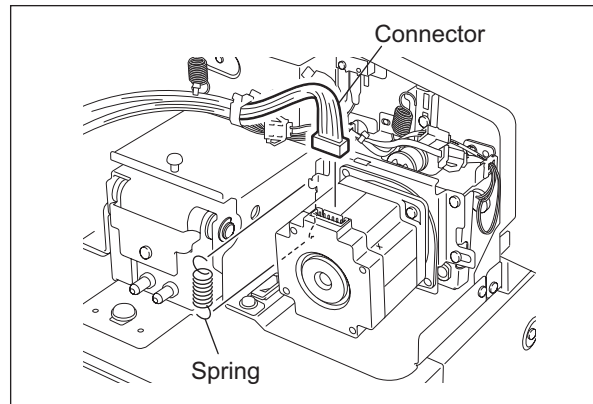


Fig. 4-51

- (3) Remove 3 screws, and then take off the read motor with its bracket.

**Note:**

When the unit is being assembled, temporarily tighten the screws removed at step (3), and then attach the spring removed at step (2). Then fully tighten these screws.

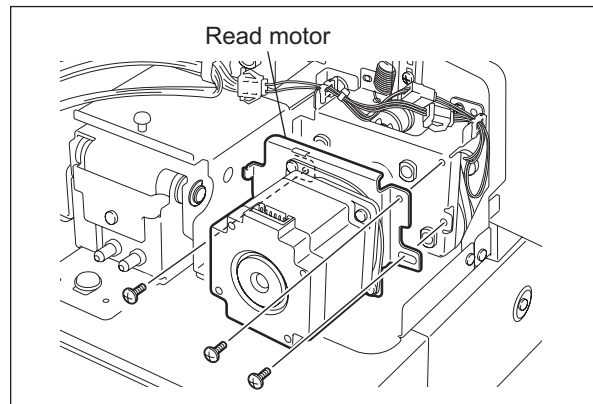


Fig. 4-52

- (4) Remove 2 screws and take off the read motor.

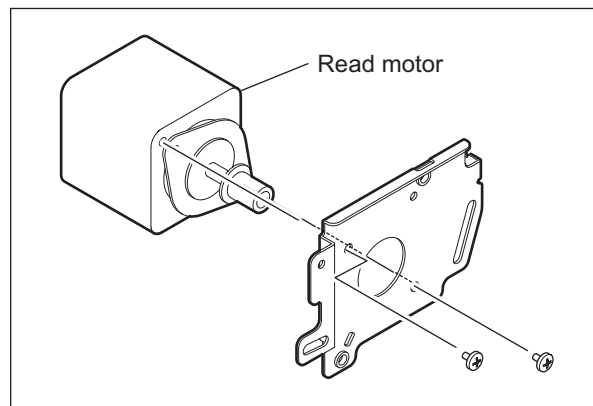

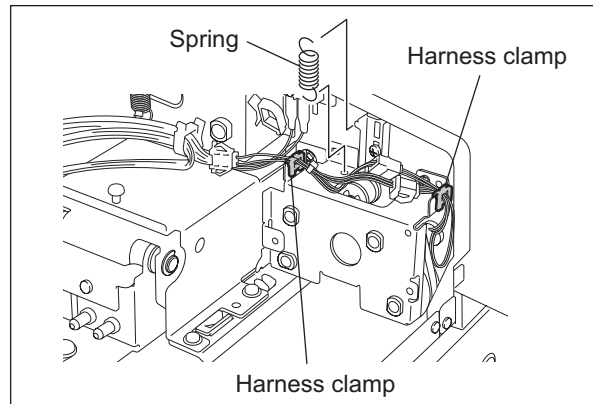


Fig. 4-53

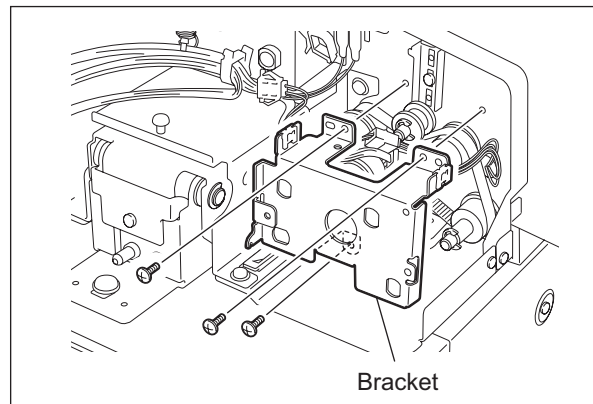
**[D] Read motor drive section**

- (1) Take off the rear motor.  
( P. 4-18 "[C] Read motor (M2)")
- (2) Remove 1 spring. (Spring: Outside diameter of coil – $\varnothing$ 8.8 mm, active coils – 12.5)
- (3) Release the harness from 2 harness clamps.



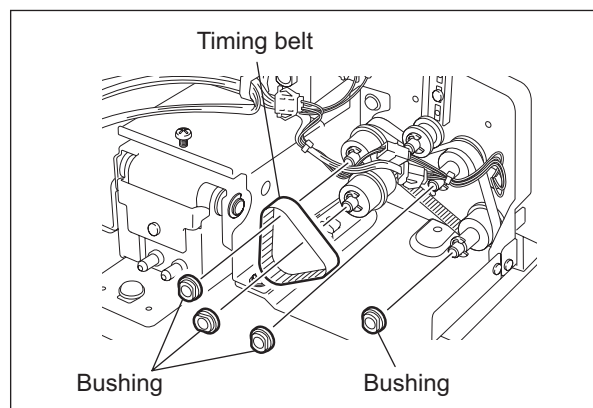
**Fig. 4-54**

- (4) Remove 3 screws and then take off the bracket.



**Fig. 4-55**

- (5) Take off 1 timing belt and 4 bushings.

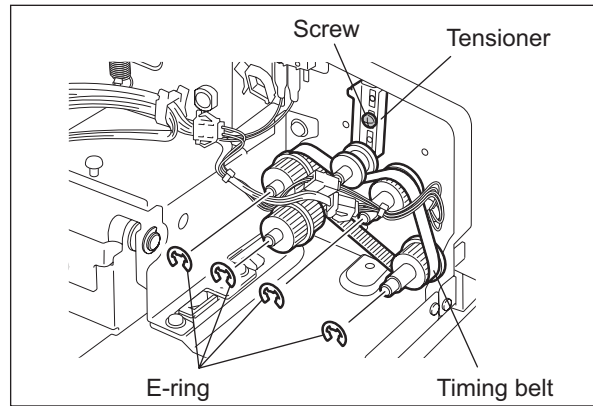


**Fig. 4-56**

- (6) Loosen 1 screw of the belt tensioner.
- (7) Remove the 4 E-rings, and then take off the 4 pulleys and timing belt.

**Note:**

When the unit is being assembled, first install the parts removed at steps (3), (4), (5) and (7), and attach the spring removed at step (2) next. Then tighten the screw loosened at step (6).



**Fig. 4-57**

## 4.4 Solenoid

### [A] Original pickup solenoid (SOL)

- (1) Take off the original feed motor drive section. (P. 4-17 "[B] Original feed motor drive section")
- (2) Disconnect 1 connector. Remove 2 screws and take off the original pickup solenoid with the bracket.

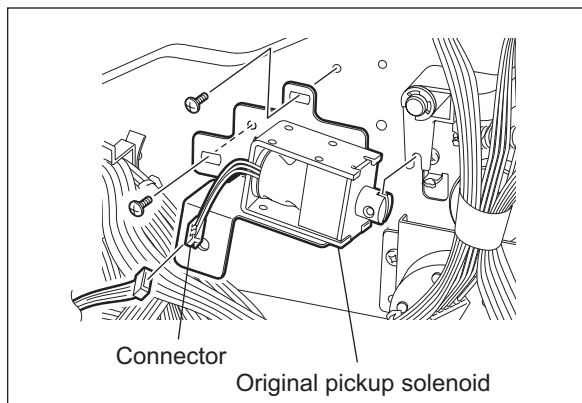


Fig. 4-58

- (3) Remove 2 screws and take off the original pickup solenoid from the bracket.

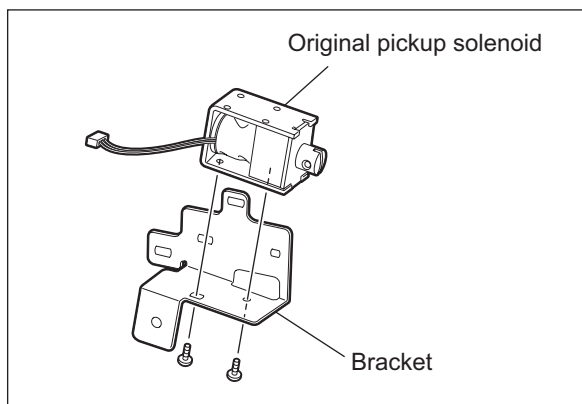


Fig. 4-59

#### Note:

When installing the original pickup solenoid, be sure to align the edge of the original pickup solenoid with the mark-off line on the frame.

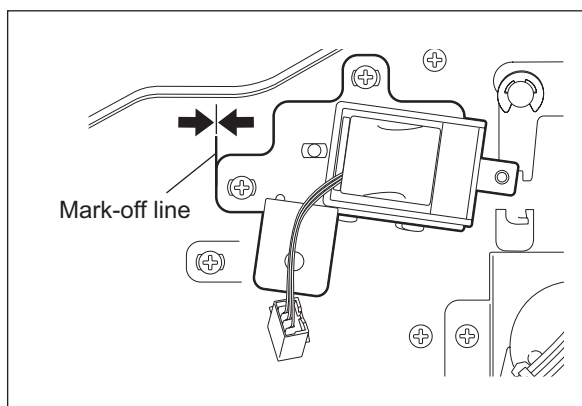



Fig. 4-60

## 4.5 Sensor/switch

### [A] Original tray width sensor (S2)

- (1) Take off the original tray.  
( P. 4-4 "[E] Original tray")
- (2) Remove 3 screws. Release 8 latches and separate the original tray into 2 parts.

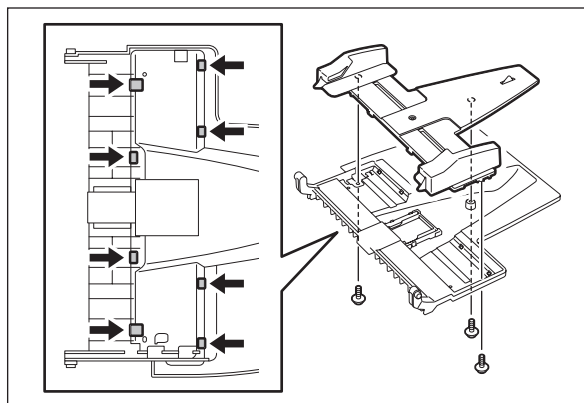


Fig. 4-61

- (3) Remove 1 screw and take off the original tray width sensor.

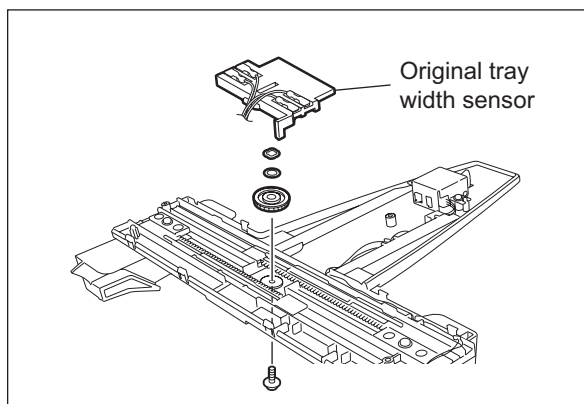



Fig. 4-62

### [B] Original tray sensor (S1)

- (1) Take off the original tray.  
( P. 4-4 "[E] Original tray")
- (2) Remove 3 screws. Release 8 latches and separate the original tray into 2 parts.

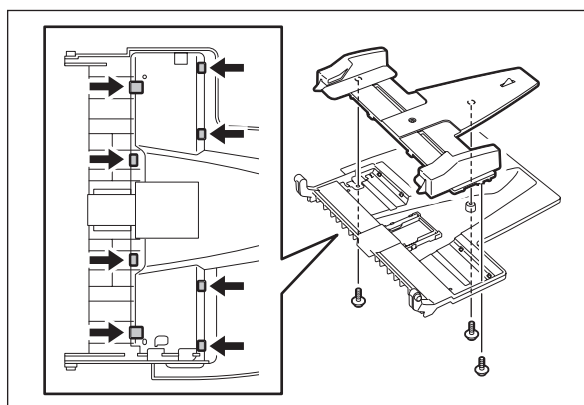


Fig. 4-63



- (3) Remove 2 screws and take off the holder.

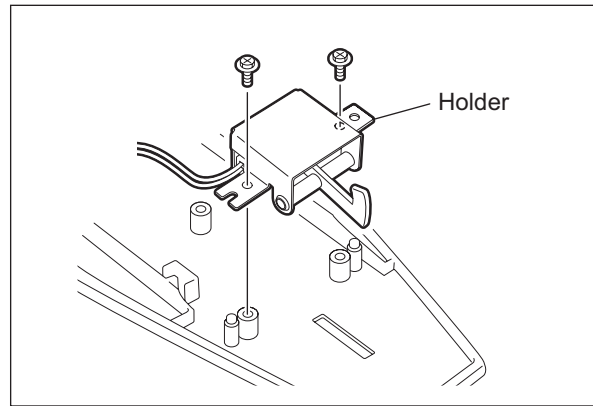


Fig. 4-64

- (4) Release 2 latches and take off the original tray sensor.

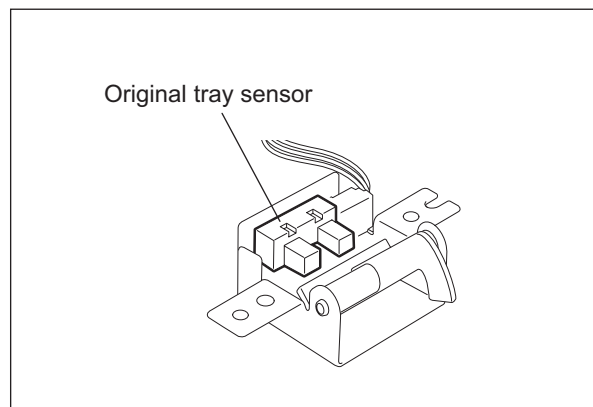


Fig. 4-65

**[C] Jam access cover sensor (S7)**

- (1) Open the jam access cover.  
(2) Remove 1 screw and take off the metal plate cover.

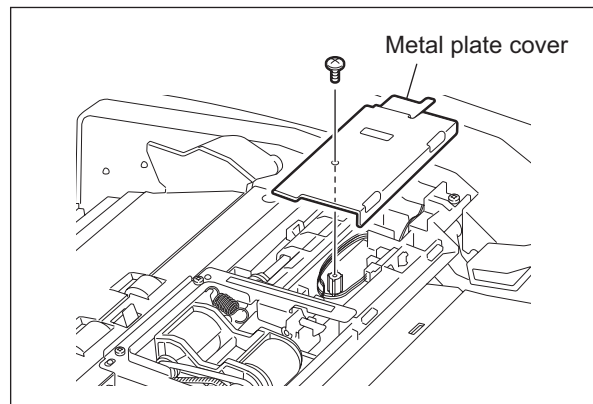


Fig. 4-66

- (3) Disconnect 1 connector. Release 2 latches and take off the jam access cover sensor.

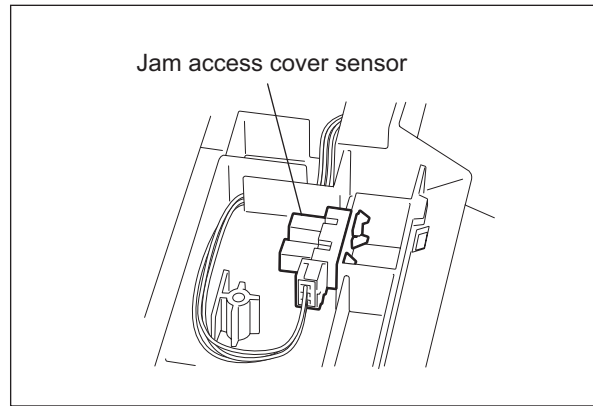


Fig. 4-67

**[D] Original empty sensor (S3)**

- (1) Open the jam access cover.
- (2) Remove 1 screw and take off the metal plate cover.

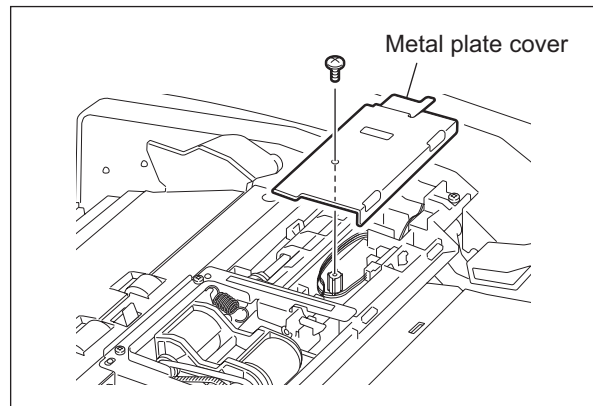


Fig. 4-68

- (3) Remove 2 screws and take off the bracket.

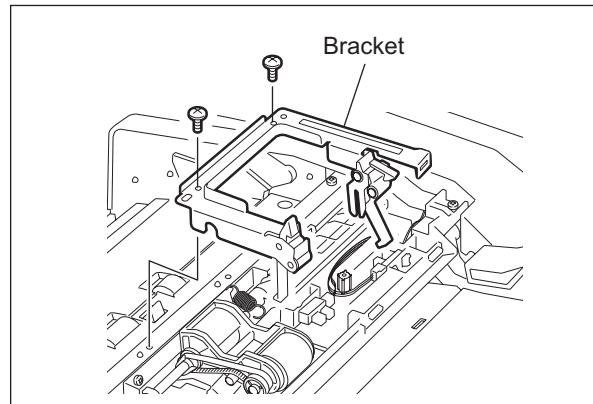


Fig. 4-69

- (4) Disconnect 1 connector. Release 2 latches and take off the original empty sensor.

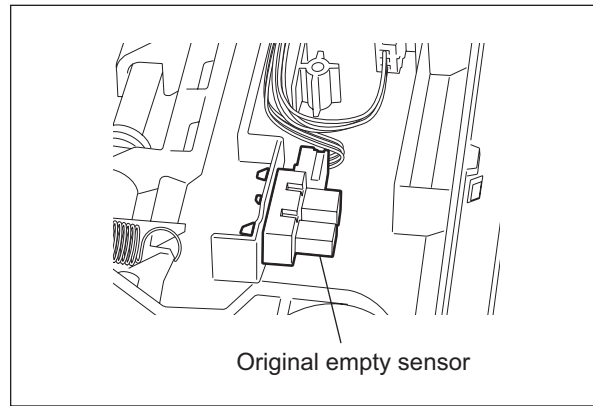



Fig. 4-70

#### [E] Original registration sensor (S4)

- (1) Take off the feeder lower guide.  
( P. 4-9 "[E] Feeder lower guide")
- (2) Disconnect 1 connector. Release 2 latches and take off the original registration sensor.

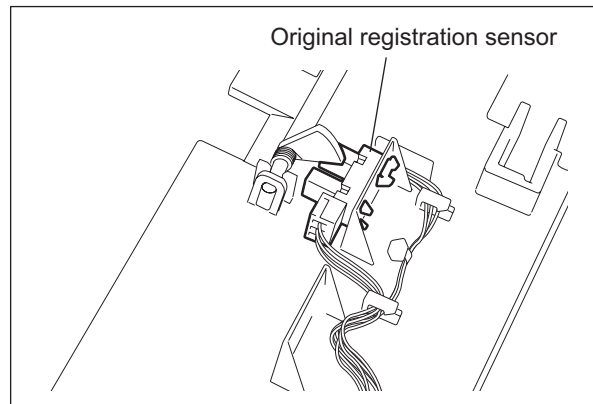



Fig. 4-71

#### [F] Read sensor (S5)

- (1) Take off the pre-reading guide.  
( P. 4-12 "[H] Pre-reading guide")
- (2) Release 2 latches and take off the read sensor from the pre-reading upper guide.

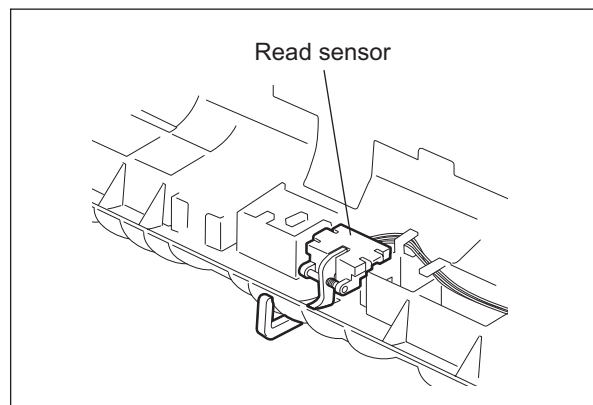

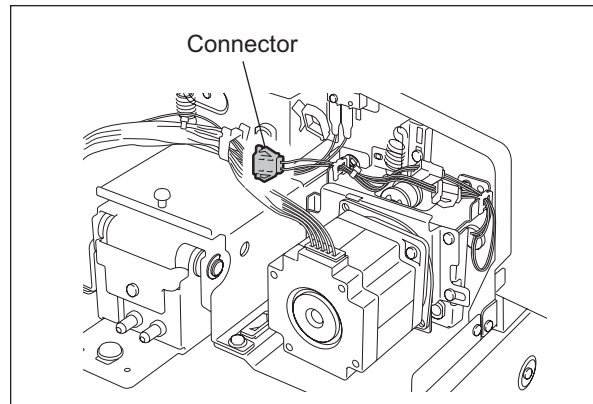


Fig. 4-72

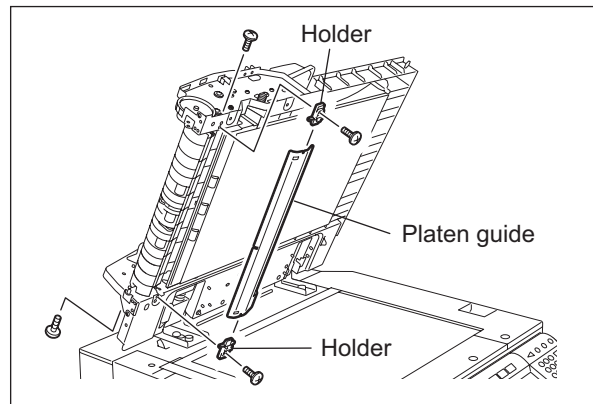
**[G] Original exit/reverse sensor (S6)**

- (1) Take off the pre-reading guide.  
( P. 4-12 "[H] Pre-reading guide")
- (2) Disconnect 1 connector.



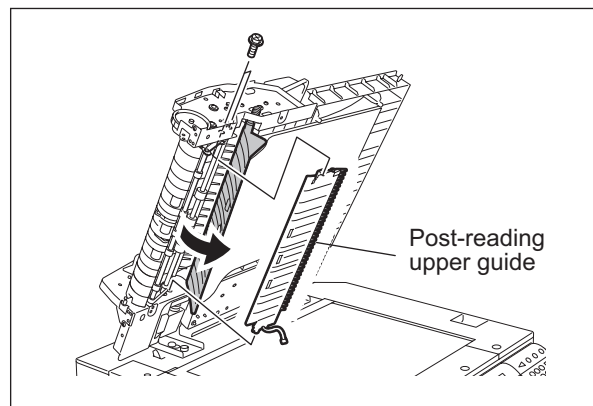
**Fig. 4-73**

- (3) Open the ADF. Remove 4 screws, and then take off 2 holders and platen guide.



**Fig. 4-74**

- (4) Remove 2 screws. Open the post-reading lower guide and take off the post-reading upper guide.



**Fig. 4-75**

- (5) Release 2 latches and take off the Original exit sensor from the post-reading upper guide.

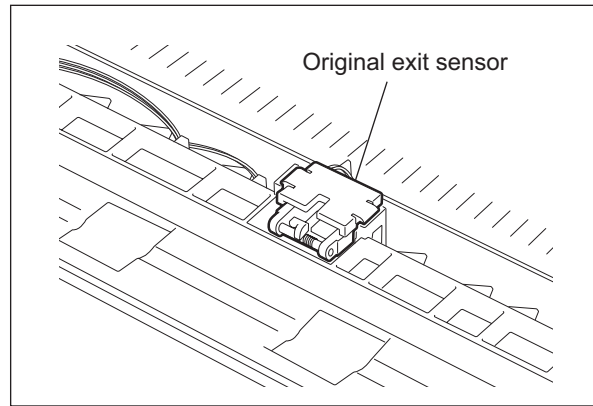


Fig. 4-76

**[H] ADF opening/closing sensor (S8)**

- (1) Take off the rear cover.  
(P. 4-2 "[B] Rear cover")
- (2) Disconnect 1 connector. Release 2 latches and take off the ADF opening/closing sensor.

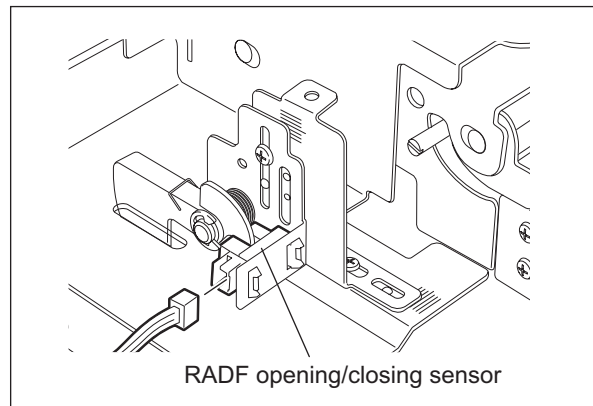


Fig. 4-77

**[I] Jam access cover opening/closing switch (SW)**

- (1) Take off the bracket of the original feed motor drive section.  
(P. 4-17 "[B] Original feed motor drive section")
- (2) Disconnect 2 terminals. Remove 1 screw and take off the jam access cover opening/closing switch.

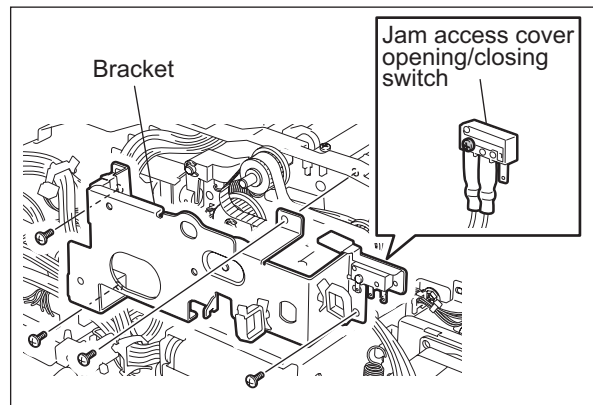



Fig. 4-78

## 4.6 PC Board

### [A] ADF control PC board (ADF board)

- (1) Take off the rear cover.  
( P. 4-2 "[B] Rear cover")
- (2) Disconnect 9 connectors.

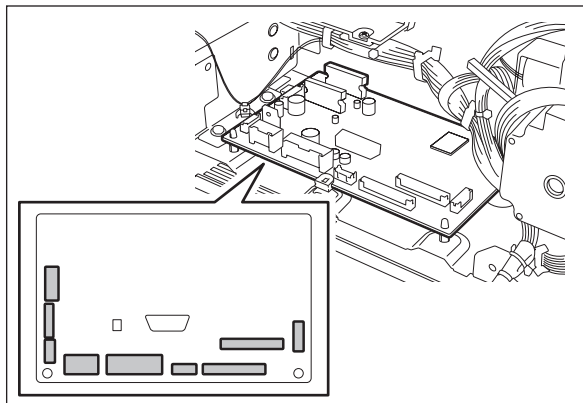


Fig. 4-79

- (3) Release 2 lock supports and 3 edge spacer.  
Take off the ADF board.

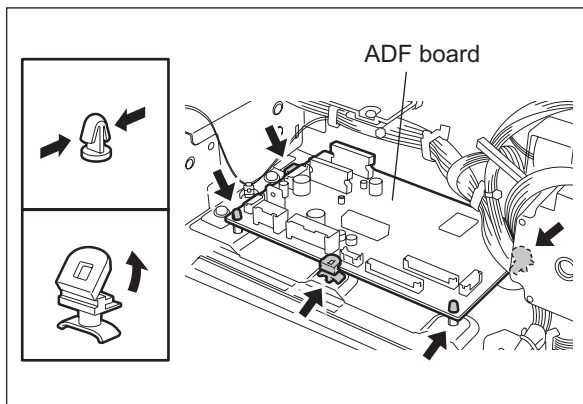


Fig. 4-80

## 4.7 Others

### [A] Hinge stopper

- (1) Remove 1 screw and then take off the hinge stopper.

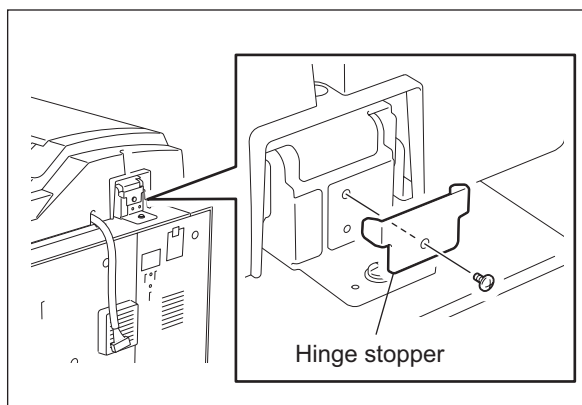


Fig. 4-81

#### Note:

When the hinge stopper is taken off, the opening angle for the RADF becomes approx. 90 degrees. Take off the hinge stopper only when it is needed for installation, maintenance service, etc.

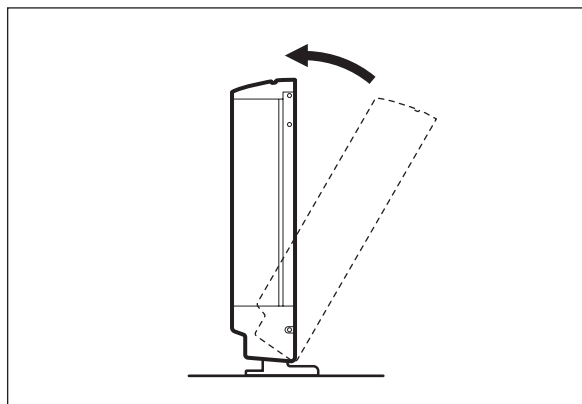


Fig. 4-82





## 5. ADJUSTMENT

### 5.1 Adjustment of Position

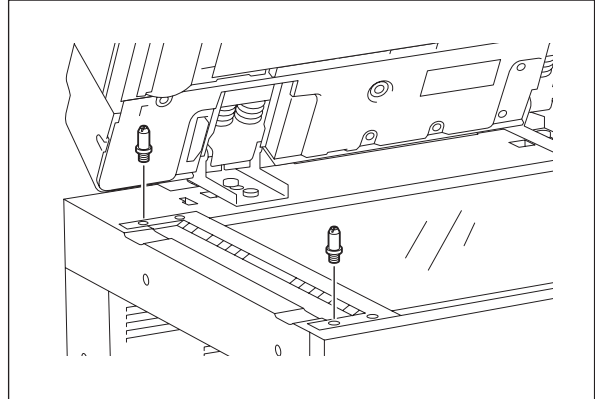
Perform this adjustment when the ADF is not installed in the correct position.

**Note:**

Check if the image adjustment for the equipment is performed properly before this adjustment of the ADF. (See the Service Handbook of the applicable equipment.)

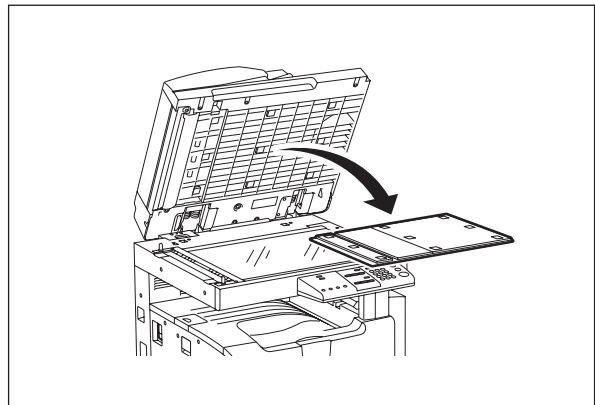
**[A] Checking**

- (1) Open the ADF and install 2 positioning pins (the positioning pins are installed to the back side of the hinge which is on the left side of the ADF).



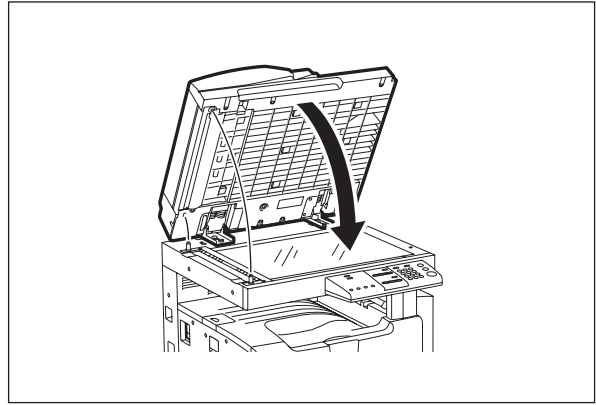
**Fig. 5-1**

- (2) Remove the platen sheet.



**Fig. 5-2**

- (3) Close the ADF and check if the positioning pins fit the holes on the ADF.

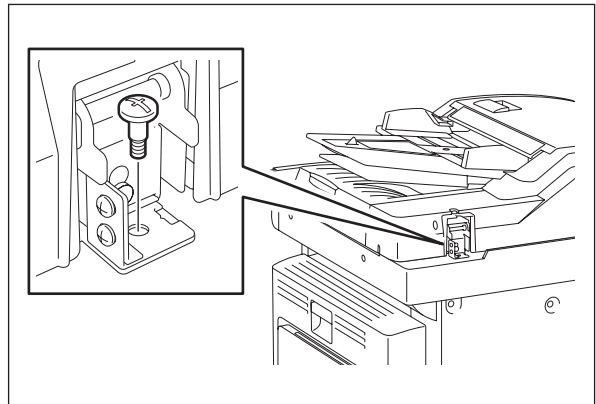


**Fig. 5-3**

**[B] Adjustment**

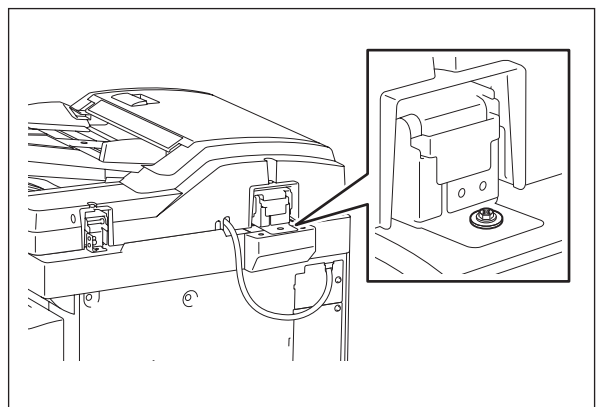
If the pins cannot be fitted into the holes, perform the adjustment according to the following procedure.

- (1) Remove the right-hand hinge screw at the rear side.



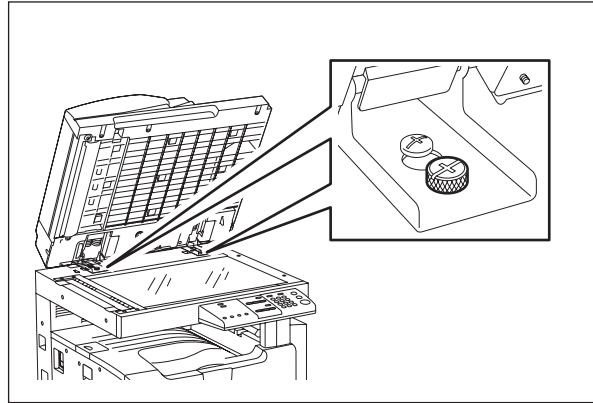
**Fig. 5-4**

- (2) Loosen the left-hand hinge screw at the rear side.



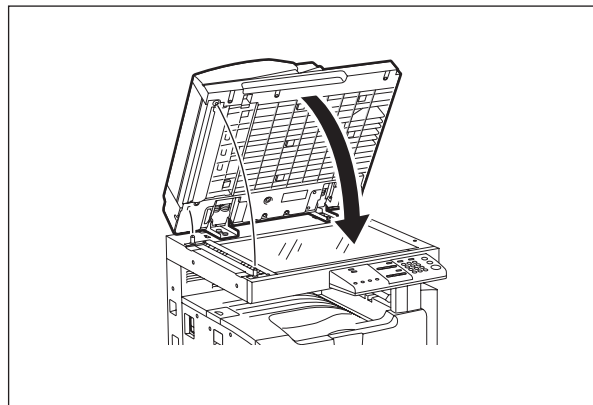
**Fig. 5-5**

- (3) Loosen the hinge screws at the front side.



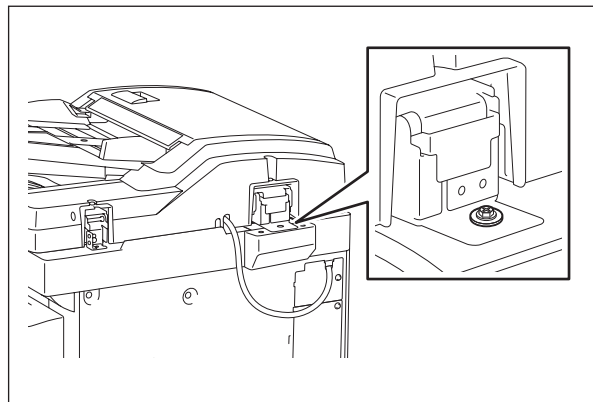
**Fig. 5-6**

- (4) Position the pins with the holes on the ADF by moving it so that the pins fit into the holes when the ADF is closed.



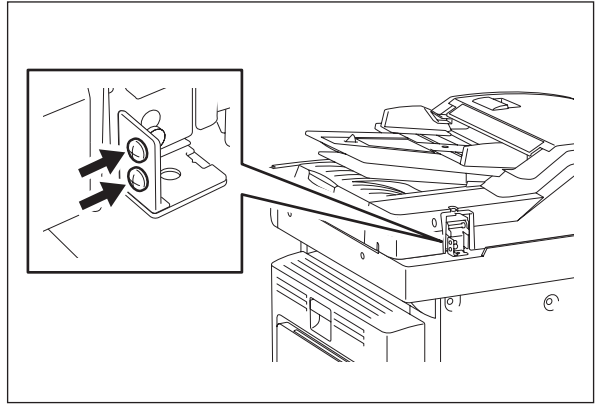
**Fig. 5-7**

- (5) Tighten the left-hand hinge screw at the rear side.



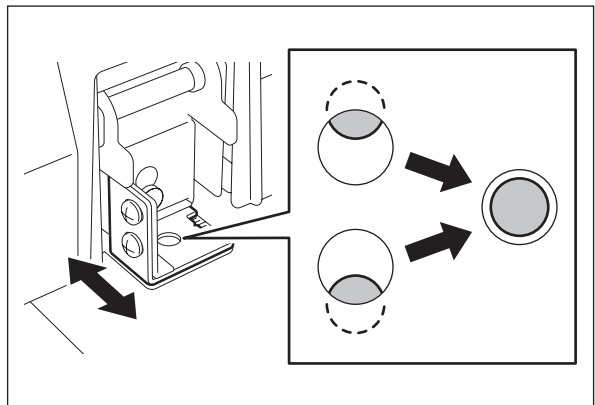
**Fig. 5-8**

- (6) Loosen the hole position adjustment screws on the right hand side.



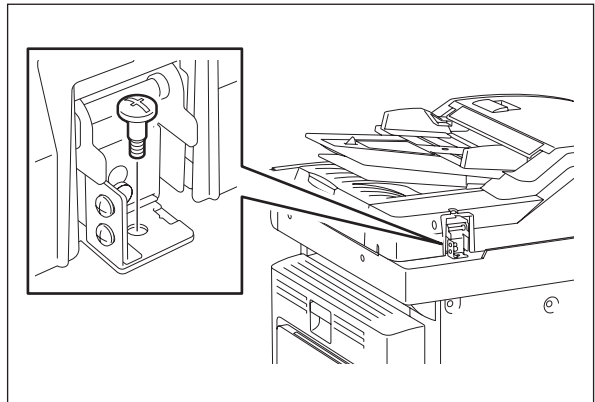
**Fig. 5-9**

- (7) Match the screw hole positions.



**Fig. 5-10**

- (8) Install the right-hand hinge screw at the rear side.



**Fig. 5-11**

(9) Loosen the hinge screws at the front side.

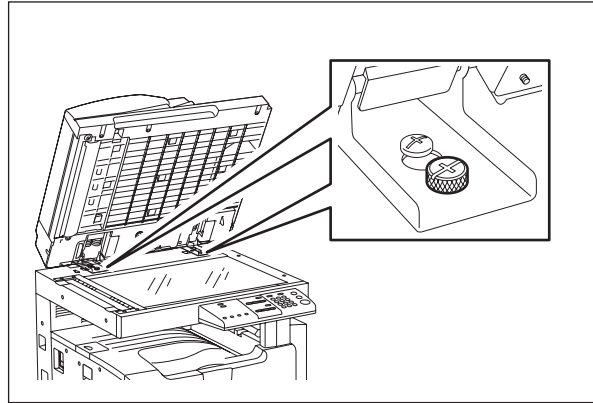


Fig. 5-12

(10) Place the platen sheet on the original glass and align it to the top left corner.  
Close the ADF gently and open it to check if the platen sheet is attached properly.

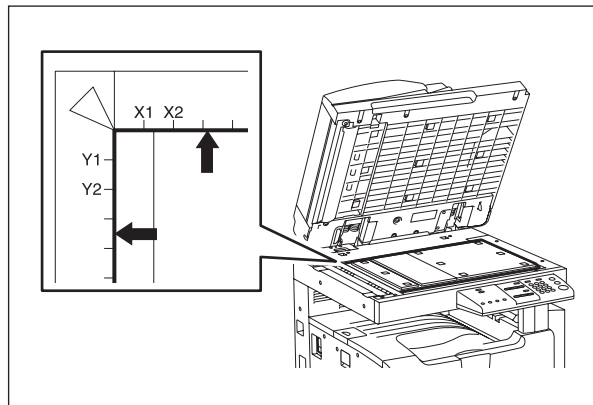


Fig. 5-13

## 5.2 Adjustment of Height

### Note:

Check if the image adjustment for the equipment is performed properly before this adjustment of the ADF. (See the Service Handbook of the applicable equipment.)

### [A] Checking

- (1) Close the ADF.
- (2) Light the exposure lamp.
  - Turn the power ON while pressing [0] and [4] simultaneously.
  - Key in [261], press the [START] button, and then wait until the CIS unit stops.
  - Key in [267] and then press the [START] button. The exposure lamp is turned ON for a given length of time.
- (3) Visually check the gap between platen guide holder "A" and upper surface of the original glass "B" from the left hand side of the equipment. If the value is not within the tolerance, perform the adjustment according to the following procedure.

[Tolerance of the gap]

Rear side: 0 - 0.2 mm

Front side: 0 mm

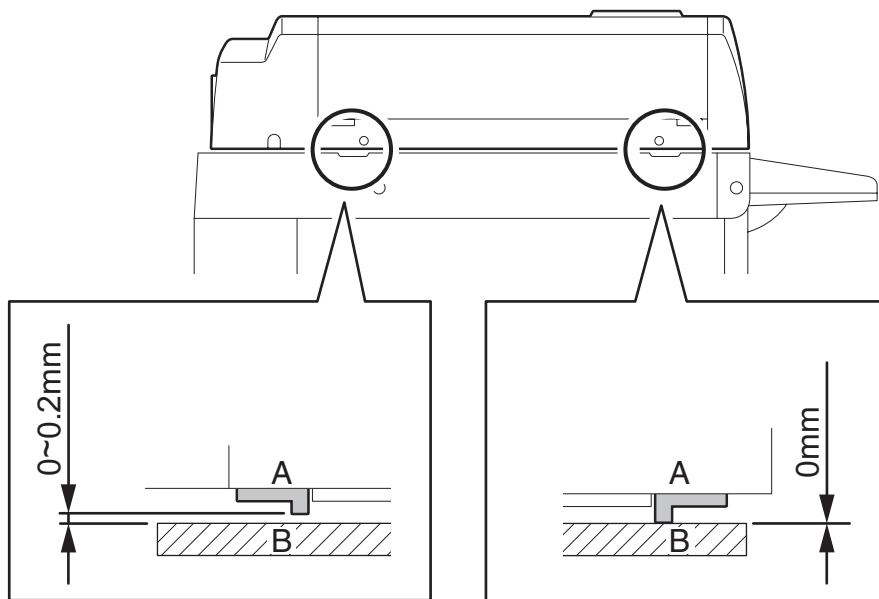
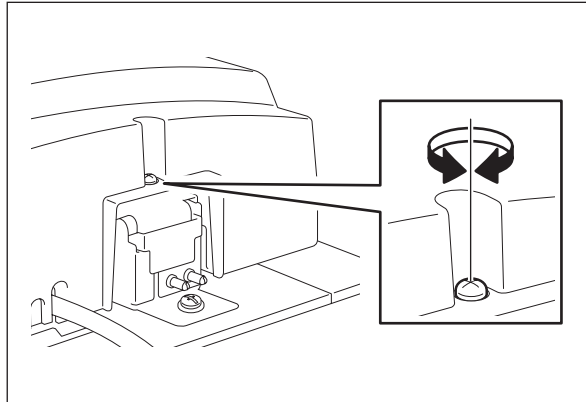


Fig. 5-14

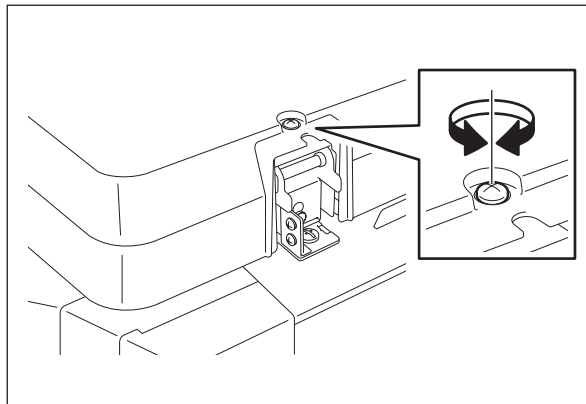
**[B] Adjustment**

- (1) Close the ADF.
  - (2) Adjust it by turning the adjustment screws on the hinges.
    - Adjust the height on the rear side by means of the screw on the hinge on the feed side of the ADF.
- Turn it clockwise ..... Heightened  
Turn it counterclockwise ..... Lowered



**Fig. 5-15**

- Adjust the gap on the rear side by means of the screw on the hinge on the feed side of the ADF.
- Turn it clockwis ..... Lowered  
Turn it counterclockwise ..... Heightened



**Fig. 5-16**

## 5.3 Adjustment of Skew

### Note:

Check if the image adjustment for the equipment is performed properly before this adjustment of the RADF. (See the Service Handbook of applicable equipment.) Also, the RADF position and height shall be adjusted properly.

### [A] Checking

Check the image using the chart (original) with vertical and horizontal lines in the following procedure.

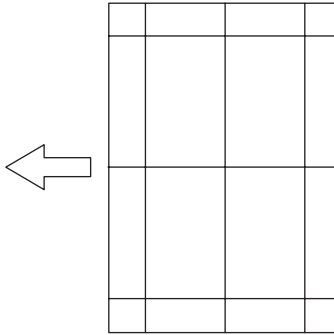


Fig. 5-17 Chart (Original)

- (1) Place the chart provided as an original with its face up on the original tray of the ADF, select [1 Sided -> 1 Sided] and press the [START] button.
- (2) Superimpose the chart on the copy and check the inclination of the copy image.

### [B] Adjustment

- (1) Shift the aligning plate with the scale as the guide shown in the figure below to adjust the skew.

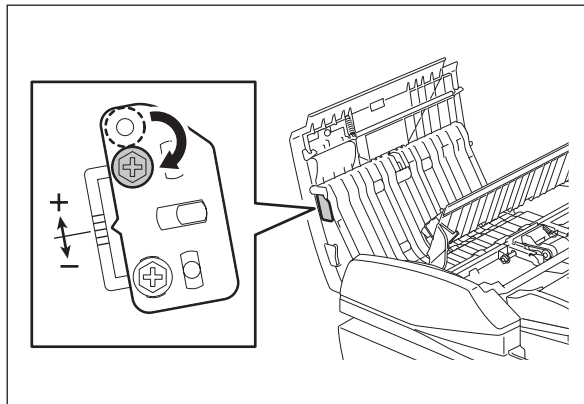
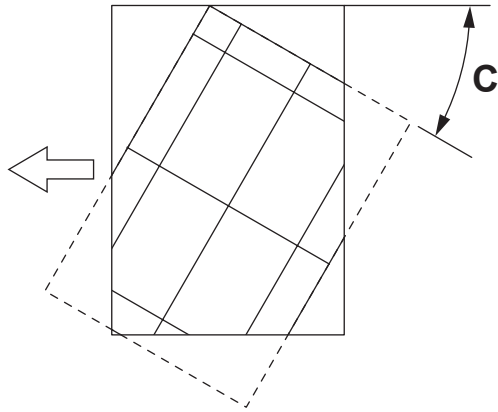


Fig. 5-18

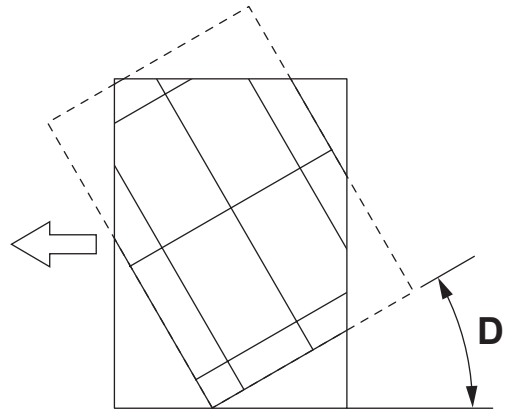


(2) If the image skew is "C" as shown in the figure below, shift the aligning plate in the direction of "+", and if "D", shift it to "-".



**Fig. 5-19**

Shift the aligning plate in the direction of "+".



**Fig. 5-20**

Shift the aligning plate in the direction of "-".

## 5.4 Adjustment of the Leading Edge Position

### Note:

Check if the image adjustment for the equipment is performed properly before this adjustment of the ADF. (See the Service Handbook of applicable equipment.) Also, the ADF position and height shall be adjusted properly.

### [A] Checking

Check the image using the chart (original) with vertical and horizontal lines in the following procedure.

- (1) Place the chart provided as an original with its face up on the original tray of the ADF, select [1 Sided -> 1 Sided] and press the [START] button.
- (2) Superimpose the chart on the copy and check the leading edge E of the chart and F of the copy.

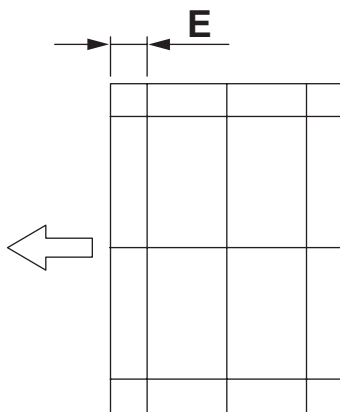


Fig. 5-21 Chart (Original)

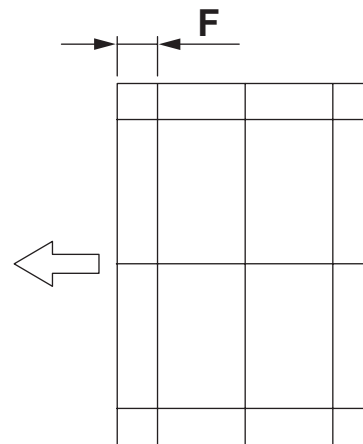


Fig. 5-22 Copy

### [B] Adjustment

- (1) Turn the power ON while pressing [0] and [5] simultaneously, key in [365] and then press the [START] button.
- (2) Enter the value.
  - If the leading edge (F) margin of the copy image is larger than the (E) margin of the chart, enter a value smaller than the current one.

### Note:

Changing one value shifts the copy image by 0.2 mm.

- If the leading edge (F) margin of the copy image is smaller than the (E) margin of the chart, enter a value larger than the current one.

### Note:

Changing one value shifts the copy image by 0.2 mm.

- (3) Press the [INTERRUPT] button.

## 5.5 Adjustment of Horizontal Position

### Note:

Check if the image adjustment for the equipment is performed properly before this adjustment of the ADF. (See the Service Handbook of applicable equipment.) Also, the ADF position and height shall be adjusted properly.

### [A] Checking

Check the image using the chart (original) with a center line in the following procedure.

- (1) Place the chart provided as an original with its face up on the original tray of the ADF.
- (2) Press the [START] button.
- (3) Fold the copy in half and check if the center line is misaligned.

### [B] Adjustment

- (1) Turn the power ON while pressing [0] and [5] simultaneously.
- (2) Key in [358] and then press the [START] button.
  - If the center line of the copy image is shifted to the front side of the equipment, enter a value larger than the current one.

### Note:

Changing one value shifts the copy image by 0.042 mm.

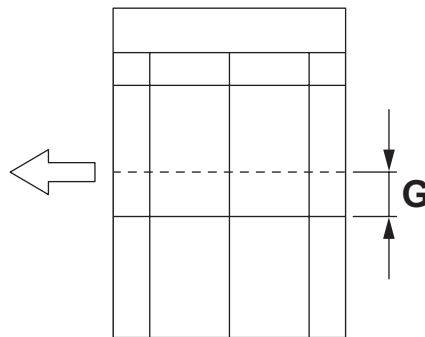


Fig. 5-23

- If the center line of the copy image is shifted to the rear side of the equipment, enter a value smaller than the current one.

### Note:

Changing one value shifts the copy image by 0.042 mm.

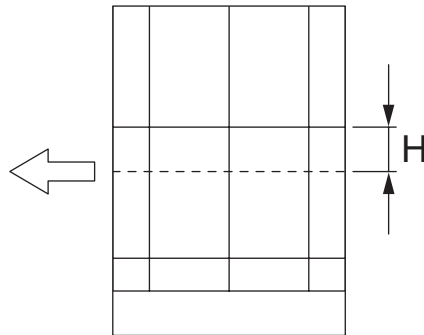


Fig. 5-24

- (3) Press the [INTERRUPT] button.

## 5.6 Adjustment of Copy Ratio

### Note:

Check if the image adjustment for the equipment is performed properly before this adjustment of the ADF. (See the Service Handbook of applicable equipment.) Also, the ADF position and height shall be adjusted properly.

### [A] Checking

Check the image using the chart (original) with vertical and horizontal lines in the following procedure.

- (1) Place the chart provided as an original with its face up on the original tray of the ADF.
- (2) Press the [START] button.
- (3) Superimpose the chart on the copy and check the image dimension "l".

### [B] Adjustment

- (1) Turn the power ON while pressing [0] and [5] simultaneously.
- (2) Key in [357] and then press the [START] button.
  - If the copy image dimension "l" is larger than the chart dimension, enter a value smaller than the current one.
  - If the copy image dimension "l" is smaller than the chart dimension, enter a value larger than the current one.

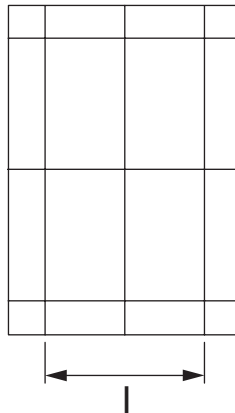


Fig. 5-25

- (3) Press the [INTERRUPT] button.

# 5.7 Adjustment of ADF Opening/Closing Sensor

Adjust the bracket position so that the sensor is turned ON when the height "A" becomes 100 mm or less (within the empty weight falling limit).

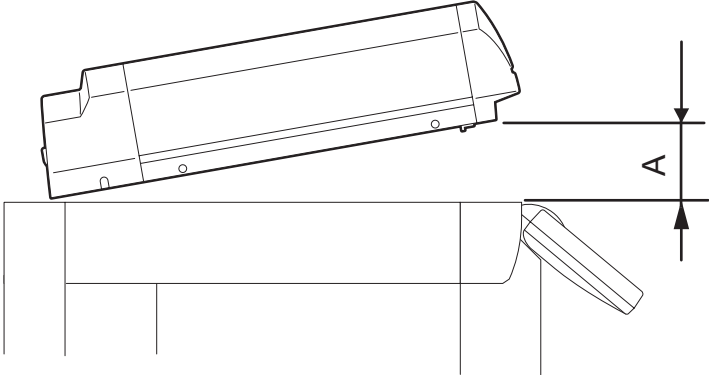


Fig. 5-26

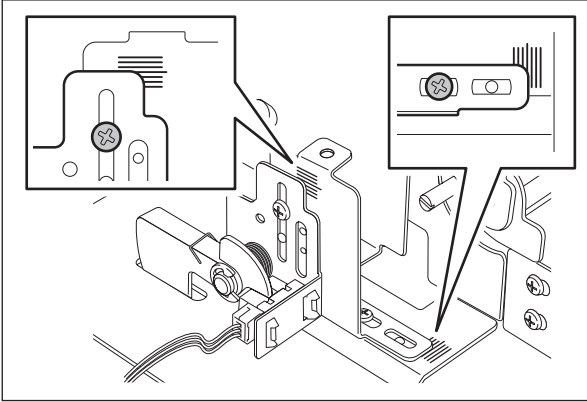


Fig. 5-27



## 6. TROUBLESHOOTING

### 6.1 Troubleshooting for Mechanical Errors

- 1) Multiple originals are transported simultaneously  
Original abnormally curled or folded?  
↓ YES→ Flatten the original and set it again  
NO  
Separation roller is dirty?  
↓ YES→ Clean the roller with alcohol  
NO  
Replace the separation rollers with new ones
  
- 2) Original is not transported to registration roller  
Original thicker than specified?  
↓ YES→ Use originals with permissible thickness.  
↓ Place thick originals manually on the platen cover to make a copy  
NO  
Pickup roller and feed roller are dirty?  
↓ YES→ Clean the rollers with alcohol  
NO  
Transport power of pickup roller and feed roller is weak?  
↓ YES  
Replace the rollers with new ones
  
- 3) Leading edge of original is skewed  
Front and rear protrusions at bottom of ADF are out of contact with glass?  
↓ YES→ Adjust the height of the left hinge  
NO  
Transport rollers are dirty?  
↓ YES→ Clean the rollers with alcohol  
NO  
Is the right hinge out of place?  
↓ YES  
Make a copy and adjust the position of the hinge
  
- 4) Edges of original and copied image are not aligned  
Width between slides too wide compared to that of original?  
↓ YES→ Move the slides so that they contact the edges of the original  
NO  
Check the scanner adjustment
  
- 5) Black streaks appear on copied image  
ADF original glass is dirty?  
↓ YES→ Clean the glass with a dry/squeezed cloth  
NO  
Check the scanner unit

## 6.2 Troubleshooting for Electrical Errors

- 1) ADF does not work (except in the case of a paper jam or when the cover is open)  
Interface harness connected properly?  
↓ NO→ Connect the harness properly or replace it  
YES  
DC+5V supplied to CN70-2, 3pin?  
↓ NO→ Connect the harness properly or replace it  
YES  
DC+24V supplied to CN70-6, 7pin?  
↓ NO→ Connect the harness properly or replace it  
YES  
DC+24V supplied to CN72-4pin?  
↓ NO→ Check or replace the jam access cover switch  
YES  
Empty sensor is ON when there is paper?  
↓ NO→ Check or replace the empty sensor  
YES  
Check or replace the ADF board
  
- 2) Abnormality of motor  
Power supplied and drives signals to connector of motor?  
↓ NO→ Check or replace motor  
YES  
There is no mechanical overloading at the motor and the drive system is correct? (Belt tension etc.)  
↓ NO→ Check or replace motor harness  
YES  
Check or replace the RADF board
  
- 3) Communication error  
Interface cable normal?  
↓ NO→ Replace the interface cable  
YES  
Check or replace the ADF board and check the equipment
  
- 4) Size detection error  
Is the sensor harness normal, and is it connected to the connector (CN73) properly?  
↓ NO→ Connect the harness to the connector properly or replace it.  
YES  
Are the original tray width sensor and original tray sensor normal?  
↓ NO→ Check the original tray width sensor and original tray sensor or replace them.  
YES  
Check the ADF board or replace it.



## 7. MAINTENANCE AND REWRITING ROM

### 7.1 Periodic Maintenance

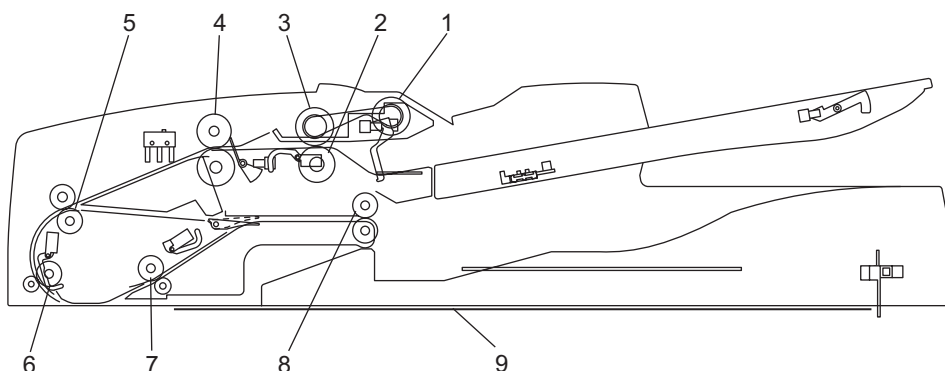


Fig. 7-1

Symbols used in the checklist

Cleaning	Lubrication/Coating	Replacement	Operation check
A: Clean with alcohol B: Clean with soft pad, cloth or vacuum cleaner	L: Launa 40 SI: Silicon oil W: White grease (Molykote X5-6020) AV: Alvania No.2	The number of sheets consumed before replacement (Value x 1,000). R: Replace if deformed or damaged	O: After cleaning or replacement, confirm there is no problem

Preventive Maintenance Checklist

**Note:**

Page-Item (P-I) is described in the column of the Parts list.

Item to check	Cleaning	Lubrication/Coating	Replacement (x1,000)	Operation check	Parts list (P-I)	Remarks
1 Pickup roller	A		90		5-1	
2 Separation roller	A		90		4-10	
3 Feed roller	A		90		5-1	
4 Registration roller	A					
5 Intermediate transfer roller	A					
6 Front read roller	A					
7 Rear read roller	A					
8 Exit/reverse roller	A					
9 Platen sheet	B or A					

## 7.2 Rewriting ROM (Firmware Updating)

It is feasible to update the firmware automatically by connecting the download jig to the PC board and turning the power of the equipment ON. The download jig K-PWA-DLM-320 is used.

< Procedure >

- (1) Turning OFF the power of the equipment and take off the ADF rear cover.
  - (2) Connect the download jig with the connector (CN81) on the PC board.
  - (3) While pressing [0] and [8] simultaneously, turn ON the power. (rewriting data starts)
  - (4) During the data is rewritten, the LED on the download jig lights. When the data rewriting is completed, the LED blinks slowly (at an interval of 0.8 sec.). If the LED blinks fast (at an interval of 0.1 sec.), the rewriting has been failed.
  - (5) Turn OFF the power of the equipment and remove the download jig.
  - (6) Install the ADF rear cover.
- \* If rewriting data is failed, turn OFF the power and repeat the procedure.

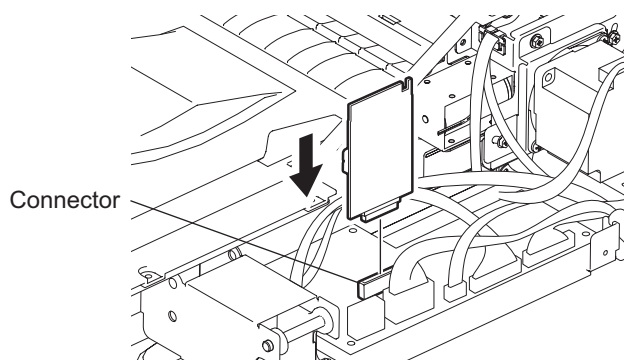


Fig. 7-2

## 8. CIRCUIT DIAGRAM / HARNESS DIAGRAM

### 8.1 Assembly of PC Board

- Component side

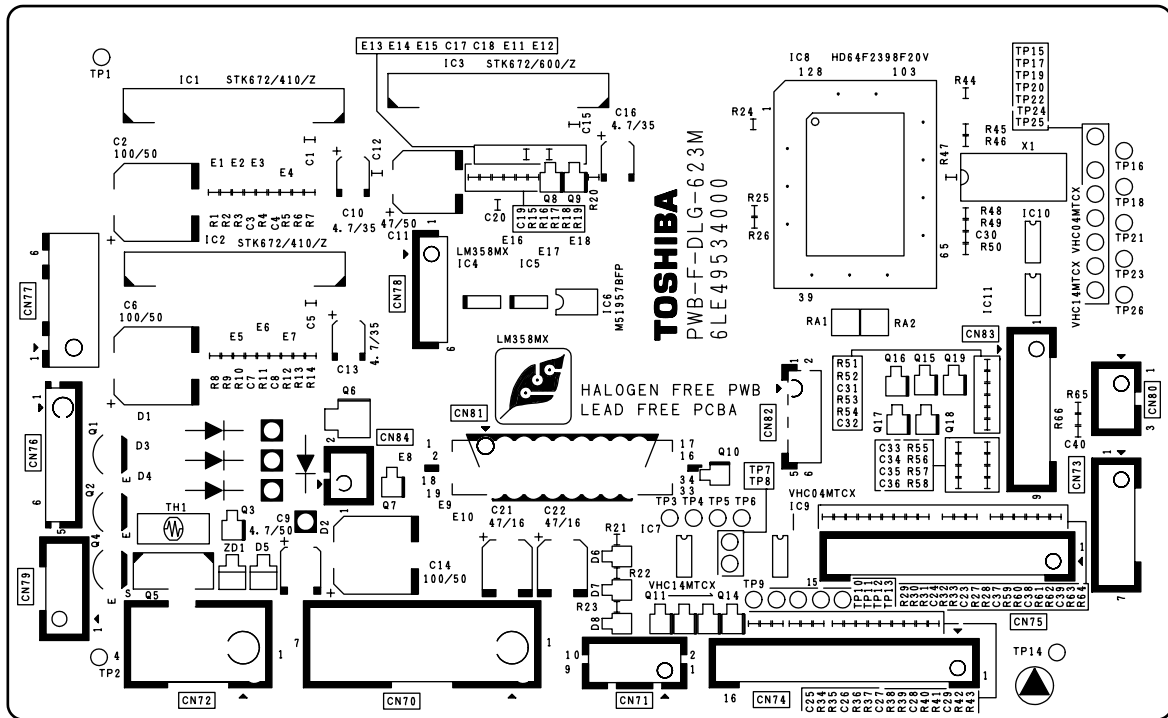


Fig. 8-1

- Soldered side

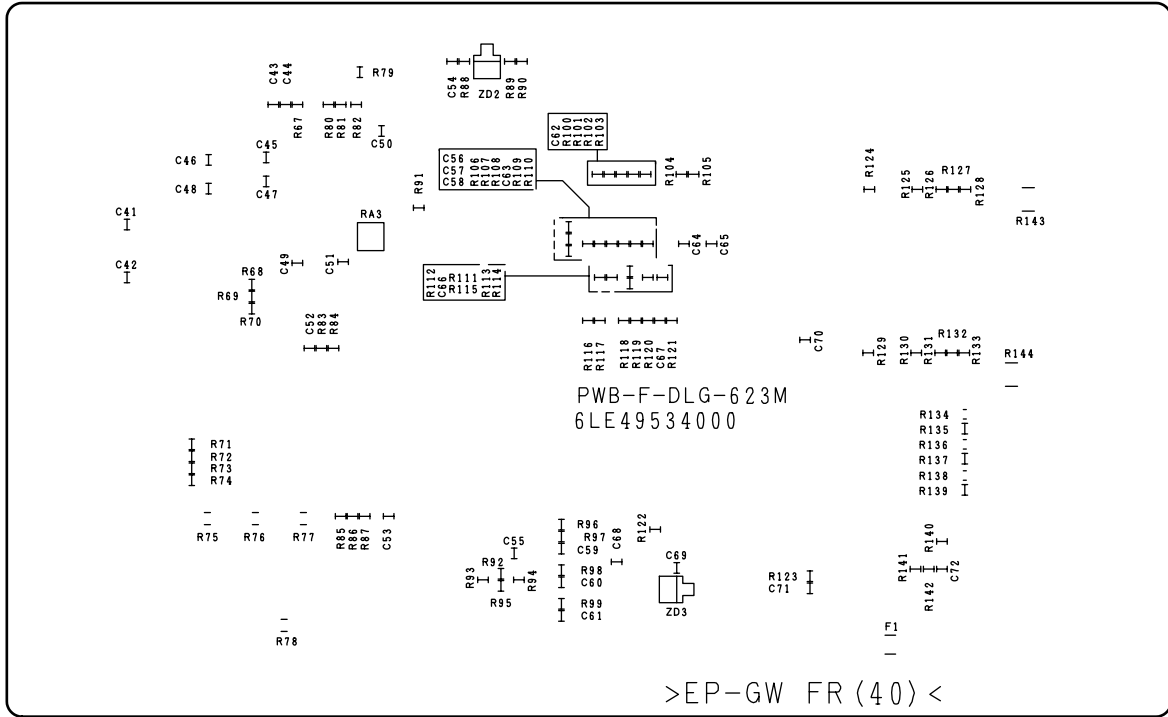
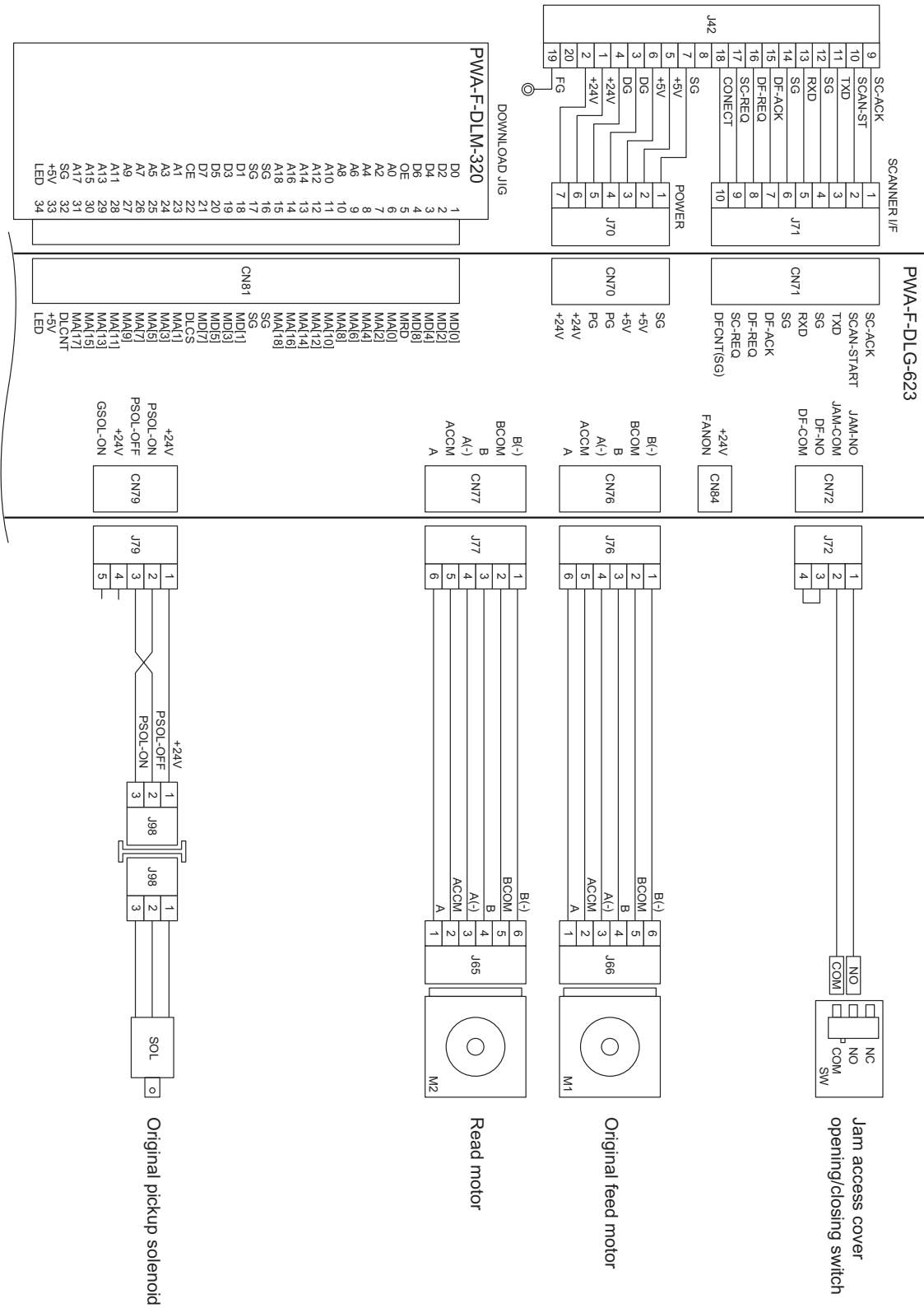
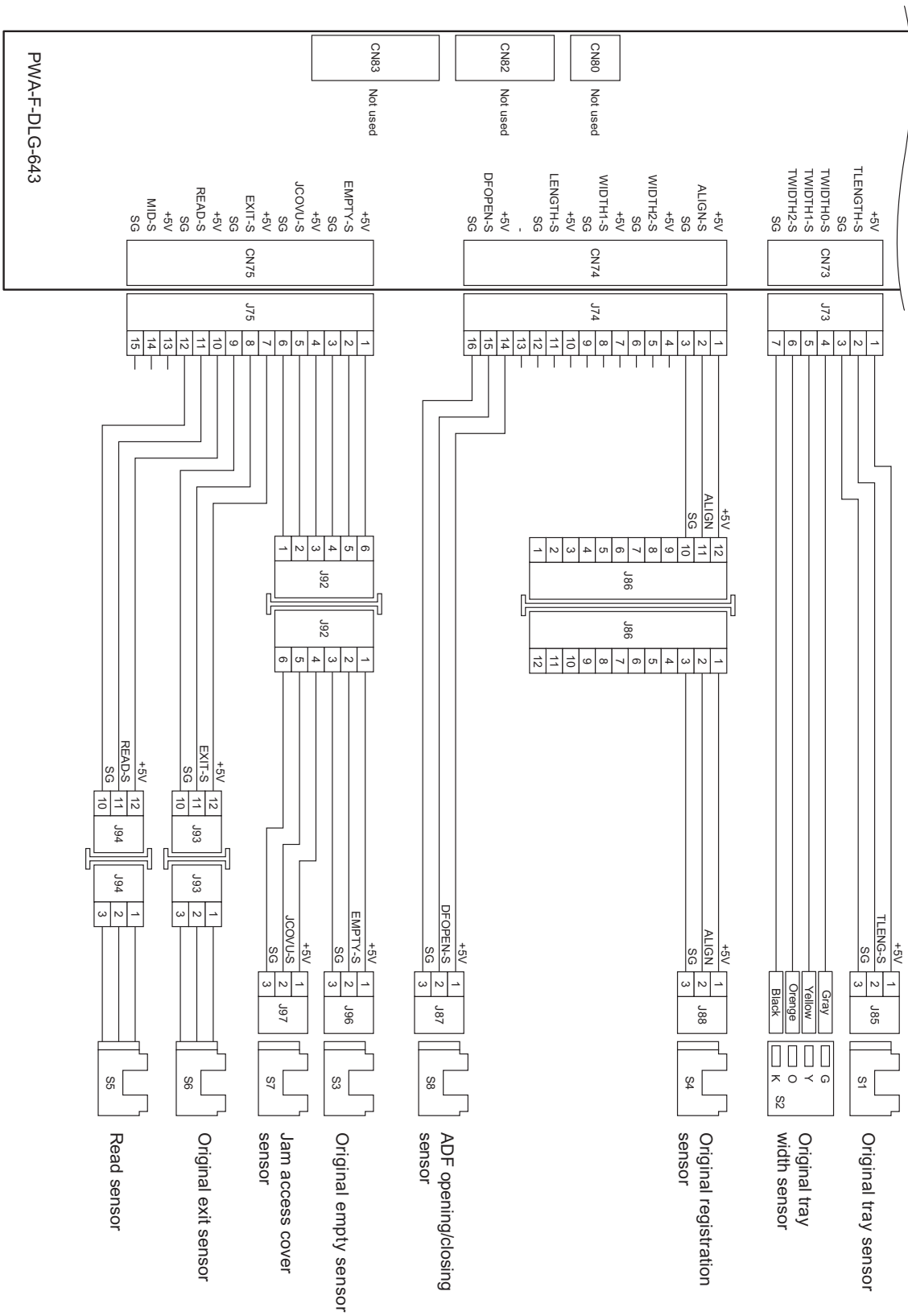


Fig. 8-2

# 8.2 Circuit Diagram





**Fig. 8-4**

# 8.3 Control PC Board Circuit

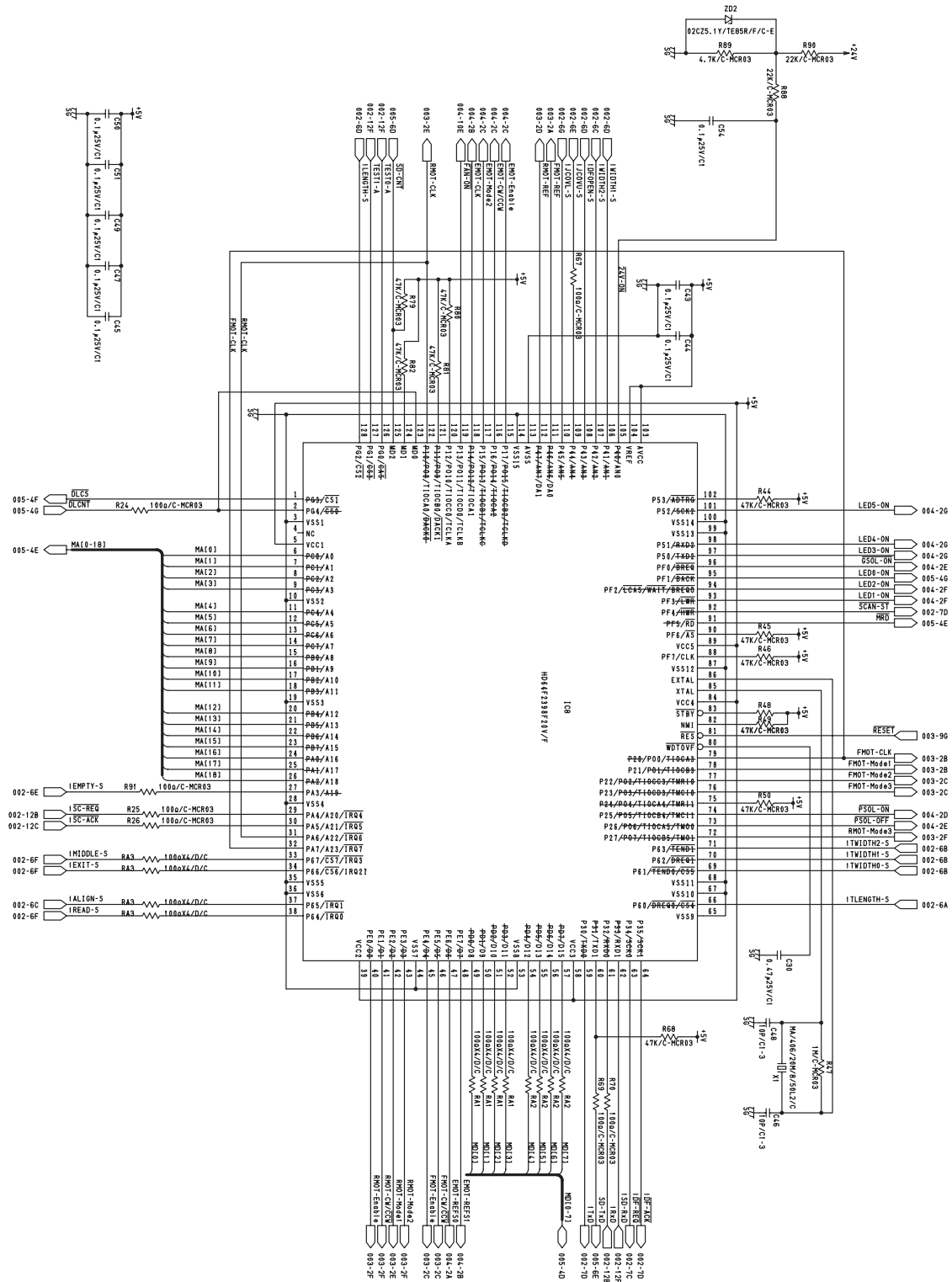


Fig. 8-5







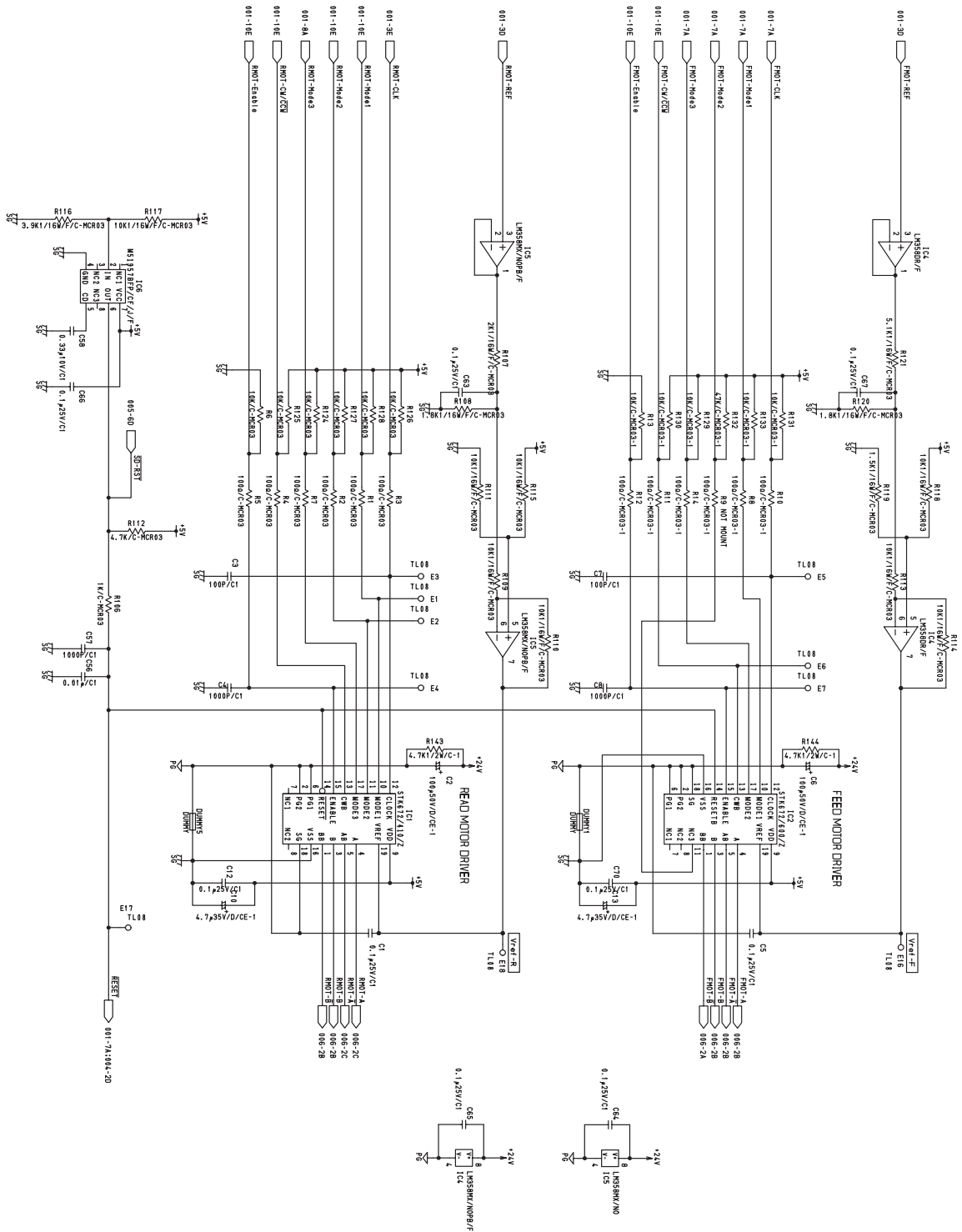


Fig. 8-7



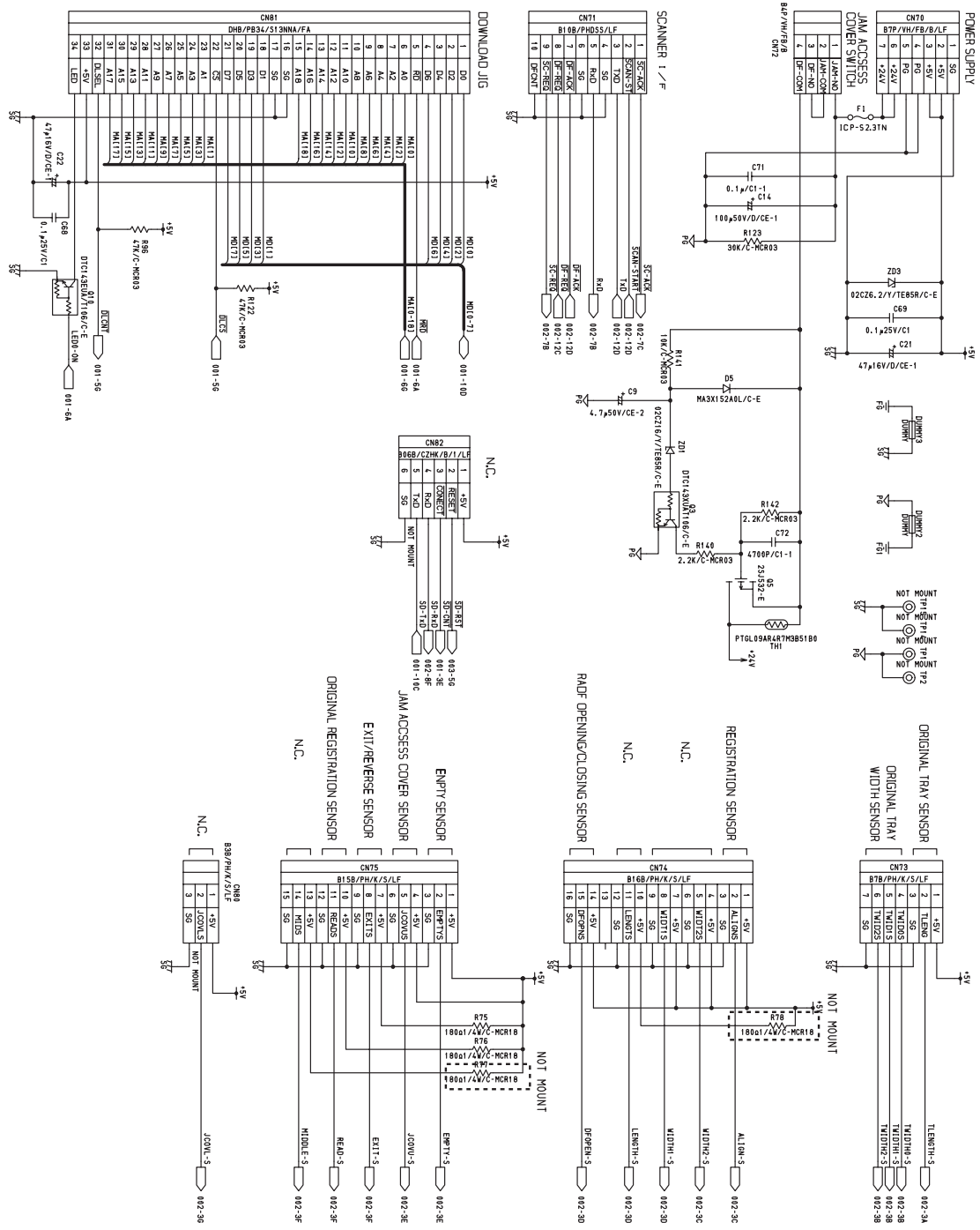


Fig. 8-9

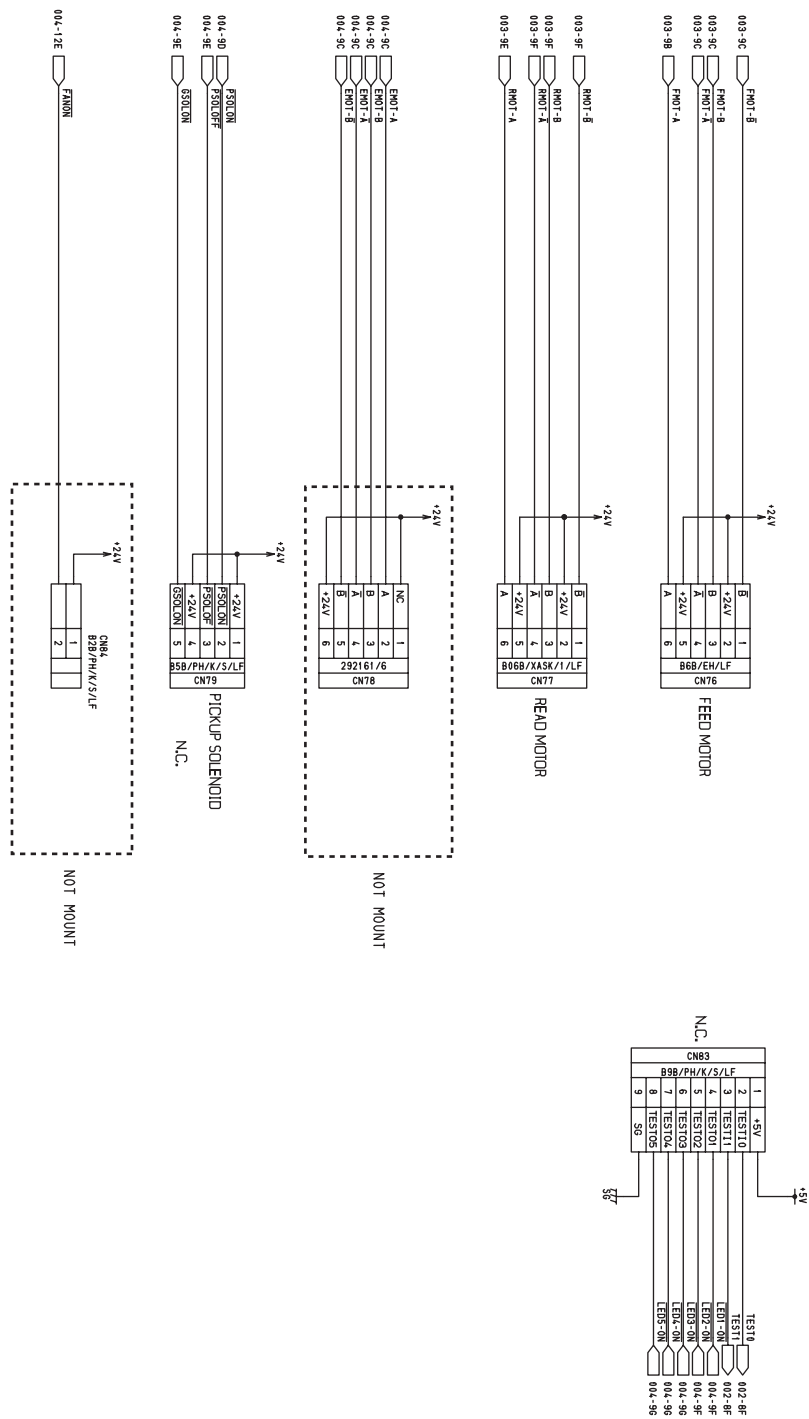


Fig. 8-10



**TOSHIBA**

**TOSHIBA TEC CORPORATION**

2-17-2, HIGASHIGOTANDA, SHINAGAWA-KU, TOKYO, 141-8664, JAPAN