

MODEL: iR2270/2870/3570/4570

No.: iR4570-013

Date: 25.02.05

SUBJECT: HOW TO PRINT LETTER HEAD PAPER (PRE PRINT PAPER)

REASON

iR2270/2870/3570/4570 support printing letter head paper (Pre print paper).

iR2200/2800/3300/2200i/3300i/2220i/3320i have the problem that the print side is different in simplex printing and duplex printing when letter head paper is copied/printed.

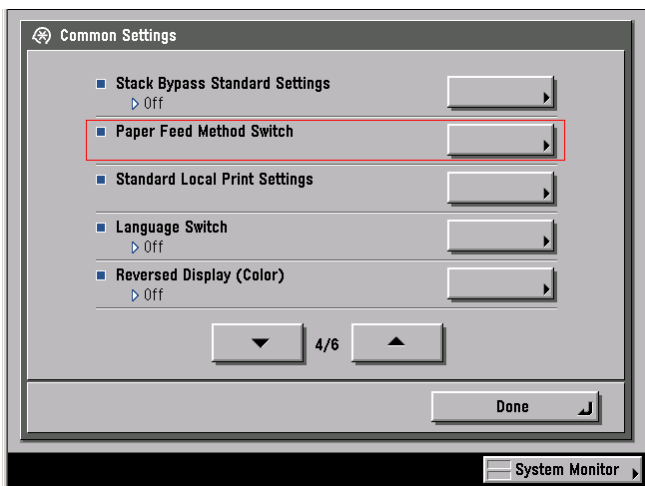
Letter head paper printing function has been requested from the field and is available for iR2270/2870/3570/4570. In order to print a job to letter head paper correctly, this service bulletin describes how to set up and print.

DETAIL

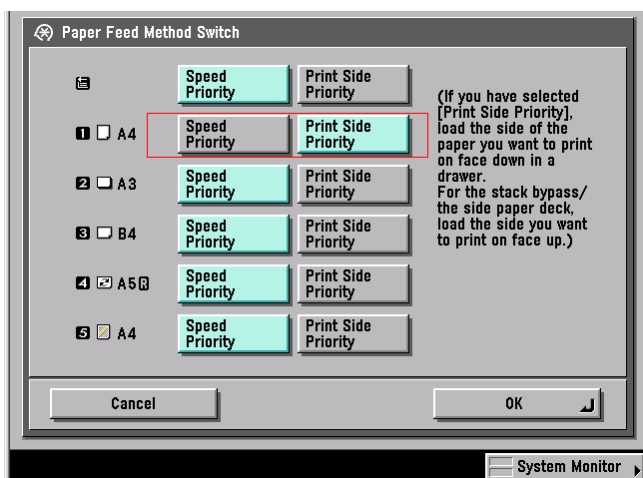
Setup the iR2270/2870/3570/4570

To print a job to letter head paper, you have to set iR2270/2870/3570/4570.

1. Select User mode button
2. Select 'Common Settings' and then select 'Paper Feed Method Switch'



3. Select 'Print Side Priority' of the drawer/stack bypass that sets letter head paper. Default setting is 'Speed Priority'



This setting is effective to the copy job and the print job.

Copy to letter head paper

1. When you copy a job, you have to select the drawer set as 'Print Side Priority' at iR's operation panel.

Print to letter head paper

1. When you print a job, you have to select the drawer set as 'Print Side Priority' at the driver.

Note: Print to letter head paper is available from system software v7.03 or later.

Feed letter head paper to drawer

Load the side of the paper you want to print on face down with letter head facing the rear of the machine in drawer.

For the stack bypass, load the side you want to print on face up with letter head facing the rear of the machine.

Ex. Printing 4 page job from Drawer 1.

		Page1	Page2	Page3	Page4
Speed Priority (Default)	Simplex	Upper	Upper	Upper	Upper
	Duplex	Lower	Upper	Lower	Upper
Print Side Priority	Simplex	Lower	Lower	Lower	Lower
	Duplex	Lower	Upper	Lower	Upper

Upper: The page is printed to the upper side of the paper.

Lower: The page is printed to the lower side of the paper.

Ex. Printing 4 page job from Stack Bypass.

		Page1	Page2	Page3	Page4
Speed Priority (Default)	Simplex	Lower	Lower	Lower	Lower
	Duplex	Upper	Lower	Upper	Lower
Print Side Priority	Simplex	Upper	Upper	Upper	Upper
	Duplex	Upper	Lower	Upper	Lower

Upper: The page is printed to the upper side of the paper.

Lower: The page is printed to the lower side of the paper.

And a job is printed as face down. It is not depending on 'Paper Feed Method Switch' setting.

Performance

If you change the setting from 'Speed Priority' to 'Print Side Priority', iR's productivity is reduced when you print simplex job. To achieve letter head printing, simplex job passes the duplex mechanism pass every time. As a result, simplex job performance becomes same as duplex job.

iR4570 performance (A4 paper)

	From Drawer		From Stack Bypass	
	Speed Priority (Default)	Print Side Priority	Speed Priority (Default)	Print Side Priority
Simplex	45cpm/ppm	22.5cpm/ppm	28cpm/ppm	13cpm/ppm
Duplex	22.5cpm/ppm	22.5cpm/ppm	13cpm/ppm	13cpm/ppm

Note:

About iR4600N/5000/6000/5000i/6000i/5020i/6020i/6800C/7200/8500/105, you can print both simplex and duplex job correctly to letter head paper without 'Paper Feed Method Switch' setting.

iRC3200/iR3100C have problem same as iR2200/2800/3300/2200i/3300i/2220i/3320i.

Print side is different in simplex printing and duplex printing when letter head paper is copied/printed.